

# Converting Colors

YUV(192.2020, 0.3934, 13.8548)

Have a look what the booklet for  
YUV(192.2020, 0.3934, 13.8548)  
contains.

<b>YUV(192.2020, 0.3934, 13.8548)</b> .....	3
<b><i>Conversions</i></b> .....	4
<b><i>Details</i></b> .....	6
<b><i>Harmonies</i></b> .....	12
<b><i>Previews</i></b> .....	24
<b><i>Color Blindness Simulation</i></b> .....	28
<b><i>CSS Examples</i></b> .....	31

# Color

**YUV(192.2020, 0.3934,  
13.8548)**

# Conversions

## Conversions Part 1

Format	Color
Hex	D0B8C1
RGB	208, 184, 193
RGB Percent	82%, 72%, 76%
CMY	0.1843, 0.2784, 0.2431
CMYK	0.00, 0.12, 0.07, 0.18
HSL	338°, 20%, 77%
HSV	338°, 12%, 82%
XYZ	52.7786, 51.5411, 57.6188
YIQ	192.2020, 11.4150, 7.8870

# Conversions

## Conversions Part 2

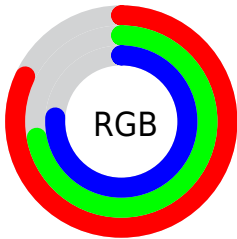
<b>Format</b>	<b>Color</b>
R <sub>Y</sub> B	208, 184, 193
Decimal	13678785
CIE Lab	77.01, 10.08, -1.42
CIE LCh	77, 10.182, 352.009
Yxy	51.5411, 0.3259, 0.3183
Android (android.graphics.Color)	4291868865 (0xFFD0B8C1)
YUV	192.2020, 0.3934, 13.8548
Hunter-Lab	71.7922, 5.5894, 2.6697

# Details

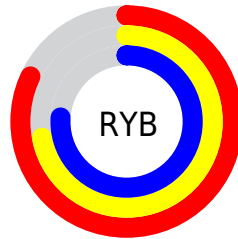
The YUV color  $192.2020, 0.3934, 13.8548$  is a light color, and the websafe version is hex `CCCCCC`. A complement of this color would be  $199.7980, -0.3934, -13.8548$ , and the grayscale version is  $192.0000, 0.0000, 0.0000$ .

A 20% lighter version of the original color is  $245.5110, 1.7201, 8.3219$ , and  $138.9030, 0.5408, 13.2401$  is the 20% darker color. If you saturate the color by 10%, you get  $178.3930, 0.7923, 25.9653$ , and if you desaturate by 10%, it is  $206.0110, -0.0054, 1.7444$ .

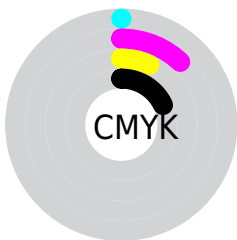
# Distribution



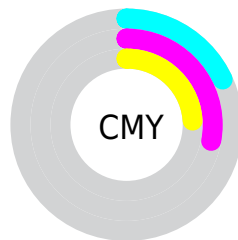
- Red (82%)
- Green (72%)
- Blue (76%)



- Red (82%)
- Yellow (72%)
- Blue (76%)



- Cyan (0%)
- Magenta (12%)
- Yellow (7%)
- Black (18%)



- Cyan (18%)
- Magenta (28%)
- Yellow (24%)

# Brightness & Saturation Gradients

These gradients show how the YUV color 192.2020, 0.3934, 13.8548 changes by changing the brightness by 10 percent. The first figure shows a shift by +10% for each color and the second figure -10%.

Similar to the brightness gradients but the following saturation gradients show a change of the YUV color 192.2020, 0.3934, 13.8548 by changing the saturation by 10% instead.



■ 192.2020, 0.3934,  
13.8548

■ 192.2020, 0.3934,  
13.8548

■ 255.0000, 0.0000,  
0.0000

■ 164.9030, 0.5408,  
13.2401

■ 245.5110, 1.7201,  
8.3219

■ 138.9030, 0.5408,  
13.2401

■ 113.1910, 0.3988,  
12.1105

■ 88.8920, 0.5462,  
11.4957

■ 64.8920, 0.5462,  
11.4957

■ 43.1800, 0.4043,  
10.3661

■ 21.9950, 0.9885,

9.6514

■ 0.0000, 0.0000,  
0.0000

■ 192.2020, 0.3934,  
13.8548

■ 192.2020, 0.3934,  
13.8548

■ 178.3930, 0.7923,  
25.9653

■ 206.0110, -0.0054,  
1.7444

■ 164.5840, 1.1911,  
38.0758

■ 219.8200, -0.4043,  
-10.3661

■ 151.3620, 1.3005,  
49.6715

■ 233.0420, -0.5137,  
-21.9618

■ 137.5530, 1.6994,  
61.7820

■ 239.8070, 2.5601,  
-27.8947

■ 123.7440, 2.0982,  
73.8925

■ 240.9470, 6.9281,  
-28.8945

■ 109.9350, 2.4970,  
86.0030

■ 96.1260, 2.8959,  
98.1135

■ 82.9040, 3.0053,  
109.7092

■ 71.0840, 3.4096,  
120.0753

# Harmonies

## Analogous

The Analogous color harmony consists of three colors that are next to each other on the color wheel.



192.0100, 4.9251, 7.0072



192.2020, 0.3934, 13.8548



191.9590, -4.4168, 16.6990

# Triad

The Triadic color harmony groups three colors that are evenly spaced from another and form a triangle on the color wheel.



192.2020, 0.3934, 13.8548



189.2360, -8.0043, 0.6700



187.7790, 8.4900, -16.4692

# Complementary

The Complementary color scheme is a pair of colors which are on the opposite of each other on the color wheel.



192.2020, 0.3934, 13.8548



199.7980, -0.3934, -13.8548

# Split Complementary

Split-complementary colors differ from the complementary color scheme. The scheme consists of three colors, the original color and two neighbors of the complement color.



187.4430, 4.7116, -17.9285



192.2020, 0.3934, 13.8548



187.6910, -4.7777, -7.6220

# Square

The Square scheme is like the rectangle color scheme, but the four colors are evenly spaced on the color wheel.



192.2020, 0.3934, 13.8548



190.6500, -9.1945, 9.0769



187.4990, -0.2460, -14.4696



189.6380, 9.0525, -10.2065



# Rectangle

The Rectangle color scheme consists of four colors that form a rectangle on the color wheel.



192.2020, 0.3934, 13.8548



191.6770, -6.7428, 16.0693



187.4990, -0.2460, -14.4696



187.7250, 7.0376, -17.2988

# Sweetspot

The Sweet Spot groups the original color and five complimentary colors.



192.2020, 0.3934, 13.8548



249.7340, 0.1311, 4.6183



191.2210, 8.2720, 6.8222



124.0220, -0.0108, 3.4887



0.0000, 0.0000, 0.0000



128.0000, 0.0000, 0.0000



# Same Dimension

The Same Dimension uses a secret algorithm to generate beautiful new colors.



192.2020, 0.3934, 13.8548



231.3600, 0.8085, 20.7323



192.9370, -4.4059, 13.2103



97.7450, 0.1257, 6.3626



57.4140, 2.7539, 96.9839



13.9690, 0.5083, 23.7062



# Inverse Universe

The Inverse Universe completely reimagines the original color for something new.



192.2020, 0.3934, 13.8548



231.3600, 0.8085, 20.7323



199.0630, 4.4059, -13.2103



97.7450, 0.1257, 6.3626



57.4140, 2.7539, 96.9839

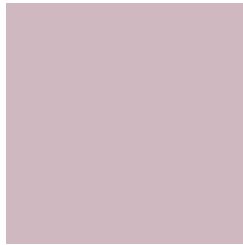


13.9690, 0.5083, 23.7062



# Previews

## White Background



This preview shows how the YUV color 192.2020, 0.3934, 13.8548 looks on a white background.

## Color Contrast Check

Large Text (above 18pt) WCAG AA × Fail

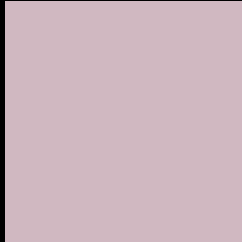
Any Text WCAG AA × Fail

Large Text (above 18pt) WCAG AAA × Fail

Any Text WCAG AAA × Fail



# Black Background



This preview shows how the YUV color 192.2020, 0.3934, 13.8548 looks on a black background.

## Color Contrast Check

Large Text (above 18pt) WCAG AA ✓ Pass

Any Text WCAG AA ✓ Pass

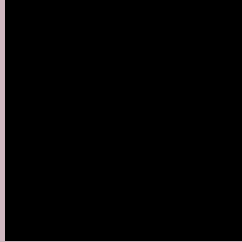
Large Text (above 18pt) WCAG AAA ✓ Pass

Any Text WCAG AAA ✓ Pass

If you want to check with other color combinations, try the [Color Contrast Checker](#).

# YUV 192.2020, 0.3934, 13.8548

## Background



This preview shows how black text looks on a background with the YUV color 192.2020, 0.3934, 13.8548.



This preview shows how white text looks on a background with the YUV color 192.2020, 0.3934,



# Color Blindness Simulation

Color vision deficiency is a very complex topic, and I could not describe the different causes any better than Wikipedia does, so if you want to learn more, you should check out their [article about color blindness](#).

## Dichromacy



### Original Color

192.2020, 0.3934, 13.8548

### Protanopia

190.6950, 2.6154, 1.1445

### Deuteranopia

191.9030, 0.5408, 13.2401



## Tritanopia

192.4840, 2.7194, 14.4845

# Trichromacy



## Original Color

192.2020, 0.3934, 13.8548

## Protanomaly

191.2010, 1.8729, 5.9627

## Deuteranomaly

191.9030, 0.5408, 13.2401

## Tritanomaly

192.2560, 1.8458, 14.6845

# Monochromacy



## Original Color

192.2020, 0.3934, 13.8548

## Achromatopsia

192.0000, 0.0000, 0.0000

## Achromatomaly

192.0330, -0.0163, 5.2331

# CSS Examples

## Text

The CSS property to change the color of the text to YUV 192.2020, 0.3934, 13.8548 is called "color". The color property can be set on classes, ids or directly on the HTML element.

This example shows how text in the color `rgb(208, 184, 193)` looks like.

```
.text, #text, p{  
    color:rgb(208, 184, 193)  
}
```

If you want to add a text shadow in that color use the text-shadow property, you can generate a text shadow directly with our [CSS Text Shadow Generator](#).

Here you see how black text with a 4 pixel rgb(208, 184, 193) colored shadow looks like.

```
.shadow{ text-shadow: 4px 4px 2px rgb(208, 184, 193) }
```

## Border

The CSS property to change the border of an element to YUV 192.2020, 0.3934, 13.8548 is called "border". The border property can be set on classes, ids or directly on the HTML element.

This example shows the color as border, it can be applied via the CSS property "border" or "border-color".

```
.border, #border, table{ border:4px solid rgb(208, 184, 193) }
```



If only the border color should be changed use the property `border-color`.

```
.border{ border-color:rgb(208, 184, 193) }
```

If you want to add a box shadow in that color use:

Here you see how a box with a 4 pixel `rgb(208, 184, 193)` colored shadow looks like.

```
.boxshadow{ -moz-box-shadow:4px 4px 4px  
4px rgb(208, 184, 193); -webkit-box-  
shadow:4px 4px 4px 4px rgb(208, 184, 193);  
box-shadow:4px 4px 4px 4px rgb(208, 184,  
193) }
```

# Background

The CSS property to change the background color of an element to YUV 192.2020, 0.3934, 13.8548 is called "background". The background property can be set on classes, ids or directly on the HTML element.

```
.background, #background, body{  
background: rgb(208, 184, 193) }
```

If only the background color should be changed can be used:

```
.background{ background-color: rgb(208,  
184, 193) }
```

This example shows the color as background, it is applied via the CSS property "background".

To optimize and compress your CSS code, you can use our [online CSS compressor and optimizer](#) based on csstidy. If you want to create a linear or radial gradient as background or border, check our [CSS Gradient Generator](#).

Hey! You found this booklet interesting? Support Converting Colors with the new Membership Option!

The pro membership hides all ads, plus gives you double the colors in the color bucket, and more awesome pro features!

**[Learn more, Memberships starting at \\$2.50/m!](#)**

**Follow me  
on Twitter!**

@ConvertingColor