

Converting Colors

YUV(192.3060, -17.4059,
29.5496)

Have a look what the booklet for
YUV(192.3060, -17.4059, 29.5496)
contains.

YUV(192.3060, -17.4059, 29.5496)	3
<i>Conversions</i>	4
<i>Details</i>	6
<i>Harmonies</i>	12
<i>Previews</i>	24
<i>Color Blindness Simulation</i>	28
<i>CSS Examples</i>	31

Color

**YUV(192.3060, -17.4059,
29.5496)**

Conversions

Conversions Part 1

Format	Color
Hex	E2B69D
RGB	226, 182, 157
RGB Percent	89%, 71%, 62%
CMY	0.1137, 0.2863, 0.3843
CMYK	0.00, 0.19, 0.31, 0.11
HSL	22°, 54%, 75%
HSV	22°, 31%, 89%
XYZ	54.1778, 52.0590, 39.0912
YIQ	192.3060, 34.2490, 1.5530

Conversions

Conversions Part 2

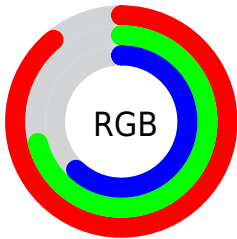
Format	Color
R _Y B	226, 196, 157
Decimal	14857885
CIE Lab	77.32, 12.35, 18.74
CIE LCh	77, 22.444, 56.629
Yxy	52.0590, 0.3728, 0.3582
Android (android.graphics.Color)	4293047965 (0xFFE2B69D)
YUV	192.3060, -17.4059, 29.5496
Hunter-Lab	72.1519, 7.7671, 18.3836

Details

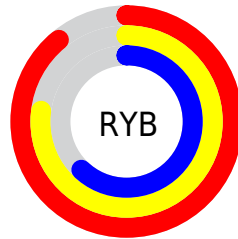
The YUV color $192.3060, -17.4059, 29.5496$ is a light color, and the websafe version is hex FFCC99 . A complement of this color would be $190.6940, 17.4059, -29.5496$, and the grayscale version is $192.0000, 0.0000, 0.0000$.

A 20% lighter version of the original color is $240.1190, -13.8627, 13.0506$, and $138.6370, -16.0900, 27.5054$ is the 20% darker color. If you saturate the color by 10%, you get $181.4660, -23.4007, 39.0563$, and if you desaturate by 10%, it is $203.1460, -11.4110, 20.0430$.

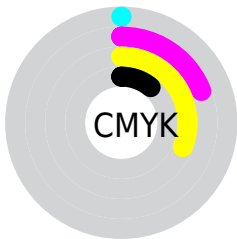
Distribution



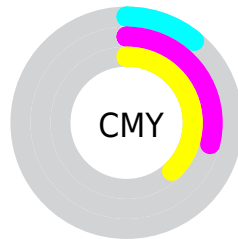
- Red (89%)
- Green (71%)
- Blue (62%)



- Red (89%)
- Yellow (77%)
- Blue (62%)



- Cyan (0%)
- Magenta (19%)
- Yellow (31%)
- Black (11%)



- Cyan (11%)
- Magenta (29%)
- Yellow (38%)

Brightness & Saturation Gradients

These gradients show how the YUV color 192.3060, -17.4059, 29.5496 changes by changing the brightness by 10 percent. The first figure shows a shift by +10% for each color and the second figure -10%.

Similar to the brightness gradients but the following saturation gradients show a change of the YUV color 192.3060, -17.4059, 29.5496 by changing the saturation by 10% instead.

192.3060,
-17.4059, 29.5496

192.3060,
-17.4059, 29.5496

255.0000, 0.0000,
0.0000

164.8220,
-16.6742, 28.2201

240.1190,
-13.8627, 13.0506

138.6370,
-16.0900, 27.5054

253.2900, -6.5520,
1.4997

112.7400,
-15.6478, 25.6610

88.2560, -14.9162,
24.3315

64.4730, -14.0372,
22.3872

41.8040, -12.7214,
20.3429

21.3630, -10.5320,

18.0986

■ 0.5980, -0.2948,
1.2296

■ 0.0000, 0.0000,
0.0000

■ 192.3060,
-17.4059, 29.5496

■ 192.3060,
-17.4059, 29.5496

■ 181.4660,
-23.4007, 39.0563

■ 203.1460,
-11.4110, 20.0430

■ 170.1530,
-28.6694, 48.9778

■ 214.4590, -6.1423,
10.1215

■ 159.3130,
-34.6643, 58.4845

■ 225.2990, -0.1474,
0.6148

■ 148.0000,
-39.9330, 68.4060

■ 236.6120, 5.1213,
-9.3067

■ 137.1600,
-45.9279, 77.9127

■ 245.7420, 4.5642,
-17.3137

■ 126.3200,
-51.9228, 87.4194

■ 246.3290, 4.2748,
-17.8285

■ 115.7080,
-57.0440, 96.7261

Harmonies

Analogous

The Analogous color harmony consists of three colors that are next to each other on the color wheel.



193.5870, -10.1494, 35.4422



192.3060, -17.4059, 29.5496



190.5340, -19.9833, 16.1947

Triad

The Triadic color harmony groups three colors that are evenly spaced from another and form a triangle on the color wheel.



192.3060, -17.4059, 29.5496



183.3500, 2.2925, -35.3869



192.5820, 17.4611, -0.5104

Complementary

The Complementary color scheme is a pair of colors which are on the opposite of each other on the color wheel.



192.3060, -17.4059, 29.5496



190.6940, 17.4059, -29.5496

Split Complementary

Split-complementary colors differ from the complementary color scheme. The scheme consists of three colors, the original color and two neighbors of the complement color.



189.3620, 21.0205, -22.2425



192.3060, -17.4059, 29.5496



182.1670, 13.2287, -43.1195

Square

The Square scheme is like the rectangle color scheme, but the four colors are evenly spaced on the color wheel.



192.3060, -17.4059, 29.5496



185.2890, -8.5235, -19.5475



184.6220, 19.9064, -38.2565



194.6400, 9.5445, 18.7327

Rectangle

The Rectangle color scheme consists of four colors that form a rectangle on the color wheel.



192.3060, -17.4059, 29.5496



188.8100, -18.6403, 5.4286



184.6220, 19.9064, -38.2565



191.6950, 19.3774, -8.5025

Sweetspot

The Sweet Spot groups the original color and five complimentary colors.



192.3060, -17.4059, 29.5496



243.5730, -5.7055, 10.0215



182.7610, 9.4848, 37.9206



121.0070, -3.9475, 6.1329



0.0000, 0.0000, 0.0000



128.0000, 0.0000, 0.0000

Same Dimension

The Same Dimension uses a secret algorithm to generate beautiful new colors.



192.3060, -17.4059, 29.5496



209.0640, -23.6956, 40.2859



212.2640, -27.2452, 12.0465



106.6370, -2.7790, 4.7034



90.1920, -44.4647, 75.2536



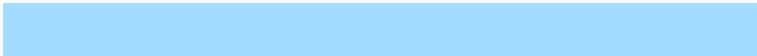
24.9180, -12.2846, 20.2429

Inverse Universe

The Inverse Universe completely reimagines the original color for something new.



190.6940, 17.4059, -29.5496



206.9360, 23.6956, -40.2859



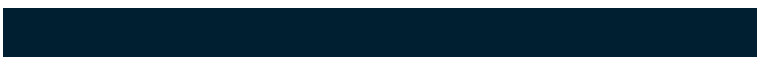
170.7360, 27.2452, -12.0465



106.3630, 2.7790, -4.7034



85.8080, 44.4647, -75.2536



23.6690, 11.9952, -20.7577

Previews

White Background



This preview shows how the YUV color 192.3060, -17.4059, 29.5496 looks on a white background.

Color Contrast Check

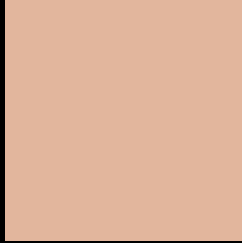
Large Text (above 18pt) WCAG AA × Fail

Any Text WCAG AA × Fail

Large Text (above 18pt) WCAG AAA × Fail

Any Text WCAG AAA × Fail

Black Background



This preview shows how the YUV color 192.3060, -17.4059, 29.5496 looks on a black background.

Color Contrast Check

Large Text (above 18pt) WCAG AA ✓ Pass

Any Text WCAG AA ✓ Pass

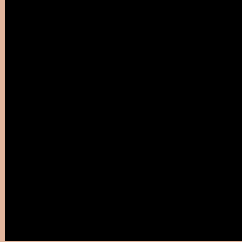
Large Text (above 18pt) WCAG AAA ✓ Pass

Any Text WCAG AAA ✓ Pass

If you want to check with other color combinations, try the [Color Contrast Checker](#).

YUV 192.3060, -17.4059, 29.5496

Background



This preview shows how black text looks on a background with the YUV color 192.3060, -17.4059, 29.5496.



This preview shows how white text looks on a background with the YUV color 192.3060, -17.4059, 29.5496.

Color Blindness Simulation

Color vision deficiency is a very complex topic, and I could not describe the different causes any better than Wikipedia does, so if you want to learn more, you should check out their [article about color blindness](#).

Dichromacy



Original Color

192.3060, -17.4059, 29.5496

Protanopia

190.5700, -14.5780, 9.1471

Deuteranopia

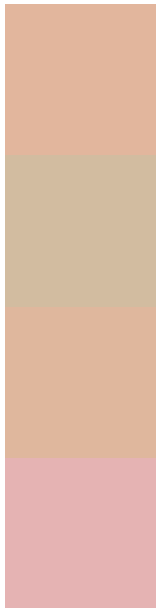
192.2840, -17.3950, 26.0609



Tritanopia

194.4430, -1.6974, 31.1835

Trichromacy



Original Color

192.3060, -17.4059, 29.5496

Protanomaly

191.3860, -15.4733, 16.3245

Deuteranomaly

191.9960, -17.2530, 27.1905

Tritanomaly

193.9500, -7.3703, 30.7389

Monochromacy



Original Color

192.3060, -17.4059, 29.5496

Achromatopsia

192.0000, 0.0000, 0.0000

Achromatomaly

191.7580, -6.2897, 10.7362

CSS Examples

Text

The CSS property to change the color of the text to YUV 192.3060, -17.4059, 29.5496 is called "color". The color property can be set on classes, ids or directly on the HTML element.

This example shows how text in the color `rgb(226, 182, 157)` looks like.

```
.text, #text, p{  
    color:rgb(226, 182, 157)  
}
```

If you want to add a text shadow in that color use the text-shadow property, you can generate a text shadow directly with our [CSS Text Shadow Generator](#).

Here you see how black text with a 4 pixel rgb(226, 182, 157) colored shadow looks like.

```
.shadow{ text-shadow: 4px 4px 2px rgb(226, 182, 157) }
```

Border

The CSS property to change the border of an element to YUV 192.3060, -17.4059, 29.5496 is called "border".

The border property can be set on classes, ids or directly on the HTML element.

This example shows the color as border, it can be applied via the CSS property "border" or "border-color".

```
.border, #border, table{ border:4px solid rgb(226, 182, 157) }
```


If only the border color should be changed use the property border-color.

```
.border{ border-color:rgb(226, 182, 157) }
```

If you want to add a box shadow in that color use:

Here you see how a box with a 4 pixel rgb(226, 182, 157) colored shadow looks like.

```
.boxshadow{ -moz-box-shadow:4px 4px 4px  
4px rgb(226, 182, 157); -webkit-box-  
shadow:4px 4px 4px 4px rgb(226, 182, 157);  
box-shadow:4px 4px 4px 4px rgb(226, 182,  
157) }
```

Background

The CSS property to change the background color of an element to YUV 192.3060, -17.4059, 29.5496 is called "background". The background property can be set on classes, ids or directly on the HTML element.

```
.background, #background, body{  
background: rgb(226, 182, 157) }
```

If only the background color should be changed can be used:

```
.background{ background-color: rgb(226,  
182, 157) }
```

This example shows the color as background, it is applied via the CSS property "background".

To optimize and compress your CSS code, you can use our [online CSS compressor and optimizer](#) based on csstidy. If you want to create a linear or radial gradient as background or border, check our [CSS Gradient Generator](#).

Hey! You found this booklet interesting? Support Converting Colors with the new Membership Option!

The pro membership hides all ads, plus gives you double the colors in the color bucket, and more awesome pro features!

[Learn more, Memberships starting at \\$2.50/m!](#)

**Follow me
on Twitter!**

@ConvertingColor