

Converting Colors

YUV(192.3530, -12.0060,
24.2464)

Have a look what the booklet for
YUV(192.3530, -12.0060, 24.2464)
contains.

YUV(192.3530, -12.0060, 24.2464)	3
<i>Conversions</i>	4
<i>Details</i>	6
<i>Harmonies</i>	12
<i>Previews</i>	24
<i>Color Blindness Simulation</i>	28
<i>CSS Examples</i>	31

Color

**YUV(192.3530, -12.0060,
24.2464)**

Conversions

Conversions Part 1

Format	Color
Hex	DCB7A8
RGB	220, 183, 168
RGB Percent	86%, 72%, 66%
CMY	0.1373, 0.2824, 0.3412
CMYK	0.00, 0.17, 0.24, 0.14
HSL	17°, 43%, 76%
HSV	17°, 24%, 86%
XYZ	53.5166, 51.9098, 44.2447
YIQ	192.3530, 26.8670, 3.1790

Conversions

Conversions Part 2

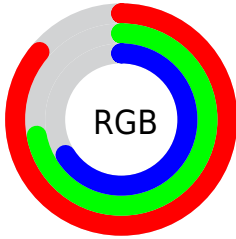
Format	Color
RYB	220, 189, 168
Decimal	14464936
CIELab	77.23, 11.04, 12.60
CIELCh	77, 16.749, 48.782
Yxy	51.9098, 0.3576, 0.3468
Android (android.graphics.Color)	4292655016 (0xFFDCB7A8)
YUV	192.3530, -12.0060, 24.2464
Hunter-Lab	72.0484, 6.5025, 14.0241

Details

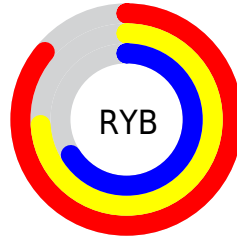
The YUV color $192.3530, -12.0060, 24.2464$ is a light color, and the websafe version is hex FFCCCC . A complement of this color would be $195.6470, 12.0060, -24.2464$, and the grayscale version is $192.0000, 0.0000, 0.0000$.

A 20% lighter version of the original color is $241.9600, -9.3473, 11.4361$, and $138.5700, -11.1270, 22.3021$ is the 20% darker color. If you saturate the color by 10%, you get $180.4530, -16.9853, 34.6827$, and if you desaturate by 10%, it is $204.2530, -7.0267, 13.8101$.

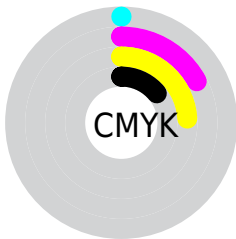
Distribution



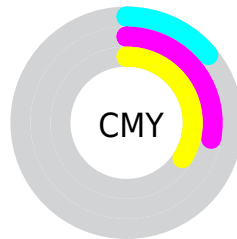
- Red (86%)
- Green (72%)
- Blue (66%)



- Red (86%)
- Yellow (74%)
- Blue (66%)



- Cyan (0%)
- Magenta (17%)
- Yellow (24%)
- Black (14%)



- Cyan (14%)
- Magenta (28%)
- Yellow (34%)

Brightness & Saturation Gradients

These gradients show how the YUV color 192.3530, -12.0060, 24.2464 changes by changing the brightness by 10 percent. The first figure shows a shift by +10% for each color and the second figure -10%.

Similar to the brightness gradients but the following saturation gradients show a change of the YUV color 192.3530, -12.0060, 24.2464 by changing the saturation by 10% instead.

■ 192.3530,
-12.0060, 24.2464

■ 192.3530,
-12.0060, 24.2464

■ 255.0000, 0.0000,
0.0000

■ 165.1680,
-11.4218, 23.5317

■ 241.9600, -9.3473,
11.4361

■ 138.5700,
-11.1270, 22.3021

■ 254.6580, -1.3104,
0.2999

■ 112.9720,
-10.8322, 21.0726

■ 88.4880, -10.1006,
19.7430

■ 65.0040, -9.3690,
18.4135

■ 42.5200, -8.6374,
17.0840

■ 20.7650, -10.2371,

16.8691

■ 0.0000, 0.0000,
0.0000

■ 192.3530,
-12.0060, 24.2464

■ 192.3530,
-12.0060, 24.2464

■ 180.4530,
-16.9853, 34.6827

■ 204.2530, -7.0267,
13.8101

■ 169.1400,
-22.2540, 44.6042

■ 215.5660, -1.7580,
3.8886

■ 157.2400,
-27.2333, 55.0405

■ 227.4660, 3.2213,
-6.5477

■ 145.3400,
-32.2126, 65.4768

■ 239.2520, 7.7638,
-16.8840

■ 134.0270,
-37.4813, 75.3983

■ 244.5350, 5.1592,
-21.5172

■ 122.1270,
-42.4606, 85.8346

■ 110.2270,
-47.4399, 96.2709

■ 102.7610,
-50.6612, 102.8186

Harmonies

Analogous

The Analogous color harmony consists of three colors that are next to each other on the color wheel.



193.2700, -6.0491, 26.9502



192.3530, -12.0060, 24.2464



191.2010, -14.8891, 15.6097

Triad

The Triadic color harmony groups three colors that are evenly spaced from another and form a triangle on the color wheel.



192.3530, -12.0060, 24.2464



185.3300, -0.6557, -23.0914



191.6370, 13.9830, -4.9436

Complementary

The Complementary color scheme is a pair of colors which are on the opposite of each other on the color wheel.



192.3530, -12.0060, 24.2464



195.6470, 12.0060, -24.2464

Split Complementary

Split-complementary colors differ from the complementary color scheme. The scheme consists of three colors, the original color and two neighbors of the complement color.



189.0050, 15.7735, -19.2984



192.3530, -12.0060, 24.2464



185.3490, 7.2229, -30.1241

Square

The Square scheme is like the rectangle color scheme, but the four colors are evenly spaced on the color wheel.



192.3530, -12.0060, 24.2464



187.3440, -8.5506, -10.8257



186.2550, 13.1853, -29.1646



193.3570, 8.6980, 10.2109

Rectangle

The Rectangle color scheme consists of four colors that form a rectangle on the color wheel.



192.3530, -12.0060, 24.2464



189.5590, -14.5726, 7.4028



186.2550, 13.1853, -29.1646



190.8320, 14.8728, -10.3767

Sweetspot

The Sweet Spot groups the original color and five complimentary colors.



192.3530, -12.0060, 24.2464



245.3170, -4.1003, 8.4920



187.7660, 8.4964, 28.2692



122.0500, -2.4896, 5.2182



0.0000, 0.0000, 0.0000



128.0000, 0.0000, 0.0000

Same Dimension

The Same Dimension uses a secret algorithm to generate beautiful new colors.



192.3530, -12.0060, 24.2464



216.9690, -16.2537, 33.3532



207.6150, -19.5302, 10.8616



104.0500, -2.4896, 5.2182



81.0770, -39.9710, 80.6165



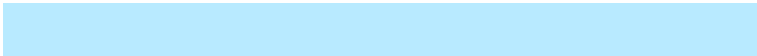
21.3850, -10.5428, 21.5874

Inverse Universe

The Inverse Universe completely reimagines the original color for something new.



195.6470, 12.0060, -24.2464



221.4440, 16.5431, -32.8384



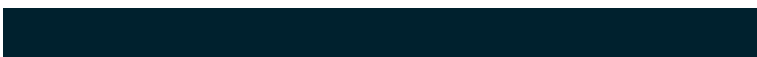
180.3850, 19.5302, -10.8616



104.3630, 2.7790, -4.7034



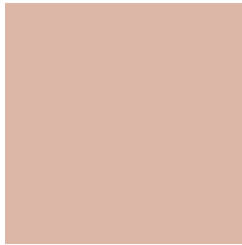
91.9230, 39.9710, -80.6165



24.6150, 10.5428, -21.5874

Previews

White Background



This preview shows how the YUV color 192.3530, -12.0060, 24.2464 looks on a white background.

Color Contrast Check

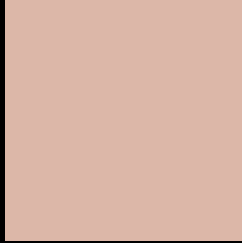
Large Text (above 18pt) WCAG AA × Fail

Any Text WCAG AA × Fail

Large Text (above 18pt) WCAG AAA × Fail

Any Text WCAG AAA × Fail

Black Background



This preview shows how the YUV color 192.3530, -12.0060, 24.2464 looks on a black background.

Color Contrast Check

Large Text (above 18pt) WCAG AA ✓ Pass

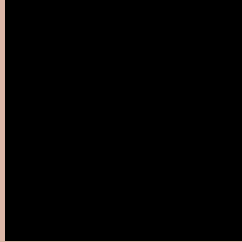
Any Text WCAG AA ✓ Pass

Large Text (above 18pt) WCAG AAA ✓ Pass

Any Text WCAG AAA ✓ Pass

If you want to check with other color combinations, try the [Color Contrast Checker](#).

YUV 192.3530, -12.0060, 24.2464 Background



This preview shows how black text looks on a background with the YUV color 192.3530, -12.0060, 24.2464.



This preview shows how white text looks on a background with the YUV color 192.3530, -12.0060,

Color Blindness Simulation

Color vision deficiency is a very complex topic, and I could not describe the different causes any better than Wikipedia does, so if you want to learn more, you should check out their [article about color blindness](#).

Dichromacy



Original Color

192.3530, -12.0060, 24.2464

Protanopia

190.6390, -9.1890, 7.3326

Deuteranopia

192.3420, -12.0006, 22.5021



Tritanopia

193.7520, -0.3707, 25.6505

Trichromacy



Original Color

192.3530, -12.0060, 24.2464

Protanomaly

191.1560, -9.9369, 13.8952

Deuteranomaly

192.6410, -12.1480, 23.1168

Tritanomaly

193.0140, -4.4439, 25.4207

Monochromacy



Original Color

192.3530, -12.0060, 24.2464

Achromatopsia

192.0000, 0.0000, 0.0000

Achromatomaly

192.2030, -4.5371, 8.5920

CSS Examples

Text

The CSS property to change the color of the text to YUV 192.3530, -12.0060, 24.2464 is called "color". The color property can be set on classes, ids or directly on the HTML element.

This example shows how text in the color `rgb(220, 183, 168)` looks like.

```
.text, #text, p{  
    color:rgb(220, 183, 168)  
}
```

If you want to add a text shadow in that color use the text-shadow property, you can generate a text shadow directly with our [CSS Text Shadow Generator](#).

Here you see how black text with a 4 pixel rgb(220, 183, 168) colored shadow looks like.

```
.shadow{ text-shadow: 4px 4px 2px rgb(220, 183, 168) }
```

Border

The CSS property to change the border of an element to YUV 192.3530, -12.0060, 24.2464 is called "border".

The border property can be set on classes, ids or directly on the HTML element.

This example shows the color as border, it can be applied via the CSS property "border" or "border-color".

```
.border, #border, table{ border:4px solid rgb(220, 183, 168) }
```


If only the border color should be changed use the property `border-color`.

```
.border{ border-color:rgb(220, 183, 168) }
```

If you want to add a box shadow in that color use:

Here you see how a box with a 4 pixel `rgb(220, 183, 168)` colored shadow looks like.

```
.boxshadow{ -moz-box-shadow:4px 4px 4px  
4px rgb(220, 183, 168); -webkit-box-  
shadow:4px 4px 4px 4px rgb(220, 183, 168);  
box-shadow:4px 4px 4px 4px rgb(220, 183,  
168) }
```

Background

The CSS property to change the background color of an element to YUV 192.3530, -12.0060, 24.2464 is called "background". The background property can be set on classes, ids or directly on the HTML element.

```
.background, #background, body{  
background: rgb(220, 183, 168) }
```

If only the background color should be changed can be used:

```
.background{ background-color: rgb(220,  
183, 168) }
```

This example shows the color as background, it is applied via the CSS property "background".

To optimize and compress your CSS code, you can use our [online CSS compressor and optimizer](#) based on csstidy. If you want to create a linear or radial gradient as background or border, check our [CSS Gradient Generator](#).

Hey! You found this booklet interesting? Support Converting Colors with the new Membership Option!

The pro membership hides all ads, plus gives you double the colors in the color bucket, and more awesome pro features!

[Learn more, Memberships starting at \\$2.50/m!](#)

**Follow me
on Twitter!**

@ConvertingColor