

Converting Colors

YUV(192.5130, -4.6899,
10.9511)

Have a look what the booklet for
YUV(192.5130, -4.6899, 10.9511)
contains.

YUV(192.5130, -4.6899, 10.9511)	3
<i>Conversions</i>	4
<i>Details</i>	6
<i>Harmonies</i>	12
<i>Previews</i>	24
<i>Color Blindness Simulation</i>	28
<i>CSS Examples</i>	31

Color

**YUV(192.5130, -4.6899,
10.9511)**

Conversions

Conversions Part 1

Format	Color
Hex	CDBCB7
RGB	205, 188, 183
RGB Percent	80%, 74%, 72%
CMY	0.1961, 0.2627, 0.2824
CMYK	0.00, 0.08, 0.11, 0.20
HSL	14°, 18%, 76%
HSV	14°, 11%, 80%
XYZ	51.7073, 52.3645, 52.1818
YIQ	192.5130, 11.7370, 2.0490

Conversions

Conversions Part 2

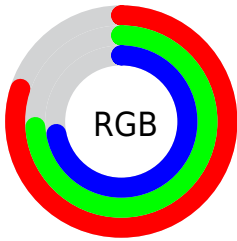
Format	Color
R _Y B	205, 189, 183
Decimal	13483191
CIE Lab	77.50, 5.16, 4.69
CIE LCh	77, 6.974, 42.274
Yxy	52.3645, 0.3309, 0.3351
Android (android.graphics.Color)	4291673271 (0xFFCDBC7)
YUV	192.5130, -4.6899, 10.9511
Hunter-Lab	72.3633, 0.9117, 7.8998

Details

The YUV color $192.5130, -4.6899, 10.9511$ is a light color, and the websafe version is hex `CCCCCC`. A complement of this color would be $195.4870, 4.6899, -10.9511$, and the grayscale version is $193.0000, 0.0000, 0.0000$.

A 20% lighter version of the original color is $246.7190, -3.8055, 7.2624$, and $139.2140, -4.5425, 10.3363$ is the 20% darker color. If you saturate the color by 10%, you get $180.8410, -8.7956, 21.1874$, and if you desaturate by 10%, it is $204.2990, -0.1474, 0.6148$.

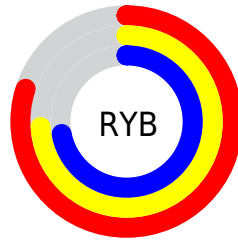
Distribution



Red (80%)

Green (74%)

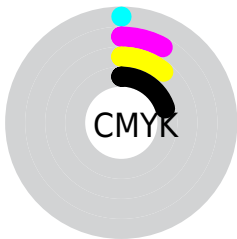
Blue (72%)



Red (80%)

Yellow (74%)

Blue (72%)

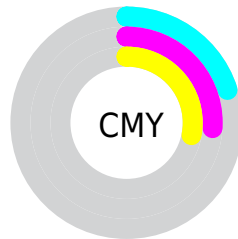


Cyan (0%)

Magenta (8%)

Yellow (11%)

Black (20%)



Cyan (20%)

Magenta (26%)

Yellow (28%)

Brightness & Saturation Gradients

These gradients show how the YUV color 192.5130, -4.6899, 10.9511 changes by changing the brightness by 10 percent. The first figure shows a shift by +10% for each color and the second figure -10%.

Similar to the brightness gradients but the following saturation gradients show a change of the YUV color 192.5130, -4.6899, 10.9511 by changing the saturation by 10% instead.

■ 192.5130, -4.6899,
10.9511

■ 192.5130, -4.6899,
10.9511

255.0000, 0.0000,
0.0000

■ 165.2140, -4.5425,
10.3363

■ 246.7190, -3.8055,
7.2624

■ 139.2140, -4.5425,
10.3363

■ 113.3280, -4.1057,
10.2363

■ 89.0290, -3.9583,
9.6216

■ 65.7300, -3.8109,
9.0068

■ 43.4310, -3.6635,
8.3920

■ 23.0180, -3.9529,

7.8772

■ 0.0000, 0.0000,
0.0000

■ 192.5130, -4.6899,
10.9511

■ 192.5130, -4.6899,
10.9511

■ 180.8410, -8.7956,
21.1874

■ 204.2990, -0.1474,
0.6148

■ 169.0550,
-13.3381, 31.5238

■ 215.9710, 3.9583,
-9.6216

■ 157.3830,
-17.4438, 41.7601

■ 227.7570, 8.5008,
-19.9579

■ 146.1840,
-22.2757, 51.5816

■ 237.7020, 8.5279,
-28.6797

■ 134.5120,
-26.3814, 61.8180

■ 240.0500, 7.3704,
-30.7388

■ 122.7260,
-30.9239, 72.1543

■ 110.9400,
-35.4664, 82.4906

■ 99.2680, -39.5721,
92.7270

■ 88.8840, -43.8198,
101.8337

Harmonies

Analogous

The Analogous color harmony consists of three colors that are next to each other on the color wheel.



192.9090, -1.9271, 11.4808



192.5130, -4.6899, 10.9511



192.0350, -6.4263, 7.8623

Triad

The Triadic color harmony groups three colors that are evenly spaced from another and form a triangle on the color wheel.



192.5130, -4.6899, 10.9511



189.6030, -1.2833, -8.4218



191.5850, 6.1206, -3.1440

Complementary

The Complementary color scheme is a pair of colors which are on the opposite of each other on the color wheel.



192.5130, -4.6899, 10.9511



195.4870, 4.6899, -10.9511

Split Complementary

Split-complementary colors differ from the complementary color scheme. The scheme consists of three colors, the original color and two neighbors of the complement color.



190.6660, 6.5737, -8.4771



192.5130, -4.6899, 10.9511



189.2050, 2.3639, -11.5808

Square

The Square scheme is like the rectangle color scheme, but the four colors are evenly spaced on the color wheel.



192.5130, -4.6899, 10.9511



190.5390, -4.2097, -3.1037



190.1880, 4.8373, -11.5659



192.4610, 4.2097, 3.1037

Rectangle

The Rectangle color scheme consists of four colors that form a rectangle on the color wheel.



192.5130, -4.6899, 10.9511



191.4260, -6.1260, 4.8884



190.1880, 4.8373, -11.5659



191.5740, 6.1260, -4.8884

Sweetspot

The Sweet Spot groups the original color and five complimentary colors.



192.5130, -4.6899, 10.9511



250.5660, -1.7580, 3.8886



191.5160, 4.1826, 11.8255



124.9680, -1.4632, 2.6591



0.0000, 0.0000, 0.0000



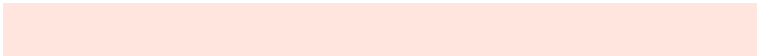
128.0000, 0.0000, 0.0000

Same Dimension

The Same Dimension uses a secret algorithm to generate beautiful new colors.



192.5130, -4.6899, 10.9511



235.9760, -6.8902, 16.6840



198.9700, -7.8732, 5.2883



96.1640, -2.0529, 5.1182



71.9400, -35.4664, 82.4906



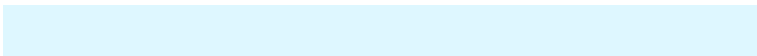
16.6450, -8.2060, 18.7283

Inverse Universe

The Inverse Universe completely reimagines the original color for something new.



195.4870, 4.6899, -10.9511



240.4370, 7.1796, -16.1692



189.0300, 7.8732, -5.2883



97.8360, 2.0529, -5.1182



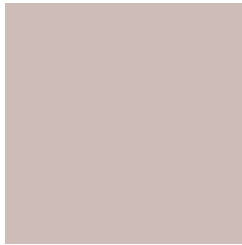
94.0600, 35.4664, -82.4906



21.9420, 7.9166, -19.2431

Previews

White Background



This preview shows how the YUV color 192.5130, -4.6899, 10.9511 looks on a white background.

Color Contrast Check

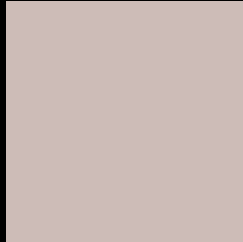
Large Text (above 18pt) WCAG AA × Fail

Any Text WCAG AA × Fail

Large Text (above 18pt) WCAG AAA × Fail

Any Text WCAG AAA × Fail

Black Background



This preview shows how the YUV color 192.5130, -4.6899, 10.9511 looks on a black background.

Color Contrast Check

Large Text (above 18pt) WCAG AA ✓ Pass

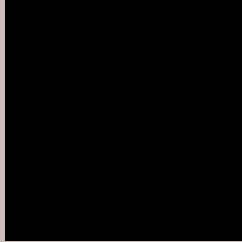
Any Text WCAG AA ✓ Pass

Large Text (above 18pt) WCAG AAA ✓ Pass

Any Text WCAG AAA ✓ Pass

If you want to check with other color combinations, try the [Color Contrast Checker](#).

YUV 192.5130, -4.6899, 10.9511 Background



This preview shows how black text looks on a background with the YUV color 192.5130, -4.6899, 10.9511.



This preview shows how white text looks on a background with the YUV color 192.5130, -4.6899,

Color Blindness Simulation

Color vision deficiency is a very complex topic, and I could not describe the different causes any better than Wikipedia does, so if you want to learn more, you should check out their [article about color blindness](#).

Dichromacy



Original Color

192.5130, -4.6899, 10.9511

Protanopia

191.9960, -3.9420, 4.3885

Deuteranopia

193.2580, -4.5642, 17.3137



Tritanopia

193.2880, 3.3090, 12.0254

Trichromacy



Original Color

192.5130, -4.6899, 10.9511

Protanomaly

192.3060, -4.0949, 6.7476

Deuteranomaly

192.9480, -4.4114, 14.9546

Tritanomaly

192.8920, 0.5462, 11.4957

Monochromacy



Original Color

192.5130, -4.6899, 10.9511

Achromatopsia

193.0000, 0.0000, 0.0000

Achromatomaly

192.5660, -1.7580, 3.8886

CSS Examples

Text

The CSS property to change the color of the text to YUV 192.5130, -4.6899, 10.9511 is called "color". The color property can be set on classes, ids or directly on the HTML element.

This example shows how text in the color `rgb(205, 188, 183)` looks like.

```
.text, #text, p{  
    color:rgb(205, 188, 183)  
}
```

If you want to add a text shadow in that color use the text-shadow property, you can generate a text shadow directly with our [CSS Text Shadow Generator](#).

Here you see how black text with a 4 pixel rgb(205, 188, 183) colored shadow looks like.

```
.shadow{ text-shadow: 4px 4px 2px rgb(205, 188, 183) }
```

Border

The CSS property to change the border of an element to YUV 192.5130, -4.6899, 10.9511 is called "border". The border property can be set on classes, ids or directly on the HTML element.

This example shows the color as border, it can be applied via the CSS property "border" or "border-color".

```
.border, #border, table{ border:4px solid rgb(205, 188, 183) }
```


If only the border color should be changed use the property `border-color`.

```
.border{ border-color:rgb(205, 188, 183) }
```

If you want to add a box shadow in that color use:

Here you see how a box with a 4 pixel `rgb(205, 188, 183)` colored shadow looks like.

```
.boxshadow{ -moz-box-shadow:4px 4px 4px  
4px rgb(205, 188, 183); -webkit-box-  
shadow:4px 4px 4px 4px rgb(205, 188, 183);  
box-shadow:4px 4px 4px 4px rgb(205, 188,  
183) }
```

Background

The CSS property to change the background color of an element to YUV 192.5130, -4.6899, 10.9511 is called "background". The background property can be set on classes, ids or directly on the HTML element.

```
.background, #background, body{  
background: rgb(205, 188, 183) }
```

If only the background color should be changed can be used:

```
.background{ background-color: rgb(205,  
188, 183) }
```

This example shows the color as background, it is applied via the CSS property "background".

To optimize and compress your CSS code, you can use our [online CSS compressor and optimizer](#) based on csstidy. If you want to create a linear or radial gradient as background or border, check our [CSS Gradient Generator](#).

Hey! You found this booklet interesting? Support Converting Colors with the new Membership Option!

The pro membership hides all ads, plus gives you double the colors in the color bucket, and more awesome pro features!

[Learn more, Memberships starting at \\$2.50/m!](#)

**Follow me
on Twitter!**

@ConvertingColor