

Converting Colors

YUV(192.9170, -3.9031,
38.6608)

Have a look what the booklet for
YUV(192.9170, -3.9031, 38.6608)
contains.

YUV(192.9170, -3.9031, 38.6608)	3
<i>Conversions</i>	4
<i>Details</i>	6
<i>Harmonies</i>	12
<i>Previews</i>	24
<i>Color Blindness Simulation</i>	28
<i>CSS Examples</i>	31

Color

**YUV(192.9170, -3.9031,
38.6608)**

Conversions

Conversions Part 1

Format	Color
Hex	EDACB9
RGB	237, 172, 185
RGB Percent	93%, 67%, 73%
CMY	0.0706, 0.3255, 0.2745
CMYK	0.00, 0.27, 0.22, 0.07
HSL	348°, 64%, 80%
HSV	348°, 27%, 93%
XYZ	58.4345, 51.0124, 52.6655
YIQ	192.9170, 34.5670, 17.8230

Conversions

Conversions Part 2

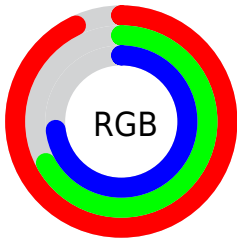
Format	Color
R _Y B	237, 172, 185
Decimal	15576249
CIE Lab	76.69, 25.64, 2.81
CIE LCh	77, 25.797, 6.252
Yxy	51.0124, 0.3605, 0.3147
Android (android.graphics.Color)	4293766329 (0xFFEDACB9)
YUV	192.9170, -3.9031, 38.6608
Hunter-Lab	71.4229, 21.0493, 6.2771

Details

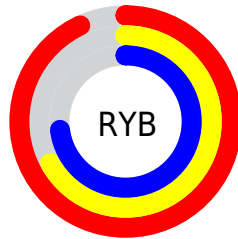
The YUV color **192.9170, -3.9031, 38.6608** is a light color, and the websafe version is hex **CC9999**. A complement of this color would be **216.0830, 3.9031, -38.6608**, and the grayscale version is **193.0000, 0.0000, 0.0000**.

A 20% lighter version of the original color is **237.5550, 1.6984, 15.2993**, and **138.7210, -3.3135, 36.2017** is the 20% darker color. If you saturate the color by 10%, you get **176.6630, -5.2569, 52.9155**, and if you desaturate by 10%, it is **209.1710, -2.5493, 24.4060**.

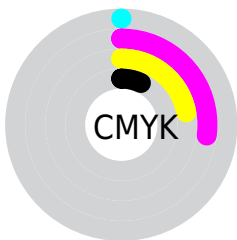
Distribution



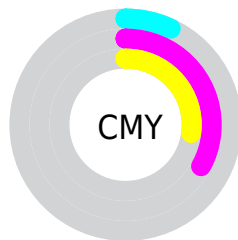
- Red (93%)
- Green (67%)
- Blue (73%)



- Red (93%)
- Yellow (67%)
- Blue (73%)



- Cyan (0%)
- Magenta (27%)
- Yellow (22%)
- Black (7%)



- Cyan (7%)
- Magenta (33%)
- Yellow (27%)

Brightness & Saturation Gradients

These gradients show how the YUV color 192.9170, -3.9031, 38.6608 changes by changing the brightness by 10 percent. The first figure shows a shift by +10% for each color and the second figure -10%.

Similar to the brightness gradients but the following saturation gradients show a change of the YUV color 192.9170, -3.9031, 38.6608 by changing the saturation by 10% instead.

■ 192.9170, -3.9031,
38.6608

■ 192.9170, -3.9031,
38.6608

255.0000, 0.0000,
0.0000

■ 165.3190, -3.6083,
37.4312

■ 237.5550, 1.6984,
15.2993

■ 138.7210, -3.3135,
36.2017

■ 113.1230, -3.0186,
34.9721

■ 88.2260, -2.5764,
33.1278

■ 63.7420, -1.8448,
31.7983

■ 39.9590, -0.9658,
29.8540

■ 17.4750, -0.2342,

28.5244

■ 7.2900, -3.1010,
14.6547

■ 0.0000, 0.0000,
0.0000

■ 192.9170, -3.9031,
38.6608

■ 192.9170, -3.9031,
38.6608

■ 176.6630, -5.2569,
52.9155

■ 209.1710, -2.5493,
24.4060

■ 160.9960, -6.9000,
66.6555

■ 224.8380, -0.9061,
10.6661

■ 144.7420, -8.2538,
80.9103

■ 241.0920, 0.4476,
-3.5887

■ 128.4880, -9.6076,
95.1650

■ 249.6180, 2.6533,
-11.0660

■ 112.8210,
-11.2508, 108.9050

■ 96.5670, -12.6045,
123.1597

■ 80.3130, -13.9583,
137.4145

■ 76.2210, -14.4060,
141.0032

Harmonies

Analogous

The Analogous color harmony consists of three colors that are next to each other on the color wheel.



193.5270, 7.6282, 26.7248



192.9170, -3.9031, 38.6608



191.7570, -14.6702, 38.8011

Triad

The Triadic color harmony groups three colors that are evenly spaced from another and form a triangle on the color wheel.



192.9170, -3.9031, 38.6608



184.7760, -17.1446, -7.6966



183.0500, 24.1323, -40.3859

Complementary

The Complementary color scheme is a pair of colors which are on the opposite of each other on the color wheel.



192.9170, -3.9031, 38.6608



216.0830, 3.9031, -38.6608

Split Complementary

Split-complementary colors differ from the complementary color scheme. The scheme consists of three colors, the original color and two neighbors of the complement color.



178.9040, 18.7813, -50.7818



192.9170, -3.9031, 38.6608



181.5050, -6.1650, -29.3839

Square

The Square scheme is like the rectangle color scheme, but the four colors are evenly spaced on the color wheel.



192.9170, -3.9031, 38.6608



187.5290, -22.4458, 12.6911



179.2500, 7.2717, -45.8233



188.3670, 23.4831, -18.7389

Rectangle

The Rectangle color scheme consists of four colors that form a rectangle on the color wheel.



192.9170, -3.9031, 38.6608



190.6440, -20.0375, 33.6382



179.2500, 7.2717, -45.8233



181.3760, 22.9856, -45.9338

Sweetspot

The Sweet Spot groups the original color and five complimentary colors.



192.9170, -3.9031, 38.6608



241.4360, -1.2009, 11.8956



194.9580, 20.7267, 25.4698



119.1150, -1.0427, 7.7921



0.0000, 0.0000, 0.0000



128.0000, 0.0000, 0.0000

Same Dimension

The Same Dimension uses a secret algorithm to generate beautiful new colors.



192.9170, -3.9031, 38.6608



198.0540, -4.9566, 49.9416



203.1750, -15.3693, 29.6645



109.5170, -0.7479, 6.5626



58.2230, -10.9559, 107.6754



17.4000, -3.1552, 32.0982

Inverse Universe

The Inverse Universe completely reimagines the original color for something new.



192.9170, -3.9031, 38.6608



198.0540, -4.9566, 49.9416



205.8250, 15.3693, -29.6645



109.5170, -0.7479, 6.5626



58.2230, -10.9559, 107.6754



17.4000, -3.1552, 32.0982

Previews

White Background



This preview shows how the YUV color 192.9170, -3.9031, 38.6608 looks on a white background.

Color Contrast Check

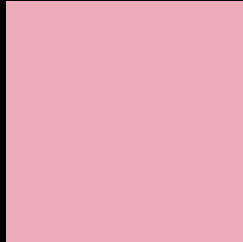
Large Text (above 18pt) WCAG AA × Fail

Any Text WCAG AA × Fail

Large Text (above 18pt) WCAG AAA × Fail

Any Text WCAG AAA × Fail

Black Background



This preview shows how the YUV color 192.9170, -3.9031, 38.6608 looks on a black background.

Color Contrast Check

Large Text (above 18pt) WCAG AA ✓ Pass

Any Text WCAG AA ✓ Pass

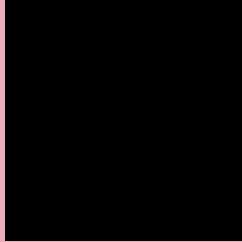
Large Text (above 18pt) WCAG AAA ✓ Pass

Any Text WCAG AAA ✓ Pass

If you want to check with other color combinations, try the [Color Contrast Checker](#).

YUV 192.9170, -3.9031, 38.6608

Background



This preview shows how black text looks on a background with the YUV color 192.9170, -3.9031, 38.6608.



This preview shows how white text looks on a background with the YUV color 192.9170, -3.9031,

38.6608.

Color Blindness Simulation

Color vision deficiency is a very complex topic, and I could not describe the different causes any better than Wikipedia does, so if you want to learn more, you should check out their [article about color blindness](#).

Dichromacy



Original Color

192.9170, -3.9031, 38.6608

Protanopia

190.2820, 2.3260, 0.6297

Deuteranopia

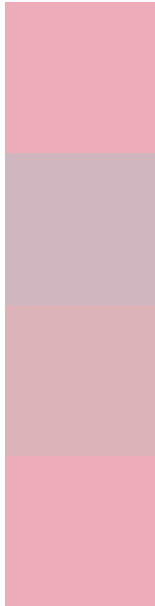
191.0730, -3.9800, 16.5990



Tritanopia

192.9170, -3.9031, 38.6608

Trichromacy



Original Color

192.9170, -3.9031, 38.6608

Protanomaly

191.3870, -0.1908, 14.5696

Deuteranomaly

191.8290, -3.8597, 24.7060

Tritanomaly

192.9170, -3.9031, 38.6608

Monochromacy



Original Color

192.9170, -3.9031, 38.6608

Achromatopsia

193.0000, 0.0000, 0.0000

Achromatomaly

192.7460, -1.3538, 14.2548

CSS Examples

Text

The CSS property to change the color of the text to YUV 192.9170, -3.9031, 38.6608 is called "color". The color property can be set on classes, ids or directly on the HTML element.

This example shows how text in the color `rgb(237, 172, 185)` looks like.

```
.text, #text, p{  
    color:rgb(237, 172, 185)  
}
```

If you want to add a text shadow in that color use the text-shadow property, you can generate a text shadow directly with our [CSS Text Shadow Generator](#).

Here you see how black text with a 4 pixel rgb(237, 172, 185) colored shadow looks like.

```
.shadow{ text-shadow: 4px 4px 2px rgb(237, 172, 185) }
```

Border

The CSS property to change the border of an element to YUV 192.9170, -3.9031, 38.6608 is called "border". The border property can be set on classes, ids or directly on the HTML element.

This example shows the color as border, it can be applied via the CSS property "border" or "border-color".

```
.border, #border, table{ border:4px solid rgb(237, 172, 185) }
```


If only the border color should be changed use the property `border-color`.

```
.border{ border-color:rgb(237, 172, 185) }
```

If you want to add a box shadow in that color use:

Here you see how a box with a 4 pixel `rgb(237, 172, 185)` colored shadow looks like.

```
.boxshadow{ -moz-box-shadow:4px 4px 4px  
4px rgb(237, 172, 185); -webkit-box-  
shadow:4px 4px 4px 4px rgb(237, 172, 185);  
box-shadow:4px 4px 4px 4px rgb(237, 172,  
185) }
```

Background

The CSS property to change the background color of an element to YUV 192.9170, -3.9031, 38.6608 is called "background". The background property can be set on classes, ids or directly on the HTML element.

```
.background, #background, body{  
background: rgb(237, 172, 185) }
```

If only the background color should be changed can be used:

```
.background{ background-color: rgb(237,  
172, 185) }
```

This example shows the color as background, it is applied via the CSS property "background".

To optimize and compress your CSS code, you can use our [online CSS compressor and optimizer](#) based on csstidy. If you want to create a linear or radial gradient as background or border, check our [CSS Gradient Generator](#).

Hey! You found this booklet interesting? Support Converting Colors with the new Membership Option!

The pro membership hides all ads, plus gives you double the colors in the color bucket, and more awesome pro features!

[Learn more, Memberships starting at \\$2.50/m!](#)

**Follow me
on Twitter!**

@ConvertingColor