

Converting Colors

YUV(192.9700, -21.1842,
28.0903)

Have a look what the booklet for
YUV(192.9700, -21.1842, 28.0903)
contains.

YUV(192.9700, -21.1842, 28.0903)	3
<i>Conversions</i>	4
<i>Details</i>	6
<i>Harmonies</i>	12
<i>Previews</i>	24
<i>Color Blindness Simulation</i>	28
<i>CSS Examples</i>	31

Color

**YUV(192.9700, -21.1842,
28.0903)**

Conversions

Conversions Part 1

Format	Color
Hex	E1B996
RGB	225, 185, 150
RGB Percent	88%, 73%, 59%
CMY	0.1176, 0.2745, 0.4118
CMYK	0.00, 0.18, 0.33, 0.12
HSL	28°, 56%, 74%
HSV	28°, 33%, 88%
XYZ	53.9053, 52.9075, 36.2252
YIQ	192.9700, 35.0750, -2.4050

Conversions

Conversions Part 2

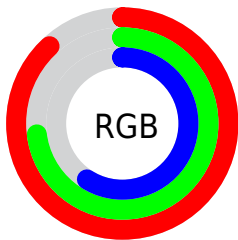
Format	Color
R _Y B	225, 216, 150
Decimal	14793110
CIE Lab	77.82, 9.48, 23.18
CIE LCh	78, 25.037, 67.762
Yxy	52.9075, 0.3769, 0.3699
Android (android.graphics.Color)	4292983190 (0xFFE1B996)
YUV	192.9700, -21.1842, 28.0903
Hunter-Lab	72.7375, 4.9945, 21.3883

Details

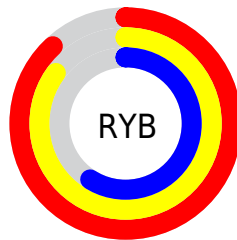
The YUV color $192.9700, -21.1842, 28.0903$ is a light color, and the websafe version is hex FFCC99 . A complement of this color would be $182.0300, 21.1842, -28.0903$, and the grayscale version is $193.0000, 0.0000, 0.0000$.

A 20% lighter version of the original color is $240.9680, -18.2252, 12.3061$, and $139.0020, -19.7210, 25.4312$ is the 20% darker color. If you saturate the color by 10%, you get $183.3040, -27.7579, 36.5674$, and if you desaturate by 10%, it is $202.6360, -14.6105, 19.6132$.

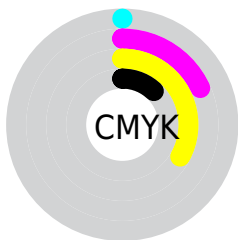
Distribution



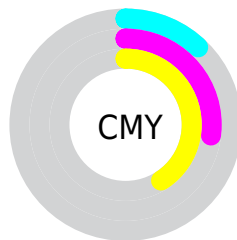
- Red (88%)
- Green (73%)
- Blue (59%)



- Red (88%)
- Yellow (85%)
- Blue (59%)



- Cyan (0%)
- Magenta (18%)
- Yellow (33%)
- Black (12%)



- Cyan (12%)
- Magenta (27%)
- Yellow (41%)

Brightness & Saturation Gradients

These gradients show how the YUV color 192.9700, -21.1842, 28.0903 changes by changing the brightness by 10 percent. The first figure shows a shift by +10% for each color and the second figure -10%.

Similar to the brightness gradients but the following saturation gradients show a change of the YUV color 192.9700, -21.1842, 28.0903 by changing the saturation by 10% instead.

■ 192.9700,
-21.1842, 28.0903

■ 192.9700,
-21.1842, 28.0903

255.0000, 0.0000,
0.0000

■ 165.4860,
-20.4526, 26.7608

■ 240.9680,
-18.2252, 12.3061

■ 139.0020,
-19.7210, 25.4312

■ 252.4920, -9.6096,
2.1995

■ 113.5180,
-18.9894, 24.1017

■ 89.0340, -18.2578,
22.7722

■ 64.6640, -17.0894,
21.3427

■ 42.2400, -17.3733,
19.0835

■ 22.5260, -11.1053,

15.3247

■ 0.0000, 0.0000,
0.0000

■ 192.9700,
-21.1842, 28.0903

■ 192.9700,
-21.1842, 28.0903

■ 183.3040,
-27.7579, 36.5674

■ 202.6360,
-14.6105, 19.6132

■ 173.7520,
-33.8947, 44.9445

■ 212.1880, -8.4737,
11.2361

■ 164.2000,
-40.0316, 53.3216

■ 221.8540, -1.9000,
2.7590

■ 154.5340,
-46.6053, 61.7987

■ 231.4060, 4.2368,
-5.6181

■ 144.9820,
-52.7421, 70.1758

■ 240.1600, 7.3161,
-13.2953

■ 135.3160,
-59.3158, 78.6529

■ 246.0300, 4.4222,
-18.4433

■ 128.9100,
-63.5526, 84.2709

Harmonies

Analogous

The Analogous color harmony consists of three colors that are next to each other on the color wheel.



194.4580, -14.5228, 38.1863



192.9700, -21.1842, 28.0903



190.9310, -22.1510, 11.4615

Triad

The Triadic color harmony groups three colors that are evenly spaced from another and form a triangle on the color wheel.



192.9700, -21.1842, 28.0903



182.6630, 7.5611, -45.3085



195.1100, 16.7078, 7.7965

Complementary

The Complementary color scheme is a pair of colors which are on the opposite of each other on the color wheel.



192.9700, -21.1842, 28.0903



182.0300, 21.1842, -28.0903

Split Complementary

Split-complementary colors differ from the complementary color scheme. The scheme consists of three colors, the original color and two neighbors of the complement color.



191.5630, 22.8934, -16.2798



192.9700, -21.1842, 28.0903



182.8010, 18.3391, -48.9375

Square

The Square scheme is like the rectangle color scheme, but the four colors are evenly spaced on the color wheel.



192.9700, -21.1842, 28.0903



185.0320, -5.4388, -28.9691



186.9470, 23.6901, -38.5415



196.5980, 6.6072, 27.5396

Rectangle

The Rectangle color scheme consists of four colors that form a rectangle on the color wheel.



192.9700, -21.1842, 28.0903



189.3530, -18.9080, -2.0636



186.9470, 23.6901, -38.5415



194.3370, 19.0609, -0.2955

Sweetspot

The Sweet Spot groups the original color and five complimentary colors.



192.9700, -21.1842, 28.0903



243.9320, -6.8685, 9.7066



176.9850, 6.4164, 42.1092



120.8930, -4.3842, 6.2328



0.0000, 0.0000, 0.0000



128.0000, 0.0000, 0.0000

Same Dimension

The Same Dimension uses a secret algorithm to generate beautiful new colors.



192.9700, -21.1842, 28.0903



211.6740, -28.9263, 37.9969



215.2760, -32.1811, 8.5279



107.2240, -3.0684, 4.1886



100.7580, -49.6737, 65.9872



27.8530, -13.7315, 17.6689

Inverse Universe

The Inverse Universe completely reimagines the original color for something new.



182.0300, 21.1842, -28.0903



196.3260, 28.9263, -37.9969



160.3110, 31.8917, -9.0427



105.7760, 3.0684, -4.1886



75.2420, 49.6737, -65.9872



20.7340, 13.4421, -18.1837

Previews

White Background



This preview shows how the YUV color 192.9700, -21.1842, 28.0903 looks on a white background.

Color Contrast Check

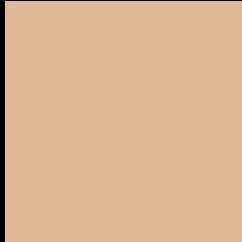
Large Text (above 18pt) WCAG AA × Fail

Any Text WCAG AA × Fail

Large Text (above 18pt) WCAG AAA × Fail

Any Text WCAG AAA × Fail

Black Background



This preview shows how the YUV color 192.9700, -21.1842, 28.0903 looks on a black background.

Color Contrast Check

Large Text (above 18pt) WCAG AA ✓ Pass

Any Text WCAG AA ✓ Pass

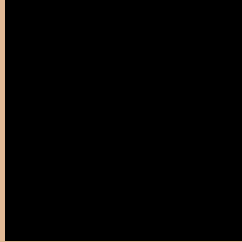
Large Text (above 18pt) WCAG AAA ✓ Pass

Any Text WCAG AAA ✓ Pass

If you want to check with other color combinations, try the [Color Contrast Checker](#).

YUV 192.9700, -21.1842, 28.0903

Background



This preview shows how black text looks on a background with the YUV color 192.9700, -21.1842, 28.0903.



This preview shows how white text looks on a background with the YUV color 192.9700, -21.1842, 28.0903.

Color Blindness Simulation

Color vision deficiency is a very complex topic, and I could not describe the different causes any better than Wikipedia does, so if you want to learn more, you should check out their [article about color blindness](#).

Dichromacy



Original Color

192.9700, -21.1842, 28.0903

Protanopia

191.4410, -18.9514, 11.8912

Deuteranopia

192.9700, -21.1842, 28.0903



Tritanopia

195.8450, -1.4026, 29.9539

Trichromacy



Original Color

192.9700, -21.1842, 28.0903

Protanomaly

191.6590, -19.5519, 17.8391

Deuteranomaly

192.9700, -21.1842, 28.0903

Tritanomaly

194.5970, -8.6753, 29.2944

Monochromacy



Original Color

192.9700, -21.1842, 28.0903

Achromatopsia

193.0000, 0.0000, 0.0000

Achromatomaly

193.0030, -7.8895, 10.5214

CSS Examples

Text

The CSS property to change the color of the text to YUV 192.9700, -21.1842, 28.0903 is called "color". The color property can be set on classes, ids or directly on the HTML element.

This example shows how text in the color `rgb(225, 185, 150)` looks like.

```
.text, #text, p{  
    color:rgb(225, 185, 150)  
}
```

If you want to add a text shadow in that color use the text-shadow property, you can generate a text shadow directly with our [CSS Text Shadow Generator](#).

Here you see how black text with a 4 pixel rgb(225, 185, 150) colored shadow looks like.

```
.shadow{ text-shadow: 4px 4px 2px rgb(225, 185, 150) }
```

Border

The CSS property to change the border of an element to YUV 192.9700, -21.1842, 28.0903 is called "border".

The border property can be set on classes, ids or directly on the HTML element.

This example shows the color as border, it can be applied via the CSS property "border" or "border-color".

```
.border, #border, table{ border:4px solid rgb(225, 185, 150) }
```


If only the border color should be changed use the property `border-color`.

```
.border{ border-color:rgb(225, 185, 150) }
```

If you want to add a box shadow in that color use:

Here you see how a box with a 4 pixel `rgb(225, 185, 150)` colored shadow looks like.

```
.boxshadow{ -moz-box-shadow:4px 4px 4px  
4px rgb(225, 185, 150); -webkit-box-  
shadow:4px 4px 4px 4px rgb(225, 185, 150);  
box-shadow:4px 4px 4px 4px rgb(225, 185,  
150) }
```

Background

The CSS property to change the background color of an element to YUV 192.9700, -21.1842, 28.0903 is called "background". The background property can be set on classes, ids or directly on the HTML element.

```
.background, #background, body{  
background: rgb(225, 185, 150) }
```

If only the background color should be changed can be used:

```
.background{ background-color: rgb(225,  
185, 150) }
```

This example shows the color as background, it is applied via the CSS property "background".

To optimize and compress your CSS code, you can use our [online CSS compressor and optimizer](#) based on csstidy. If you want to create a linear or radial gradient as background or border, check our [CSS Gradient Generator](#).

Hey! You found this booklet interesting? Support Converting Colors with the new Membership Option!

The pro membership hides all ads, plus gives you double the colors in the color bucket, and more awesome pro features!

[Learn more, Memberships starting at \\$2.50/m!](#)

**Follow me
on Twitter!**

@ConvertingColor