

Converting Colors

YUV(193.0320, -28.6098,
29.7899)

Have a look what the booklet for
YUV(193.0320, -28.6098, 29.7899)
contains.

YUV(193.0320, -28.6098, 29.7899)	3
<i>Conversions</i>	4
<i>Details</i>	6
<i>Harmonies</i>	12
<i>Previews</i>	24
<i>Color Blindness Simulation</i>	28
<i>CSS Examples</i>	31

Color

**YUV(193.0320, -28.6098,
29.7899)**

Conversions

Conversions Part 1

Format	Color
Hex	E3BB87
RGB	227, 187, 135
RGB Percent	89%, 73%, 53%
CMY	0.1098, 0.2667, 0.4706
CMYK	0.00, 0.18, 0.41, 0.11
HSL	34°, 62%, 71%
HSV	34°, 41%, 89%
XYZ	53.8221, 53.6208, 30.4348
YIQ	193.0320, 40.5320, -7.6920

Conversions

Conversions Part 2

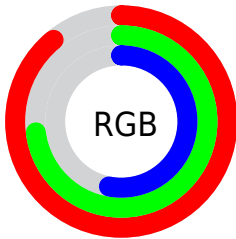
Format	Color
R _Y B	206, 227, 135
Decimal	14924679
CIE Lab	78.24, 7.45, 31.72
CIE LCh	78, 32.579, 76.776
Yxy	53.6208, 0.3904, 0.3889
Android (android.graphics.Color)	4293114759 (0xFFE3BB87)
YUV	193.0320, -28.6098, 29.7899
Hunter-Lab	73.2262, 3.0535, 26.6158

Details

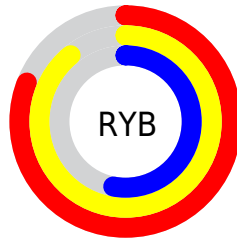
The YUV color $193.0320, -28.6098, 29.7899$ is a light color, and the websafe version is hex FFCC99 . A complement of this color would be $168.9680, 28.6098, -29.7899$, and the grayscale version is $193.0000, 0.0000, 0.0000$.

A 20% lighter version of the original color is $240.4320, -25.3560, 12.7761$, and $139.1780, -26.7098, 27.0309$ is the 20% darker color. If you saturate the color by 10%, you get $184.5400, -35.7622, 37.2374$, and if you desaturate by 10%, it is $201.5240, -21.4573, 22.3425$.

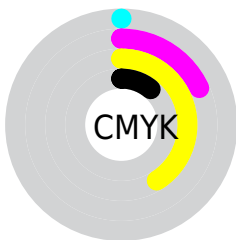
Distribution



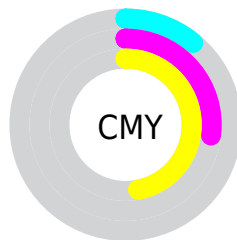
- Red (89%)
- Green (73%)
- Blue (53%)



- Red (81%)
- Yellow (89%)
- Blue (53%)



- Cyan (0%)
- Magenta (18%)
- Yellow (41%)
- Black (11%)



- Cyan (11%)
- Magenta (27%)
- Yellow (47%)

Brightness & Saturation Gradients

These gradients show how the YUV color 193.0320, -28.6098, 29.7899 changes by changing the brightness by 10 percent. The first figure shows a shift by +10% for each color and the second figure -10%.

Similar to the brightness gradients but the following saturation gradients show a change of the YUV color 193.0320, -28.6098, 29.7899 by changing the saturation by 10% instead.

■ 193.0320,
-28.6098, 29.7899

■ 193.0320,
-28.6098, 29.7899

255.0000, 0.0000,
0.0000

■ 165.5480,
-27.8782, 28.4604

■ 240.4320,
-25.3560, 12.7761

■ 139.1780,
-26.7098, 27.0309

■ 250.6680,
-16.5983, 3.7992

■ 113.3950,
-25.8307, 25.0866

■ 253.8600, -4.3680,
0.9998

■ 88.0250, -24.6623,
23.6571

■ 64.1280, -24.2201,
21.8127

■ 42.9150, -21.1571,
19.3685

■ 23.4010, -11.5367,

13.6803

■ 0.0000, 0.0000,
0.0000

■ 193.0320,
-28.6098, 29.7899

■ 193.0320,
-28.6098, 29.7899

■ 184.5400,
-35.7622, 37.2374

■ 201.5240,
-21.4573, 22.3425

■ 176.1620,
-42.4779, 44.5849

■ 209.9020,
-14.7417, 14.9949

■ 167.6700,
-49.6303, 52.0324

■ 218.3940, -7.5892,
7.5475

■ 159.7650,
-57.0721, 58.9651

■ 226.2990, -0.1474,
0.6148

■ 151.3870,
-63.7878, 66.3126

■ 234.7910, 7.0050,
-6.8327

■ 143.0090,
-70.5034, 73.6601

■ 241.3450, 6.7319,
-12.5806

■ 246.6280, 4.1274,
-17.2138

Harmonies

Analogous

The Analogous color harmony consists of three colors that are next to each other on the color wheel.



194.9660, -21.6752, 45.6338



193.0320, -28.6098, 29.7899



190.2310, -27.2289, 6.8134

Triad

The Triadic color harmony groups three colors that are evenly spaced from another and form a triangle on the color wheel.



193.0320, -28.6098, 29.7899



177.4090, 16.0674, -67.0107



197.9310, 18.2750, 18.4775

Complementary

The Complementary color scheme is a pair of colors which are on the opposite of each other on the color wheel.



193.0320, -28.6098, 29.7899



168.9680, 28.6098, -29.7899

Split Complementary

Split-complementary colors differ from the complementary color scheme. The scheme consists of three colors, the original color and two neighbors of the complement color.



194.2520, 27.9768, -13.3760



193.0320, -28.6098, 29.7899



179.0250, 28.5817, -67.5509

Square

The Square scheme is like the rectangle color scheme, but the four colors are evenly spaced on the color wheel.



193.0320, -28.6098, 29.7899



181.3610, -1.1640, -46.7976



186.4930, 32.2950, -45.1594



197.9310, 4.9640, 41.2795

Rectangle

The Rectangle color scheme consists of four colors that form a rectangle on the color wheel.



193.0320, -28.6098, 29.7899



187.9020, -21.6437, -11.3151



186.4930, 32.2950, -45.1594



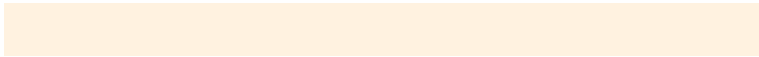
196.9020, 22.2333, 8.8559

Sweetspot

The Sweet Spot groups the original color and five complimentary colors.



193.0320, -28.6098, 29.7899



243.8350, -9.7787, 9.7917



167.1820, 4.3473, 52.4604



121.2520, -5.5472, 5.9180



0.0000, 0.0000, 0.0000



128.0000, 0.0000, 0.0000

Same Dimension

The Same Dimension uses a secret algorithm to generate beautiful new colors.



193.0320, -28.6098, 29.7899



209.0520, -38.9726, 40.2964



215.0170, -39.4484, 6.1241



110.6970, -3.7946, 3.7737



112.8080, -55.6143, 58.0504



32.2720, -15.9101, 16.4245

Inverse Universe

The Inverse Universe completely reimagines the original color for something new.



168.9680, 28.6098, -29.7899



175.9480, 38.9726, -40.2964



146.9830, 39.4484, -6.1241



107.3030, 3.7946, -3.7737



66.1920, 55.6143, -58.0504



18.7280, 15.9101, -16.4245

Previews

White Background



This preview shows how the YUV color 193.0320, -28.6098, 29.7899 looks on a white background.

Color Contrast Check

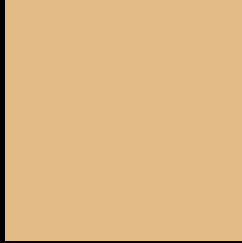
Large Text (above 18pt) WCAG AA × Fail

Any Text WCAG AA × Fail

Large Text (above 18pt) WCAG AAA × Fail

Any Text WCAG AAA × Fail

Black Background



This preview shows how the YUV color 193.0320, -28.6098, 29.7899 looks on a black background.

Color Contrast Check

Large Text (above 18pt) WCAG AA ✓ Pass

Any Text WCAG AA ✓ Pass

Large Text (above 18pt) WCAG AAA ✓ Pass

Any Text WCAG AAA ✓ Pass

If you want to check with other color combinations, try the [Color Contrast Checker](#).

YUV 193.0320, -28.6098, 29.7899

Background



This preview shows how black text looks on a background with the YUV color 193.0320, -28.6098, 29.7899.



This preview shows how white text looks on a background with the YUV color 193.0320, -28.6098,

29.7899.

Color Blindness Simulation

Color vision deficiency is a very complex topic, and I could not describe the different causes any better than Wikipedia does, so if you want to learn more, you should check out their [article about color blindness](#).

Dichromacy



Original Color

193.0320, -28.6098, 29.7899

Protanopia

192.1010, -26.6718, 14.8204

Deuteranopia

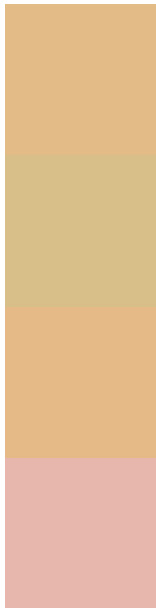
193.0540, -28.6206, 33.2786



Tritanopia

196.7420, -1.8448, 31.7983

Trichromacy



Original Color

193.0320, -28.6098, 29.7899

Protanomaly

192.3190, -27.2723, 20.7682

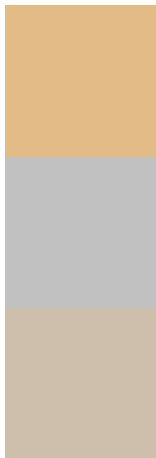
Deuteranomaly

193.3420, -28.7626, 32.1491

Tritanomaly

195.5110, -11.5909, 31.1239

Monochromacy



Original Color

193.0320, -28.6098, 29.7899

Achromatopsia

193.0000, 0.0000, 0.0000

Achromatomaly

193.0200, -10.3629, 10.5065

CSS Examples

Text

The CSS property to change the color of the text to YUV 193.0320, -28.6098, 29.7899 is called "color". The color property can be set on classes, ids or directly on the HTML element.

This example shows how text in the color `rgb(227, 187, 135)` looks like.

```
.text, #text, p{  
    color:rgb(227, 187, 135)  
}
```

If you want to add a text shadow in that color use the text-shadow property, you can generate a text shadow directly with our [CSS Text Shadow Generator](#).

Here you see how black text with a 4 pixel rgb(227, 187, 135) colored shadow looks like.

```
.shadow{ text-shadow: 4px 4px 2px rgb(227, 187, 135) }
```

Border

The CSS property to change the border of an element to YUV 193.0320, -28.6098, 29.7899 is called "border".

The border property can be set on classes, ids or directly on the HTML element.

This example shows the color as border, it can be applied via the CSS property "border" or "border-color".

```
.border, #border, table{ border:4px solid rgb(227, 187, 135) }
```


If only the border color should be changed use the property `border-color`.

```
.border{ border-color:rgb(227, 187, 135) }
```

If you want to add a box shadow in that color use:

Here you see how a box with a 4 pixel `rgb(227, 187, 135)` colored shadow looks like.

```
.boxshadow{ -moz-box-shadow:4px 4px 4px 4px rgb(227, 187, 135); -webkit-box-shadow:4px 4px 4px 4px rgb(227, 187, 135); box-shadow:4px 4px 4px 4px rgb(227, 187, 135) }
```

Background

The CSS property to change the background color of an element to YUV 193.0320, -28.6098, 29.7899 is called "background". The background property can be set on classes, ids or directly on the HTML element.

```
.background, #background, body{  
background: rgb(227, 187, 135) }
```

If only the background color should be changed can be used:

```
.background{ background-color: rgb(227,  
187, 135) }
```

This example shows the color as background, it is applied via the CSS property "background".

To optimize and compress your CSS code, you can use our [online CSS compressor and optimizer](#) based on csstidy. If you want to create a linear or radial gradient as background or border, check our [CSS Gradient Generator](#).

Hey! You found this booklet interesting? Support Converting Colors with the new Membership Option!

The pro membership hides all ads, plus gives you double the colors in the color bucket, and more awesome pro features!

[Learn more, Memberships starting at \\$2.50/m!](#)

**Follow me
on Twitter!**

@ConvertingColor