

Converting Colors

YUV(193.1050, -2.5168,
13.9399)

Have a look what the booklet for
YUV(193.1050, -2.5168, 13.9399)
contains.

YUV(193.1050, -2.5168, 13.9399)	3
<i>Conversions</i>	4
<i>Details</i>	6
<i>Harmonies</i>	12
<i>Previews</i>	24
<i>Color Blindness Simulation</i>	28
<i>CSS Examples</i>	31

Color

**YUV(193.1050, -2.5168,
13.9399)**

Conversions

Conversions Part 1

Format	Color
Hex	D1BABC
RGB	209, 186, 188
RGB Percent	82%, 73%, 74%
CMY	0.1804, 0.2706, 0.2627
CMYK	0.00, 0.11, 0.10, 0.18
HSL	355°, 20%, 77%
HSV	355°, 11%, 82%
XYZ	52.9305, 52.3040, 54.8829
YIQ	193.1050, 13.0660, 5.4980

Conversions

Conversions Part 2

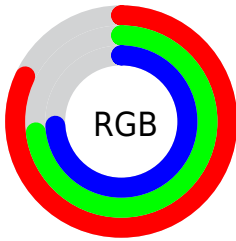
Format	Color
R _Y B	209, 186, 188
Decimal	13744828
CIE Lab	77.46, 8.51, 1.97
CIE LCh	77, 8.735, 13.060
Yxy	52.3040, 0.3306, 0.3267
Android (android.graphics.Color)	4291934908 (0xFFD1BABC)
YUV	193.1050, -2.5168, 13.9399
Hunter-Lab	72.3215, 4.0776, 5.6314

Details

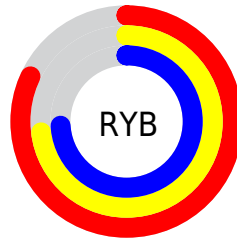
The YUV color **193.1050, -2.5168, 13.9399** is a light color, and the websafe version is hex **CCCCCC**. A complement of this color would be **201.8950, 2.5168, -13.9399**, and the grayscale version is **193.0000, 0.0000, 0.0000**.

A 20% lighter version of the original color is **246.1150, -1.0427, 7.7921**, and **139.5070, -2.2220, 12.7104** is the 20% darker color. If you saturate the color by 10%, you get **178.6120, -4.7387, 26.6503**, and if you desaturate by 10%, it is **207.5980, -0.2948, 1.2296**.

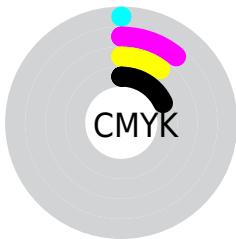
Distribution



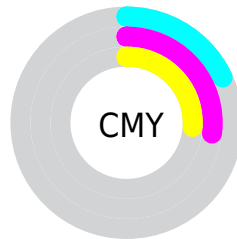
- Red (82%)
- Green (73%)
- Blue (74%)



- Red (82%)
- Yellow (73%)
- Blue (74%)



- Cyan (0%)
- Magenta (11%)
- Yellow (10%)
- Black (18%)



- Cyan (18%)
- Magenta (27%)
- Yellow (26%)

Brightness & Saturation Gradients

These gradients show how the YUV color 193.1050, -2.5168, 13.9399 changes by changing the brightness by 10 percent. The first figure shows a shift by +10% for each color and the second figure -10%.

Similar to the brightness gradients but the following saturation gradients show a change of the YUV color 193.1050, -2.5168, 13.9399 by changing the saturation by 10% instead.

■ 193.1050, -2.5168,
13.9399

■ 193.1050, -2.5168,
13.9399

255.0000, 0.0000,
0.0000

■ 165.8060, -2.3694,
13.3251

■ 246.1150, -1.0427,
7.7921

■ 139.5070, -2.2220,
12.7104

■ 114.2080, -2.0745,
12.0956

■ 89.2080, -2.0745,
12.0956

■ 65.9090, -1.9271,
11.4808

■ 43.6100, -1.7797,
10.8660

■ 23.0120, -1.4849,

9.6365

■ 0.0000, 0.0000,
0.0000

■ 193.1050, -2.5168,
13.9399

■ 193.1050, -2.5168,
13.9399

■ 178.6120, -4.7387,
26.6503

■ 207.5980, -0.2948,
1.2296

■ 164.1190, -6.9607,
39.3606

■ 222.0910, 1.9271,
-11.4808

■ 149.6260, -9.1826,
52.0710

■ 236.5840, 4.1491,
-24.1912

■ 135.1330,
-11.4046, 64.7814

■ 241.2460, 6.7807,
-28.2797

■ 121.2270,
-13.9159, 76.9769

■ 106.7340,
-16.1379, 89.6873

■ 92.1270, -18.7966,
102.4976

■ 77.6340, -21.0186,
115.2080

■ 64.5430, -22.9457,
126.6888

Harmonies

Analogous

The Analogous color harmony consists of three colors that are next to each other on the color wheel.



192.8210, 1.5672, 10.6810



193.1050, -2.5168, 13.9399



192.5950, -5.7163, 13.5102

Triad

The Triadic color harmony groups three colors that are evenly spaced from another and form a triangle on the color wheel.



193.1050, -2.5168, 13.9399



189.5990, -5.2253, -4.0333



190.1110, 8.3263, -10.6213

Complementary

The Complementary color scheme is a pair of colors which are on the opposite of each other on the color wheel.



193.1050, -2.5168, 13.9399



201.8950, 2.5168, -13.9399

Split Complementary

Split-complementary colors differ from the complementary color scheme. The scheme consists of three colors, the original color and two neighbors of the complement color.



188.9210, 6.4479, -14.8397



193.1050, -2.5168, 13.9399



189.1790, -1.5672, -10.6810

Square

The Square scheme is like the rectangle color scheme, but the four colors are evenly spaced on the color wheel.



193.1050, -2.5168, 13.9399



190.7740, -7.2836, 2.8292



188.7100, 3.1010, -14.6547



191.6280, 7.5784, -4.0588

Rectangle

The Rectangle color scheme consists of four colors that form a rectangle on the color wheel.



193.1050, -2.5168, 13.9399



191.8290, -7.3107, 11.5510



188.7100, 3.1010, -14.6547



189.8720, 7.4581, -12.1657

Sweetspot

The Sweet Spot groups the original color and five complimentary colors.



193.1050, -2.5168, 13.9399



249.5060, -0.7425, 4.8182



194.9010, 6.9508, 10.6108



123.9080, -0.4476, 3.5887



0.0000, 0.0000, 0.0000



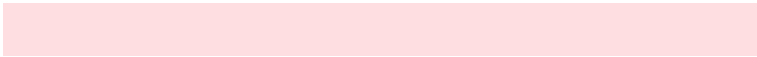
128.0000, 0.0000, 0.0000

Same Dimension

The Same Dimension uses a secret algorithm to generate beautiful new colors.



193.1050, -2.5168, 13.9399



232.2090, -3.5540, 19.9877



198.1600, -5.9949, 9.5067



97.4030, -1.1847, 6.6626



51.9420, -18.2124, 101.7829



12.7150, -4.2965, 24.8059

Inverse Universe

The Inverse Universe completely reimagines the original color for something new.



193.1050, -2.5168, 13.9399



232.2090, -3.5540, 19.9877



196.8400, 5.9949, -9.5067



97.4030, -1.1847, 6.6626



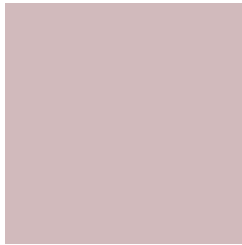
51.9420, -18.2124, 101.7829



12.7150, -4.2965, 24.8059

Previews

White Background



This preview shows how the YUV color 193.1050, -2.5168, 13.9399 looks on a white background.

Color Contrast Check

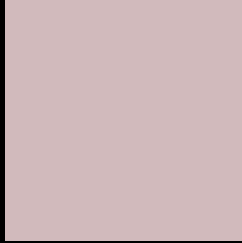
Large Text (above 18pt) WCAG AA × Fail

Any Text WCAG AA × Fail

Large Text (above 18pt) WCAG AAA × Fail

Any Text WCAG AAA × Fail

Black Background



This preview shows how the YUV color 193.1050, -2.5168, 13.9399 looks on a black background.

Color Contrast Check

Large Text (above 18pt) WCAG AA ✓ Pass

Any Text WCAG AA ✓ Pass

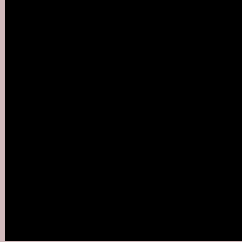
Large Text (above 18pt) WCAG AAA ✓ Pass

Any Text WCAG AAA ✓ Pass

If you want to check with other color combinations, try the [Color Contrast Checker](#).

YUV 193.1050, -2.5168, 13.9399

Background



This preview shows how black text looks on a background with the YUV color 193.1050, -2.5168, 13.9399.



This preview shows how white text looks on a background with the YUV color 193.1050, -2.5168,

Color Blindness Simulation

Color vision deficiency is a very complex topic, and I could not describe the different causes any better than Wikipedia does, so if you want to learn more, you should check out their [article about color blindness](#).

Dichromacy



Original Color

193.1050, -2.5168, 13.9399

Protanopia

192.1960, -0.5896, 2.4591

Deuteranopia

193.1160, -2.5222, 15.6843



Tritanopia

193.4840, 2.7194, 14.4845

Trichromacy



Original Color

193.1050, -2.5168, 13.9399

Protanomaly

192.4030, -1.1847, 6.6626

Deuteranomaly

192.8170, -2.3748, 15.0695

Tritanomaly

193.6150, 0.6828, 14.3696

Monochromacy



Original Color

193.1050, -2.5168, 13.9399

Achromatopsia

193.0000, 0.0000, 0.0000

Achromatomaly

192.8050, -0.8899, 5.4330

CSS Examples

Text

The CSS property to change the color of the text to YUV 193.1050, -2.5168, 13.9399 is called "color". The color property can be set on classes, ids or directly on the HTML element.

This example shows how text in the color `rgb(209, 186, 188)` looks like.

```
.text, #text, p{  
    color:rgb(209, 186, 188)  
}
```

If you want to add a text shadow in that color use the text-shadow property, you can generate a text shadow directly with our [CSS Text Shadow Generator](#).

Here you see how black text with a 4 pixel rgb(209, 186, 188) colored shadow looks like.

```
.shadow{ text-shadow: 4px 4px 2px rgb(209, 186, 188) }
```

Border

The CSS property to change the border of an element to YUV 193.1050, -2.5168, 13.9399 is called "border". The border property can be set on classes, ids or directly on the HTML element.

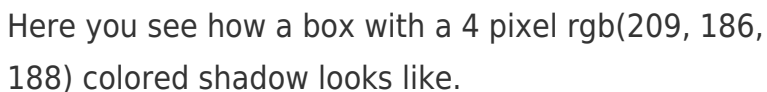
This example shows the color as border, it can be applied via the CSS property "border" or "border-color".

```
.border, #border, table{ border:4px solid rgb(209, 186, 188) }
```


If only the border color should be changed use the property `border-color`.

```
.border{ border-color:rgb(209, 186, 188) }
```

If you want to add a box shadow in that color use:



Here you see how a box with a 4 pixel `rgb(209, 186, 188)` colored shadow looks like.

```
.boxshadow{ -moz-box-shadow:4px 4px 4px  
4px rgb(209, 186, 188); -webkit-box-  
shadow:4px 4px 4px 4px rgb(209, 186, 188);  
box-shadow:4px 4px 4px 4px rgb(209, 186,  
188) }
```

Background

The CSS property to change the background color of an element to YUV 193.1050, -2.5168, 13.9399 is called "background". The background property can be set on classes, ids or directly on the HTML element.

```
.background, #background, body{  
background: rgb(209, 186, 188) }
```

If only the background color should be changed can be used:

```
.background{ background-color: rgb(209,  
186, 188) }
```

This example shows the color as background, it is applied via the CSS property "background".

To optimize and compress your CSS code, you can use our [online CSS compressor and optimizer](#) based on csstidy. If you want to create a linear or radial gradient as background or border, check our [CSS Gradient Generator](#).

Hey! You found this booklet interesting? Support Converting Colors with the new Membership Option!

The pro membership hides all ads, plus gives you double the colors in the color bucket, and more awesome pro features!

[Learn more, Memberships starting at \\$2.50/m!](#)

**Follow me
on Twitter!**

@ConvertingColor