

Converting Colors

YUV(193.4020, -13.0162,
21.5724)

Have a look what the booklet for
YUV(193.4020, -13.0162, 21.5724)
contains.

YUV(193.4020, -13.0162, 21.5724)	3
<i>Conversions</i>	4
<i>Details</i>	6
<i>Harmonies</i>	12
<i>Previews</i>	24
<i>Color Blindness Simulation</i>	28
<i>CSS Examples</i>	31

Color

**YUV(193.4020, -13.0162,
21.5724)**

Conversions

Conversions Part 1

Format	Color
Hex	DABAA7
RGB	218, 186, 167
RGB Percent	85%, 73%, 65%
CMY	0.1451, 0.2706, 0.3451
CMYK	0.00, 0.15, 0.23, 0.15
HSL	22°, 41%, 75%
HSV	22°, 23%, 85%
XYZ	53.4474, 52.8133, 43.9362
YIQ	193.4020, 25.1710, 0.8750

Conversions

Conversions Part 2

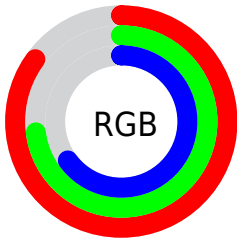
Format	Color
R _Y B	218, 197, 167
Decimal	14334631
CIE Lab	77.76, 8.54, 13.87
CIE LCh	78, 16.290, 58.379
Yxy	52.8133, 0.3558, 0.3516
Android (android.graphics.Color)	4292524711 (0xFFDABAA7)
YUV	193.4020, -13.0162, 21.5724
Hunter-Lab	72.6727, 4.1011, 15.0256

Details

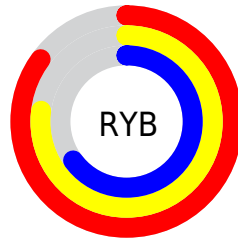
The YUV color $193.4020, -13.0162, 21.5724$ is a light color, and the websafe version is hex FFCCCC . A complement of this color would be $191.5980, 13.0162, -21.5724$, and the grayscale version is $194.0000, 0.0000, 0.0000$.

A 20% lighter version of the original color is $243.6070, -10.6523, 9.9917$, and $139.6190, -12.1372, 19.6281$ is the 20% darker color. If you saturate the color by 10%, you get $182.6760, -18.5743, 30.9791$, and if you desaturate by 10%, it is $204.1280, -7.4581, 12.1657$.

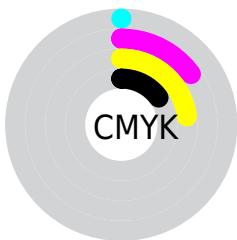
Distribution



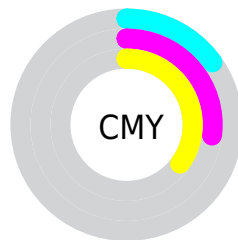
- Red (85%)
- Green (73%)
- Blue (65%)



- Red (85%)
- Yellow (77%)
- Blue (65%)



- Cyan (0%)
- Magenta (15%)
- Yellow (23%)
- Black (15%)



- Cyan (15%)
- Magenta (27%)
- Yellow (35%)

Brightness & Saturation Gradients

These gradients show how the YUV color 193.4020, -13.0162, 21.5724 changes by changing the brightness by 10 percent. The first figure shows a shift by +10% for each color and the second figure -10%.

Similar to the brightness gradients but the following saturation gradients show a change of the YUV color 193.4020, -13.0162, 21.5724 by changing the saturation by 10% instead.

■ 193.4020,
-13.0162, 21.5724

■ 193.4020,
-13.0162, 21.5724

255.0000, 0.0000,
0.0000

■ 166.2170,
-12.4320, 20.8577

■ 243.6070,
-10.6523, 9.9917

■ 139.6190,
-12.1372, 19.6281

■ 254.5440, -1.7472,
0.3999

■ 114.3200,
-11.9898, 19.0134

■ 89.2490, -10.9688,
18.1986

■ 65.7650, -10.2371,
16.8691

■ 43.2810, -9.5055,
15.5396

■ 22.2270, -10.9579,

14.7099

■ 0.0000, 0.0000,
0.0000

■ 193.4020,
-13.0162, 21.5724

■ 193.4020,
-13.0162, 21.5724

■ 182.6760,
-18.5743, 30.9791

■ 204.1280, -7.4581,
12.1657

■ 172.5370,
-24.4217, 39.8711

■ 214.2670, -1.6106,
3.2738

■ 161.9250,
-29.5430, 49.1778

■ 224.8790, 3.5107,
-6.0329

■ 151.1990,
-35.1011, 58.5845

■ 235.6050, 9.0687,
-15.4396

■ 141.0600,
-40.9486, 67.4764

■ 243.3500, 5.7435,
-22.2319

■ 130.3340,
-46.5067, 76.8831

■ 243.9370, 5.4541,
-22.7467

■ 119.6080,
-52.0647, 86.2898

■ 112.7290,
-55.5754, 92.3227

Harmonies

Analogous

The Analogous color harmony consists of three colors that are next to each other on the color wheel.



194.6890, -8.2277, 25.7057



193.4020, -13.0162, 21.5724



191.8800, -14.7308, 11.5062

Triad

The Triadic color harmony groups three colors that are evenly spaced from another and form a triangle on the color wheel.



193.4020, -13.0162, 21.5724



187.0030, 1.9705, -25.4356



193.9150, 12.3669, 0.0745

Complementary

The Complementary color scheme is a pair of colors which are on the opposite of each other on the color wheel.



193.4020, -13.0162, 21.5724



191.5980, 13.0162, -21.5724

Split Complementary

Split-complementary colors differ from the complementary color scheme. The scheme consists of three colors, the original color and two neighbors of the complement color.



191.5110, 15.0311, -14.4801



193.4020, -13.0162, 21.5724



187.2180, 9.2595, -30.0092

Square

The Square scheme is like the rectangle color scheme, but the four colors are evenly spaced on the color wheel.



193.4020, -13.0162, 21.5724



188.0060, -5.9190, -14.9143



188.5050, 14.0480, -25.8759



194.8090, 6.5032, 14.1995

Rectangle

The Rectangle color scheme consists of four colors that form a rectangle on the color wheel.



193.4020, -13.0162, 21.5724



190.5800, -13.1039, 2.9993



188.5050, 14.0480, -25.8759



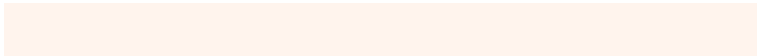
192.9360, 13.8356, -4.3289

Sweetspot

The Sweet Spot groups the original color and five complimentary colors.



193.4020, -13.0162, 21.5724



246.4910, -4.6791, 7.4624



185.8970, 6.4598, 28.1543



122.6370, -2.7790, 4.7034



0.0000, 0.0000, 0.0000



128.0000, 0.0000, 0.0000

Same Dimension

The Same Dimension uses a secret algorithm to generate beautiful new colors.



193.4020, -13.0162, 21.5724



220.4910, -17.9901, 30.2644



208.0770, -20.2510, 8.7025



104.6370, -2.7790, 4.7034



89.8820, -44.3118, 72.8945



23.7330, -11.7004, 19.5282

Inverse Universe

The Inverse Universe completely reimagines the original color for something new.



191.5980, 13.0162, -21.5724



217.9220, 18.2795, -29.7496



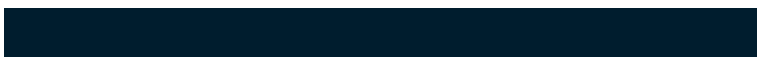
176.9230, 20.2510, -8.7025



104.3630, 2.7790, -4.7034



83.7050, 44.0224, -73.4093



22.2670, 11.7004, -19.5282

Previews

White Background



This preview shows how the YUV color 193.4020, -13.0162, 21.5724 looks on a white background.

Color Contrast Check

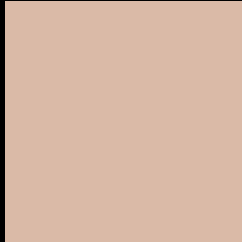
Large Text (above 18pt) WCAG AA × Fail

Any Text WCAG AA × Fail

Large Text (above 18pt) WCAG AAA × Fail

Any Text WCAG AAA × Fail

Black Background



This preview shows how the YUV color 193.4020, -13.0162, 21.5724 looks on a black background.

Color Contrast Check

Large Text (above 18pt) WCAG AA ✓ Pass

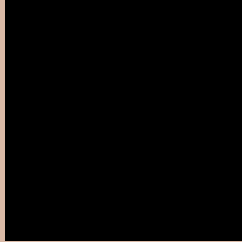
Any Text WCAG AA ✓ Pass

Large Text (above 18pt) WCAG AAA ✓ Pass

Any Text WCAG AAA ✓ Pass

If you want to check with other color combinations, try the [Color Contrast Checker](#).

YUV 193.4020, -13.0162, 21.5724 Background



This preview shows how black text looks on a background with the YUV color 193.4020, -13.0162, 21.5724.



This preview shows how white text looks on a background with the YUV color 193.4020, -13.0162, 21.5724.

21.5724.

Color Blindness Simulation

Color vision deficiency is a very complex topic, and I could not describe the different causes any better than Wikipedia does, so if you want to learn more, you should check out their [article about color blindness](#).

Dichromacy



Original Color

193.4020, -13.0162, 21.5724

Protanopia

192.1830, -10.9362, 7.7325

Deuteranopia

193.4130, -13.0216, 23.3168



Tritanopia

195.2570, 0.3663, 22.5766

Trichromacy



Original Color

193.4020, -13.0162, 21.5724

Protanomaly

192.6890, -11.6787, 12.5507

Deuteranomaly

193.1140, -12.8742, 22.7020

Tritanomaly

194.2910, -4.5805, 22.5468

Monochromacy



Original Color

193.4020, -13.0162, 21.5724

Achromatopsia

193.0000, 0.0000, 0.0000

Achromatomaly

192.9040, -4.3897, 7.9772

CSS Examples

Text

The CSS property to change the color of the text to YUV 193.4020, -13.0162, 21.5724 is called "color". The color property can be set on classes, ids or directly on the HTML element.

This example shows how text in the color `rgb(218, 186, 167)` looks like.

```
.text, #text, p{  
    color:rgb(218, 186, 167)  
}
```

If you want to add a text shadow in that color use the text-shadow property, you can generate a text shadow directly with our [CSS Text Shadow Generator](#).

Here you see how black text with a 4 pixel rgb(218, 186, 167) colored shadow looks like.

```
.shadow{ text-shadow: 4px 4px 2px rgb(218, 186, 167) }
```

Border

The CSS property to change the border of an element to YUV 193.4020, -13.0162, 21.5724 is called "border".

The border property can be set on classes, ids or directly on the HTML element.

This example shows the color as border, it can be applied via the CSS property "border" or "border-color".

```
.border, #border, table{ border:4px solid rgb(218, 186, 167) }
```


If only the border color should be changed use the property `border-color`.

```
.border{ border-color:rgb(218, 186, 167) }
```

If you want to add a box shadow in that color use:

Here you see how a box with a 4 pixel `rgb(218, 186, 167)` colored shadow looks like.

```
.boxshadow{ -moz-box-shadow:4px 4px 4px  
4px rgb(218, 186, 167); -webkit-box-  
shadow:4px 4px 4px 4px rgb(218, 186, 167);  
box-shadow:4px 4px 4px 4px rgb(218, 186,  
167) }
```

Background

The CSS property to change the background color of an element to YUV 193.4020, -13.0162, 21.5724 is called "background". The background property can be set on classes, ids or directly on the HTML element.

```
.background, #background, body{  
background: rgb(218, 186, 167) }
```

If only the background color should be changed can be used:

```
.background{ background-color: rgb(218,  
186, 167) }
```

This example shows the color as background, it is applied via the CSS property "background".

To optimize and compress your CSS code, you can use our [online CSS compressor and optimizer](#) based on csstidy. If you want to create a linear or radial gradient as background or border, check our [CSS Gradient Generator](#).

Hey! You found this booklet interesting? Support Converting Colors with the new Membership Option!

The pro membership hides all ads, plus gives you double the colors in the color bucket, and more awesome pro features!

[Learn more, Memberships starting at \\$2.50/m!](#)

**Follow me
on Twitter!**

@ConvertingColor