

# Converting Colors

YUV(193.7000, -11.6841,  
14.2951)

Have a look what the booklet for  
YUV(193.7000, -11.6841, 14.2951)  
contains.

<b>YUV(193.7000, -11.6841, 14.2951)</b> .....	3
<b><i>Conversions</i></b> .....	4
<b><i>Details</i></b> .....	6
<b><i>Harmonies</i></b> .....	12
<b><i>Previews</i></b> .....	24
<b><i>Color Blindness Simulation</i></b> .....	28
<b><i>CSS Examples</i></b> .....	31

# Color

**YUV(193.7000, -11.6841,  
14.2951)**

# Conversions

## Conversions Part 1

Format	Color
Hex	D2BEAA
RGB	210, 190, 170
RGB Percent	82%, 75%, 67%
CMY	0.1765, 0.2549, 0.3333
CMYK	0.00, 0.10, 0.19, 0.18
HSL	30°, 31%, 75%
HSV	30°, 19%, 82%
XYZ	52.2475, 53.4308, 45.5897
YIQ	193.7000, 18.3400, -1.9800

# Conversions

## Conversions Part 2

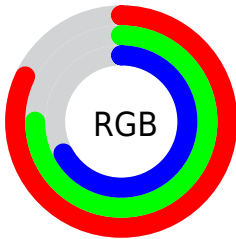
Format	Color
<a href="#">RYB</a>	<a href="#">210, 210, 170</a>
Decimal	<a href="#">13811370</a>
CIELab	<a href="#">78.13, 3.86, 12.67</a>
CIELCh	<a href="#">78, 13.243, 73.055</a>
Yxy	<a href="#">53.4308, 0.3454, 0.3532</a>
Android (android.graphics.Color)	<a href="#">4292001450</a> ( <a href="#">0xFFD2BEAA</a> )
YUV	<a href="#">193.7000, -11.6841, 14.2951</a>
Hunter-Lab	<a href="#">73.0964, -0.3313, 14.1888</a>

# Details

The YUV color  $193.7000, -11.6841, 14.2951$  is a light color, and the websafe version is hex `CCCCCC`. A complement of this color would be  $186.3000, 11.6841, -14.2951$ , and the grayscale version is  $194.0000, 0.0000, 0.0000$ .

A 20% lighter version of the original color is  $246.2970, -10.4994, 7.6325$ , and  $140.2160, -10.9525, 12.9656$  is the 20% darker color. If you saturate the color by 10%, you get  $185.4360, -17.9629, 21.5426$ , and if you desaturate by 10%, it is  $202.5510, -5.6946, 6.5328$ .

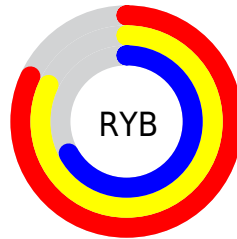
# Distribution



Red (82%)

Green (75%)

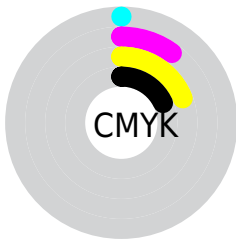
Blue (67%)



Red (82%)

Yellow (82%)

Blue (67%)

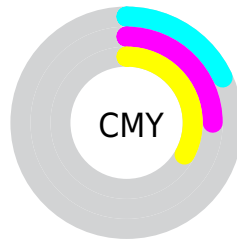


Cyan (0%)

Magenta (10%)

Yellow (19%)

Black (18%)



Cyan (18%)

Magenta (25%)

Yellow (33%)

# Brightness & Saturation Gradients

These gradients show how the YUV color 193.7000, -11.6841, 14.2951 changes by changing the brightness by 10 percent. The first figure shows a shift by +10% for each color and the second figure -10%.

Similar to the brightness gradients but the following saturation gradients show a change of the YUV color 193.7000, -11.6841, 14.2951 by changing the saturation by 10% instead.



■ 193.7000,  
-11.6841, 14.2951

■ 193.7000,  
-11.6841, 14.2951

255.0000, 0.0000,  
0.0000

■ 166.5150,  
-11.0999, 13.5803

■ 246.2970,  
-10.4994, 7.6325

■ 140.2160,  
-10.9525, 12.9656

254.8860, -0.4368,  
0.1000

■ 114.3300,  
-10.5157, 12.8656

■ 89.8460, -9.7841,  
11.5361

■ 66.5470, -9.6367,  
10.9213

■ 44.3620, -9.0525,  
10.2065

■ 22.7920, -11.2365,

10.7064

■ 0.0000, 0.0000,  
0.0000

■ 193.7000,  
-11.6841, 14.2951

■ 193.7000,  
-11.6841, 14.2951

■ 185.4360,  
-17.9629, 21.5426

■ 202.5510, -5.6946,  
6.5328

■ 176.5850,  
-23.9524, 29.3050

■ 210.8150, 0.5842,  
-0.7148

■ 168.3210,  
-30.2313, 36.5525

■ 219.6660, 6.5737,  
-8.4771

■ 159.4700,  
-36.2207, 44.3148

■ 227.9300, 12.8525,  
-15.7246

■ 151.2060,  
-42.4996, 51.5623

■ 233.9140, 10.3954,  
-20.9726

■ 142.3550,  
-48.4890, 59.3247

■ 240.3710, 7.2121,  
-26.6354

■ 134.0910,  
-54.7679, 66.5722

■ 241.5450, 6.6333,  
-27.6650

■ 125.2400,  
-60.7573, 74.3345

■ 124.4250,  
-61.3415, 75.0493

# Harmonies

## Analogous

The Analogous color harmony consists of three colors that are next to each other on the color wheel.



195.1290, -8.9376, 20.0579



193.7000, -11.6841, 14.2951



192.3460, -11.5096, 4.9586

# Triad

The Triadic color harmony groups three colors that are evenly spaced from another and form a triangle on the color wheel.



193.7000, -11.6841, 14.2951



189.2960, 4.2911, -23.0616



194.8080, 7.9827, 6.3074

# Complementary

The Complementary color scheme is a pair of colors which are on the opposite of each other on the color wheel.



193.7000, -11.6841, 14.2951



186.3000, 11.6841, -14.2951

# Split Complementary

Split-complementary colors differ from the complementary color scheme. The scheme consists of three colors, the original color and two neighbors of the complement color.



193.3550, 11.6570, -5.5733



193.7000, -11.6841, 14.2951



189.3760, 9.6746, -23.1318

# Square

The Square scheme is like the rectangle color scheme, but the four colors are evenly spaced on the color wheel.



193.7000, -11.6841, 14.2951



189.7330, -1.8404, -16.4288



191.1040, 12.2737, -16.7542



196.0820, 2.4246, 15.7141



# Rectangle

The Rectangle color scheme consists of four colors that form a rectangle on the color wheel.



193.7000, -11.6841, 14.2951



191.4590, -9.5933, -3.0335



191.1040, 12.2737, -16.7542



194.8290, 9.4513, 1.9040

# Sweetspot

The Sweet Spot groups the original color and five complimentary colors.



193.7000, -11.6841, 14.2951



248.5940, -4.2368, 5.6181



184.2400, 2.8397, 22.5915



124.0390, -2.4842, 3.4738



0.0000, 0.0000, 0.0000



128.0000, 0.0000, 0.0000



# Same Dimension

The Same Dimension uses a secret algorithm to generate beautiful new colors.



193.7000, -11.6841, 14.2951



231.2510, -17.3787, 20.8279



205.4400, -17.4719, 3.9991



100.2240, -3.0684, 4.1886



99.5400, -49.0732, 60.0394



23.9990, -11.8315, 14.9099



# Inverse Universe

The Inverse Universe completely reimagines the original color for something new.



186.3000, 11.6841, -14.2951



220.3360, 17.0894, -21.3427



174.5600, 17.4719, -3.9991



98.1890, 3.3578, -3.6738



68.4600, 49.0732, -60.0394

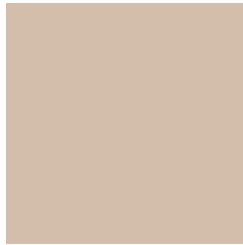


16.4140, 12.1209, -14.3951



# Previews

## White Background



This preview shows how the YUV color 193.7000, -11.6841, 14.2951 looks on a white background.

## Color Contrast Check

Large Text (above 18pt) WCAG AA × Fail

Any Text WCAG AA × Fail

Large Text (above 18pt) WCAG AAA × Fail

Any Text WCAG AAA × Fail



# Black Background



This preview shows how the YUV color 193.7000, -11.6841, 14.2951 looks on a black background.

## Color Contrast Check

Large Text (above 18pt) WCAG AA ✓ Pass

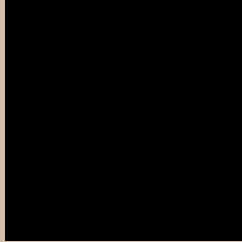
Any Text WCAG AA ✓ Pass

Large Text (above 18pt) WCAG AAA ✓ Pass

Any Text WCAG AAA ✓ Pass

If you want to check with other color combinations, try the [Color Contrast Checker](#).

# YUV 193.7000, -11.6841, 14.2951 Background



This preview shows how black text looks on a background with the YUV color 193.7000, -11.6841, 14.2951.



This preview shows how white text looks on a background with the YUV color 193.7000, -11.6841, 14.2951.



# Color Blindness Simulation

Color vision deficiency is a very complex topic, and I could not describe the different causes any better than Wikipedia does, so if you want to learn more, you should check out their [article about color blindness](#).

## Dichromacy



### Original Color

193.7000, -11.6841, 14.2951

### Protanopia

193.1830, -10.9362, 7.7325

### Deuteranopia

194.4560, -11.5638, 22.4021



## Tritanopia

195.9680, 1.9878, 15.8141

# Trichromacy



## Original Color

193.7000, -11.6841, 14.2951

## Protanomaly

193.4930, -11.0890, 10.0916

## Deuteranomaly

193.8470, -11.2636, 19.4282

## Tritanomaly

195.0020, -2.9590, 15.7842

# Monochromacy



## Original Color

193.7000, -11.6841, 14.2951

## Achromatopsia

194.0000, 0.0000, 0.0000

## Achromatomaly

194.1810, -4.5262, 5.1033

# CSS Examples

## Text

The CSS property to change the color of the text to YUV 193.7000, -11.6841, 14.2951 is called "color". The color property can be set on classes, ids or directly on the HTML element.

This example shows how text in the color `rgb(210, 190, 170)` looks like.

```
.text, #text, p{  
    color:rgb(210, 190, 170)  
}
```

If you want to add a text shadow in that color use the text-shadow property, you can generate a text shadow directly with our [CSS Text Shadow Generator](#).

Here you see how black text with a 4 pixel rgb(210, 190, 170) colored shadow looks like.

```
.shadow{ text-shadow: 4px 4px 2px rgb(210, 190, 170) }
```

## Border

The CSS property to change the border of an element to YUV 193.7000, -11.6841, 14.2951 is called "border".

The border property can be set on classes, ids or directly on the HTML element.

This example shows the color as border, it can be applied via the CSS property "border" or "border-color".

```
.border, #border, table{ border:4px solid rgb(210, 190, 170) }
```



If only the border color should be changed use the property `border-color`.

```
.border{ border-color:rgb(210, 190, 170) }
```

If you want to add a box shadow in that color use:

Here you see how a box with a 4 pixel `rgb(210, 190, 170)` colored shadow looks like.

```
.boxshadow{ -moz-box-shadow:4px 4px 4px  
4px rgb(210, 190, 170); -webkit-box-  
shadow:4px 4px 4px 4px rgb(210, 190, 170);  
box-shadow:4px 4px 4px 4px rgb(210, 190,  
170) }
```

# Background

The CSS property to change the background color of an element to YUV 193.7000, -11.6841, 14.2951 is called "background". The background property can be set on classes, ids or directly on the HTML element.

```
.background, #background, body{  
background: rgb(210, 190, 170) }
```

If only the background color should be changed can be used:

```
.background{ background-color: rgb(210,  
190, 170) }
```

This example shows the color as background, it is applied via the CSS property "background".

To optimize and compress your CSS code, you can use our [online CSS compressor and optimizer](#) based on csstidy. If you want to create a linear or radial gradient as background or border, check our [CSS Gradient Generator](#).

Hey! You found this booklet interesting? Support Converting Colors with the new Membership Option!

The pro membership hides all ads, plus gives you double the colors in the color bucket, and more awesome pro features!

**[Learn more, Memberships starting at \\$2.50/m!](#)**

**Follow me  
on Twitter!**

@ConvertingColor