

Converting Colors

YUV(193.9420, -18.7054,
26.3609)

Have a look what the booklet for
YUV(193.9420, -18.7054, 26.3609)
contains.

YUV(193.9420, -18.7054, 26.3609)	3
<i>Conversions</i>	4
<i>Details</i>	6
<i>Harmonies</i>	12
<i>Previews</i>	24
<i>Color Blindness Simulation</i>	28
<i>CSS Examples</i>	31

Color

**YUV(193.9420, -18.7054,
26.3609)**

Conversions

Conversions Part 1

Format	Color
Hex	E0BA9C
RGB	224, 186, 156
RGB Percent	88%, 73%, 61%
CMY	0.1216, 0.2706, 0.3882
CMYK	0.00, 0.17, 0.30, 0.12
HSL	26°, 52%, 75%
HSV	26°, 30%, 88%
XYZ	54.3001, 53.3654, 38.8911
YIQ	193.9420, 32.2780, -1.2740

Conversions

Conversions Part 2

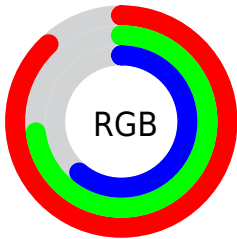
Format	Color
R_{YB}	224, 210, 156
Decimal	14727836
CIE Lab	78.09, 9.32, 20.32
CIE LCh	78, 22.356, 65.362
Yxy	53.3654, 0.3705, 0.3641
Android (android.graphics.Color)	4292917916 (0xFFE0BA9C)
YUV	193.9420, -18.7054, 26.3609
Hunter-Lab	73.0516, 4.8408, 19.5714

Details

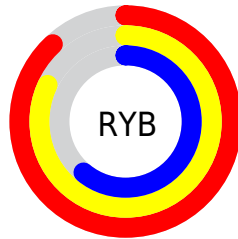
The YUV color $193.9420, -18.7054, 26.3609$ is a light color, and the websafe version is hex FFCC99 . A complement of this color would be $186.0580, 18.7054, -26.3609$, and the grayscale version is $194.0000, 0.0000, 0.0000$.

A 20% lighter version of the original color is $242.3530, -15.4570, 11.0914$, and $140.2730, -17.3896, 24.3166$ is the 20% darker color. If you saturate the color by 10%, you get $183.8030, -24.5529, 35.2528$, and if you desaturate by 10%, it is $204.0810, -12.8579, 17.4690$.

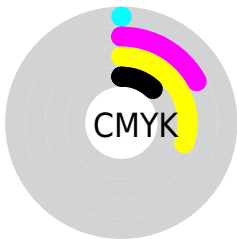
Distribution



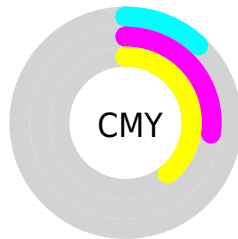
- Red (88%)
- Green (73%)
- Blue (61%)



- Red (88%)
- Yellow (82%)
- Blue (61%)



- Cyan (0%)
- Magenta (17%)
- Yellow (30%)
- Black (12%)



- Cyan (12%)
- Magenta (27%)
- Yellow (39%)

Brightness & Saturation Gradients

These gradients show how the YUV color 193.9420, -18.7054, 26.3609 changes by changing the brightness by 10 percent. The first figure shows a shift by +10% for each color and the second figure -10%.

Similar to the brightness gradients but the following saturation gradients show a change of the YUV color 193.9420, -18.7054, 26.3609 by changing the saturation by 10% instead.

■ 193.9420,
-18.7054, 26.3609

■ 193.9420,
-18.7054, 26.3609

255.0000, 0.0000,
0.0000

■ 166.7570,
-18.1212, 25.6461

■ 242.3530,
-15.4570, 11.0914

■ 140.2730,
-17.3896, 24.3166

■ 253.1760, -6.9888,
1.5996

■ 114.6750,
-17.0948, 23.0870

■ 89.3050, -15.9264,
21.6575

■ 65.8210, -15.1948,
20.3280

■ 43.0380, -14.3157,
18.3837

■ 22.8250, -11.2527,

15.9395

■ 0.8970, -0.4422,
1.8443

■ 0.0000, 0.0000,
0.0000

■ 193.9420,
-18.7054, 26.3609

■ 193.9420,
-18.7054, 26.3609

■ 183.8030,
-24.5529, 35.2528

■ 204.0810,
-12.8579, 17.4690

■ 174.1370,
-31.1265, 43.7299

■ 213.7470, -6.2843,
8.9919

■ 163.9980,
-36.9740, 52.6218

■ 223.8860, -0.4368,
0.1000

■ 154.3320,
-43.5477, 61.0988

■ 233.5520, 6.1369,
-8.3771

■ 144.1930,
-49.3951, 69.9907

■ 242.2090, 6.3060,
-15.9693

■ 134.6410,
-55.5320, 78.3678

■ 245.7310, 4.5696,
-19.0581

■ 125.0890,
-61.6689, 86.7449

Harmonies

Analogous

The Analogous color harmony consists of three colors that are next to each other on the color wheel.



195.3050, -12.4754, 34.8125



193.9420, -18.7054, 26.3609



191.9140, -19.6776, 11.4764

Triad

The Triadic color harmony groups three colors that are evenly spaced from another and form a triangle on the color wheel.



193.9420, -18.7054, 26.3609



184.8380, 5.5029, -38.4459



195.7460, 15.4082, 4.6078

Complementary

The Complementary color scheme is a pair of colors which are on the opposite of each other on the color wheel.



193.9420, -18.7054, 26.3609



186.0580, 18.7054, -26.3609

Split Complementary

Split-complementary colors differ from the complementary color scheme. The scheme consists of three colors, the original color and two neighbors of the complement color.



192.5800, 20.4201, -16.2947



193.9420, -18.7054, 26.3609



185.0360, 15.2653, -43.0046

Square

The Square scheme is like the rectangle color scheme, but the four colors are evenly spaced on the color wheel.



193.9420, -18.7054, 26.3609



186.6520, -5.7444, -24.2508



188.1710, 20.6217, -34.3530



196.9780, 6.9128, 22.8213

Rectangle

The Rectangle color scheme consists of four colors that form a rectangle on the color wheel.



193.9420, -18.7054, 26.3609



190.1190, -17.3137, -0.1044



188.1710, 20.6217, -34.3530



194.8700, 17.3191, -1.6400

Sweetspot

The Sweet Spot groups the original color and five complimentary colors.



193.9420, -18.7054, 26.3609



244.7470, -6.2843, 8.9919



180.7780, 7.0114, 37.9057



121.5940, -4.2368, 5.6181



0.0000, 0.0000, 0.0000



128.0000, 0.0000, 0.0000

Same Dimension

The Same Dimension uses a secret algorithm to generate beautiful new colors.



193.9420, -18.7054, 26.3609



214.5750, -25.4265, 35.4527



213.3130, -28.2553, 9.3725



107.2240, -3.0684, 4.1886



98.4100, -48.5161, 68.0464



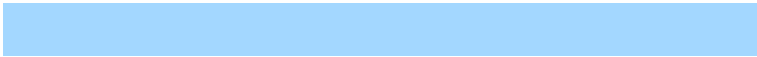
26.6790, -13.1527, 18.6985

Inverse Universe

The Inverse Universe completely reimagines the original color for something new.



186.0580, 18.7054, -26.3609



204.0120, 25.1371, -35.9675



166.6870, 28.2553, -9.3725



105.7760, 3.0684, -4.1886



77.5900, 48.5161, -68.0464



21.3210, 13.1527, -18.6985

Previews

White Background



This preview shows how the YUV color 193.9420, -18.7054, 26.3609 looks on a white background.

Color Contrast Check

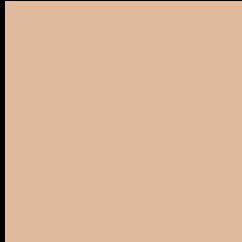
Large Text (above 18pt) WCAG AA × Fail

Any Text WCAG AA × Fail

Large Text (above 18pt) WCAG AAA × Fail

Any Text WCAG AAA × Fail

Black Background



This preview shows how the YUV color 193.9420, -18.7054, 26.3609 looks on a black background.

Color Contrast Check

Large Text (above 18pt) WCAG AA ✓ Pass

Any Text WCAG AA ✓ Pass

Large Text (above 18pt) WCAG AAA ✓ Pass

Any Text WCAG AAA ✓ Pass

If you want to check with other color combinations, try the [Color Contrast Checker](#).

YUV 193.9420, -18.7054, 26.3609

Background



This preview shows how black text looks on a background with the YUV color 193.9420, -18.7054, 26.3609.



This preview shows how white text looks on a background with the YUV color 193.9420, -18.7054,

Color Blindness Simulation

Color vision deficiency is a very complex topic, and I could not describe the different causes any better than Wikipedia does, so if you want to learn more, you should check out their [article about color blindness](#).

Dichromacy



Original Color

193.9420, -18.7054, 26.3609

Protanopia

192.4130, -16.4726, 10.1618

Deuteranopia

194.2410, -18.8528, 26.9756



Tritanopia

196.6490, -0.8130, 27.4948

Trichromacy



Original Color

193.9420, -18.7054, 26.3609

Protanomaly

192.6310, -17.0731, 16.1096

Deuteranomaly

194.2410, -18.8528, 26.9756

Tritanomaly

195.9280, -7.3595, 27.2501

Monochromacy



Original Color

193.9420, -18.7054, 26.3609

Achromatopsia

194.0000, 0.0000, 0.0000

Achromatomaly

193.9320, -6.8685, 9.7066

CSS Examples

Text

The CSS property to change the color of the text to YUV 193.9420, -18.7054, 26.3609 is called "color". The color property can be set on classes, ids or directly on the HTML element.

This example shows how text in the color `rgb(224, 186, 156)` looks like.

```
.text, #text, p{  
    color:rgb(224, 186, 156)  
}
```

If you want to add a text shadow in that color use the text-shadow property, you can generate a text shadow directly with our [CSS Text Shadow Generator](#).

Here you see how black text with a 4 pixel rgb(224, 186, 156) colored shadow looks like.

```
.shadow{ text-shadow: 4px 4px 2px rgb(224, 186, 156) }
```

Border

The CSS property to change the border of an element to YUV 193.9420, -18.7054, 26.3609 is called "border".

The border property can be set on classes, ids or directly on the HTML element.

This example shows the color as border, it can be applied via the CSS property "border" or "border-color".

```
.border, #border, table{ border:4px solid rgb(224, 186, 156) }
```


If only the border color should be changed use the property `border-color`.

```
.border{ border-color:rgb(224, 186, 156) }
```

If you want to add a box shadow in that color use:

Here you see how a box with a 4 pixel `rgb(224, 186, 156)` colored shadow looks like.

```
.boxshadow{ -moz-box-shadow:4px 4px 4px 4px rgb(224, 186, 156); -webkit-box-shadow:4px 4px 4px 4px rgb(224, 186, 156); box-shadow:4px 4px 4px 4px rgb(224, 186, 156) }
```

Background

The CSS property to change the background color of an element to YUV 193.9420, -18.7054, 26.3609 is called "background". The background property can be set on classes, ids or directly on the HTML element.

```
.background, #background, body{  
background: rgb(224, 186, 156) }
```

If only the background color should be changed can be used:

```
.background{ background-color: rgb(224,  
186, 156) }
```

This example shows the color as background, it is applied via the CSS property "background".

To optimize and compress your CSS code, you can use our [online CSS compressor and optimizer](#) based on csstidy. If you want to create a linear or radial gradient as background or border, check our [CSS Gradient Generator](#).

Hey! You found this booklet interesting? Support Converting Colors with the new Membership Option!

The pro membership hides all ads, plus gives you double the colors in the color bucket, and more awesome pro features!

[Learn more, Memberships starting at \\$2.50/m!](#)

**Follow me
on Twitter!**

@ConvertingColor