

Converting Colors

YUV(194.0130, -19.7264,
27.1756)

Have a look what the booklet for
YUV(194.0130, -19.7264, 27.1756)
contains.

YUV(194.0130, -19.7264, 27.1756)	3
<i>Conversions</i>	4
<i>Details</i>	6
<i>Harmonies</i>	12
<i>Previews</i>	24
<i>Color Blindness Simulation</i>	28
<i>CSS Examples</i>	31

Color

**YUV(194.0130, -19.7264,
27.1756)**

Conversions

Conversions Part 1

Format	Color
Hex	E1BA9A
RGB	225, 186, 154
RGB Percent	88%, 73%, 60%
CMY	0.1176, 0.2706, 0.3961
CMYK	0.00, 0.17, 0.32, 0.12
HSL	27°, 54%, 74%
HSV	27°, 32%, 88%
XYZ	54.4430, 53.4585, 38.0209
YIQ	194.0130, 33.5160, -1.6840

Conversions

Conversions Part 2

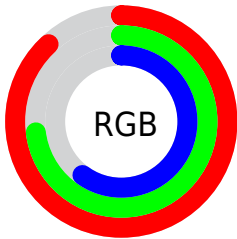
Format	Color
RYB	225, 212, 154
Decimal	14793370
CIELab	78.14, 9.45, 21.48
CIELCh	78, 23.468, 66.259
Yxy	53.4585, 0.3731, 0.3663
Android (android.graphics.Color)	4292983450 (0xFFE1BA9A)
YUV	194.0130, -19.7264, 27.1756
Hunter-Lab	73.1153, 4.9626, 20.3491

Details

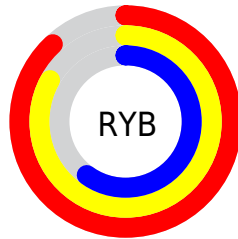
The YUV color **194.0130, -19.7264, 27.1756** is a light color, and the websafe version is hex **FFCC99**. A complement of this color would be **184.9870, 19.7264, -27.1756**, and the grayscale version is **194.0000, 0.0000, 0.0000**.

A 20% lighter version of the original color is **242.1250, -16.3306, 11.2914**, and **140.3440, -18.4106, 25.1313** is the 20% darker color. If you saturate the color by 10%, you get **184.4610, -25.8633, 35.5527**, and if you desaturate by 10%, it is **203.6790, -13.1527, 18.6985**.

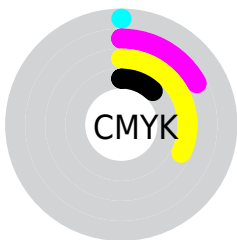
Distribution



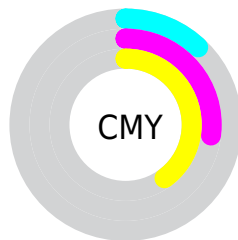
- Red (88%)
- Green (73%)
- Blue (60%)



- Red (88%)
- Yellow (83%)
- Blue (60%)



- Cyan (0%)
- Magenta (17%)
- Yellow (32%)
- Black (12%)



- Cyan (12%)
- Magenta (27%)
- Yellow (40%)

Brightness & Saturation Gradients

These gradients show how the YUV color 194.0130, -19.7264, 27.1756 changes by changing the brightness by 10 percent. The first figure shows a shift by +10% for each color and the second figure -10%.

Similar to the brightness gradients but the following saturation gradients show a change of the YUV color 194.0130, -19.7264, 27.1756 by changing the saturation by 10% instead.

■ 194.0130,
-19.7264, 27.1756

■ 194.0130,
-19.7264, 27.1756

255.0000, 0.0000,
0.0000

■ 166.5290,
-18.9948, 25.8461

■ 242.1250,
-16.3306, 11.2914

■ 140.3440,
-18.4106, 25.1313

■ 252.9480, -7.8624,
1.7996

■ 114.5610,
-17.5316, 23.1870

■ 89.3760, -16.9474,
22.4722

■ 65.5930, -16.0683,
20.5279

■ 42.8100, -15.1893,
18.5836

■ 22.8250, -11.2527,

15.9395

■ 1.1960, -0.5896,
2.4591

■ 0.0000, 0.0000,
0.0000

■ 194.0130,
-19.7264, 27.1756

■ 194.0130,
-19.7264, 27.1756

■ 184.4610,
-25.8633, 35.5527

■ 203.6790,
-13.1527, 18.6985

■ 174.2080,
-32.1475, 44.5446

■ 213.8180, -7.3053,
9.8066

■ 164.6560,
-38.2844, 52.9217

■ 223.4840, -0.7316,
1.3295

■ 154.9900,
-44.8581, 61.3988

■ 233.0360, 5.4053,
-7.0476

■ 144.7370,
-51.1423, 70.3907

■ 241.9210, 6.4479,
-14.8397

■ 135.1850,
-57.2792, 78.7678

■ 246.0300, 4.4222,
-18.4433

■ 126.5620,
-62.3951, 86.3301

Harmonies

Analogous

The Analogous color harmony consists of three colors that are next to each other on the color wheel.



195.6750, -13.6438, 36.2420



194.0130, -19.7264, 27.1756



191.6860, -20.5512, 11.6764

Triad

The Triadic color harmony groups three colors that are evenly spaced from another and form a triangle on the color wheel.



194.0130, -19.7264, 27.1756



184.6420, 6.0925, -40.9050



195.8710, 15.8396, 6.2521

Complementary

The Complementary color scheme is a pair of colors which are on the opposite of each other on the color wheel.



194.0130, -19.7264, 27.1756



184.9870, 19.7264, -27.1756

Split Complementary

Split-complementary colors differ from the complementary color scheme. The scheme consists of three colors, the original color and two neighbors of the complement color.



192.8080, 21.2937, -16.4946



194.0130, -19.7264, 27.1756



184.3670, 16.5811, -45.0489

Square

The Square scheme is like the rectangle color scheme, but the four colors are evenly spaced on the color wheel.



194.0130, -19.7264, 27.1756



186.3420, -5.5916, -26.6099



187.8010, 21.7901, -35.7825



196.9890, 6.9074, 24.5656

Rectangle

The Rectangle color scheme consists of four colors that form a rectangle on the color wheel.



194.0130, -19.7264, 27.1756



190.2930, -17.8924, -1.1340



187.8010, 21.7901, -35.7825



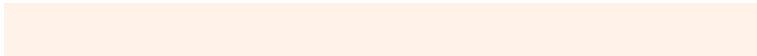
195.0980, 18.1927, -1.8399

Sweetspot

The Sweet Spot groups the original color and five complimentary colors.



194.0130, -19.7264, 27.1756



244.7470, -6.2843, 8.9919



179.6750, 6.5692, 39.7500



121.5940, -4.2368, 5.6181



0.0000, 0.0000, 0.0000



128.0000, 0.0000, 0.0000

Same Dimension

The Same Dimension uses a secret algorithm to generate beautiful new colors.



194.0130, -19.7264, 27.1756



212.8310, -27.0317, 36.9822



214.5580, -29.8551, 9.1576



107.2240, -3.0684, 4.1886



98.9970, -48.8055, 67.5316



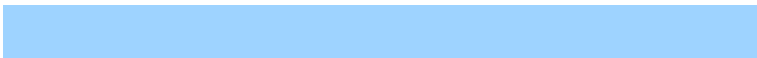
27.2660, -13.4421, 18.1837

Inverse Universe

The Inverse Universe completely reimagines the original color for something new.



184.9870, 19.7264, -27.1756



200.1690, 27.0317, -36.9822



164.4420, 29.8551, -9.1576



105.7760, 3.0684, -4.1886



77.0030, 48.8055, -67.5316



21.3210, 13.1527, -18.6985

Previews

White Background



This preview shows how the YUV color 194.0130, -19.7264, 27.1756 looks on a white background.

Color Contrast Check

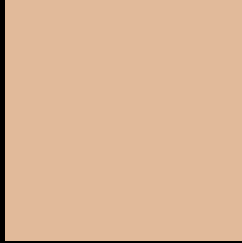
Large Text (above 18pt) WCAG AA × Fail

Any Text WCAG AA × Fail

Large Text (above 18pt) WCAG AAA × Fail

Any Text WCAG AAA × Fail

Black Background



This preview shows how the YUV color 194.0130, -19.7264, 27.1756 looks on a black background.

Color Contrast Check

Large Text (above 18pt) WCAG AA ✓ Pass

Any Text WCAG AA ✓ Pass

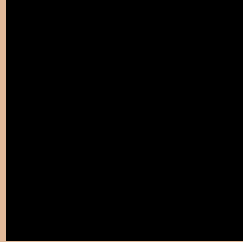
Large Text (above 18pt) WCAG AAA ✓ Pass

Any Text WCAG AAA ✓ Pass

If you want to check with other color combinations, try the [Color Contrast Checker](#).

YUV 194.0130, -19.7264, 27.1756

Background



This preview shows how black text looks on a background with the YUV color 194.0130, -19.7264, 27.1756.



This preview shows how white text looks on a background with the YUV color 194.0130, -19.7264, 27.1756.

Color Blindness Simulation

Color vision deficiency is a very complex topic, and I could not describe the different causes any better than Wikipedia does, so if you want to learn more, you should check out their [article about color blindness](#).

Dichromacy



Original Color

194.0130, -19.7264, 27.1756

Protanopia

192.4840, -17.4936, 10.9765

Deuteranopia

194.3120, -19.8738, 27.7904



Tritanopia

196.2470, -1.1078, 28.7244

Trichromacy



Original Color

194.0130, -19.7264, 27.1756

Protanomaly

192.7020, -18.0941, 16.9243

Deuteranomaly

194.3120, -19.8738, 27.7904

Tritanomaly

195.4120, -8.0911, 28.5797

Monochromacy



Original Color

194.0130, -19.7264, 27.1756

Achromatopsia

194.0000, 0.0000, 0.0000

Achromatomaly

193.8180, -7.3053, 9.8066

CSS Examples

Text

The CSS property to change the color of the text to YUV 194.0130, -19.7264, 27.1756 is called "color". The color property can be set on classes, ids or directly on the HTML element.

This example shows how text in the color `rgb(225, 186, 154)` looks like.

```
.text, #text, p{  
    color:rgb(225, 186, 154)  
}
```

If you want to add a text shadow in that color use the text-shadow property, you can generate a text shadow directly with our [CSS Text Shadow Generator](#).

Here you see how black text with a 4 pixel rgb(225, 186, 154) colored shadow looks like.

```
.shadow{ text-shadow: 4px 4px 2px rgb(225, 186, 154) }
```

Border

The CSS property to change the border of an element to YUV 194.0130, -19.7264, 27.1756 is called "border".

The border property can be set on classes, ids or directly on the HTML element.

This example shows the color as border, it can be applied via the CSS property "border" or "border-color".

```
.border, #border, table{ border:4px solid rgb(225, 186, 154) }
```


If only the border color should be changed use the property `border-color`.

```
.border{ border-color:rgb(225, 186, 154) }
```

If you want to add a box shadow in that color use:

Here you see how a box with a 4 pixel `rgb(225, 186, 154)` colored shadow looks like.

```
.boxshadow{ -moz-box-shadow:4px 4px 4px  
4px rgb(225, 186, 154); -webkit-box-  
shadow:4px 4px 4px 4px rgb(225, 186, 154);  
box-shadow:4px 4px 4px 4px rgb(225, 186,  
154) }
```

Background

The CSS property to change the background color of an element to YUV 194.0130, -19.7264, 27.1756 is called "background". The background property can be set on classes, ids or directly on the HTML element.

```
.background, #background, body{  
background: rgb(225, 186, 154) }
```

If only the background color should be changed can be used:

```
.background{ background-color: rgb(225,  
186, 154) }
```

This example shows the color as background, it is applied via the CSS property "background".

To optimize and compress your CSS code, you can use our [online CSS compressor and optimizer](#) based on csstidy. If you want to create a linear or radial gradient as background or border, check our [CSS Gradient Generator](#).

Hey! You found this booklet interesting? Support Converting Colors with the new Membership Option!

The pro membership hides all ads, plus gives you double the colors in the color bucket, and more awesome pro features!

[Learn more, Memberships starting at \\$2.50/m!](#)

**Follow me
on Twitter!**

@ConvertingColor