

Converting Colors

YUV(194.0510, -3.9691,
13.1103)

Have a look what the booklet for
YUV(194.0510, -3.9691, 13.1103)
contains.

YUV(194.0510, -3.9691, 13.1103)	3
<i>Conversions</i>	4
<i>Details</i>	6
<i>Harmonies</i>	12
<i>Previews</i>	24
<i>Color Blindness Simulation</i>	28
<i>CSS Examples</i>	31

Color

**YUV(194.0510, -3.9691,
13.1103)**

Conversions

Conversions Part 1

Format	Color
Hex	D1BCBA
RGB	209, 188, 186
RGB Percent	82%, 74%, 73%
CMY	0.1804, 0.2627, 0.2706
CMYK	0.00, 0.10, 0.11, 0.18
HSL	5°, 20%, 77%
HSV	5°, 11%, 82%
XYZ	53.1406, 53.0669, 53.8965
YIQ	194.0510, 13.1580, 3.8300

Conversions

Conversions Part 2

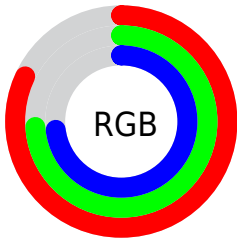
Format	Color
R _Y B	209, 188, 186
Decimal	13745338
CIE Lab	77.91, 7.10, 3.71
CIE LCh	78, 8.015, 27.596
Yxy	53.0669, 0.3319, 0.3315
Android (android.graphics.Color)	4291935418 (0xFFD1BCBA)
YUV	194.0510, -3.9691, 13.1103
Hunter-Lab	72.8470, 2.7303, 7.1267

Details

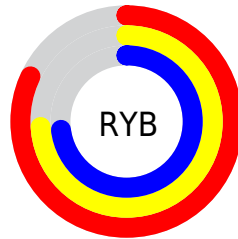
The YUV color $194.0510, -3.9691, 13.1103$ is a light color, and the websafe version is hex `CCCCCC`. A complement of this color would be $200.9490, 3.9691, -13.1103$, and the grayscale version is $194.0000, 0.0000, 0.0000$.

A 20% lighter version of the original color is $247.0610, -2.4951, 6.9625$, and $140.4530, -3.6743, 11.8807$ is the 20% darker color. If you saturate the color by 10%, you get $180.5040, -7.6435, 24.9910$, and if you desaturate by 10%, it is $207.5980, -0.2948, 1.2296$.

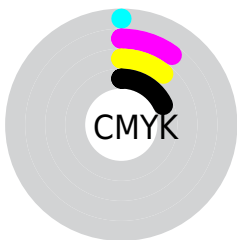
Distribution



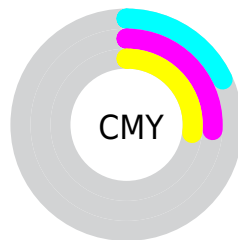
- Red (82%)
- Green (74%)
- Blue (73%)



- Red (82%)
- Yellow (74%)
- Blue (73%)



- Cyan (0%)
- Magenta (10%)
- Yellow (11%)
- Black (18%)



- Cyan (18%)
- Magenta (26%)
- Yellow (27%)

Brightness & Saturation Gradients

These gradients show how the YUV color 194.0510, -3.9691, 13.1103 changes by changing the brightness by 10 percent. The first figure shows a shift by +10% for each color and the second figure -10%.

Similar to the brightness gradients but the following saturation gradients show a change of the YUV color 194.0510, -3.9691, 13.1103 by changing the saturation by 10% instead.

■ 194.0510, -3.9691,
13.1103

■ 194.0510, -3.9691,
13.1103

255.0000, 0.0000,
0.0000

■ 166.7520, -3.8217,
12.4955

■ 247.0610, -2.4951,
6.9625

■ 140.4530, -3.6743,
11.8807

■ 114.5670, -3.2375,
11.7807

■ 90.2680, -3.0901,
11.1660

■ 66.8550, -3.3795,
10.6512

■ 44.6700, -2.7953,
9.9364

■ 23.9580, -2.9373,

8.8068

■ 0.0000, 0.0000,
0.0000

■ 194.0510, -3.9691,
13.1103

■ 194.0510, -3.9691,
13.1103

■ 180.5040, -7.6435,
24.9910

■ 207.5980, -0.2948,
1.2296

■ 166.9570,
-11.3178, 36.8717

■ 221.1450, 3.3795,
-10.6512

■ 153.4100,
-14.9921, 48.7524

■ 234.6920, 7.0538,
-22.5319

■ 139.8630,
-18.6665, 60.6331

■ 241.2460, 6.7807,
-28.2797

■ 126.4300,
-21.9040, 72.4139

■ 112.8830,
-25.5783, 84.2946

■ 98.7490, -28.9633,
96.6901

■ 85.2020, -32.6376,
108.5708

■ 73.0570, -36.0171,
119.2220

Harmonies

Analogous

The Analogous color harmony consists of three colors that are next to each other on the color wheel.



194.5500, -0.7642, 11.7956



194.0510, -3.9691, 13.1103



193.6440, -6.7265, 10.8362

Triad

The Triadic color harmony groups three colors that are evenly spaced from another and form a triangle on the color wheel.



194.0510, -3.9691, 13.1103



190.7450, -3.3253, -6.7924



191.9050, 7.4418, -6.9327

Complementary

The Complementary color scheme is a pair of colors which are on the opposite of each other on the color wheel.



194.0510, -3.9691, 13.1103



200.9490, 3.9691, -13.1103

Split Complementary

Split-complementary colors differ from the complementary color scheme. The scheme consists of three colors, the original color and two neighbors of the complement color.



191.3450, 6.7319, -12.5806



194.0510, -3.9691, 13.1103



190.4500, 0.7642, -11.7956

Square

The Square scheme is like the rectangle color scheme, but the four colors are evenly spaced on the color wheel.



194.0510, -3.9691, 13.1103



191.3930, -6.1097, -0.3447



190.3510, 4.2640, -14.3398



193.6070, 6.1097, 0.3447

Rectangle

The Rectangle color scheme consists of four colors that form a rectangle on the color wheel.



194.0510, -3.9691, 13.1103



192.8070, -7.2999, 8.0623



190.3510, 4.2640, -14.3398



191.8940, 7.4473, -8.6770

Sweetspot

The Sweet Spot groups the original color and five complimentary colors.



194.0510, -3.9691, 13.1103



249.9790, -1.4686, 4.4034



195.2710, 5.7824, 12.0403



124.3810, -1.1738, 3.1739



0.0000, 0.0000, 0.0000



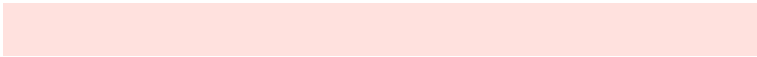
128.0000, 0.0000, 0.0000

Same Dimension

The Same Dimension uses a secret algorithm to generate beautiful new colors.



194.0510, -3.9691, 13.1103



233.6280, -5.7326, 18.7432



200.5080, -7.1524, 7.4475



97.8760, -1.9109, 6.2477



59.0370, -29.1052, 95.5606



14.6070, -7.2013, 23.1467

Inverse Universe

The Inverse Universe completely reimagines the original color for something new.



200.9490, 3.9691, -13.1103



243.3720, 5.7326, -18.7432



194.4920, 7.1524, -7.4475



101.1240, 1.9109, -6.2477



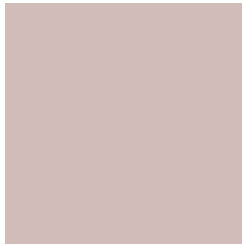
109.5500, 28.8159, -96.0754



26.3930, 7.2013, -23.1467

Previews

White Background



This preview shows how the YUV color 194.0510, -3.9691, 13.1103 looks on a white background.

Color Contrast Check

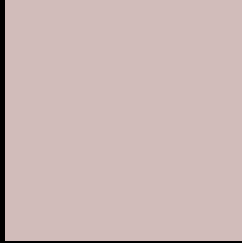
Large Text (above 18pt) WCAG AA × Fail

Any Text WCAG AA × Fail

Large Text (above 18pt) WCAG AAA × Fail

Any Text WCAG AAA × Fail

Black Background



This preview shows how the YUV color 194.0510, -3.9691, 13.1103 looks on a black background.

Color Contrast Check

Large Text (above 18pt) WCAG AA ✓ Pass

Any Text WCAG AA ✓ Pass

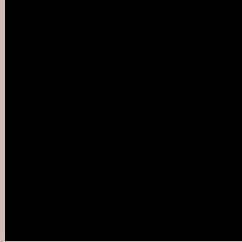
Large Text (above 18pt) WCAG AAA ✓ Pass

Any Text WCAG AAA ✓ Pass

If you want to check with other color combinations, try the [Color Contrast Checker](#).

YUV 194.0510, -3.9691, 13.1103

Background



This preview shows how black text looks on a background with the YUV color 194.0510, -3.9691, 13.1103.



This preview shows how white text looks on a background with the YUV color 194.0510, -3.9691, 13.1103.

Color Blindness Simulation

Color vision deficiency is a very complex topic, and I could not describe the different causes any better than Wikipedia does, so if you want to learn more, you should check out their [article about color blindness](#).

Dichromacy



Original Color

194.0510, -3.9691, 13.1103

Protanopia

193.0390, -2.4842, 3.4738

Deuteranopia

194.3720, -4.1274, 17.2138



Tritanopia

195.0710, 2.4300, 13.9697

Trichromacy



Original Color

194.0510, -3.9691, 13.1103

Protanomaly

193.5340, -3.2213, 6.5477

Deuteranomaly

194.3610, -4.1220, 15.4694

Tritanomaly

194.7890, 0.1040, 13.3400

Monochromacy



Original Color

194.0510, -3.9691, 13.1103

Achromatopsia

194.0000, 0.0000, 0.0000

Achromatomaly

193.9790, -1.4686, 4.4034

CSS Examples

Text

The CSS property to change the color of the text to YUV 194.0510, -3.9691, 13.1103 is called "color". The color property can be set on classes, ids or directly on the HTML element.

This example shows how text in the color `rgb(209, 188, 186)` looks like.

```
.text, #text, p{  
    color:rgb(209, 188, 186)  
}
```

If you want to add a text shadow in that color use the text-shadow property, you can generate a text shadow directly with our [CSS Text Shadow Generator](#).

Here you see how black text with a 4 pixel rgb(209, 188, 186) colored shadow looks like.

```
.shadow{ text-shadow: 4px 4px 2px rgb(209, 188, 186) }
```

Border

The CSS property to change the border of an element to YUV 194.0510, -3.9691, 13.1103 is called "border". The border property can be set on classes, ids or directly on the HTML element.

This example shows the color as border, it can be applied via the CSS property "border" or "border-color".

```
.border, #border, table{ border:4px solid rgb(209, 188, 186) }
```


If only the border color should be changed use the property `border-color`.

```
.border{ border-color:rgb(209, 188, 186) }
```

If you want to add a box shadow in that color use:

Here you see how a box with a 4 pixel `rgb(209, 188, 186)` colored shadow looks like.

```
.boxshadow{ -moz-box-shadow:4px 4px 4px  
4px rgb(209, 188, 186); -webkit-box-  
shadow:4px 4px 4px 4px rgb(209, 188, 186);  
box-shadow:4px 4px 4px 4px rgb(209, 188,  
186) }
```

Background

The CSS property to change the background color of an element to YUV 194.0510, -3.9691, 13.1103 is called "background". The background property can be set on classes, ids or directly on the HTML element.

```
.background, #background, body{  
background: rgb(209, 188, 186) }
```

If only the background color should be changed can be used:

```
.background{ background-color: rgb(209,  
188, 186) }
```

This example shows the color as background, it is applied via the CSS property "background".

To optimize and compress your CSS code, you can use our [online CSS compressor and optimizer](#) based on csstidy. If you want to create a linear or radial gradient as background or border, check our [CSS Gradient Generator](#).

Hey! You found this booklet interesting? Support Converting Colors with the new Membership Option!

The pro membership hides all ads, plus gives you double the colors in the color bucket, and more awesome pro features!

[Learn more, Memberships starting at \\$2.50/m!](#)

**Follow me
on Twitter!**

@ConvertingColor