

Converting Colors

YUV(194.1900, -11.4327,
27.0204)

Have a look what the booklet for
YUV(194.1900, -11.4327, 27.0204)
contains.

YUV(194.1900, -11.4327, 27.0204)	3
<i>Conversions</i>	4
<i>Details</i>	6
<i>Harmonies</i>	12
<i>Previews</i>	24
<i>Color Blindness Simulation</i>	28
<i>CSS Examples</i>	31

Color

**YUV(194.1900, -11.4327,
27.0204)**

Conversions

Conversions Part 1

Format	Color
Hex	E1B7AB
RGB	225, 183, 171
RGB Percent	88%, 72%, 67%
CMY	0.1176, 0.2824, 0.3294
CMYK	0.00, 0.19, 0.24, 0.12
HSL	13°, 47%, 78%
HSV	13°, 24%, 88%
XYZ	55.3355, 52.8148, 45.8059
YIQ	194.1900, 28.8840, 5.1720

Conversions

Conversions Part 2

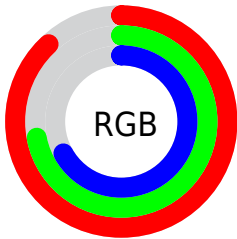
Format	Color
RYB	225, 186, 171
Decimal	14792619
CIELab	77.77, 13.34, 11.81
CIElCh	78, 17.814, 41.507
Yxy	52.8148, 0.3594, 0.3431
Android (android.graphics.Color)	4292982699 (0xFFE1B7AB)
YUV	194.1900, -11.4327, 27.0204
Hunter-Lab	72.6738, 8.7349, 13.5015

Details

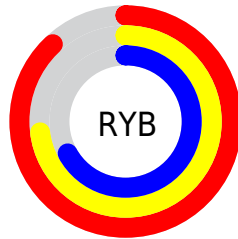
The YUV color $194.1900, -11.4327, 27.0204$ is a light color, and the websafe version is hex FFCCCC . A complement of this color would be $201.8100, 11.4327, -27.0204$, and the grayscale version is $194.0000, 0.0000, 0.0000$.

A 20% lighter version of the original color is $242.3020, -8.0369, 11.1361$, and $140.4070, -10.5537, 25.0761$ is the 20% darker color. If you saturate the color by 10%, you get $181.5890, -16.5594, 38.0714$, and if you desaturate by 10%, it is $207.3780, -6.5954, 15.4545$.

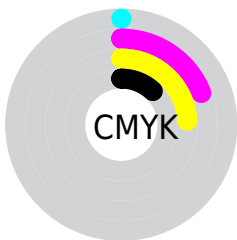
Distribution



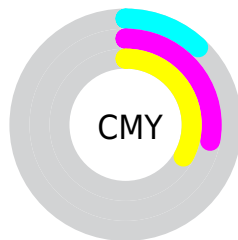
- Red (88%)
- Green (72%)
- Blue (67%)



- Red (88%)
- Yellow (73%)
- Blue (67%)



- Cyan (0%)
- Magenta (19%)
- Yellow (24%)
- Black (12%)



- Cyan (12%)
- Magenta (28%)
- Yellow (33%)

Brightness & Saturation Gradients

These gradients show how the YUV color 194.1900, -11.4327, 27.0204 changes by changing the brightness by 10 percent. The first figure shows a shift by +10% for each color and the second figure -10%.

Similar to the brightness gradients but the following saturation gradients show a change of the YUV color 194.1900, -11.4327, 27.0204 by changing the saturation by 10% instead.

■ 194.1900,
-11.4327, 27.0204

■ 194.1900,
-11.4327, 27.0204

255.0000, 0.0000,
0.0000

■ 166.8910,
-11.2853, 26.4056

■ 242.3020, -8.0369,
11.1361

■ 140.4070,
-10.5537, 25.0761

■ 114.8090,
-10.2588, 23.8465

■ 90.2110, -9.9640,
22.6170

■ 65.8410, -8.7956,
21.1874

■ 43.9440, -8.3534,
19.3431

■ 21.6620, -10.6794,

18.7134

■ 2.9900, -1.4741,
6.1478

■ 0.0000, 0.0000,
0.0000

■ 194.1900,
-11.4327, 27.0204

■ 194.1900,
-11.4327, 27.0204

■ 181.5890,
-16.5594, 38.0714

■ 207.3780, -6.5954,
15.4545

■ 168.5150,
-20.9599, 49.5373

■ 219.8650, -1.9054,
4.5034

■ 155.9140,
-26.0866, 60.5884

■ 232.4660, 3.2213,
-6.5477

■ 142.8400,
-30.4871, 72.0543

■ 244.8560, 5.0010,
-17.4137

■ 130.3530,
-35.1770, 83.0054

■ 246.0300, 4.4222,
-18.4433

■ 117.1650,
-40.0143, 94.5713

■ 104.6780,
-44.7043, 105.5224

■ 96.6250, -47.6361,
112.5849

Harmonies

Analogous

The Analogous color harmony consists of three colors that are next to each other on the color wheel.



195.3240, -4.5967, 27.7799



194.1900, -11.4327, 27.0204



192.9950, -15.7735, 19.2984

Triad

The Triadic color harmony groups three colors that are evenly spaced from another and form a triangle on the color wheel.



194.1900, -11.4327, 27.0204



187.0590, -2.9871, -21.9767



192.0710, 15.7410, -8.8323

Complementary

The Complementary color scheme is a pair of colors which are on the opposite of each other on the color wheel.



194.1900, -11.4327, 27.0204



201.8100, 11.4327, -27.0204

Split Complementary

Split-complementary colors differ from the complementary color scheme. The scheme consists of three colors, the original color and two neighbors of the complement color.



189.4990, 16.5160, -24.1166



194.1900, -11.4327, 27.0204



185.9960, 5.9180, -31.5685

Square

The Square scheme is like the rectangle color scheme, but the four colors are evenly spaced on the color wheel.



194.1900, -11.4327, 27.0204



189.0840, -10.8874, -7.9667



186.5320, 13.0487, -32.0386



194.6170, 11.0348, 7.3519

Rectangle

The Rectangle color scheme consists of four colors that form a rectangle on the color wheel.



194.1900, -11.4327, 27.0204



191.5380, -16.0412, 11.8062



186.5320, 13.0487, -32.0386



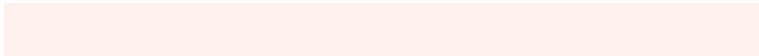
191.2660, 16.6309, -14.2653

Sweetspot

The Sweet Spot groups the original color and five complimentary colors.



194.1900, -11.4327, 27.0204



244.7300, -3.8109, 9.0068



191.9340, 10.3855, 28.9989



122.0500, -2.4896, 5.2182



0.0000, 0.0000, 0.0000



128.0000, 0.0000, 0.0000

Same Dimension

The Same Dimension uses a secret algorithm to generate beautiful new colors.



194.1900, -11.4327, 27.0204



212.5180, -15.5384, 37.2567



210.0390, -19.2462, 13.1208



105.4630, -2.2003, 5.7329



75.5170, -37.2299, 88.1236



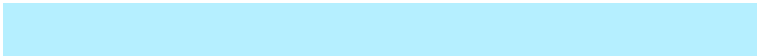
20.8090, -10.2588, 23.8465

Inverse Universe

The Inverse Universe completely reimagines the original color for something new.



201.8100, 11.4327, -27.0204



223.4820, 15.5384, -37.2567



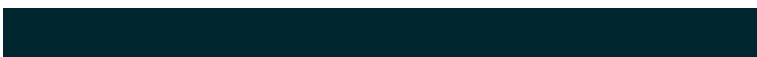
185.9610, 19.2462, -13.1208



107.5370, 2.2003, -5.7329



100.4830, 37.2299, -88.1236



27.7780, 9.9694, -24.3613

Previews

White Background



This preview shows how the YUV color 194.1900, -11.4327, 27.0204 looks on a white background.

Color Contrast Check

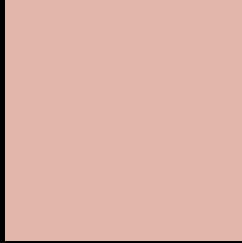
Large Text (above 18pt) WCAG AA × Fail

Any Text WCAG AA × Fail

Large Text (above 18pt) WCAG AAA × Fail

Any Text WCAG AAA × Fail

Black Background



This preview shows how the YUV color 194.1900, -11.4327, 27.0204 looks on a black background.

Color Contrast Check

Large Text (above 18pt) WCAG AA ✓ Pass

Any Text WCAG AA ✓ Pass

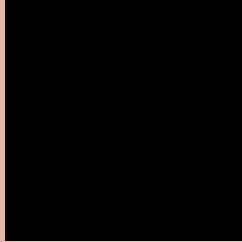
Large Text (above 18pt) WCAG AAA ✓ Pass

Any Text WCAG AAA ✓ Pass

If you want to check with other color combinations, try the [Color Contrast Checker](#).

YUV 194.1900, -11.4327, 27.0204

Background



This preview shows how black text looks on a background with the YUV color 194.1900, -11.4327, 27.0204.



This preview shows how white text looks on a background with the YUV color 194.1900, -11.4327, 27.0204.

Color Blindness Simulation

Color vision deficiency is a very complex topic, and I could not describe the different causes any better than Wikipedia does, so if you want to learn more, you should check out their [article about color blindness](#).

Dichromacy



Original Color

194.1900, -11.4327, 27.0204

Protanopia

192.5680, -8.1680, 6.5179

Deuteranopia

193.5700, -11.1270, 22.3021



Tritanopia

195.9480, -0.9604, 28.1096

Trichromacy



Original Color

194.1900, -11.4327, 27.0204

Protanomaly

193.2700, -9.5001, 13.7952

Deuteranomaly

193.5810, -11.1324, 24.0465

Tritanomaly

195.3240, -4.5967, 27.7799

Monochromacy



Original Color

194.1900, -11.4327, 27.0204

Achromatopsia

194.0000, 0.0000, 0.0000

Achromatomaly

194.0290, -3.9583, 9.6216

CSS Examples

Text

The CSS property to change the color of the text to YUV 194.1900, -11.4327, 27.0204 is called "color". The color property can be set on classes, ids or directly on the HTML element.

This example shows how text in the color `rgb(225, 183, 171)` looks like.

```
.text, #text, p{  
    color:rgb(225, 183, 171)  
}
```

If you want to add a text shadow in that color use the text-shadow property, you can generate a text shadow directly with our [CSS Text Shadow Generator](#).

Here you see how black text with a 4 pixel rgb(225, 183, 171) colored shadow looks like.

```
.shadow{ text-shadow: 4px 4px 2px rgb(225, 183, 171) }
```

Border

The CSS property to change the border of an element to YUV 194.1900, -11.4327, 27.0204 is called "border".

The border property can be set on classes, ids or directly on the HTML element.

This example shows the color as border, it can be applied via the CSS property "border" or "border-color".

```
.border, #border, table{ border:4px solid rgb(225, 183, 171) }
```


If only the border color should be changed use the property border-color.

```
.border{ border-color:rgb(225, 183, 171) }
```

If you want to add a box shadow in that color use:

Here you see how a box with a 4 pixel rgb(225, 183, 171) colored shadow looks like.

```
.boxshadow{ -moz-box-shadow:4px 4px 4px  
4px rgb(225, 183, 171); -webkit-box-  
shadow:4px 4px 4px 4px rgb(225, 183, 171);  
box-shadow:4px 4px 4px 4px rgb(225, 183,  
171) }
```

Background

The CSS property to change the background color of an element to YUV 194.1900, -11.4327, 27.0204 is called "background". The background property can be set on classes, ids or directly on the HTML element.

```
.background, #background, body{  
background: rgb(225, 183, 171) }
```

If only the background color should be changed can be used:

```
.background{ background-color: rgb(225,  
183, 171) }
```

This example shows the color as background, it is applied via the CSS property "background".

To optimize and compress your CSS code, you can use our [online CSS compressor and optimizer](#) based on csstidy. If you want to create a linear or radial gradient as background or border, check our [CSS Gradient Generator](#).

Hey! You found this booklet interesting? Support Converting Colors with the new Membership Option!

The pro membership hides all ads, plus gives you double the colors in the color bucket, and more awesome pro features!

[Learn more, Memberships starting at \\$2.50/m!](#)

**Follow me
on Twitter!**

@ConvertingColor