

Converting Colors

YUV(194.3360, -26.2946,
33.9083)

Have a look what the booklet for
YUV(194.3360, -26.2946, 33.9083)
contains.

YUV(194.3360, -26.2946, 33.9083)	3
<i>Conversions</i>	4
<i>Details</i>	6
<i>Harmonies</i>	12
<i>Previews</i>	24
<i>Color Blindness Simulation</i>	28
<i>CSS Examples</i>	31

Color

**YUV(194.3360, -26.2946,
33.9083)**

Conversions

Conversions Part 1

Format	Color
Hex	E9B98D
RGB	233, 185, 141
RGB Percent	91%, 73%, 55%
CMY	0.0863, 0.2745, 0.4471
CMYK	0.00, 0.21, 0.39, 0.09
HSL	29°, 68%, 73%
HSV	29°, 39%, 91%
XYZ	55.7610, 53.9446, 32.6727
YIQ	194.3360, 42.7320, -3.5080

Conversions

Conversions Part 2

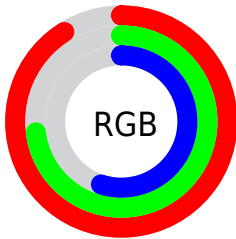
Format	Color
R _{YB}	233, 225, 141
Decimal	15317389
CIE _{Lab}	78.43, 11.55, 28.91
CIE _{LCh}	78, 31.132, 68.231
Yxy	53.9446, 0.3916, 0.3789
Android (android.graphics.Color)	4293507469 (0xFFE9B98D)
YUV	194.3360, -26.2946, 33.9083
Hunter-Lab	73.4470, 6.9849, 25.0379

Details

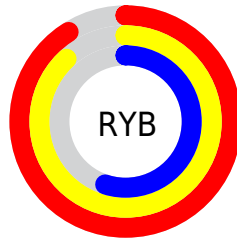
The YUV color $194.3360, -26.2946, 33.9083$ is a light color, and the websafe version is hex FFCC99 . A complement of this color would be $179.6640, 26.2946, -33.9083$, and the grayscale version is $195.0000, 0.0000, 0.0000$.

A 20% lighter version of the original color is $239.9420, -22.1564, 13.2059$, and $140.3680, -24.8314, 31.2493$ is the 20% darker color. If you saturate the color by 10%, you get $184.6700, -32.8683, 42.3854$, and if you desaturate by 10%, it is $204.0020, -19.7210, 25.4312$.

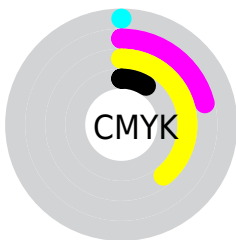
Distribution



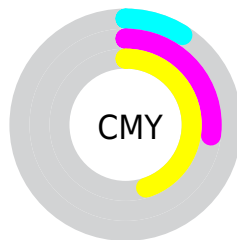
- Red (91%)
- Green (73%)
- Blue (55%)



- Red (91%)
- Yellow (88%)
- Blue (55%)



- Cyan (0%)
- Magenta (21%)
- Yellow (39%)
- Black (9%)



- Cyan (9%)
- Magenta (27%)
- Yellow (45%)

Brightness & Saturation Gradients

These gradients show how the YUV color 194.3360, -26.2946, 33.9083 changes by changing the brightness by 10 percent. The first figure shows a shift by +10% for each color and the second figure -10%.

Similar to the brightness gradients but the following saturation gradients show a change of the YUV color 194.3360, -26.2946, 33.9083 by changing the saturation by 10% instead.

194.3360,
-26.2946, 33.9083

194.3360,
-26.2946, 33.9083

255.0000, 0.0000,
0.0000

166.8520,
-25.5630, 32.5788

239.9420,
-22.1564, 13.2059

140.3680,
-24.8314, 31.2493

251.3520,
-13.9775, 3.1993

114.5850,
-23.9524, 29.3050

254.6580, -1.3104,
0.2999

89.8020, -23.0734,
27.3606

65.1330, -21.7576,
25.3164

42.9370, -21.1679,
22.8573

23.1350, -11.4056,

18.2986

■ 3.5880, -1.7689,
7.3773

■ 0.0000, 0.0000,
0.0000

■ 194.3360,
-26.2946, 33.9083

■ 194.3360,
-26.2946, 33.9083

■ 184.6700,
-32.8683, 42.3854

■ 204.0020,
-19.7210, 25.4312

■ 174.8900,
-39.8788, 50.9625

■ 213.7820,
-12.7105, 16.8542

■ 165.2240,
-46.4524, 59.4396

■ 223.4480, -6.1369,
8.3771

■ 154.9710,
-52.7367, 68.4314

■ 233.7010, 0.1474,
-0.6148

■ 145.3050,
-59.3104, 76.9085

■ 243.1390, 5.8475,
-8.8919

■ 135.5250,
-66.3208, 85.4856

■ 248.4220, 3.2430,
-13.5251

■ 134.8240,
-66.4682, 86.1004

Harmonies

Analogous

The Analogous color harmony consists of three colors that are next to each other on the color wheel.



196.0030, -17.7495, 46.4784



194.3360, -26.2946, 33.9083



191.9760, -27.1032, 13.1760

Triad

The Triadic color harmony groups three colors that are evenly spaced from another and form a triangle on the color wheel.



194.3360, -26.2946, 33.9083



179.9710, 10.3673, -58.7336



197.5600, 20.9229, 9.1559

Complementary

The Complementary color scheme is a pair of colors which are on the opposite of each other on the color wheel.



194.3360, -26.2946, 33.9083



179.6640, 26.2946, -33.9083

Split Complementary

Split-complementary colors differ from the complementary color scheme. The scheme consists of three colors, the original color and two neighbors of the complement color.



193.0230, 28.5827, -21.0682



194.3360, -26.2946, 33.9083



179.5970, 24.3557, -65.4216

Square

The Square scheme is like the rectangle color scheme, but the four colors are evenly spaced on the color wheel.



194.3360, -26.2946, 33.9083



183.8630, -5.8485, -37.5909



185.5910, 30.2746, -50.5073



199.0980, 8.3327, 34.1171

Rectangle

The Rectangle color scheme consists of four colors that form a rectangle on the color wheel.



194.3360, -26.2946, 33.9083



189.7890, -23.5600, -3.3230



185.5910, 30.2746, -50.5073



196.3030, 24.0076, -0.2657

Sweetspot

The Sweet Spot groups the original color and five complimentary colors.



194.3360, -26.2946, 33.9083



242.0740, -8.9105, 11.3361



174.0940, 7.8417, 51.6606



120.0780, -4.9685, 6.9476



0.0000, 0.0000, 0.0000



128.0000, 0.0000, 0.0000

Same Dimension

The Same Dimension uses a secret algorithm to generate beautiful new colors.



194.3360, -26.2946, 33.9083



204.3390, -34.1841, 44.4297



220.7510, -39.3172, 10.7424



112.2240, -3.0684, 4.1886



105.1880, -51.8577, 66.4871



31.4080, -15.4841, 19.8132

Inverse Universe

The Inverse Universe completely reimagines the original color for something new.



179.6640, 26.2946, -33.9083



185.6610, 34.1841, -44.4297



153.2490, 39.3172, -10.7424



110.7760, 3.0684, -4.1886



75.8120, 51.8577, -66.4871



22.5920, 15.4841, -19.8132

Previews

White Background



This preview shows how the YUV color 194.3360, -26.2946, 33.9083 looks on a white background.

Color Contrast Check

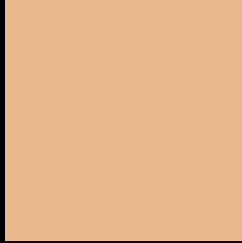
Large Text (above 18pt) WCAG AA × Fail

Any Text WCAG AA × Fail

Large Text (above 18pt) WCAG AAA × Fail

Any Text WCAG AAA × Fail

Black Background



This preview shows how the YUV color 194.3360, -26.2946, 33.9083 looks on a black background.

Color Contrast Check

Large Text (above 18pt) WCAG AA ✓ Pass

Any Text WCAG AA ✓ Pass

Large Text (above 18pt) WCAG AAA ✓ Pass

Any Text WCAG AAA ✓ Pass

If you want to check with other color combinations, try the [Color Contrast Checker](#).

YUV 194.3360, -26.2946, 33.9083

Background



This preview shows how black text looks on a background with the YUV color 194.3360, -26.2946, 33.9083.



This preview shows how white text looks on a background with the YUV color 194.3360, -26.2946, 33.9083.

Color Blindness Simulation

Color vision deficiency is a very complex topic, and I could not describe the different causes any better than Wikipedia does, so if you want to learn more, you should check out their [article about color blindness](#).

Dichromacy



Original Color

194.3360, -26.2946, 33.9083

Protanopia

192.6000, -23.4668, 13.5058

Deuteranopia

194.0260, -26.1418, 31.5492



Tritanopia

197.5360, -2.7292, 35.4869

Trichromacy



Original Color

194.3360, -26.2946, 33.9083

Protanomaly

193.4160, -24.3621, 20.6832

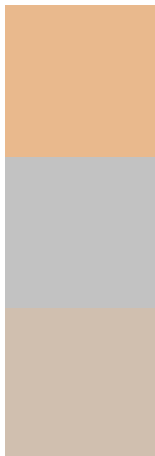
Deuteranomaly

194.3250, -26.2892, 32.1640

Tritanomaly

196.5330, -11.6018, 34.6126

Monochromacy



Original Color

194.3360, -26.2946, 33.9083

Achromatopsia

194.0000, 0.0000, 0.0000

Achromatomaly

194.2590, -9.4947, 12.0509

CSS Examples

Text

The CSS property to change the color of the text to YUV 194.3360, -26.2946, 33.9083 is called "color". The color property can be set on classes, ids or directly on the HTML element.

This example shows how text in the color `rgb(233, 185, 141)` looks like.

```
.text, #text, p{  
    color:rgb(233, 185, 141)  
}
```

If you want to add a text shadow in that color use the text-shadow property, you can generate a text shadow directly with our [CSS Text Shadow Generator](#).

Here you see how black text with a 4 pixel rgb(233, 185, 141) colored shadow looks like.

```
.shadow{ text-shadow: 4px 4px 2px rgb(233, 185, 141) }
```

Border

The CSS property to change the border of an element to YUV 194.3360, -26.2946, 33.9083 is called "border".

The border property can be set on classes, ids or directly on the HTML element.

This example shows the color as border, it can be applied via the CSS property "border" or "border-color".

```
.border, #border, table{ border:4px solid rgb(233, 185, 141) }
```


If only the border color should be changed use the property `border-color`.

```
.border{ border-color:rgb(233, 185, 141) }
```

If you want to add a box shadow in that color use:

Here you see how a box with a 4 pixel `rgb(233, 185, 141)` colored shadow looks like.

```
.boxshadow{ -moz-box-shadow:4px 4px 4px  
4px rgb(233, 185, 141); -webkit-box-  
shadow:4px 4px 4px 4px rgb(233, 185, 141);  
box-shadow:4px 4px 4px 4px rgb(233, 185,  
141) }
```

Background

The CSS property to change the background color of an element to YUV 194.3360, -26.2946, 33.9083 is called "background". The background property can be set on classes, ids or directly on the HTML element.

```
.background, #background, body{  
background: rgb(233, 185, 141) }
```

If only the background color should be changed can be used:

```
.background{ background-color: rgb(233,  
185, 141) }
```

This example shows the color as background, it is applied via the CSS property "background".

To optimize and compress your CSS code, you can use our [online CSS compressor and optimizer](#) based on csstidy. If you want to create a linear or radial gradient as background or border, check our [CSS Gradient Generator](#).

Hey! You found this booklet interesting? Support Converting Colors with the new Membership Option!

The pro membership hides all ads, plus gives you double the colors in the color bucket, and more awesome pro features!

[Learn more, Memberships starting at \\$2.50/m!](#)

**Follow me
on Twitter!**

@ConvertingColor