

# Converting Colors

YUV(194.5140, -6.1694,  
18.8432)

Have a look what the booklet for  
YUV(194.5140, -6.1694, 18.8432)  
contains.

<b>YUV(194.5140, -6.1694, 18.8432)</b> .....	3
<b><i>Conversions</i></b> .....	4
<b><i>Details</i></b> .....	6
<b><i>Harmonies</i></b> .....	12
<b><i>Previews</i></b> .....	24
<b><i>Color Blindness Simulation</i></b> .....	28
<b><i>CSS Examples</i></b> .....	31

# Color

**YUV(194.5140, -6.1694,  
18.8432)**

# Conversions

## Conversions Part 1

<b>Format</b>	<b>Color</b>
Hex	D8BAB6
RGB	216, 186, 182
RGB Percent	85%, 73%, 71%
CMY	0.1529, 0.2706, 0.2863
CMYK	0.00, 0.14, 0.16, 0.15
HSL	7°, 30%, 78%
HSV	7°, 16%, 85%
XYZ	54.3213, 53.0941, 51.6411
YIQ	194.5140, 19.1640, 5.1160

# Conversions

## Conversions Part 2

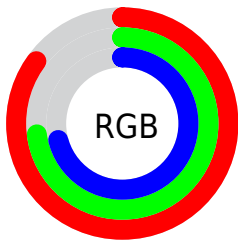
Format	Color
R <sub>Y</sub> B	216, 187, 182
Decimal	14203574
CIE Lab	77.93, 10.06, 5.98
CIE LCh	78, 11.705, 30.718
Yxy	53.0941, 0.3415, 0.3338
Android (android.graphics.Color)	4292393654 (0xFFD8BAB6)
YUV	194.5140, -6.1694, 18.8432
Hunter-Lab	72.8657, 5.5565, 8.9862

# Details

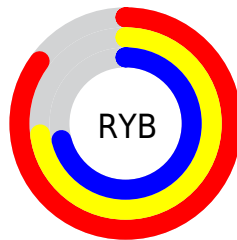
The YUV color  $194.5140, -6.1694, 18.8432$  is a light color, and the websafe version is hex  $\text{FFCCCC}$ . A complement of this color would be  $203.4860, 6.1694, -18.8432$ , and the grayscale version is  $195.0000, 0.0000, 0.0000$ .

A 20% lighter version of the original color is  $245.4310, -3.6635, 8.3920$ , and  $140.9160, -5.8746, 17.6137$  is the 20% darker color. If you saturate the color by 10%, you get  $180.8530, -10.2805, 30.8239$ , and if you desaturate by 10%, it is  $208.1750, -2.0583, 6.8625$ .

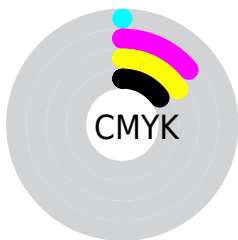
# Distribution



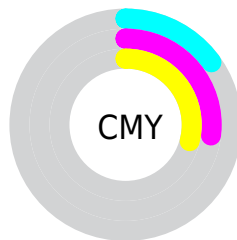
- Red (85%)
- Green (73%)
- Blue (71%)



- Red (85%)
- Yellow (73%)
- Blue (71%)



- Cyan (0%)
- Magenta (14%)
- Yellow (16%)
- Black (15%)



- Cyan (15%)
- Magenta (27%)
- Yellow (29%)


# Brightness & Saturation Gradients

These gradients show how the YUV color 194.5140, -6.1694, 18.8432 changes by changing the brightness by 10 percent. The first figure shows a shift by +10% for each color and the second figure -10%.


Similar to the brightness gradients but the following saturation gradients show a change of the YUV color 194.5140, -6.1694, 18.8432 by changing the saturation by 10% instead.

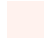


 194.5140, -6.1694,  
18.8432


 194.5140, -6.1694,  
18.8432


255.0000, 0.0000,  
0.0000


 167.2150, -6.0220,  
18.2284


 245.4310, -3.6635,  
8.3920

 140.9160, -5.8746,  
17.6137

 115.3180, -5.5798,  
16.3841

 90.4320, -5.1430,  
16.2841

 66.8340, -4.8482,  
15.0546

 44.3500, -4.1165,  
13.7251

 23.5240, -4.6953,

12.6955

■ 0.8970, -0.4422,  
1.8443

■ 0.0000, 0.0000,  
0.0000

■ 194.5140, -6.1694,  
18.8432

■ 194.5140, -6.1694,  
18.8432

■ 180.8530,  
-10.2805, 30.8239

■ 208.1750, -2.0583,  
6.8625

■ 167.3060,  
-13.9549, 42.7046

■ 221.7220, 1.6161,  
-5.0182

■ 153.6450,  
-18.0660, 54.6853

■ 235.3830, 5.7272,  
-16.9989

■ 140.0980,  
-21.7403, 66.5661

■ 243.3390, 5.7489,  
-23.9763

■ 126.4370,  
-25.8514, 78.5468

■ 112.7760,  
-29.9626, 90.5274

■ 99.2290, -33.6369,  
102.4082

■ 85.5680, -37.7480,  
114.3889

■ 79.2590, -39.0747,  
119.9219

# Harmonies

## Analogous

The Analogous color harmony consists of three colors that are next to each other on the color wheel.



194.8820, -0.9278, 17.6435



194.5140, -6.1694, 18.8432



193.2810, -9.5055, 15.5396

# Triad

The Triadic color harmony groups three colors that are evenly spaced from another and form a triangle on the color wheel.



194.5140, -6.1694, 18.8432



189.8970, -3.8932, -11.3107



192.1050, 10.7942, -8.8621

# Complementary

The Complementary color scheme is a pair of colors which are on the opposite of each other on the color wheel.



194.5140, -6.1694, 18.8432



203.4860, 6.1694, -18.8432

# Split Complementary

Split-complementary colors differ from the complementary color scheme. The scheme consists of three colors, the original color and two neighbors of the complement color.



190.5230, 10.0952, -17.9987



194.5140, -6.1694, 18.8432



188.9330, 1.5120, -18.3582

# Square

The Square scheme is like the rectangle color scheme, but the four colors are evenly spaced on the color wheel.



194.5140, -6.1694, 18.8432



190.8120, -8.2883, -1.5891



189.5890, 6.6116, -20.6876



193.8890, 8.4357, 0.9743



# Rectangle

The Rectangle color scheme consists of four colors that form a rectangle on the color wheel.



194.5140, -6.1694, 18.8432



192.9060, -10.7997, 10.6064



189.5890, 6.6116, -20.6876



191.7840, 10.9525, -12.9656

# Sweetspot

The Sweet Spot groups the original color and five complimentary colors.



194.5140, -6.1694, 18.8432



247.0610, -2.4951, 6.9625



195.5860, 8.0921, 17.9031



122.9790, -1.4686, 4.4034



0.0000, 0.0000, 0.0000



128.0000, 0.0000, 0.0000



# Same Dimension

The Same Dimension uses a secret algorithm to generate beautiful new colors.



194.5140, -6.1694, 18.8432



224.2870, -8.5225, 26.9353



204.4930, -11.0890, 10.0916



100.4630, -2.2003, 5.7329



62.8690, -30.9944, 94.8309



15.7920, -7.7855, 23.8614

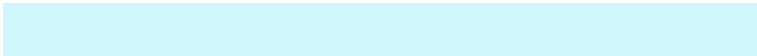


# Inverse Universe

The Inverse Universe completely reimagines the original color for something new.



203.4860, 6.1694, -18.8432



237.1260, 8.8119, -26.4205



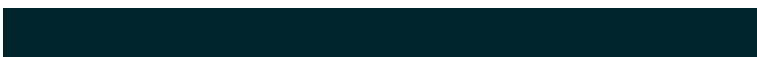
193.5070, 11.0890, -10.0916



103.1240, 1.9109, -6.2477



108.1310, 30.9944, -94.8309

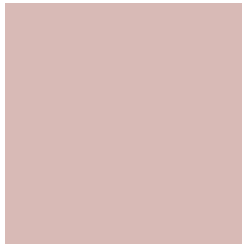


27.2080, 7.7855, -23.8614



# Previews

## White Background



This preview shows how the YUV color 194.5140, -6.1694, 18.8432 looks on a white background.

## Color Contrast Check

Large Text (above 18pt) WCAG AA × Fail

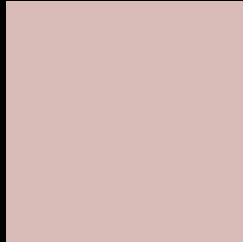
Any Text WCAG AA × Fail

Large Text (above 18pt) WCAG AAA × Fail

Any Text WCAG AAA × Fail



# Black Background



This preview shows how the YUV color 194.5140, -6.1694, 18.8432 looks on a black background.

## Color Contrast Check

Large Text (above 18pt) WCAG AA ✓ Pass

Any Text WCAG AA ✓ Pass

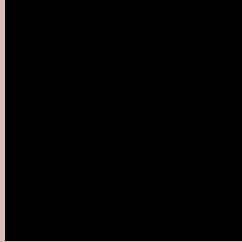
Large Text (above 18pt) WCAG AAA ✓ Pass

Any Text WCAG AAA ✓ Pass

If you want to check with other color combinations, try the [Color Contrast Checker](#).

# YUV 194.5140, -6.1694, 18.8432

## Background



This preview shows how black text looks on a background with the YUV color 194.5140, -6.1694, 18.8432.



This preview shows how white text looks on a background with the YUV color 194.5140, -6.1694,



# Color Blindness Simulation

Color vision deficiency is a very complex topic, and I could not describe the different causes any better than Wikipedia does, so if you want to learn more, you should check out their [article about color blindness](#).

## Dichromacy



### Original Color

194.5140, -6.1694, 18.8432

### Protanopia

192.9960, -3.9420, 4.3885

### Deuteranopia

194.2150, -6.0220, 18.2284



## Tritanopia

195.7620, 1.1033, 19.5027

# Trichromacy



## Original Color

194.5140, -6.1694, 18.8432

## Protanomaly

193.8010, -4.8319, 9.8215

## Deuteranomaly

194.2150, -6.0220, 18.2284

## Tritanomaly

195.3660, -1.6594, 18.9730

# Monochromacy



## Original Color

194.5140, -6.1694, 18.8432

## Achromatopsia

195.0000, 0.0000, 0.0000

## Achromatomaly

195.0610, -2.4951, 6.9625

# CSS Examples

## Text

The CSS property to change the color of the text to YUV 194.5140, -6.1694, 18.8432 is called "color". The color property can be set on classes, ids or directly on the HTML element.

This example shows how text in the color `rgb(216, 186, 182)` looks like.

```
.text, #text, p{  
    color:rgb(216, 186, 182)  
}
```

If you want to add a text shadow in that color use the text-shadow property, you can generate a text shadow directly with our [CSS Text Shadow Generator](#).

Here you see how black text with a 4 pixel rgb(216, 186, 182) colored shadow looks like.

```
.shadow{ text-shadow: 4px 4px 2px rgb(216, 186, 182) }
```

## Border

The CSS property to change the border of an element to YUV 194.5140, -6.1694, 18.8432 is called "border". The border property can be set on classes, ids or directly on the HTML element.

This example shows the color as border, it can be applied via the CSS property "border" or "border-color".

```
.border, #border, table{ border:4px solid rgb(216, 186, 182) }
```



If only the border color should be changed use the property `border-color`.

```
.border{ border-color:rgb(216, 186, 182) }
```

If you want to add a box shadow in that color use:

Here you see how a box with a 4 pixel `rgb(216, 186, 182)` colored shadow looks like.

```
.boxshadow{ -moz-box-shadow:4px 4px 4px 4px rgb(216, 186, 182); -webkit-box-shadow:4px 4px 4px 4px rgb(216, 186, 182); box-shadow:4px 4px 4px 4px rgb(216, 186, 182) }
```

# Background

The CSS property to change the background color of an element to YUV 194.5140, -6.1694, 18.8432 is called "background". The background property can be set on classes, ids or directly on the HTML element.

```
.background, #background, body{  
background: rgb(216, 186, 182) }
```

If only the background color should be changed can be used:

```
.background{ background-color: rgb(216,  
186, 182) }
```

This example shows the color as background, it is applied via the CSS property "background".

To optimize and compress your CSS code, you can use our [online CSS compressor and optimizer](#) based on csstidy. If you want to create a linear or radial gradient as background or border, check our [CSS Gradient Generator](#).

Hey! You found this booklet interesting? Support Converting Colors with the new Membership Option!

The pro membership hides all ads, plus gives you double the colors in the color bucket, and more awesome pro features!

**[Learn more, Memberships starting at \\$2.50/m!](#)**

**Follow me  
on Twitter!**

@ConvertingColor