

Converting Colors

YUV(195.0830, -2.5059,
10.4512)

Have a look what the booklet for
YUV(195.0830, -2.5059, 10.4512)
contains.

YUV(195.0830, -2.5059, 10.4512)	3
<i>Conversions</i>	4
<i>Details</i>	6
<i>Harmonies</i>	12
<i>Previews</i>	24
<i>Color Blindness Simulation</i>	28
<i>CSS Examples</i>	31

Color

**YUV(195.0830, -2.5059,
10.4512)**

Conversions

Conversions Part 1

Format	Color
Hex	CFBEBE
RGB	207, 190, 190
RGB Percent	81%, 75%, 75%
CMY	0.1882, 0.2549, 0.2549
CMYK	0.00, 0.08, 0.08, 0.19
HSL	0°, 15%, 78%
HSV	0°, 8%, 81%
XYZ	53.4398, 53.8100, 56.2850
YIQ	195.0830, 10.1320, 3.6040

Conversions

Conversions Part 2

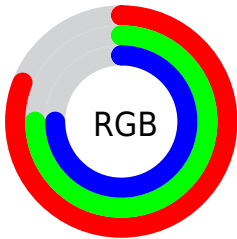
Format	Color
R_{YB}	207, 190, 190
Decimal	13614782
CIE _{Lab}	78.35, 5.99, 2.16
CIE _{LCh}	78, 6.372, 19.832
Yxy	53.8100, 0.3268, 0.3290
Android (android.graphics.Color)	4291804862 (0xFFCFBEBE)
YUV	195.0830, -2.5059, 10.4512
Hunter-Lab	73.3553, 1.6667, 5.8559

Details

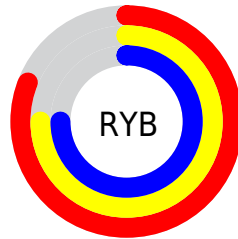
The YUV color $195.0830, -2.5059, 10.4512$ is a light color, and the websafe version is hex `CCCCCC`. A complement of this color would be $201.9170, 2.5059, -10.4512$, and the grayscale version is $195.0000, 0.0000, 0.0000$.

A 20% lighter version of the original color is $248.6910, -1.3267, 5.5330$, and $141.7840, -2.3585, 9.8364$ is the 20% darker color. If you saturate the color by 10%, you get $180.3620, -5.6015, 23.3615$, and if you desaturate by 10%, it is $209.8040, 0.5896, -2.4591$.

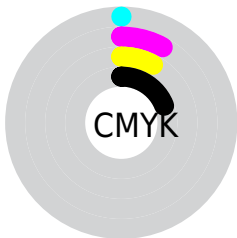
Distribution



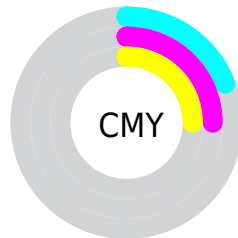
- Red (81%)
- Green (75%)
- Blue (75%)



- Red (81%)
- Yellow (75%)
- Blue (75%)



- Cyan (0%)
- Magenta (8%)
- Yellow (8%)
- Black (19%)



- Cyan (19%)
- Magenta (25%)
- Yellow (25%)

Brightness & Saturation Gradients

These gradients show how the YUV color 195.0830, -2.5059, 10.4512 changes by changing the brightness by 10 percent. The first figure shows a shift by +10% for each color and the second figure -10%.

Similar to the brightness gradients but the following saturation gradients show a change of the YUV color 195.0830, -2.5059, 10.4512 by changing the saturation by 10% instead.

■ 195.0830, -2.5059,
10.4512

■ 195.0830, -2.5059,
10.4512

255.0000, 0.0000,
0.0000

■ 167.7840, -2.3585,
9.8364

■ 248.6910, -1.3267,
5.5330

■ 141.7840, -2.3585,
9.8364

■ 115.7840, -2.3585,
9.8364

■ 91.4850, -2.2111,
9.2217

■ 67.8870, -1.9163,
7.9921

■ 45.8870, -1.9163,
7.9921

■ 24.5880, -1.7689,

7.3773

■ 0.0000, 0.0000,
0.0000

■ 195.0830, -2.5059,
10.4512

■ 195.0830, -2.5059,
10.4512

■ 180.3620, -5.6015,
23.3615

■ 209.8040, 0.5896,
-2.4591

■ 166.3420, -8.5496,
35.6571

■ 223.8240, 3.5378,
-14.7546

■ 151.6210,
-11.6452, 48.5674

■ 238.5450, 6.6333,
-27.6650

■ 136.9000,
-14.7407, 61.4777

■ 240.6480, 7.0755,
-29.5093

■ 122.8800,
-17.6888, 73.7732

■ 108.1590,
-20.7844, 86.6836

■ 93.4380, -23.8799,
99.5939

■ 78.7170, -26.9755,
112.5042

■ 64.6970, -29.9236,
124.7997

Harmonies

Analogous

The Analogous color harmony consists of three colors that are next to each other on the color wheel.



195.1690, 0.4097, 8.6218



195.0830, -2.5059, 10.4512



194.8010, -4.8319, 9.8215

Triad

The Triadic color harmony groups three colors that are evenly spaced from another and form a triangle on the color wheel.



195.0830, -2.5059, 10.4512



192.4680, -3.1887, -3.9184



193.4490, 5.6946, -6.5328

Complementary

The Complementary color scheme is a pair of colors which are on the opposite of each other on the color wheel.



195.0830, -2.5059, 10.4512



201.9170, 2.5059, -10.4512

Split Complementary

Split-complementary colors differ from the complementary color scheme. The scheme consists of three colors, the original color and two neighbors of the complement color.



192.9000, 4.9793, -10.4363



195.0830, -2.5059, 10.4512



191.8310, -0.4097, -8.6218

Square

The Square scheme is like the rectangle color scheme, but the four colors are evenly spaced on the color wheel.



195.0830, -2.5059, 10.4512



193.6320, -5.2416, 1.1997



192.0310, 2.9427, -10.5512



194.3680, 5.2416, -1.1997

Rectangle

The Rectangle color scheme consists of four colors that form a rectangle on the color wheel.



195.0830, -2.5059, 10.4512



194.2630, -5.5527, 7.6623



192.0310, 2.9427, -10.5512



193.4380, 5.7001, -8.2771

Sweetspot

The Sweet Spot groups the original color and five complimentary colors.



195.0830, -2.5059, 10.4512



251.4950, -0.7370, 3.0739



197.0210, 4.9196, 8.7516



125.8970, -0.4422, 1.8443



0.0000, 0.0000, 0.0000



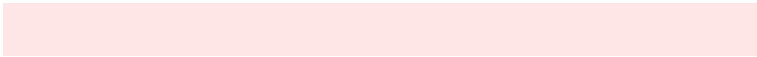
128.0000, 0.0000, 0.0000

Same Dimension

The Same Dimension uses a secret algorithm to generate beautiful new colors.



195.0830, -2.5059, 10.4512



237.4750, -3.6852, 15.3694



200.3660, -5.1104, 5.8180



97.2890, -1.6215, 6.7625



50.2320, -24.7644, 103.2825



12.2590, -6.0437, 25.2059

Inverse Universe

The Inverse Universe completely reimagines the original color for something new.



201.9170, 2.5059, -10.4512



247.5250, 3.6852, -15.3694



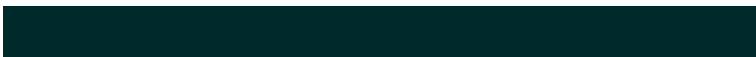
197.2210, 4.8210, -6.3328



101.7110, 1.6215, -6.7625



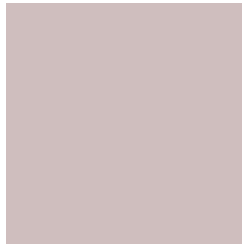
117.7680, 24.7644, -103.2825



28.7410, 6.0437, -25.2059

Previews

White Background



This preview shows how the YUV color 195.0830, -2.5059, 10.4512 looks on a white background.

Color Contrast Check

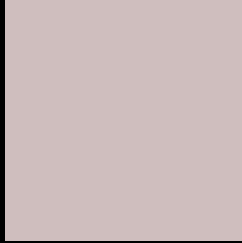
Large Text (above 18pt) WCAG AA × Fail

Any Text WCAG AA × Fail

Large Text (above 18pt) WCAG AAA × Fail

Any Text WCAG AAA × Fail

Black Background



This preview shows how the YUV color 195.0830, -2.5059, 10.4512 looks on a black background.

Color Contrast Check

Large Text (above 18pt) WCAG AA ✓ Pass

Any Text WCAG AA ✓ Pass

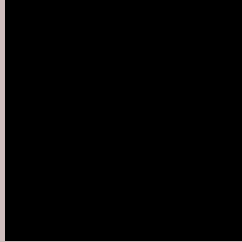
Large Text (above 18pt) WCAG AAA ✓ Pass

Any Text WCAG AAA ✓ Pass

If you want to check with other color combinations, try the [Color Contrast Checker](#).

YUV 195.0830, -2.5059, 10.4512

Background



This preview shows how black text looks on a background with the YUV color 195.0830, -2.5059, 10.4512.



This preview shows how white text looks on a background with the YUV color 195.0830, -2.5059,

Color Blindness Simulation

Color vision deficiency is a very complex topic, and I could not describe the different causes any better than Wikipedia does, so if you want to learn more, you should check out their [article about color blindness](#).

Dichromacy



Original Color

195.0830, -2.5059, 10.4512

Protanopia

194.3810, -1.1738, 3.1739

Deuteranopia

196.0020, -2.9590, 15.7842



Tritanopia

195.9890, 3.4564, 11.4106

Trichromacy



Original Color

195.0830, -2.5059, 10.4512

Protanomaly

194.5770, -1.7635, 5.6330

Deuteranomaly

195.6920, -2.8062, 13.4251

Tritanomaly

195.7070, 1.1304, 10.7810

Monochromacy



Original Color

195.0830, -2.5059, 10.4512

Achromatopsia

195.0000, 0.0000, 0.0000

Achromatomaly

194.7940, -0.8844, 3.6887

CSS Examples

Text

The CSS property to change the color of the text to YUV 195.0830, -2.5059, 10.4512 is called "color". The color property can be set on classes, ids or directly on the HTML element.

This example shows how text in the color `rgb(207, 190, 190)` looks like.

```
.text, #text, p{  
    color:rgb(207, 190, 190)  
}
```

If you want to add a text shadow in that color use the text-shadow property, you can generate a text shadow directly with our [CSS Text Shadow Generator](#).

Here you see how black text with a 4 pixel rgb(207, 190, 190) colored shadow looks like.

```
.shadow{ text-shadow: 4px 4px 2px rgb(207, 190, 190) }
```

Border

The CSS property to change the border of an element to YUV 195.0830, -2.5059, 10.4512 is called "border". The border property can be set on classes, ids or directly on the HTML element.

This example shows the color as border, it can be applied via the CSS property "border" or "border-color".

```
.border, #border, table{ border:4px solid rgb(207, 190, 190) }
```


If only the border color should be changed use the property `border-color`.

```
.border{ border-color:rgb(207, 190, 190) }
```

If you want to add a box shadow in that color use:

Here you see how a box with a 4 pixel `rgb(207, 190, 190)` colored shadow looks like.

```
.boxshadow{ -moz-box-shadow:4px 4px 4px  
4px rgb(207, 190, 190); -webkit-box-  
shadow:4px 4px 4px 4px rgb(207, 190, 190);  
box-shadow:4px 4px 4px 4px rgb(207, 190,  
190) }
```

Background

The CSS property to change the background color of an element to YUV 195.0830, -2.5059, 10.4512 is called "background". The background property can be set on classes, ids or directly on the HTML element.

```
.background, #background, body{  
background: rgb(207, 190, 190) }
```

If only the background color should be changed can be used:

```
.background{ background-color: rgb(207,  
190, 190) }
```

This example shows the color as background, it is applied via the CSS property "background".

To optimize and compress your CSS code, you can use our [online CSS compressor and optimizer](#) based on csstidy. If you want to create a linear or radial gradient as background or border, check our [CSS Gradient Generator](#).

Hey! You found this booklet interesting? Support Converting Colors with the new Membership Option!

The pro membership hides all ads, plus gives you double the colors in the color bucket, and more awesome pro features!

[Learn more, Memberships starting at \\$2.50/m!](#)

**Follow me
on Twitter!**

@ConvertingColor