

Converting Colors

YUV(195.1620, -8.9539,
25.2909)

Have a look what the booklet for
YUV(195.1620, -8.9539, 25.2909)
contains.

YUV(195.1620, -8.9539, 25.2909)	3
<i>Conversions</i>	4
<i>Details</i>	6
<i>Harmonies</i>	12
<i>Previews</i>	24
<i>Color Blindness Simulation</i>	28
<i>CSS Examples</i>	31

Color

**YUV(195.1620, -8.9539,
25.2909)**

Conversions

Conversions Part 1

Format	Color
Hex	E0B8B1
RGB	224, 184, 177
RGB Percent	88%, 72%, 69%
CMY	0.1216, 0.2784, 0.3059
CMYK	0.00, 0.18, 0.21, 0.12
HSL	9°, 43%, 79%
HSV	9°, 21%, 88%
XYZ	55.8168, 53.3026, 48.9415
YIQ	195.1620, 26.0870, 6.3030

Conversions

Conversions Part 2

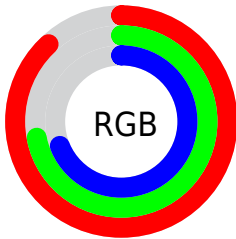
Format	Color
RYB	224, 185, 177
Decimal	14727345
CIELab	78.05, 13.31, 8.96
CIELCh	78, 16.040, 33.946
Yxy	53.3026, 0.3531, 0.3372
Android (android.graphics.Color)	4292917425 (0xFFE0B8B1)
YUV	195.1620, -8.9539, 25.2909
Hunter-Lab	73.0086, 8.7022, 11.3608

Details

The YUV color **195.1620, -8.9539, 25.2909** is a light color, and the websafe version is hex **FFCCCC**. A complement of this color would be **205.8380, 8.9539, -25.2909**, and the grayscale version is **195.0000, 0.0000, 0.0000**.

A 20% lighter version of the original color is **243.6870, -5.2687, 9.9215**, and **141.2650, -8.5116, 23.4466** is the 20% darker color. If you saturate the color by 10%, you get **181.5010, -13.0650, 37.2716**, and if you desaturate by 10%, it is **208.8230, -4.8427, 13.3102**.

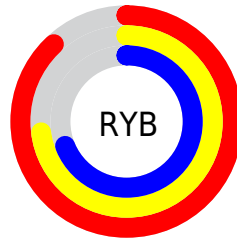
Distribution



Red (88%)

Green (72%)

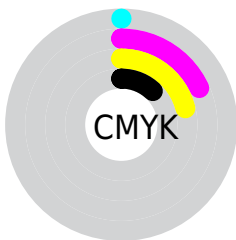
Blue (69%)



Red (88%)

Yellow (73%)

Blue (69%)

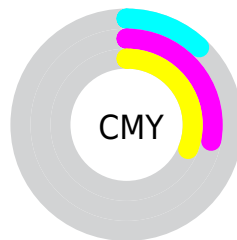


Cyan (0%)

Magenta (18%)

Yellow (21%)

Black (12%)



Cyan (12%)


Magenta (28%)


Yellow (31%)

Brightness & Saturation Gradients

These gradients show how the YUV color 195.1620, -8.9539, 25.2909 changes by changing the brightness by 10 percent. The first figure shows a shift by +10% for each color and the second figure -10%.

Similar to the brightness gradients but the following saturation gradients show a change of the YUV color 195.1620, -8.9539, 25.2909 by changing the saturation by 10% instead.

 195.1620, -8.9539,
25.2909


 195.1620, -8.9539,
25.2909


255.0000, 0.0000,
0.0000


 167.8630, -8.8065,
24.6761


 243.6870, -5.2687,
9.9215

 141.2650, -8.5116,
23.4466

 115.7810, -7.7800,
22.1171

 90.5960, -7.1958,
21.4023

 66.9980, -6.9010,
20.1728

 44.5140, -6.1694,
18.8432

 23.1610, -7.4744,

17.3988

■ 3.8870, -1.9163,
7.9921

■ 0.0000, 0.0000,
0.0000

■ 195.1620, -8.9539,
25.2909

■ 195.1620, -8.9539,
25.2909

■ 181.5010,
-13.0650, 37.2716

■ 208.8230, -4.8427,
13.3102

■ 167.7260,
-17.6129, 49.3523

■ 222.5980, -0.2948,
1.2296

■ 154.0650,
-21.7240, 61.3330

■ 236.2590, 3.8163,
-10.7511

■ 140.2900,
-26.2720, 73.4137

■ 245.7310, 4.5696,
-19.0581

■ 126.6290,
-30.3831, 85.3944

■ 112.9680,
-34.4942, 97.3751

■ 99.1930, -39.0421,
109.4557

■ 86.3470, -42.5691,
120.7217

Harmonies

Analogous

The Analogous color harmony consists of three colors that are next to each other on the color wheel.



195.8720, -2.4019, 23.7913



195.1620, -8.9539, 25.2909



194.2770, -13.4476, 19.9281

Triad

The Triadic color harmony groups three colors that are evenly spaced from another and form a triangle on the color wheel.



195.1620, -8.9539, 25.2909



188.6360, -4.7505, -16.3438



192.7070, 14.4414, -12.0210

Complementary

The Complementary color scheme is a pair of colors which are on the opposite of each other on the color wheel.



195.1620, -8.9539, 25.2909



205.8380, 8.9539, -25.2909

Split Complementary

Split-complementary colors differ from the complementary color scheme. The scheme consists of three colors, the original color and two neighbors of the complement color.



189.9290, 14.3320, -23.6167



195.1620, -8.9539, 25.2909



187.9320, 2.9915, -26.2504

Square

The Square scheme is like the rectangle color scheme, but the four colors are evenly spaced on the color wheel.



195.1620, -8.9539, 25.2909



190.4050, -11.0457, -3.8632



188.1580, 10.2751, -29.0796



194.9970, 11.3405, 2.6336

Rectangle

The Rectangle color scheme consists of four colors that form a rectangle on the color wheel.



195.1620, -8.9539, 25.2909



193.0050, -14.2995, 13.1506



188.1580, 10.2751, -29.0796



191.5000, 15.0365, -16.2245

Sweetspot

The Sweet Spot groups the original color and five complimentary colors.



195.1620, -8.9539, 25.2909



245.6590, -2.7899, 8.1921



195.7270, 10.9806, 24.7954



122.2780, -1.6161, 5.0182



0.0000, 0.0000, 0.0000



128.0000, 0.0000, 0.0000

Same Dimension

The Same Dimension uses a secret algorithm to generate beautiful new colors.



195.1620, -8.9539, 25.2909



216.0060, -12.3280, 34.1977



208.6630, -15.6099, 13.4505



105.4630, -2.2003, 5.7329



67.8860, -33.4678, 94.8160



18.4610, -9.1013, 25.9057

Inverse Universe

The Inverse Universe completely reimagines the original color for something new.



205.8380, 8.9539, -25.2909



230.5810, 12.0386, -34.7125



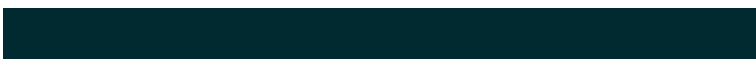
192.3370, 15.6099, -13.4505



108.1240, 1.9109, -6.2477



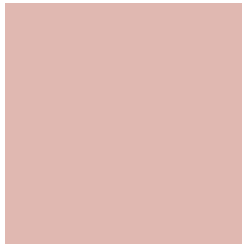
108.1140, 33.4678, -94.8160



29.5390, 9.1013, -25.9057

Previews

White Background



This preview shows how the YUV color 195.1620, -8.9539, 25.2909 looks on a white background.

Color Contrast Check

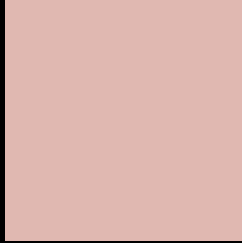
Large Text (above 18pt) WCAG AA × Fail

Any Text WCAG AA × Fail

Large Text (above 18pt) WCAG AAA × Fail

Any Text WCAG AAA × Fail

Black Background



This preview shows how the YUV color 195.1620, -8.9539, 25.2909 looks on a black background.

Color Contrast Check

Large Text (above 18pt) WCAG AA ✓ Pass

Any Text WCAG AA ✓ Pass

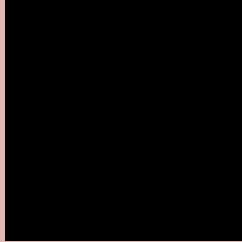
Large Text (above 18pt) WCAG AAA ✓ Pass

Any Text WCAG AAA ✓ Pass

If you want to check with other color combinations, try the [Color Contrast Checker](#).

YUV 195.1620, -8.9539, 25.2909

Background



This preview shows how black text looks on a background with the YUV color 195.1620, -8.9539, 25.2909.



This preview shows how white text looks on a background with the YUV color 195.1620, -8.9539,

25.2909.

Color Blindness Simulation

Color vision deficiency is a very complex topic, and I could not describe the different causes any better than Wikipedia does, so if you want to learn more, you should check out their [article about color blindness](#).

Dichromacy



Original Color

195.1620, -8.9539, 25.2909

Protanopia

192.9530, -5.3998, 5.3032

Deuteranopia

194.5420, -8.6482, 20.5727



Tritanopia

196.0510, -0.5181, 26.2653

Trichromacy



Original Color

195.1620, -8.9539, 25.2909

Protanomaly

193.6550, -6.7319, 12.5806

Deuteranomaly

194.5530, -8.6536, 22.3170

Tritanomaly

195.5410, -3.7177, 25.8355

Monochromacy



Original Color

195.1620, -8.9539, 25.2909

Achromatopsia

195.0000, 0.0000, 0.0000

Achromatomaly

195.1430, -3.5215, 9.5216

CSS Examples

Text

The CSS property to change the color of the text to YUV 195.1620, -8.9539, 25.2909 is called "color". The color property can be set on classes, ids or directly on the HTML element.

This example shows how text in the color `rgb(224, 184, 177)` looks like.

```
.text, #text, p{  
    color:rgb(224, 184, 177)  
}
```

If you want to add a text shadow in that color use the text-shadow property, you can generate a text shadow directly with our [CSS Text Shadow Generator](#).

Here you see how black text with a 4 pixel rgb(224, 184, 177) colored shadow looks like.

```
.shadow{ text-shadow: 4px 4px 2px rgb(224, 184, 177) }
```

Border

The CSS property to change the border of an element to YUV 195.1620, -8.9539, 25.2909 is called "border". The border property can be set on classes, ids or directly on the HTML element.

This example shows the color as border, it can be applied via the CSS property "border" or "border-color".

```
.border, #border, table{ border:4px solid rgb(224, 184, 177) }
```


If only the border color should be changed use the property `border-color`.

```
.border{ border-color:rgb(224, 184, 177) }
```

If you want to add a box shadow in that color use:

Here you see how a box with a 4 pixel `rgb(224, 184, 177)` colored shadow looks like.

```
.boxshadow{ -moz-box-shadow:4px 4px 4px 4px rgb(224, 184, 177); -webkit-box-shadow:4px 4px 4px 4px rgb(224, 184, 177); box-shadow:4px 4px 4px 4px rgb(224, 184, 177) }
```

Background

The CSS property to change the background color of an element to YUV 195.1620, -8.9539, 25.2909 is called "background". The background property can be set on classes, ids or directly on the HTML element.

```
.background, #background, body{  
background: rgb(224, 184, 177) }
```

If only the background color should be changed can be used:

```
.background{ background-color: rgb(224,  
184, 177) }
```

This example shows the color as background, it is applied via the CSS property "background".

To optimize and compress your CSS code, you can use our [online CSS compressor and optimizer](#) based on csstidy. If you want to create a linear or radial gradient as background or border, check our [CSS Gradient Generator](#).

Hey! You found this booklet interesting? Support Converting Colors with the new Membership Option!

The pro membership hides all ads, plus gives you double the colors in the color bucket, and more awesome pro features!

[Learn more, Memberships starting at \\$2.50/m!](#)

**Follow me
on Twitter!**

@ConvertingColor