

Converting Colors

YUV(195.8410, -5.3446,
34.3424)

Have a look what the booklet for
YUV(195.8410, -5.3446, 34.3424)
contains.

YUV(195.8410, -5.3446, 34.3424)	3
<i>Conversions</i>	4
<i>Details</i>	6
<i>Harmonies</i>	12
<i>Previews</i>	24
<i>Color Blindness Simulation</i>	28
<i>CSS Examples</i>	31

Color

**YUV(195.8410, -5.3446,
34.3424)**

Conversions

Conversions Part 1

Format	Color
Hex	EBB2B9
RGB	235, 178, 185
RGB Percent	92%, 70%, 73%
CMY	0.0784, 0.3020, 0.2745
CMYK	0.00, 0.24, 0.21, 0.08
HSL	353°, 59%, 81%
HSV	353°, 24%, 92%
XYZ	58.9383, 53.0057, 53.0237
YIQ	195.8410, 31.7250, 14.2610

Conversions

Conversions Part 2

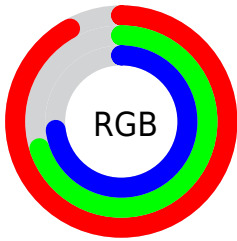
Format	Color
R _Y B	235, 178, 185
Decimal	15446713
CIE Lab	77.88, 21.72, 4.51
CIE LCh	78, 22.188, 11.726
Yxy	53.0057, 0.3573, 0.3213
Android (android.graphics.Color)	4293636793 (0xFFEBB2B9)
YUV	195.8410, -5.3446, 34.3424
Hunter-Lab	72.8050, 17.0934, 7.7828

Details

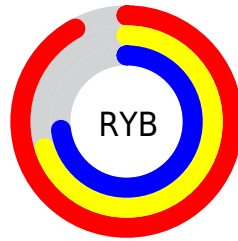
The YUV color $195.8410, -5.3446, 34.3424$ is a light color, and the websafe version is hex FFCCCC . A complement of this color would be $217.1590, 5.3446, -34.3424$, and the grayscale version is $196.0000, 0.0000, 0.0000$.

A 20% lighter version of the original color is $241.0770, -0.0380, 12.2105$, and $141.6450, -4.7550, 31.8833$ is the 20% darker color. If you saturate the color by 10%, you get $179.9460, -7.8614, 48.2824$, and if you desaturate by 10%, it is $212.3230, -3.1172, 19.8877$.

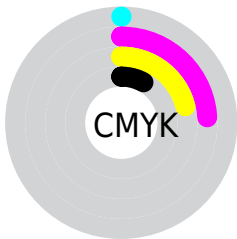
Distribution



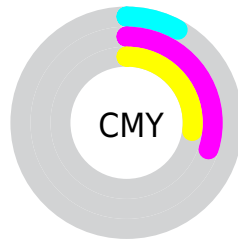
- Red (92%)
- Green (70%)
- Blue (73%)



- Red (92%)
- Yellow (70%)
- Blue (73%)



- Cyan (0%)
- Magenta (24%)
- Yellow (21%)
- Black (8%)



- Cyan (8%)
- Magenta (30%)
- Yellow (27%)

Brightness & Saturation Gradients

These gradients show how the YUV color 195.8410, -5.3446, 34.3424 changes by changing the brightness by 10 percent. The first figure shows a shift by +10% for each color and the second figure -10%.

Similar to the brightness gradients but the following saturation gradients show a change of the YUV color 195.8410, -5.3446, 34.3424 by changing the saturation by 10% instead.

 195.8410, -5.3446,
34.3424

 195.8410, -5.3446,
34.3424


255.0000, 0.0000,
0.0000


 168.2430, -5.0498,
33.1129


 241.0770, -0.0380,
12.2105

 141.6450, -4.7550,
31.8833

 116.0470, -4.4602,
30.6538

 90.5630, -3.7286,
29.3242

 66.6660, -3.2863,
27.4799

 43.7690, -2.8441,
25.6356

 21.2850, -2.1125,

24.3061

■ 7.5890, -3.2484,
15.2694

■ 0.0000, 0.0000,
0.0000

■ 195.8410, -5.3446,
34.3424

■ 195.8410, -5.3446,
34.3424

■ 179.9460, -7.8614,
48.2824

■ 212.3230, -3.1172,
19.8877

■ 163.5780, -9.6520,
62.6371

■ 228.1040, -1.0373,
6.0478

■ 147.6830,
-12.1687, 76.5770

■ 244.5860, 1.1901,
-8.4069

■ 131.3150,
-13.9593, 90.9317

■ 249.0200, 2.9481,
-12.2955

■ 114.8330,
-16.1867, 105.3865

■ 98.9380, -18.7034,
119.3264

■ 83.1570, -20.7834,
133.1663

■ 73.5710, -21.9735,
141.5732

Harmonies

Analogous

The Analogous color harmony consists of three colors that are next to each other on the color wheel.



196.1310, 4.8654, 26.1951



195.8410, -5.3446, 34.3424



194.5390, -14.0697, 32.8533

Triad

The Triadic color harmony groups three colors that are evenly spaced from another and form a triangle on the color wheel.



195.8410, -5.3446, 34.3424



188.6770, -13.6448, -10.2407



188.3070, 21.0476, -30.9642

Complementary

The Complementary color scheme is a pair of colors which are on the opposite of each other on the color wheel.



195.8410, -5.3446, 34.3424



217.1590, 5.3446, -34.3424

Split Complementary

Split-complementary colors differ from the complementary color scheme. The scheme consists of three colors, the original color and two neighbors of the complement color.



185.0900, 16.7176, -42.1749



195.8410, -5.3446, 34.3424



185.6130, -3.2602, -27.7246

Square

The Square scheme is like the rectangle color scheme, but the four colors are evenly spaced on the color wheel.



195.8410, -5.3446, 34.3424



191.0060, -19.2300, 7.8877



184.1090, 7.8343, -39.5606



192.7870, 19.8250, -12.0912

Rectangle

The Rectangle color scheme consists of four colors that form a rectangle on the color wheel.



195.8410, -5.3446, 34.3424



193.7680, -18.1266, 27.3905



184.1090, 7.8343, -39.5606



187.0460, 20.1903, -35.9973

Sweetspot

The Sweet Spot groups the original color and five complimentary colors.



195.8410, -5.3446, 34.3424



242.6100, -1.7797, 10.8660



199.1490, 17.6745, 24.4253



120.5170, -0.7479, 6.5626



0.0000, 0.0000, 0.0000



128.0000, 0.0000, 0.0000

Same Dimension

The Same Dimension uses a secret algorithm to generate beautiful new colors.



195.8410, -5.3446, 34.3424



204.1520, -6.9769, 44.5937



207.3700, -14.4794, 24.2315



109.4030, -1.1847, 6.6626



56.6270, -17.0711, 109.0751



16.9440, -4.9024, 32.4981

Inverse Universe

The Inverse Universe completely reimagines the original color for something new.



195.8410, -5.3446, 34.3424



204.1520, -6.9769, 44.5937



205.6300, 14.4794, -24.2315



109.4030, -1.1847, 6.6626



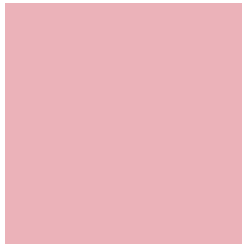
56.6270, -17.0711, 109.0751



16.9440, -4.9024, 32.4981

Previews

White Background



This preview shows how the YUV color 195.8410, -5.3446, 34.3424 looks on a white background.

Color Contrast Check

Large Text (above 18pt) WCAG AA × Fail

Any Text WCAG AA × Fail

Large Text (above 18pt) WCAG AAA × Fail

Any Text WCAG AAA × Fail

Black Background



This preview shows how the YUV color 195.8410, -5.3446, 34.3424 looks on a black background.

Color Contrast Check

Large Text (above 18pt) WCAG AA ✓ Pass

Any Text WCAG AA ✓ Pass

Large Text (above 18pt) WCAG AAA ✓ Pass

Any Text WCAG AAA ✓ Pass

If you want to check with other color combinations, try the [Color Contrast Checker](#).

YUV 195.8410, -5.3446, 34.3424

Background



This preview shows how black text looks on a background with the YUV color 195.8410, -5.3446, 34.3424.



This preview shows how white text looks on a background with the YUV color 195.8410, -5.3446,

Color Blindness Simulation

Color vision deficiency is a very complex topic, and I could not describe the different causes any better than Wikipedia does, so if you want to learn more, you should check out their [article about color blindness](#).

Dichromacy



Original Color

195.8410, -5.3446, 34.3424

Protanopia

193.3100, -0.1528, 2.3591

Deuteranopia

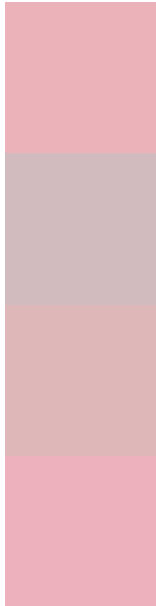
194.3290, -5.5852, 18.1285



Tritanopia

196.2370, -2.5818, 34.8722

Trichromacy



Original Color

195.8410, -5.3446, 34.3424

Protanomaly

194.2190, -2.0800, 13.8399

Deuteranomaly

194.7750, -5.3121, 23.8763

Tritanomaly

196.0090, -3.4554, 35.0721

Monochromacy



Original Color

195.8410, -5.3446, 34.3424

Achromatopsia

196.0000, 0.0000, 0.0000

Achromatomaly

195.6210, -1.7852, 12.6104

CSS Examples

Text

The CSS property to change the color of the text to YUV 195.8410, -5.3446, 34.3424 is called "color". The color property can be set on classes, ids or directly on the HTML element.

This example shows how text in the color `rgb(235, 178, 185)` looks like.

```
.text, #text, p{  
    color:rgb(235, 178, 185)  
}
```

If you want to add a text shadow in that color use the text-shadow property, you can generate a text shadow directly with our [CSS Text Shadow Generator](#).

Here you see how black text with a 4 pixel rgb(235, 178, 185) colored shadow looks like.

```
.shadow{ text-shadow: 4px 4px 2px rgb(235, 178, 185) }
```

Border

The CSS property to change the border of an element to YUV 195.8410, -5.3446, 34.3424 is called "border". The border property can be set on classes, ids or directly on the HTML element.

This example shows the color as border, it can be applied via the CSS property "border" or "border-color".

```
.border, #border, table{ border:4px solid rgb(235, 178, 185) }
```


If only the border color should be changed use the property `border-color`.

```
.border{ border-color:rgb(235, 178, 185) }
```

If you want to add a box shadow in that color use:

Here you see how a box with a 4 pixel `rgb(235, 178, 185)` colored shadow looks like.

```
.boxshadow{ -moz-box-shadow:4px 4px 4px  
4px rgb(235, 178, 185); -webkit-box-  
shadow:4px 4px 4px 4px rgb(235, 178, 185);  
box-shadow:4px 4px 4px 4px rgb(235, 178,  
185) }
```

Background

The CSS property to change the background color of an element to YUV 195.8410, -5.3446, 34.3424 is called "background". The background property can be set on classes, ids or directly on the HTML element.

```
.background, #background, body{  
background: rgb(235, 178, 185) }
```

If only the background color should be changed can be used:

```
.background{ background-color: rgb(235,  
178, 185) }
```

This example shows the color as background, it is applied via the CSS property "background".

To optimize and compress your CSS code, you can use our [online CSS compressor and optimizer](#) based on csstidy. If you want to create a linear or radial gradient as background or border, check our [CSS Gradient Generator](#).

Hey! You found this booklet interesting? Support Converting Colors with the new Membership Option!

The pro membership hides all ads, plus gives you double the colors in the color bucket, and more awesome pro features!

[Learn more, Memberships starting at \\$2.50/m!](#)

**Follow me
on Twitter!**

@ConvertingColor