

Converting Colors

YUV(195.9390, -10.8159,
15.8395)

Have a look what the booklet for
YUV(195.9390, -10.8159, 15.8395)
contains.

YUV(195.9390, -10.8159, 15.8395)	3
<i>Conversions</i>	4
<i>Details</i>	6
<i>Harmonies</i>	12
<i>Previews</i>	24
<i>Color Blindness Simulation</i>	28
<i>CSS Examples</i>	31

Color

**YUV(195.9390, -10.8159,
15.8395)**

Conversions

Conversions Part 1

Format	Color
Hex	D6BFAE
RGB	214, 191, 174
RGB Percent	84%, 75%, 68%
CMY	0.1608, 0.2510, 0.3176
CMYK	0.00, 0.11, 0.19, 0.16
HSL	25°, 33%, 76%
HSV	25°, 19%, 84%
XYZ	54.0023, 54.6137, 47.7397
YIQ	195.9390, 19.1650, -0.4110

Conversions

Conversions Part 2

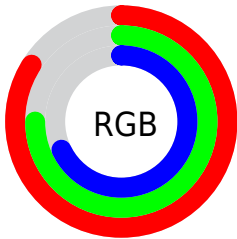
Format	Color
R _Y B	214, 204, 174
Decimal	14073774
CIE Lab	78.82, 5.42, 11.54
CIE LCh	79, 12.751, 64.833
Yxy	54.6137, 0.3454, 0.3493
Android (android.graphics.Color)	4292263854 (0xFFD6BFAE)
YUV	195.9390, -10.8159, 15.8395
Hunter-Lab	73.9011, 1.1098, 13.4298

Details

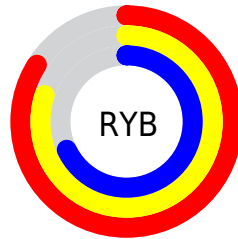
The YUV color $195.9390, -10.8159, 15.8395$ is a light color, and the websafe version is hex `CCCCCC`. A complement of this color would be $192.0610, 10.8159, -15.8395$, and the grayscale version is $196.0000, 0.0000, 0.0000$.

A 20% lighter version of the original color is $247.3400, -9.0416, 6.7178$, and $142.4550, -10.0843, 14.5100$ is the 20% darker color. If you saturate the color by 10%, you get $186.5010, -16.5160, 24.1166$, and if you desaturate by 10%, it is $205.3770, -5.1159, 7.5624$.

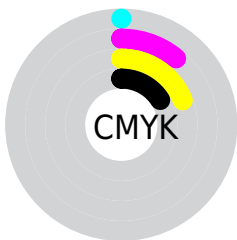
Distribution



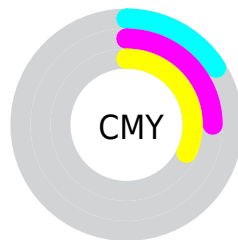
- Red (84%)
- Green (75%)
- Blue (68%)



- Red (84%)
- Yellow (80%)
- Blue (68%)



- Cyan (0%)
- Magenta (11%)
- Yellow (19%)
- Black (16%)



- Cyan (16%)
- Magenta (25%)
- Yellow (32%)

Brightness & Saturation Gradients

These gradients show how the YUV color 195.9390, -10.8159, 15.8395 changes by changing the brightness by 10 percent. The first figure shows a shift by +10% for each color and the second figure -10%.

Similar to the brightness gradients but the following saturation gradients show a change of the YUV color 195.9390, -10.8159, 15.8395 by changing the saturation by 10% instead.

■ 195.9390,
-10.8159, 15.8395

■ 195.9390,
-10.8159, 15.8395

255.0000, 0.0000,
0.0000

■ 168.6400,
-10.6685, 15.2247

■ 247.3400, -9.0416,
6.7178

■ 142.4550,
-10.0843, 14.5100

■ 116.5690, -9.6475,
14.4100

■ 91.9710, -9.3527,
13.1804

■ 68.3730, -9.0579,
11.9509

■ 46.1880, -8.4737,
11.2361

■ 24.4330, -10.0735,

11.0213

■ 0.2990, -0.1474,
0.6148

■ 0.0000, 0.0000,
0.0000

■ 195.9390,
-10.8159, 15.8395

■ 195.9390,
-10.8159, 15.8395

■ 186.5010,
-16.5160, 24.1166

■ 205.3770, -5.1159,
7.5624

■ 176.3620,
-22.3635, 33.0085

■ 215.5160, 0.7316,
-1.3295

■ 166.9240,
-28.0635, 41.2857

■ 224.9540, 6.4317,
-9.6067

■ 157.3720,
-34.2004, 49.6628

■ 233.9360, 10.3846,
-17.4839

■ 147.3470,
-39.6111, 58.4547

■ 241.5670, 6.6225,
-24.1763

■ 137.9090,
-45.3111, 66.7318

■ 242.7410, 6.0437,
-25.2059

■ 128.3570,
-51.4480, 75.1089

■ 118.9190,
-57.1481, 83.3860

■ 117.4030,
-57.8797, 84.7156

Harmonies

Analogous

The Analogous color harmony consists of three colors that are next to each other on the color wheel.



196.8840, -7.3378, 20.2727



195.9390, -10.8159, 15.8395



194.7700, -11.2256, 7.2177

Triad

The Triadic color harmony groups three colors that are evenly spaced from another and form a triangle on the color wheel.



195.9390, -10.8159, 15.8395



190.9650, 2.9753, -21.0173



196.4270, 9.1565, 3.1335

Complementary

The Complementary color scheme is a pair of colors which are on the opposite of each other on the color wheel.



195.9390, -10.8159, 15.8395



192.0610, 10.8159, -15.8395

Split Complementary

Split-complementary colors differ from the complementary color scheme. The scheme consists of three colors, the original color and two neighbors of the complement color.



194.6320, 11.5204, -8.4473



195.9390, -10.8159, 15.8395



191.0340, 8.3642, -22.8318

Square

The Square scheme is like the rectangle color scheme, but the four colors are evenly spaced on the color wheel.



195.9390, -10.8159, 15.8395



191.7010, -3.3036, -13.7698



192.8650, 11.4056, -18.2986



197.4130, 3.7404, 13.6698

Rectangle

The Rectangle color scheme consists of four colors that form a rectangle on the color wheel.



195.9390, -10.8159, 15.8395



193.4810, -9.6041, 0.4552



192.8650, 11.4056, -18.2986



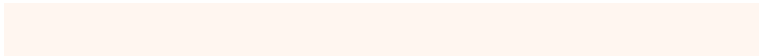
196.3340, 10.1883, -1.1699

Sweetspot

The Sweet Spot groups the original color and five complimentary colors.



195.9390, -10.8159, 15.8395



248.0070, -3.9475, 6.1329



188.5820, 4.1501, 22.2916



123.4520, -2.1948, 3.9886



0.0000, 0.0000, 0.0000



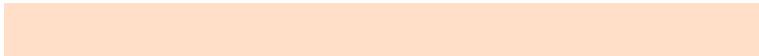
128.0000, 0.0000, 0.0000

Same Dimension

The Same Dimension uses a secret algorithm to generate beautiful new colors.



195.9390, -10.8159, 15.8395



229.8320, -15.2002, 22.0723



207.6790, -16.6037, 5.5435



102.2240, -3.0684, 4.1886



93.9800, -46.3321, 67.5465



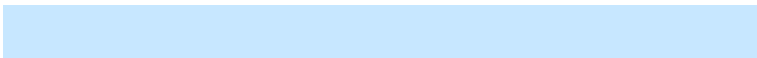
23.4230, -11.5475, 17.1690

Inverse Universe

The Inverse Universe completely reimagines the original color for something new.



192.0610, 10.8159, -15.8395



224.1680, 15.2002, -22.0723



180.3210, 16.6037, -5.5435



101.3630, 2.7790, -4.7034



77.0200, 46.3321, -67.5465



19.5770, 11.5475, -17.1690

Previews

White Background



This preview shows how the YUV color 195.9390, -10.8159, 15.8395 looks on a white background.

Color Contrast Check

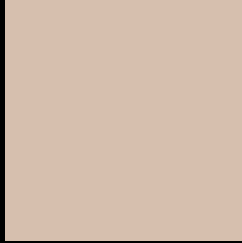
Large Text (above 18pt) WCAG AA × Fail

Any Text WCAG AA × Fail

Large Text (above 18pt) WCAG AAA × Fail

Any Text WCAG AAA × Fail

Black Background



This preview shows how the YUV color 195.9390, -10.8159, 15.8395 looks on a black background.

Color Contrast Check

Large Text (above 18pt) WCAG AA ✓ Pass

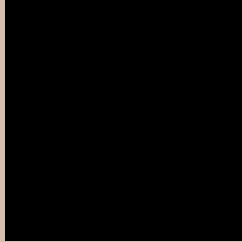
Any Text WCAG AA ✓ Pass

Large Text (above 18pt) WCAG AAA ✓ Pass

Any Text WCAG AAA ✓ Pass

If you want to check with other color combinations, try the [Color Contrast Checker](#).

YUV 195.9390, -10.8159, 15.8395 Background



This preview shows how black text looks on a background with the YUV color 195.9390, -10.8159, 15.8395.



This preview shows how white text looks on a background with the YUV color 195.9390, -10.8159, 15.8395.

15.8395.

Color Blindness Simulation

Color vision deficiency is a very complex topic, and I could not describe the different causes any better than Wikipedia does, so if you want to learn more, you should check out their [article about color blindness](#).

Dichromacy



Original Color

195.9390, -10.8159, 15.8395

Protanopia

195.2260, -9.4784, 6.8178

Deuteranopia

196.6840, -10.6902, 22.2021



Tritanopia

197.9790, 1.9824, 17.5584

Trichromacy



Original Color

195.9390, -10.8159, 15.8395

Protanomaly

195.7210, -10.2155, 9.8917

Deuteranomaly

196.3740, -10.5374, 19.8430

Tritanomaly

197.1270, -2.5276, 17.4286

Monochromacy



Original Color

195.9390, -10.8159, 15.8395

Achromatopsia

196.0000, 0.0000, 0.0000

Achromatomaly

196.0070, -3.9475, 6.1329

CSS Examples

Text

The CSS property to change the color of the text to YUV 195.9390, -10.8159, 15.8395 is called "color". The color property can be set on classes, ids or directly on the HTML element.

This example shows how text in the color `rgb(214, 191, 174)` looks like.

```
.text, #text, p{  
    color:rgb(214, 191, 174)  
}
```

If you want to add a text shadow in that color use the text-shadow property, you can generate a text shadow directly with our [CSS Text Shadow Generator](#).

Here you see how black text with a 4 pixel rgb(214, 191, 174) colored shadow looks like.

```
.shadow{ text-shadow: 4px 4px 2px rgb(214, 191, 174) }
```

Border

The CSS property to change the border of an element to YUV 195.9390, -10.8159, 15.8395 is called "border".

The border property can be set on classes, ids or directly on the HTML element.

This example shows the color as border, it can be applied via the CSS property "border" or "border-color".

```
.border, #border, table{ border:4px solid rgb(214, 191, 174) }
```


If only the border color should be changed use the property `border-color`.

```
.border{ border-color:rgb(214, 191, 174) }
```

If you want to add a box shadow in that color use:

Here you see how a box with a 4 pixel `rgb(214, 191, 174)` colored shadow looks like.

```
.boxshadow{ -moz-box-shadow:4px 4px 4px  
4px rgb(214, 191, 174); -webkit-box-  
shadow:4px 4px 4px 4px rgb(214, 191, 174);  
box-shadow:4px 4px 4px 4px rgb(214, 191,  
174) }
```

Background

The CSS property to change the background color of an element to YUV 195.9390, -10.8159, 15.8395 is called "background". The background property can be set on classes, ids or directly on the HTML element.

```
.background, #background, body{  
background: rgb(214, 191, 174) }
```

If only the background color should be changed can be used:

```
.background{ background-color: rgb(214,  
191, 174) }
```

This example shows the color as background, it is applied via the CSS property "background".

To optimize and compress your CSS code, you can use our [online CSS compressor and optimizer](#) based on csstidy. If you want to create a linear or radial gradient as background or border, check our [CSS Gradient Generator](#).

Hey! You found this booklet interesting? Support Converting Colors with the new Membership Option!

The pro membership hides all ads, plus gives you double the colors in the color bucket, and more awesome pro features!

[Learn more, Memberships starting at \\$2.50/m!](#)

**Follow me
on Twitter!**

@ConvertingColor