

Converting Colors

YUV(196.5120, 0.2406, 16.2140)

Have a look what the booklet for
YUV(196.5120, 0.2406, 16.2140)
contains.

YUV(196.5120, 0.2406, 16.2140)	3
<i>Conversions</i>	4
<i>Details</i>	6
<i>Harmonies</i>	12
<i>Previews</i>	24
<i>Color Blindness Simulation</i>	28
<i>CSS Examples</i>	31

Color

**YUV(196.5120, 0.2406,
16.2140)**

Conversions

Conversions Part 1

Format	Color
Hex	D7BBC5
RGB	215, 187, 197
RGB Percent	84%, 73%, 77%
CMY	0.1569, 0.2667, 0.2275
CMYK	0.00, 0.13, 0.08, 0.16
HSL	339°, 26%, 79%
HSV	339°, 13%, 84%
XYZ	55.8727, 54.0189, 60.3052
YIQ	196.5120, 13.4780, 9.0460

Conversions

Conversions Part 2

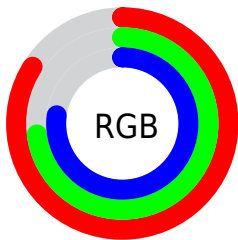
Format	Color
R _Y B	215, 187, 197
Decimal	14138309
CIE Lab	78.47, 11.64, -1.36
CIE LCh	78, 11.718, 353.325
Yxy	54.0189, 0.3283, 0.3174
Android (android.graphics.Color)	4292328389 (0xFFD7BBC5)
YUV	196.5120, 0.2406, 16.2140
Hunter-Lab	73.4976, 7.0746, 2.8005

Details

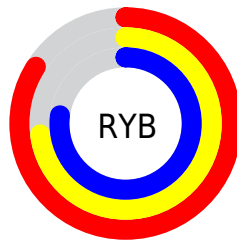
The YUV color $196.5120, 0.2406, 16.2140$ is a light color, and the websafe version is hex `CCCCCC`. A complement of this color would be $205.4880, -0.2406, -16.2140$, and the grayscale version is $197.0000, 0.0000, 0.0000$.

A 20% lighter version of the original color is $247.8420, 3.0359, 6.2776$, and $142.8000, 0.0986, 15.0844$ is the 20% darker color. If you saturate the color by 10%, you get $182.5890, 0.2026, 28.4244$, and if you desaturate by 10%, it is $211.0220, -0.0108, 3.4887$.

Distribution



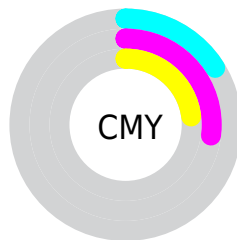
- Red (84%)
- Green (73%)
- Blue (77%)



- Red (84%)
- Yellow (73%)
- Blue (77%)



- Cyan (0%)
- Magenta (13%)
- Yellow (8%)
- Black (16%)



- Cyan (16%)
- Magenta (27%)
- Yellow (23%)

Brightness & Saturation Gradients

These gradients show how the YUV color 196.5120, 0.2406, 16.2140 changes by changing the brightness by 10 percent. The first figure shows a shift by +10% for each color and the second figure -10%.

Similar to the brightness gradients but the following saturation gradients show a change of the YUV color 196.5120, 0.2406, 16.2140 by changing the saturation by 10% instead.

■ 196.5120, 0.2406,
16.2140

■ 196.5120, 0.2406,
16.2140

255.0000, 0.0000,
0.0000

■ 169.2130, 0.3880,
15.5992

■ 247.8420, 3.0359,
6.2776

■ 142.8000, 0.0986,
15.0844

■ 116.9140, 0.5354,
14.9844

■ 92.2020, 0.3934,
13.8548

■ 68.9030, 0.5408,
13.2401

■ 46.1910, 0.3988,
12.1105

■ 25.0060, 0.9830,

11.3957

■ 3.8870, -1.9163,
7.9921

■ 0.0000, 0.0000,
0.0000

■ 196.5120, 0.2406,
16.2140

■ 196.5120, 0.2406,
16.2140

■ 182.5890, 0.2026,
28.4244

■ 211.0220, -0.0108,
3.4887

■ 168.0790, 0.4541,
41.1497

■ 224.9450, 0.0271,
-8.7218

■ 153.6830, 1.1423,
53.7750

■ 239.3410, -0.6611,
-21.3471

■ 139.7600, 1.1043,
65.9855

■ 242.6980, 4.5859,
-24.2911

■ 125.2500, 1.3558,
78.7108

■ 243.0400, 5.8963,
-24.5911

■ 111.3270, 1.3178,
90.9212

■ 96.8170, 1.5692,
103.6465

■ 82.8940, 1.5313,
115.8570

■ 73.0630, 1.9409,
124.4787

Harmonies

Analogous

The Analogous color harmony consists of three colors that are next to each other on the color wheel.



196.1350, 5.3564, 8.6516



196.5120, 0.2406, 16.2140



196.1550, -5.0064, 19.1581

Triad

The Triadic color harmony groups three colors that are evenly spaced from another and form a triangle on the color wheel.



196.5120, 0.2406, 16.2140



192.8940, -9.3147, 0.9700



191.6970, 9.5164, -19.0283

Complementary

The Complementary color scheme is a pair of colors which are on the opposite of each other on the color wheel.



196.5120, 0.2406, 16.2140



205.4880, -0.2406, -16.2140

Split Complementary

Split-complementary colors differ from the complementary color scheme. The scheme consists of three colors, the original color and two neighbors of the complement color.



190.3610, 5.7380, -20.4876



196.5120, 0.2406, 16.2140



191.5660, -5.2090, -9.2664

Square

The Square scheme is like the rectangle color scheme, but the four colors are evenly spaced on the color wheel.



196.5120, 0.2406, 16.2140



194.6070, -10.6523, 9.9917



190.8900, 0.0542, -17.4435



193.3820, 10.6577, -11.7360

Rectangle

The Rectangle color scheme consists of four colors that form a rectangle on the color wheel.



196.5120, 0.2406, 16.2140



195.4600, -7.6218, 18.0136



190.8900, 0.0542, -17.4435



191.4580, 8.6482, -20.5727

Sweetspot

The Sweet Spot groups the original color and five complimentary colors.



196.5120, 0.2406, 16.2140



248.3320, -0.1637, 5.8478



195.5740, 9.5770, 8.2666



123.3210, -0.1583, 4.1035



0.0000, 0.0000, 0.0000



128.0000, 0.0000, 0.0000

Same Dimension

The Same Dimension uses a secret algorithm to generate beautiful new colors.



196.5120, 0.2406, 16.2140



227.9690, 0.5083, 23.7062



197.7200, -5.2850, 15.1546



99.7450, 0.1257, 6.3626



58.0830, 1.4381, 99.0282



14.5670, 0.2135, 24.9357

Inverse Universe

The Inverse Universe completely reimagines the original color for something new.



196.5120, 0.2406, 16.2140



227.9690, 0.5083, 23.7062



204.2800, 5.2850, -15.1546



99.7450, 0.1257, 6.3626



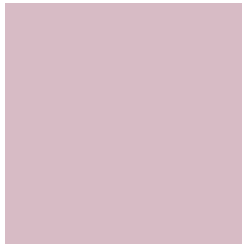
58.0830, 1.4381, 99.0282



14.5670, 0.2135, 24.9357

Previews

White Background



This preview shows how the YUV color 196.5120, 0.2406, 16.2140 looks on a white background.

Color Contrast Check

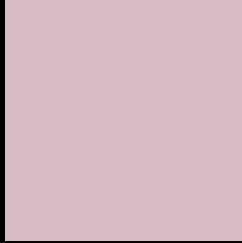
Large Text (above 18pt) WCAG AA × Fail

Any Text WCAG AA × Fail

Large Text (above 18pt) WCAG AAA × Fail

Any Text WCAG AAA × Fail

Black Background



This preview shows how the YUV color 196.5120, 0.2406, 16.2140 looks on a black background.

Color Contrast Check

Large Text (above 18pt) WCAG AA ✓ Pass

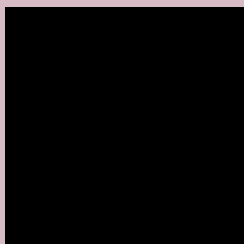
Any Text WCAG AA ✓ Pass

Large Text (above 18pt) WCAG AAA ✓ Pass

Any Text WCAG AAA ✓ Pass

If you want to check with other color combinations, try the [Color Contrast Checker](#).

YUV 196.5120, 0.2406, 16.2140 Background



This preview shows how black text looks on a background with the YUV color 196.5120, 0.2406, 16.2140.



This preview shows how white text looks on a background with the YUV color 196.5120, 0.2406,

Color Blindness Simulation

Color vision deficiency is a very complex topic, and I could not describe the different causes any better than Wikipedia does, so if you want to learn more, you should check out their [article about color blindness](#).

Dichromacy



Original Color

196.5120, 0.2406, 16.2140

Protanopia

194.8090, 3.0522, 1.0445

Deuteranopia

196.2020, 0.3934, 13.8548



Tritanopia

196.6800, 2.1298, 16.9436

Trichromacy



Original Color

196.5120, 0.2406, 16.2140

Protanomaly

195.6140, 2.1623, 6.4775

Deuteranomaly

196.5010, 0.2460, 14.4696

Tritanomaly

196.5660, 1.6930, 17.0436

Monochromacy



Original Color

196.5120, 0.2406, 16.2140

Achromatopsia

197.0000, 0.0000, 0.0000

Achromatomaly

196.7450, 0.1257, 6.3626

CSS Examples

Text

The CSS property to change the color of the text to YUV 196.5120, 0.2406, 16.2140 is called "color". The color property can be set on classes, ids or directly on the HTML element.

This example shows how text in the color `rgb(215, 187, 197)` looks like.

```
.text, #text, p{  
    color:rgb(215, 187, 197)  
}
```

If you want to add a text shadow in that color use the text-shadow property, you can generate a text shadow directly with our [CSS Text Shadow Generator](#).

Here you see how black text with a 4 pixel rgb(215, 187, 197) colored shadow looks like.

```
.shadow{ text-shadow: 4px 4px 2px rgb(215, 187, 197) }
```

Border

The CSS property to change the border of an element to YUV 196.5120, 0.2406, 16.2140 is called "border". The border property can be set on classes, ids or directly on the HTML element.

This example shows the color as border, it can be applied via the CSS property "border" or "border-color".

```
.border, #border, table{ border:4px solid rgb(215, 187, 197) }
```


If only the border color should be changed use the property border-color.

```
.border{ border-color:rgb(215, 187, 197) }
```

If you want to add a box shadow in that color use:

Here you see how a box with a 4 pixel rgb(215, 187, 197) colored shadow looks like.

```
.boxshadow{ -moz-box-shadow:4px 4px 4px  
4px rgb(215, 187, 197); -webkit-box-  
shadow:4px 4px 4px 4px rgb(215, 187, 197);  
box-shadow:4px 4px 4px 4px rgb(215, 187,  
197) }
```

Background

The CSS property to change the background color of an element to YUV 196.5120, 0.2406, 16.2140 is called "background". The background property can be set on classes, ids or directly on the HTML element.

```
.background, #background, body{  
background: rgb(215, 187, 197) }
```

If only the background color should be changed can be used:

```
.background{ background-color: rgb(215,  
187, 197) }
```

This example shows the color as background, it is applied via the CSS property "background".

To optimize and compress your CSS code, you can use our [online CSS compressor and optimizer](#) based on csstidy. If you want to create a linear or radial gradient as background or border, check our [CSS Gradient Generator](#).

Hey! You found this booklet interesting? Support Converting Colors with the new Membership Option!

The pro membership hides all ads, plus gives you double the colors in the color bucket, and more awesome pro features!

[Learn more, Memberships starting at \\$2.50/m!](#)

**Follow me
on Twitter!**

@ConvertingColor