

Converting Colors

YUV(196.7690, -6.2951,
12.4806)

Have a look what the booklet for
YUV(196.7690, -6.2951, 12.4806)
contains.

YUV(196.7690, -6.2951, 12.4806)	3
<i>Conversions</i>	4
<i>Details</i>	6
<i>Harmonies</i>	12
<i>Previews</i>	24
<i>Color Blindness Simulation</i>	28
<i>CSS Examples</i>	31

Color

**YUV(196.7690, -6.2951,
12.4806)**

Conversions

Conversions Part 1

Format	Color
Hex	D3C0B8
RGB	211, 192, 184
RGB Percent	83%, 75%, 72%
CMY	0.1725, 0.2471, 0.2784
CMYK	0.00, 0.09, 0.13, 0.17
HSL	18°, 23%, 77%
HSV	18°, 13%, 83%
XYZ	54.3653, 55.0088, 53.0998
YIQ	196.7690, 13.8920, 1.5400

Conversions

Conversions Part 2

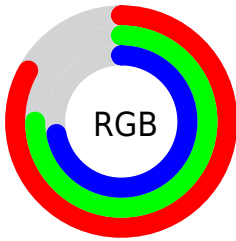
Format	Color
R _Y B	211, 195, 184
Decimal	13877432
CIE Lab	79.05, 5.36, 6.45
CIE LCh	79, 8.388, 50.238
Yxy	55.0088, 0.3346, 0.3386
Android (android.graphics.Color)	4292067512 (0xFFD3C0B8)
YUV	196.7690, -6.2951, 12.4806
Hunter-Lab	74.1680, 1.0471, 9.4695

Details

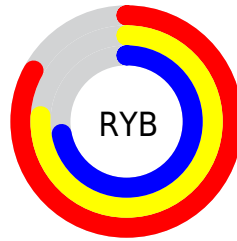
The YUV color $196.7690, -6.2951, 12.4806$ is a light color, and the websafe version is hex `CCCCCC`. A complement of this color would be $198.2310, 6.2951, -12.4806$, and the grayscale version is $197.0000, 0.0000, 0.0000$.

A 20% lighter version of the original color is $249.1810, -4.5262, 5.1033$, and $143.1710, -6.0003, 11.2510$ is the 20% darker color. If you saturate the color by 10%, you get $185.5700, -11.1270, 22.3021$, and if you desaturate by 10%, it is $207.9680, -1.4632, 2.6591$.

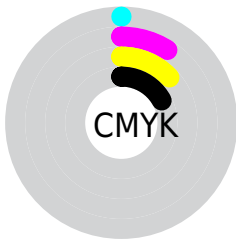
Distribution



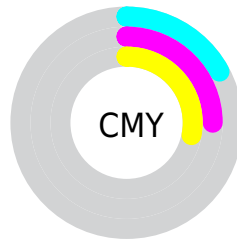
- Red (83%)
- Green (75%)
- Blue (72%)



- Red (83%)
- Yellow (76%)
- Blue (72%)



- Cyan (0%)
- Magenta (9%)
- Yellow (13%)
- Black (17%)



- Cyan (17%)
- Magenta (25%)
- Yellow (28%)

Brightness & Saturation Gradients

These gradients show how the YUV color 196.7690, -6.2951, 12.4806 changes by changing the brightness by 10 percent. The first figure shows a shift by +10% for each color and the second figure -10%.

Similar to the brightness gradients but the following saturation gradients show a change of the YUV color 196.7690, -6.2951, 12.4806 by changing the saturation by 10% instead.

■ 196.7690, -6.2951,
12.4806

■ 196.7690, -6.2951,
12.4806

255.0000, 0.0000,
0.0000

■ 169.4700, -6.1477,
11.8658

■ 249.1810, -4.5262,
5.1033

■ 143.1710, -6.0003,
11.2510

■ 117.2850, -5.5635,
11.1511

■ 92.9860, -5.4161,
10.5363

■ 68.8010, -4.8319,
9.8215

■ 46.5020, -4.6845,
9.2067

■ 25.7900, -4.8265,

8.0772

■ 0.8970, -0.4422,
1.8443

■ 0.0000, 0.0000,
0.0000

■ 196.7690, -6.2951,
12.4806

■ 196.7690, -6.2951,
12.4806

■ 185.5700,
-11.1270, 22.3021

■ 207.9680, -1.4632,
2.6591

■ 174.3710,
-15.9589, 32.1236

■ 219.1670, 3.3687,
-7.1625

■ 163.1720,
-20.7908, 41.9452

■ 230.3660, 8.2006,
-16.9840

■ 152.5600,
-25.9121, 51.2519

■ 239.4960, 7.6435,
-24.9910

■ 141.3610,
-30.7440, 61.0734

■ 241.8440, 6.4859,
-27.0502

■ 130.0480,
-36.0127, 70.9949

■ 118.8490,
-40.8446, 80.8164

■ 107.6500,
-45.6764, 90.6380

■ 100.0700,
-49.3345, 97.2856

Harmonies

Analogous

The Analogous color harmony consists of three colors that are next to each other on the color wheel.



197.5780, -3.2430, 13.5251



196.7690, -6.2951, 12.4806



195.8070, -7.2999, 8.0623

Triad

The Triadic color harmony groups three colors that are evenly spaced from another and form a triangle on the color wheel.



196.7690, -6.2951, 12.4806



193.2220, -0.1094, -11.5957



196.4110, 6.6994, -2.1144

Complementary

The Complementary color scheme is a pair of colors which are on the opposite of each other on the color wheel.



196.7690, -6.2951, 12.4806



198.2310, 6.2951, -12.4806

Split Complementary

Split-complementary colors differ from the complementary color scheme. The scheme consists of three colors, the original color and two neighbors of the complement color.



195.0080, 7.8841, -8.7770



196.7690, -6.2951, 12.4806



193.2370, 3.8272, -14.2398

Square

The Square scheme is like the rectangle color scheme, but the four colors are evenly spaced on the color wheel.



196.7690, -6.2951, 12.4806



193.9300, -3.9095, -6.0776



193.6330, 6.5899, -13.7101



197.1840, 4.3463, 5.9776

Rectangle

The Rectangle color scheme consists of four colors that form a rectangle on the color wheel.



196.7690, -6.2951, 12.4806



195.3720, -7.5784, 4.0588



193.6330, 6.5899, -13.7101



195.6280, 7.5784, -4.0588

Sweetspot

The Sweet Spot groups the original color and five complimentary colors.



196.7690, -6.2951, 12.4806



249.7510, -2.3422, 4.6034



194.2390, 4.3192, 14.6994



124.2670, -1.6106, 3.2738



0.0000, 0.0000, 0.0000



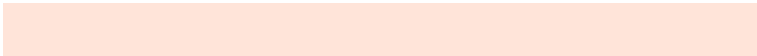
128.0000, 0.0000, 0.0000

Same Dimension

The Same Dimension uses a secret algorithm to generate beautiful new colors.



196.7690, -6.2951, 12.4806



234.8190, -8.7848, 17.6987



204.4000, -10.0572, 5.7882



99.0500, -2.4897, 5.2181



79.5820, -39.2339, 77.5426



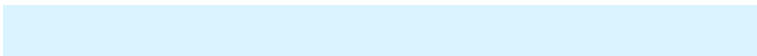
19.3030, -9.5164, 19.0283

Inverse Universe

The Inverse Universe completely reimagines the original color for something new.



198.2310, 6.2951, -12.4806



237.1810, 8.7848, -17.6987



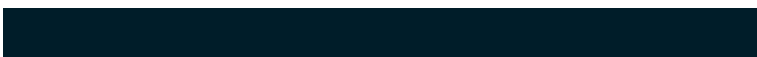
190.6000, 10.0572, -5.7882



99.3630, 2.7790, -4.7034



88.4180, 39.2339, -77.5426



21.6970, 9.5164, -19.0283

Previews

White Background



This preview shows how the YUV color 196.7690, -6.2951, 12.4806 looks on a white background.

Color Contrast Check

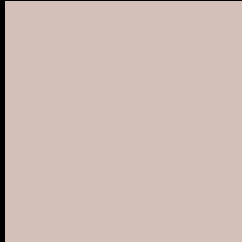
Large Text (above 18pt) WCAG AA × Fail

Any Text WCAG AA × Fail

Large Text (above 18pt) WCAG AAA × Fail

Any Text WCAG AAA × Fail

Black Background



This preview shows how the YUV color 196.7690, -6.2951, 12.4806 looks on a black background.

Color Contrast Check

Large Text (above 18pt) WCAG AA ✓ Pass

Any Text WCAG AA ✓ Pass

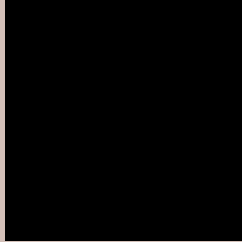
Large Text (above 18pt) WCAG AAA ✓ Pass

Any Text WCAG AAA ✓ Pass

If you want to check with other color combinations, try the [Color Contrast Checker](#).

YUV 196.7690, -6.2951, 12.4806

Background



This preview shows how black text looks on a background with the YUV color 196.7690, -6.2951, 12.4806.



This preview shows how white text looks on a background with the YUV color 196.7690, -6.2951,

Color Blindness Simulation

Color vision deficiency is a very complex topic, and I could not describe the different causes any better than Wikipedia does, so if you want to learn more, you should check out their [article about color blindness](#).

Dichromacy



Original Color

196.7690, -6.2951, 12.4806

Protanopia

196.0670, -4.9630, 5.2032

Deuteranopia

197.5140, -6.1694, 18.8432



Tritanopia

198.1850, 2.8668, 13.8698

Trichromacy



Original Color

196.7690, -6.2951, 12.4806

Protanomaly

196.2630, -5.5527, 7.6623

Deuteranomaly

197.2040, -6.0166, 16.4841

Tritanomaly

197.6750, -0.3328, 13.4400

Monochromacy



Original Color

196.7690, -6.2951, 12.4806

Achromatopsia

197.0000, 0.0000, 0.0000

Achromatomaly

196.7510, -2.3422, 4.6034

CSS Examples

Text

The CSS property to change the color of the text to YUV 196.7690, -6.2951, 12.4806 is called "color". The color property can be set on classes, ids or directly on the HTML element.

This example shows how text in the color `rgb(211, 192, 184)` looks like.

```
.text, #text, p{  
    color:rgb(211, 192, 184)  
}
```

If you want to add a text shadow in that color use the text-shadow property, you can generate a text shadow directly with our [CSS Text Shadow Generator](#).

Here you see how black text with a 4 pixel rgb(211, 192, 184) colored shadow looks like.

```
.shadow{ text-shadow: 4px 4px 2px rgb(211, 192, 184) }
```

Border

The CSS property to change the border of an element to YUV 196.7690, -6.2951, 12.4806 is called "border". The border property can be set on classes, ids or directly on the HTML element.

This example shows the color as border, it can be applied via the CSS property "border" or "border-color".

```
.border, #border, table{ border:4px solid rgb(211, 192, 184) }
```


If only the border color should be changed use the property `border-color`.

```
.border{ border-color:rgb(211, 192, 184) }
```

If you want to add a box shadow in that color use:

Here you see how a box with a 4 pixel `rgb(211, 192, 184)` colored shadow looks like.

```
.boxshadow{ -moz-box-shadow:4px 4px 4px  
4px rgb(211, 192, 184); -webkit-box-  
shadow:4px 4px 4px 4px rgb(211, 192, 184);  
box-shadow:4px 4px 4px 4px rgb(211, 192,  
184) }
```

Background

The CSS property to change the background color of an element to YUV 196.7690, -6.2951, 12.4806 is called "background". The background property can be set on classes, ids or directly on the HTML element.

```
.background, #background, body{  
background: rgb(211, 192, 184) }
```

If only the background color should be changed can be used:

```
.background{ background-color: rgb(211,  
192, 184) }
```

This example shows the color as background, it is applied via the CSS property "background".

To optimize and compress your CSS code, you can use our [online CSS compressor and optimizer](#) based on csstidy. If you want to create a linear or radial gradient as background or border, check our [CSS Gradient Generator](#).

Hey! You found this booklet interesting? Support Converting Colors with the new Membership Option!

The pro membership hides all ads, plus gives you double the colors in the color bucket, and more awesome pro features!

[Learn more, Memberships starting at \\$2.50/m!](#)

**Follow me
on Twitter!**

@ConvertingColor