

Converting Colors

YUV(196.8690, -11.2744,
22.9169)

Have a look what the booklet for
YUV(196.8690, -11.2744, 22.9169)
contains.

YUV(196.8690, -11.2744, 22.9169)	3
<i>Conversions</i>	4
<i>Details</i>	6
<i>Harmonies</i>	12
<i>Previews</i>	24
<i>Color Blindness Simulation</i>	28
<i>CSS Examples</i>	31

Color

**YUV(196.8690, -11.2744,
22.9169)**

Conversions

Conversions Part 1

Format	Color
Hex	DFBCAE
RGB	223, 188, 174
RGB Percent	87%, 74%, 68%
CMY	0.1255, 0.2627, 0.3176
CMYK	0.00, 0.16, 0.22, 0.13
HSL	17°, 43%, 78%
HSV	17°, 22%, 87%
XYZ	56.0546, 54.7104, 47.6502
YIQ	196.8690, 25.3540, 3.0660

Conversions

Conversions Part 2

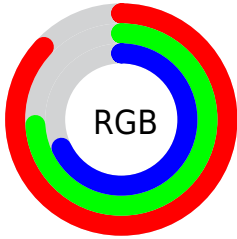
Format	Color
R _{YB}	223, 194, 174
Decimal	14662830
CIE Lab	78.87, 10.36, 11.73
CIE LCh	79, 15.653, 48.547
Yxy	54.7104, 0.3538, 0.3454
Android (android.graphics.Color)	4292852910 (0xFFDFBCAE)
YUV	196.8690, -11.2744, 22.9169
Hunter-Lab	73.9665, 5.8328, 13.5812

Details

The YUV color $196.8690, -11.2744, 22.9169$ is a light color, and the websafe version is hex FFCCCC . A complement of this color would be $200.1310, 11.2744, -22.9169$, and the grayscale version is $197.0000, 0.0000, 0.0000$.

A 20% lighter version of the original color is $245.5790, -8.1734, 8.2622$, and $143.0860, -10.3954, 20.9726$ is the 20% darker color. If you saturate the color by 10%, you get $184.9690, -16.2537, 33.3532$, and if you desaturate by 10%, it is $208.7690, -6.2951, 12.4806$.

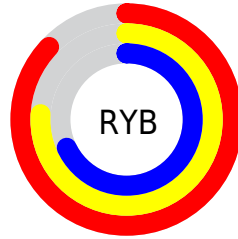
Distribution



Red (87%)

Green (74%)

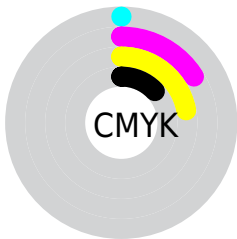
Blue (68%)



Red (87%)

Yellow (76%)

Blue (68%)

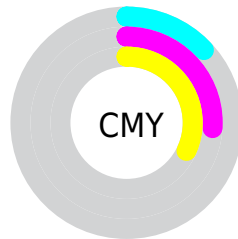


Cyan (0%)

Magenta (16%)

Yellow (22%)

Black (13%)



Cyan (13%)

Magenta (26%)

Yellow (32%)

Brightness & Saturation Gradients

These gradients show how the YUV color 196.8690, -11.2744, 22.9169 changes by changing the brightness by 10 percent. The first figure shows a shift by +10% for each color and the second figure -10%.

Similar to the brightness gradients but the following saturation gradients show a change of the YUV color 196.8690, -11.2744, 22.9169 by changing the saturation by 10% instead.

■ 196.8690,
-11.2744, 22.9169

■ 196.8690,
-11.2744, 22.9169

255.0000, 0.0000,
0.0000

■ 169.5700,
-11.1270, 22.3021

■ 245.5790, -8.1734,
8.2622

■ 143.0860,
-10.3954, 20.9726

■ 116.9010, -9.8112,
20.2578

■ 92.3030, -9.5164,
19.0283

■ 68.7050, -9.2216,
17.7987

■ 46.2210, -8.4900,
16.4692

■ 24.4660, -10.0897,

16.2543

■ 4.1860, -2.0637,
8.6069

■ 0.0000, 0.0000,
0.0000

■ 196.8690,
-11.2744, 22.9169

■ 196.8690,
-11.2744, 22.9169

■ 184.9690,
-16.2537, 33.3532

■ 208.7690, -6.2951,
12.4806

■ 172.9550,
-21.6698, 43.8895

■ 220.7830, -0.8790,
1.9443

■ 161.0550,
-26.6491, 54.3258

■ 232.6830, 4.1003,
-8.4920

■ 149.1550,
-31.6284, 64.7621

■ 243.6710, 5.5852,
-18.1285

■ 137.2550,
-36.6077, 75.1984

■ 245.4320, 4.7170,
-19.6729

■ 125.2410,
-42.0238, 85.7346

■ 113.9280,
-47.2925, 95.6561

■ 104.2450,
-51.3928, 104.1481

Harmonies

Analogous

The Analogous color harmony consists of three colors that are next to each other on the color wheel.



198.0740, -5.4595, 24.4911



196.8690, -11.2744, 22.9169



195.1300, -13.8681, 14.7950

Triad

The Triadic color harmony groups three colors that are evenly spaced from another and form a triangle on the color wheel.



196.8690, -11.2744, 22.9169



190.3410, -0.6611, -21.3471



195.8220, 13.3988, -4.2289

Complementary

The Complementary color scheme is a pair of colors which are on the opposite of each other on the color wheel.



196.8690, -11.2744, 22.9169



200.1310, 11.2744, -22.9169

Split Complementary

Split-complementary colors differ from the complementary color scheme. The scheme consists of three colors, the original color and two neighbors of the complement color.



193.3750, 14.6051, -17.8689



196.8690, -11.2744, 22.9169



190.2460, 6.7807, -28.2797

Square

The Square scheme is like the rectangle color scheme, but the four colors are evenly spaced on the color wheel.



196.8690, -11.2744, 22.9169



191.8710, -7.8244, -10.4109



191.1520, 12.7431, -27.3203



197.9440, 8.4086, 9.6961

Rectangle

The Rectangle color scheme consists of four colors that form a rectangle on the color wheel.



196.8690, -11.2744, 22.9169



194.7870, -13.6990, 7.2028



191.1520, 12.7431, -27.3203



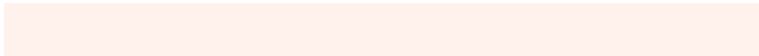
195.3160, 14.1412, -9.0471

Sweetspot

The Sweet Spot groups the original color and five complimentary colors.



196.8690, -11.2744, 22.9169



245.3170, -4.1003, 8.4920



192.6410, 8.0650, 26.6248



122.0500, -2.4896, 5.2182



0.0000, 0.0000, 0.0000



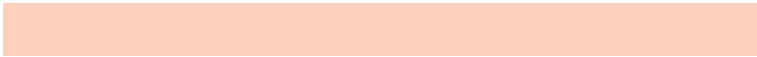
128.0000, 0.0000, 0.0000

Same Dimension

The Same Dimension uses a secret algorithm to generate beautiful new colors.



196.8690, -11.2744, 22.9169



219.8870, -15.2273, 30.7941



210.9570, -18.2198, 10.5617



106.0500, -2.4896, 5.2182



81.9740, -40.4132, 82.4608



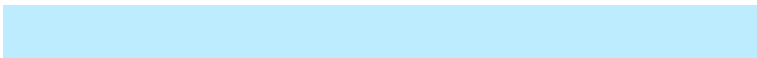
22.5700, -11.1270, 22.3021

Inverse Universe

The Inverse Universe completely reimagines the original color for something new.



200.1310, 11.2744, -22.9169



224.1130, 15.2273, -30.7941



186.0430, 18.2198, -10.5617



106.9500, 2.4897, -5.2181



94.0260, 40.4132, -82.4608



26.0170, 10.8376, -22.8169

Previews

White Background



This preview shows how the YUV color 196.8690, -11.2744, 22.9169 looks on a white background.

Color Contrast Check

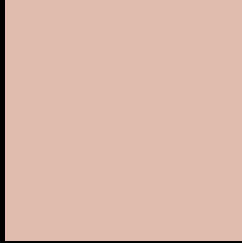
Large Text (above 18pt) WCAG AA × Fail

Any Text WCAG AA × Fail

Large Text (above 18pt) WCAG AAA × Fail

Any Text WCAG AAA × Fail

Black Background



This preview shows how the YUV color 196.8690, -11.2744, 22.9169 looks on a black background.

Color Contrast Check

Large Text (above 18pt) WCAG AA ✓ Pass

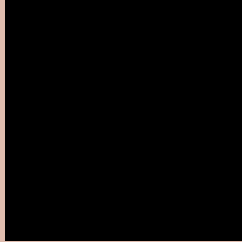
Any Text WCAG AA ✓ Pass

Large Text (above 18pt) WCAG AAA ✓ Pass

Any Text WCAG AAA ✓ Pass

If you want to check with other color combinations, try the [Color Contrast Checker](#).

YUV 196.8690, -11.2744, 22.9169 Background



This preview shows how black text looks on a background with the YUV color 196.8690, -11.2744, 22.9169.



This preview shows how white text looks on a background with the YUV color 196.8690, -11.2744, 22.9169.

Color Blindness Simulation

Color vision deficiency is a very complex topic, and I could not describe the different causes any better than Wikipedia does, so if you want to learn more, you should check out their [article about color blindness](#).

Dichromacy



Original Color

196.8690, -11.2744, 22.9169

Protanopia

195.4540, -8.6048, 6.6178

Deuteranopia

196.5700, -11.1270, 22.3021



Tritanopia

198.2680, 0.3609, 24.3210

Trichromacy



Original Color

196.8690, -11.2744, 22.9169

Protanomaly

195.6720, -9.2053, 12.5657

Deuteranomaly

196.5700, -11.1270, 22.3021

Tritanomaly

197.5300, -3.7123, 24.0912

Monochromacy



Original Color

196.8690, -11.2744, 22.9169

Achromatopsia

197.0000, 0.0000, 0.0000

Achromatomaly

197.0180, -3.9529, 7.8772

CSS Examples

Text

The CSS property to change the color of the text to YUV 196.8690, -11.2744, 22.9169 is called "color". The color property can be set on classes, ids or directly on the HTML element.

This example shows how text in the color `rgb(223, 188, 174)` looks like.

```
.text, #text, p{  
    color:rgb(223, 188, 174)  
}
```

If you want to add a text shadow in that color use the text-shadow property, you can generate a text shadow directly with our [CSS Text Shadow Generator](#).

Here you see how black text with a 4 pixel rgb(223, 188, 174) colored shadow looks like.

```
.shadow{ text-shadow: 4px 4px 2px rgb(223, 188, 174) }
```

Border

The CSS property to change the border of an element to YUV 196.8690, -11.2744, 22.9169 is called "border".

The border property can be set on classes, ids or directly on the HTML element.

This example shows the color as border, it can be applied via the CSS property "border" or "border-color".

```
.border, #border, table{ border:4px solid rgb(223, 188, 174) }
```


If only the border color should be changed use the property `border-color`.

```
.border{ border-color:rgb(223, 188, 174) }
```

If you want to add a box shadow in that color use:

Here you see how a box with a 4 pixel `rgb(223, 188, 174)` colored shadow looks like.

```
.boxshadow{ -moz-box-shadow:4px 4px 4px  
4px rgb(223, 188, 174); -webkit-box-  
shadow:4px 4px 4px 4px rgb(223, 188, 174);  
box-shadow:4px 4px 4px 4px rgb(223, 188,  
174) }
```

Background

The CSS property to change the background color of an element to YUV 196.8690, -11.2744, 22.9169 is called "background". The background property can be set on classes, ids or directly on the HTML element.

```
.background, #background, body{  
background: rgb(223, 188, 174) }
```

If only the background color should be changed can be used:

```
.background{ background-color: rgb(223,  
188, 174) }
```

This example shows the color as background, it is applied via the CSS property "background".

To optimize and compress your CSS code, you can use our [online CSS compressor and optimizer](#) based on csstidy. If you want to create a linear or radial gradient as background or border, check our [CSS Gradient Generator](#).

Hey! You found this booklet interesting? Support Converting Colors with the new Membership Option!

The pro membership hides all ads, plus gives you double the colors in the color bucket, and more awesome pro features!

[Learn more, Memberships starting at \\$2.50/m!](#)

**Follow me
on Twitter!**

@ConvertingColor