

# Converting Colors

YUV(196.9770, -8.3697,  
24.5762)

Have a look what the booklet for  
YUV(196.9770, -8.3697, 24.5762)  
contains.

<b>YUV(196.9770, -8.3697, 24.5762)</b> .....	3
<b><i>Conversions</i></b> .....	4
<b><i>Details</i></b> .....	6
<b><i>Harmonies</i></b> .....	12
<b><i>Previews</i></b> .....	24
<b><i>Color Blindness Simulation</i></b> .....	28
<b><i>CSS Examples</i></b> .....	31

# Color

**YUV(196.9770, -8.3697,  
24.5762)**

# Conversions

## Conversions Part 1

Format	Color
Hex	E1BAB4
RGB	225, 186, 180
RGB Percent	88%, 73%, 71%
CMY	0.1176, 0.2706, 0.2941
CMYK	0.00, 0.17, 0.20, 0.12
HSL	8°, 43%, 79%
HSV	8°, 20%, 88%
XYZ	56.8485, 54.4207, 50.6880
YIQ	196.9770, 25.1700, 6.4020

# Conversions

## Conversions Part 2

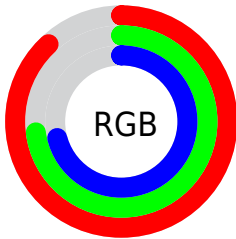
<b>Format</b>	<b>Color</b>
R <sub>Y</sub> B	225, 187, 180
Decimal	14793396
CIE Lab	78.71, 13.06, 8.28
CIE LCh	79, 15.461, 32.390
Yxy	54.4207, 0.3510, 0.3360
Android (android.graphics.Color)	4292983476 (0xFFE1BAB4)
YUV	196.9770, -8.3697, 24.5762
Hunter-Lab	73.7704, 8.4565, 10.9008

# Details

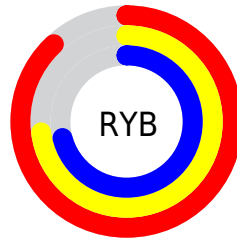
The YUV color  $196.9770, -8.3697, 24.5762$  is a light color, and the websafe version is hex  $\text{FFCCCC}$ . A complement of this color would be  $208.0230, 8.3697, -24.5762$ , and the grayscale version is  $197.0000, 0.0000, 0.0000$ .

A 20% lighter version of the original color is  $245.2030, -4.5371, 8.5920$ , and  $143.0800, -7.9274, 22.7318$  is the 20% darker color. If you saturate the color by 10%, you get  $183.3160, -12.4808, 36.5569$ , and if you desaturate by 10%, it is  $211.3390, -4.1111, 11.9807$ .

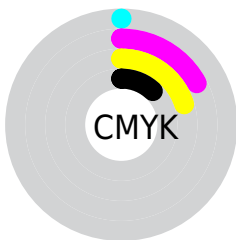
# Distribution



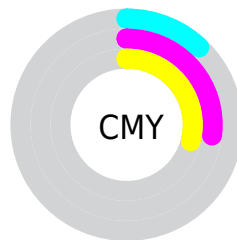
- Red (88%)
- Green (73%)
- Blue (71%)



- Red (88%)
- Yellow (73%)
- Blue (71%)



- Cyan (0%)
- Magenta (17%)
- Yellow (20%)
- Black (12%)



- Cyan (12%)
- Magenta (27%)
- Yellow (29%)

# Brightness & Saturation Gradients

These gradients show how the YUV color 196.9770, -8.3697, 24.5762 changes by changing the brightness by 10 percent. The first figure shows a shift by +10% for each color and the second figure -10%.

Similar to the brightness gradients but the following saturation gradients show a change of the YUV color 196.9770, -8.3697, 24.5762 by changing the saturation by 10% instead.



■ 196.9770, -8.3697,  
24.5762

■ 196.9770, -8.3697,  
24.5762

255.0000, 0.0000,  
0.0000

■ 169.6780, -8.2223,  
23.9614

■ 245.2030, -4.5371,  
8.5920

■ 143.0800, -7.9274,  
22.7318

■ 116.8950, -7.3432,  
22.0171

■ 92.2970, -7.0484,  
20.7875

■ 68.6990, -6.7536,  
19.5580

■ 46.2150, -6.0220,  
18.2284

■ 24.5030, -6.1640,

17.0989

■ 5.3820, -2.6533,  
11.0660

■ 0.0000, 0.0000,  
0.0000

■ 196.9770, -8.3697,  
24.5762

■ 196.9770, -8.3697,  
24.5762

■ 183.3160,  
-12.4808, 36.5569

■ 211.3390, -4.1111,  
11.9807

■ 168.9540,  
-16.7393, 49.1523

■ 225.0000, 0.0000,  
0.0000

■ 154.7060,  
-20.5611, 61.6478

■ 239.3620, 4.2585,  
-12.5955

■ 140.9310,  
-25.1090, 73.7285

■ 246.0300, 4.4222,  
-18.4433

■ 126.6830,  
-28.9307, 86.2240

■ 112.9080,  
-33.4786, 98.3047

■ 98.5460, -37.7372,  
110.9002

■ 84.8850, -41.8483,  
122.8809

# Harmonies

## Analogous

The Analogous color harmony consists of three colors that are next to each other on the color wheel.



197.6870, -1.8177, 23.0765



196.9770, -8.3697, 24.5762



195.5050, -12.5740, 19.7281

# Triad

The Triadic color harmony groups three colors that are evenly spaced from another and form a triangle on the color wheel.



196.9770, -8.3697, 24.5762



190.9350, -4.8980, -15.7290



194.5930, 14.0047, -11.9211

# Complementary

The Complementary color scheme is a pair of colors which are on the opposite of each other on the color wheel.



196.9770, -8.3697, 24.5762



208.0230, 8.3697, -24.5762

# Split Complementary

Split-complementary colors differ from the complementary color scheme. The scheme consists of three colors, the original color and two neighbors of the complement color.



191.8150, 13.8952, -23.5168



196.9770, -8.3697, 24.5762



189.5300, 2.6967, -25.0208

# Square

The Square scheme is like the rectangle color scheme, but the four colors are evenly spaced on the color wheel.



196.9770, -8.3697, 24.5762



192.7040, -11.1931, -3.2484



190.3430, 9.6909, -28.3648



196.5840, 11.0511, 2.1188



# Rectangle

The Rectangle color scheme consists of four colors that form a rectangle on the color wheel.



196.9770, -8.3697, 24.5762



195.1190, -13.8627, 13.0506



190.3430, 9.6909, -28.3648



193.3860, 14.5997, -16.1245

# Sweetspot

The Sweet Spot groups the original color and five complimentary colors.



196.9770, -8.3697, 24.5762



245.6590, -2.7899, 8.1921



197.9010, 10.4018, 23.7658



122.2780, -1.6161, 5.0182



0.0000, 0.0000, 0.0000



128.0000, 0.0000, 0.0000



# Same Dimension

The Same Dimension uses a secret algorithm to generate beautiful new colors.



196.9770, -8.3697, 24.5762



216.9350, -11.3070, 33.3830



209.8910, -14.7363, 13.2506



104.8760, -1.9109, 6.2477



66.1250, -32.5996, 96.3604



17.8740, -8.8119, 26.4205

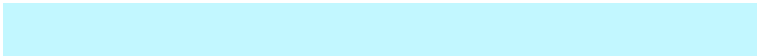


# Inverse Universe

The Inverse Universe completely reimagines the original color for something new.



208.0230, 8.3697, -24.5762



232.0650, 11.3070, -33.3830



195.1090, 14.7363, -13.2506



108.1240, 1.9109, -6.2477



109.2880, 32.8890, -95.8456



30.1260, 8.8119, -26.4205



# Previews

## White Background



This preview shows how the YUV color 196.9770, -8.3697, 24.5762 looks on a white background.

## Color Contrast Check

Large Text (above 18pt) WCAG AA × Fail

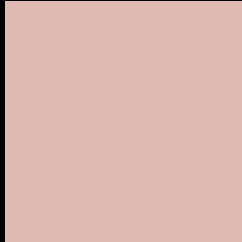
Any Text WCAG AA × Fail

Large Text (above 18pt) WCAG AAA × Fail

Any Text WCAG AAA × Fail



# Black Background



This preview shows how the YUV color 196.9770, -8.3697, 24.5762 looks on a black background.

## Color Contrast Check

Large Text (above 18pt) WCAG AA ✓ Pass

Any Text WCAG AA ✓ Pass

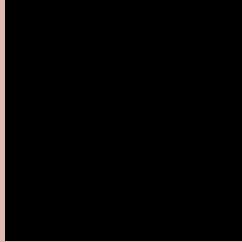
Large Text (above 18pt) WCAG AAA ✓ Pass

Any Text WCAG AAA ✓ Pass

If you want to check with other color combinations, try the [Color Contrast Checker](#).

# YUV 196.9770, -8.3697, 24.5762

## Background



This preview shows how black text looks on a background with the YUV color 196.9770, -8.3697, 24.5762.



This preview shows how white text looks on a background with the YUV color 196.9770, -8.3697,

24.5762.

# Color Blindness Simulation

Color vision deficiency is a very complex topic, and I could not describe the different causes any better than Wikipedia does, so if you want to learn more, you should check out their [article about color blindness](#).

## Dichromacy



### Original Color

196.9770, -8.3697, 24.5762

### Protanopia

194.9530, -5.3998, 5.3032

### Deuteranopia

196.6560, -8.2114, 20.4727



## Tritanopia

197.8660, 0.0661, 25.5505

# Trichromacy



## Original Color

196.9770, -8.3697, 24.5762

## Protanomaly

195.7690, -6.2951, 12.4806

## Deuteranomaly

196.6670, -8.2168, 22.2170

## Tritanomaly

197.3560, -3.1335, 25.1208

# Monochromacy



## Original Color

196.9770, -8.3697, 24.5762

## Achromatopsia

197.0000, 0.0000, 0.0000

## Achromatomaly

196.9580, -2.9373, 8.8068

# CSS Examples

## Text

The CSS property to change the color of the text to YUV 196.9770, -8.3697, 24.5762 is called "color". The color property can be set on classes, ids or directly on the HTML element.

This example shows how text in the color `rgb(225, 186, 180)` looks like.

```
.text, #text, p{  
    color:rgb(225, 186, 180)  
}
```

If you want to add a text shadow in that color use the text-shadow property, you can generate a text shadow directly with our [CSS Text Shadow Generator](#).

Here you see how black text with a 4 pixel rgb(225, 186, 180) colored shadow looks like.

```
.shadow{ text-shadow: 4px 4px 2px rgb(225, 186, 180) }
```

## Border

The CSS property to change the border of an element to YUV 196.9770, -8.3697, 24.5762 is called "border". The border property can be set on classes, ids or directly on the HTML element.

This example shows the color as border, it can be applied via the CSS property "border" or "border-color".

```
.border, #border, table{ border:4px solid rgb(225, 186, 180) }
```



If only the border color should be changed use the property `border-color`.

```
.border{ border-color:rgb(225, 186, 180) }
```

If you want to add a box shadow in that color use:

Here you see how a box with a 4 pixel `rgb(225, 186, 180)` colored shadow looks like.

```
.boxshadow{ -moz-box-shadow:4px 4px 4px  
4px rgb(225, 186, 180); -webkit-box-  
shadow:4px 4px 4px 4px rgb(225, 186, 180);  
box-shadow:4px 4px 4px 4px rgb(225, 186,  
180) }
```

# Background

The CSS property to change the background color of an element to YUV 196.9770, -8.3697, 24.5762 is called "background". The background property can be set on classes, ids or directly on the HTML element.

```
.background, #background, body{  
background: rgb(225, 186, 180) }
```

If only the background color should be changed can be used:

```
.background{ background-color: rgb(225,  
186, 180) }
```

This example shows the color as background, it is applied via the CSS property "background".

To optimize and compress your CSS code, you can use our [online CSS compressor and optimizer](#) based on csstidy. If you want to create a linear or radial gradient as background or border, check our [CSS Gradient Generator](#).

Hey! You found this booklet interesting? Support Converting Colors with the new Membership Option!

The pro membership hides all ads, plus gives you double the colors in the color bucket, and more awesome pro features!

**[Learn more, Memberships starting at \\$2.50/m!](#)**

**Follow me  
on Twitter!**

@ConvertingColor