

Converting Colors

YUV(197.0530, -10.3791,
15.7395)

Have a look what the booklet for
YUV(197.0530, -10.3791, 15.7395)
contains.

YUV(197.0530, -10.3791, 15.7395)	3
<i>Conversions</i>	4
<i>Details</i>	6
<i>Harmonies</i>	12
<i>Previews</i>	24
<i>Color Blindness Simulation</i>	28
<i>CSS Examples</i>	31

Color

**YUV(197.0530, -10.3791,
15.7395)**

Conversions

Conversions Part 1

Format	Color
Hex	D7C0B0
RGB	215, 192, 176
RGB Percent	84%, 75%, 69%
CMY	0.1569, 0.2471, 0.3098
CMYK	0.00, 0.11, 0.18, 0.16
HSL	25°, 33%, 77%
HSV	25°, 18%, 84%
XYZ	54.7104, 55.2809, 48.8610
YIQ	197.0530, 18.8440, -0.1000

Conversions

Conversions Part 2

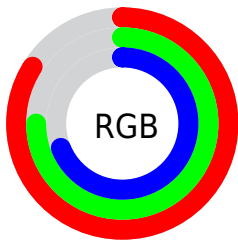
Format	Color
R _Y B	215, 203, 176
Decimal	14139568
CIE Lab	79.20, 5.57, 11.02
CIE LCh	79, 12.349, 63.205
Yxy	55.2809, 0.3444, 0.3480
Android (android.graphics.Color)	4292329648 (0xFFD7C0B0)
YUV	197.0530, -10.3791, 15.7395
Hunter-Lab	74.3512, 1.2327, 13.0824

Details

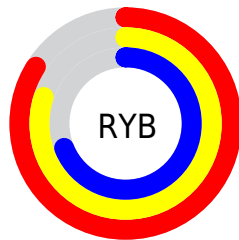
The YUV color $197.0530, -10.3791, 15.7395$ is a light color, and the websafe version is hex `CCCCCC`. A complement of this color would be $193.9470, 10.3791, -15.7395$, and the grayscale version is $197.0000, 0.0000, 0.0000$.

A 20% lighter version of the original color is $248.2690, -8.0206, 5.9031$, and $143.5690, -9.6475, 14.4100$ is the 20% darker color. If you saturate the color by 10%, you get $187.0280, -15.7898, 24.5314$, and if you desaturate by 10%, it is $207.1920, -4.5317, 6.8476$.

Distribution



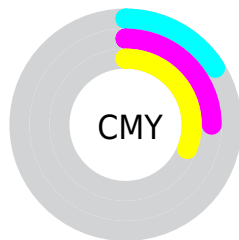
- Red (84%)
- Green (75%)
- Blue (69%)



- Red (84%)
- Yellow (80%)
- Blue (69%)



- Cyan (0%)
- Magenta (11%)
- Yellow (18%)
- Black (16%)



- Cyan (16%)
- Magenta (25%)
- Yellow (31%)

Brightness & Saturation Gradients

These gradients show how the YUV color 197.0530, -10.3791, 15.7395 changes by changing the brightness by 10 percent. The first figure shows a shift by +10% for each color and the second figure -10%.

Similar to the brightness gradients but the following saturation gradients show a change of the YUV color 197.0530, -10.3791, 15.7395 by changing the saturation by 10% instead.

■ 197.0530,
-10.3791, 15.7395

■ 197.0530,
-10.3791, 15.7395

255.0000, 0.0000,
0.0000

■ 169.7540,
-10.2317, 15.1247

■ 248.2690, -8.0206,
5.9031

■ 143.5690, -9.6475,
14.4100

■ 117.3840, -9.0633,
13.6952

■ 93.0850, -8.9159,
13.0805

■ 68.9000, -8.3317,
12.3657

■ 46.7150, -7.7475,
11.6509

■ 25.6610, -9.1999,

10.8213

■ 1.7940, -0.8844,
3.6887

■ 0.0000, 0.0000,
0.0000

■ 197.0530,
-10.3791, 15.7395

■ 197.0530,
-10.3791, 15.7395

■ 187.0280,
-15.7898, 24.5314

■ 207.1920, -4.5317,
6.8476

■ 177.4760,
-21.9267, 32.9085

■ 216.6300, 1.1684,
-1.4295

■ 167.4510,
-27.3373, 41.7005

■ 226.7690, 7.0159,
-10.3214

■ 157.3120,
-33.1848, 50.5924

■ 235.9960, 9.3690,
-18.4135

■ 147.8740,
-38.8849, 58.8695

■ 243.0400, 5.8963,
-24.5911

■ 137.7350,
-44.7324, 67.7614

■ 127.7100,
-50.1430, 76.5533

■ 118.1580,
-56.2799, 84.9304

■ 115.9410,
-57.1589, 86.8747

Harmonies

Analogous

The Analogous color harmony consists of three colors that are next to each other on the color wheel.



197.9980, -6.9010, 20.1728



197.0530, -10.3791, 15.7395



195.7700, -11.2256, 7.2177

Triad

The Triadic color harmony groups three colors that are evenly spaced from another and form a triangle on the color wheel.



197.0530, -10.3791, 15.7395



192.4490, 2.2436, -19.6878



197.6010, 8.5777, 2.1039

Complementary

The Complementary color scheme is a pair of colors which are on the opposite of each other on the color wheel.



197.0530, -10.3791, 15.7395



193.9470, 10.3791, -15.7395

Split Complementary

Split-complementary colors differ from the complementary color scheme. The scheme consists of three colors, the original color and two neighbors of the complement color.



196.2190, 11.2310, -8.9621



197.0530, -10.3791, 15.7395



192.2190, 7.7800, -22.1171

Square

The Square scheme is like the rectangle color scheme, but the four colors are evenly spaced on the color wheel.



197.0530, -10.3791, 15.7395



193.1850, -4.0352, -12.4402



193.7510, 10.9688, -18.1986



198.8150, 4.0352, 12.4402

Rectangle

The Rectangle color scheme consists of four colors that form a rectangle on the color wheel.



197.0530, -10.3791, 15.7395



194.7800, -9.7515, 1.0699



193.7510, 10.9688, -18.1986



196.9210, 9.8989, -1.6847

Sweetspot

The Sweet Spot groups the original color and five complimentary colors.



197.0530, -10.3791, 15.7395



248.8220, -3.3632, 5.4181



190.2830, 4.2975, 21.6768



124.1530, -2.0474, 3.3738



0.0000, 0.0000, 0.0000



128.0000, 0.0000, 0.0000

Same Dimension

The Same Dimension uses a secret algorithm to generate beautiful new colors.



197.0530, -10.3791, 15.7395



229.2450, -14.9108, 22.5871



208.2060, -15.8776, 5.9583



102.2240, -3.0684, 4.1886



92.2190, -45.4640, 69.0909



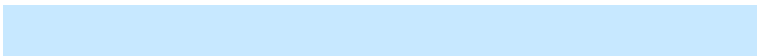
23.4230, -11.5475, 17.1690

Inverse Universe

The Inverse Universe completely reimagines the original color for something new.



193.9470, 10.3791, -15.7395



224.7550, 14.9108, -22.5871



182.7940, 15.8776, -5.9583



101.3630, 2.7790, -4.7034



78.7810, 45.4640, -69.0909



20.1640, 11.2581, -17.6838

Previews

White Background



This preview shows how the YUV color 197.0530, -10.3791, 15.7395 looks on a white background.

Color Contrast Check

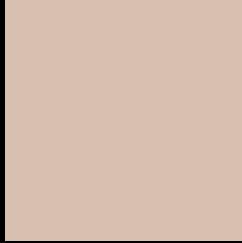
Large Text (above 18pt) WCAG AA × Fail

Any Text WCAG AA × Fail

Large Text (above 18pt) WCAG AAA × Fail

Any Text WCAG AAA × Fail

Black Background



This preview shows how the YUV color 197.0530, -10.3791, 15.7395 looks on a black background.

Color Contrast Check

Large Text (above 18pt) WCAG AA ✓ Pass

Any Text WCAG AA ✓ Pass

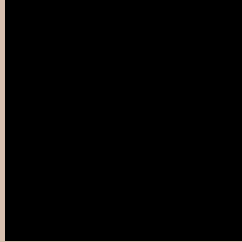
Large Text (above 18pt) WCAG AAA ✓ Pass

Any Text WCAG AAA ✓ Pass

If you want to check with other color combinations, try the [Color Contrast Checker](#).

YUV 197.0530, -10.3791, 15.7395

Background



This preview shows how black text looks on a background with the YUV color 197.0530, -10.3791, 15.7395.



This preview shows how white text looks on a background with the YUV color 197.0530, -10.3791, 15.7395.

Color Blindness Simulation

Color vision deficiency is a very complex topic, and I could not describe the different causes any better than Wikipedia does, so if you want to learn more, you should check out their [article about color blindness](#).

Dichromacy



Original Color

197.0530, -10.3791, 15.7395

Protanopia

196.3400, -9.0416, 6.7178

Deuteranopia

197.4990, -10.1060, 21.4874



Tritanopia

198.6800, 2.1298, 16.9436

Trichromacy



Original Color

197.0530, -10.3791, 15.7395

Protanomaly

196.8350, -9.7787, 9.7917

Deuteranomaly

197.1890, -9.9532, 19.1282

Tritanomaly

197.8280, -2.3802, 16.8138

Monochromacy



Original Color

197.0530, -10.3791, 15.7395

Achromatopsia

197.0000, 0.0000, 0.0000

Achromatomaly

197.0070, -3.9475, 6.1329

CSS Examples

Text

The CSS property to change the color of the text to YUV 197.0530, -10.3791, 15.7395 is called "color". The color property can be set on classes, ids or directly on the HTML element.

This example shows how text in the color `rgb(215, 192, 176)` looks like.

```
.text, #text, p{  
    color:rgb(215, 192, 176)  
}
```

If you want to add a text shadow in that color use the text-shadow property, you can generate a text shadow directly with our [CSS Text Shadow Generator](#).

Here you see how black text with a 4 pixel rgb(215, 192, 176) colored shadow looks like.

```
.shadow{ text-shadow: 4px 4px 2px rgb(215, 192, 176) }
```

Border

The CSS property to change the border of an element to YUV 197.0530, -10.3791, 15.7395 is called "border".

The border property can be set on classes, ids or directly on the HTML element.

This example shows the color as border, it can be applied via the CSS property "border" or "border-color".

```
.border, #border, table{ border:4px solid rgb(215, 192, 176) }
```


If only the border color should be changed use the property `border-color`.

```
.border{ border-color:rgb(215, 192, 176) }
```

If you want to add a box shadow in that color use:

Here you see how a box with a 4 pixel `rgb(215, 192, 176)` colored shadow looks like.

```
.boxshadow{ -moz-box-shadow:4px 4px 4px  
4px rgb(215, 192, 176); -webkit-box-  
shadow:4px 4px 4px 4px rgb(215, 192, 176);  
box-shadow:4px 4px 4px 4px rgb(215, 192,  
176) }
```

Background

The CSS property to change the background color of an element to YUV 197.0530, -10.3791, 15.7395 is called "background". The background property can be set on classes, ids or directly on the HTML element.

```
.background, #background, body{  
background: rgb(215, 192, 176) }
```

If only the background color should be changed can be used:

```
.background{ background-color: rgb(215,  
192, 176) }
```

This example shows the color as background, it is applied via the CSS property "background".

To optimize and compress your CSS code, you can use our [online CSS compressor and optimizer](#) based on csstidy. If you want to create a linear or radial gradient as background or border, check our [CSS Gradient Generator](#).

Hey! You found this booklet interesting? Support Converting Colors with the new Membership Option!

The pro membership hides all ads, plus gives you double the colors in the color bucket, and more awesome pro features!

[Learn more, Memberships starting at \\$2.50/m!](#)

**Follow me
on Twitter!**

@ConvertingColor