

Converting Colors

YUV(197.4570, -16.4943,
17.1392)

Have a look what the booklet for
YUV(197.4570, -16.4943, 17.1392)
contains.

YUV(197.4570, -16.4943, 17.1392)	3
<i>Conversions</i>	4
<i>Details</i>	6
<i>Harmonies</i>	12
<i>Previews</i>	24
<i>Color Blindness Simulation</i>	28
<i>CSS Examples</i>	31

Color

**YUV(197.4570, -16.4943,
17.1392)**

Conversions

Conversions Part 1

Format	Color
Hex	D9C2A4
RGB	217, 194, 164
RGB Percent	85%, 76%, 64%
CMY	0.1490, 0.2392, 0.3569
CMYK	0.00, 0.11, 0.24, 0.15
HSL	34°, 41%, 75%
HSV	34°, 24%, 85%
XYZ	54.6079, 56.0156, 43.0559
YIQ	197.4570, 23.3380, -4.4540

Conversions

Conversions Part 2

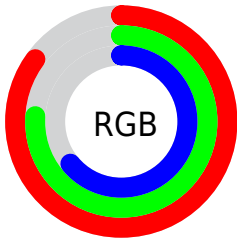
Format	Color
RYB	205, 217, 164
Decimal	14271140
CIELab	79.62, 3.50, 18.07
CIELCh	80, 18.404, 79.046
Yxy	56.0156, 0.3553, 0.3645
Android (android.graphics.Color)	4292461220 (0xFFD9C2A4)
YUV	197.4570, -16.4943, 17.1392
Hunter-Lab	74.8436, -0.7379, 18.2822

Details

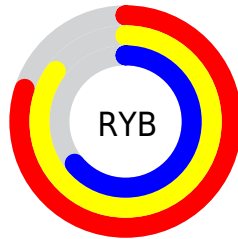
The YUV color $197.4570, -16.4943, 17.1392$ is a light color, and the websafe version is hex `CCCC99`. A complement of this color would be $183.5430, 16.4943, -17.1392$, and the grayscale version is $198.0000, 0.0000, 0.0000$.

A 20% lighter version of the original color is $247.9610, -14.2778, 6.1732$, and $143.3860, -15.4733, 16.3245$ is the 20% darker color. If you saturate the color by 10%, you get $189.6660, -23.4993, 23.9719$, and if you desaturate by 10%, it is $205.2480, -9.4893, 10.3065$.

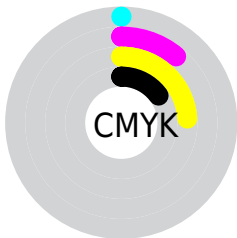
Distribution



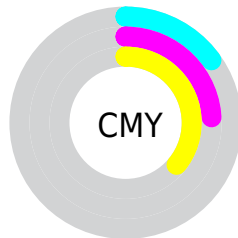
- Red (85%)
- Green (76%)
- Blue (64%)



- Red (80%)
- Yellow (85%)
- Blue (64%)



- Cyan (0%)
- Magenta (11%)
- Yellow (24%)
- Black (15%)



- Cyan (15%)
- Magenta (24%)
- Yellow (36%)

Brightness & Saturation Gradients

These gradients show how the YUV color 197.4570, -16.4943, 17.1392 changes by changing the brightness by 10 percent. The first figure shows a shift by +10% for each color and the second figure -10%.

Similar to the brightness gradients but the following saturation gradients show a change of the YUV color 197.4570, -16.4943, 17.1392 by changing the saturation by 10% instead.

■ 197.4570,
-16.4943, 17.1392

■ 197.4570,
-16.4943, 17.1392

255.0000, 0.0000,
0.0000

■ 170.2720,
-15.9101, 16.4245

■ 247.9610,
-14.2778, 6.1732

■ 143.3860,
-15.4733, 16.3245

■ 254.2020, -3.0576,
0.6998

■ 117.9020,
-14.7417, 14.9949

■ 93.3040, -14.4469,
13.7654

■ 69.2330, -13.4259,
12.9507

■ 46.7490, -12.6943,
11.6211

■ 25.7490, -12.6943,

11.6211

■ 1.4950, -0.7370,
3.0739

■ 0.0000, 0.0000,
0.0000

■ 197.4570,
-16.4943, 17.1392

■ 197.4570,
-16.4943, 17.1392

■ 189.6660,
-23.4993, 23.9719

■ 205.2480, -9.4893,
10.3065

■ 181.4020,
-29.7782, 31.2194

■ 213.5120, -3.2104,
3.0590

■ 173.6110,
-36.7832, 38.0522

■ 221.3030, 3.7946,
-3.7737

■ 165.2330,
-43.4989, 45.3997

■ 229.6810, 10.5103,
-11.1212

■ 157.5560,
-50.0671, 52.1324

■ 235.4200, 9.6529,
-16.1543

■ 149.1780,
-56.7828, 59.4799

■ 241.2900, 6.7590,
-21.3023

■ 141.3870,
-63.7878, 66.3126

■ 243.6380, 5.6015,
-23.3615

■ 137.0840,
-67.5824, 70.0863

Harmonies

Analogous

The Analogous color harmony consists of three colors that are next to each other on the color wheel.



199.0220, -13.3218, 26.2907



197.4570, -16.4943, 17.1392



195.7110, -15.1405, 2.8845

Triad

The Triadic color harmony groups three colors that are evenly spaced from another and form a triangle on the color wheel.



197.4570, -16.4943, 17.1392



190.9680, 8.3968, -33.2979



200.2970, 9.7136, 11.1405

Complementary

The Complementary color scheme is a pair of colors which are on the opposite of each other on the color wheel.



197.4570, -16.4943, 17.1392



183.5430, 16.4943, -17.1392

Split Complementary

Split-complementary colors differ from the complementary color scheme. The scheme consists of three colors, the original color and two neighbors of the complement color.



198.0930, 15.7302, -5.3436



197.4570, -16.4943, 17.1392



192.1020, 15.2327, -32.5385

Square

The Square scheme is like the rectangle color scheme, but the four colors are evenly spaced on the color wheel.



197.4570, -16.4943, 17.1392



191.6070, -0.7923, -25.9653



195.4500, 17.5262, -21.4426



200.6100, 1.6713, 24.0210

Rectangle

The Rectangle color scheme consists of four colors that form a rectangle on the color wheel.



197.4570, -16.4943, 17.1392



194.1550, -11.9084, -7.1519



195.4500, 17.5262, -21.4426



199.5460, 12.0558, 6.5372

Sweetspot

The Sweet Spot groups the original color and five complimentary colors.



197.4570, -16.4943, 17.1392



248.2520, -5.5472, 5.9180



182.5830, 2.6706, 30.1837



123.8110, -3.3578, 3.6738



0.0000, 0.0000, 0.0000



128.0000, 0.0000, 0.0000

Same Dimension

The Same Dimension uses a secret algorithm to generate beautiful new colors.



197.4570, -16.4943, 17.1392



227.7800, -23.0625, 23.8719



210.0610, -22.7081, 3.4545



105.8110, -3.3578, 3.6738



109.2530, -53.8617, 55.9061



29.0160, -14.3049, 14.8950

Inverse Universe

The Inverse Universe completely reimagines the original color for something new.



183.5430, 16.4943, -17.1392



208.2200, 23.0625, -23.8719



170.9390, 22.7081, -3.4545



102.6020, 3.6472, -3.1590



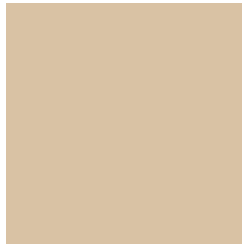
63.7470, 53.8617, -55.9061



16.9840, 14.3049, -14.8950

Previews

White Background



This preview shows how the YUV color 197.4570, -16.4943, 17.1392 looks on a white background.

Color Contrast Check

Large Text (above 18pt) WCAG AA × Fail

Any Text WCAG AA × Fail

Large Text (above 18pt) WCAG AAA × Fail

Any Text WCAG AAA × Fail

Black Background



This preview shows how the YUV color 197.4570, -16.4943, 17.1392 looks on a black background.

Color Contrast Check

Large Text (above 18pt) WCAG AA ✓ Pass

Any Text WCAG AA ✓ Pass

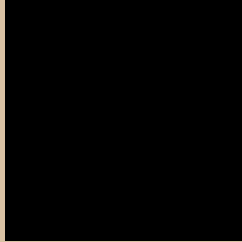
Large Text (above 18pt) WCAG AAA ✓ Pass

Any Text WCAG AAA ✓ Pass

If you want to check with other color combinations, try the [Color Contrast Checker](#).

YUV 197.4570, -16.4943, 17.1392

Background



This preview shows how black text looks on a background with the YUV color 197.4570, -16.4943, 17.1392.



This preview shows how white text looks on a background with the YUV color 197.4570, -16.4943, 17.1392.

Color Blindness Simulation

Color vision deficiency is a very complex topic, and I could not describe the different causes any better than Wikipedia does, so if you want to learn more, you should check out their [article about color blindness](#).

Dichromacy



Original Color

197.4570, -16.4943, 17.1392

Protanopia

196.6410, -15.5990, 9.9618

Deuteranopia

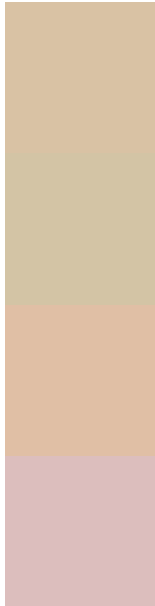
198.5120, -16.5214, 25.8610



Tritanopia

199.8760, 1.5401, 19.4027

Trichromacy



Original Color

197.4570, -16.4943, 17.1392

Protanomaly

196.9510, -15.7518, 12.3210

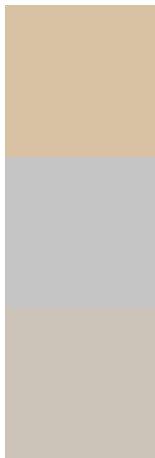
Deuteranomaly

197.9030, -16.2212, 22.8871

Tritanomaly

198.8560, -4.8590, 18.5433

Monochromacy



Original Color

197.4570, -16.4943, 17.1392

Achromatopsia

197.0000, 0.0000, 0.0000

Achromatomaly

197.1380, -5.9840, 6.0180

CSS Examples

Text

The CSS property to change the color of the text to YUV 197.4570, -16.4943, 17.1392 is called "color". The color property can be set on classes, ids or directly on the HTML element.

This example shows how text in the color `rgb(217, 194, 164)` looks like.

```
.text, #text, p{  
    color:rgb(217, 194, 164)  
}
```

If you want to add a text shadow in that color use the text-shadow property, you can generate a text shadow directly with our [CSS Text Shadow Generator](#).

Here you see how black text with a 4 pixel rgb(217, 194, 164) colored shadow looks like.

```
.shadow{ text-shadow: 4px 4px 2px rgb(217, 194, 164) }
```

Border

The CSS property to change the border of an element to YUV 197.4570, -16.4943, 17.1392 is called "border".

The border property can be set on classes, ids or directly on the HTML element.

This example shows the color as border, it can be applied via the CSS property "border" or "border-color".

```
.border, #border, table{ border:4px solid rgb(217, 194, 164) }
```


If only the border color should be changed use the property border-color.

```
.border{ border-color:rgb(217, 194, 164) }
```

If you want to add a box shadow in that color use:

Here you see how a box with a 4 pixel rgb(217, 194, 164) colored shadow looks like.

```
.boxshadow{ -moz-box-shadow:4px 4px 4px  
4px rgb(217, 194, 164); -webkit-box-  
shadow:4px 4px 4px 4px rgb(217, 194, 164);  
box-shadow:4px 4px 4px 4px rgb(217, 194,  
164) }
```

Background

The CSS property to change the background color of an element to YUV 197.4570, -16.4943, 17.1392 is called "background". The background property can be set on classes, ids or directly on the HTML element.

```
.background, #background, body{  
background: rgb(217, 194, 164) }
```

If only the background color should be changed can be used:

```
.background{ background-color: rgb(217,  
194, 164) }
```

This example shows the color as background, it is applied via the CSS property "background".

To optimize and compress your CSS code, you can use our [online CSS compressor and optimizer](#) based on csstidy. If you want to create a linear or radial gradient as background or border, check our [CSS Gradient Generator](#).

Hey! You found this booklet interesting? Support Converting Colors with the new Membership Option!

The pro membership hides all ads, plus gives you double the colors in the color bucket, and more awesome pro features!

[Learn more, Memberships starting at \\$2.50/m!](#)

**Follow me
on Twitter!**

@ConvertingColor