

Converting Colors

YUV(197.5670, -19.9995,
21.4277)

Have a look what the booklet for
YUV(197.5670, -19.9995, 21.4277)
contains.

YUV(197.5670, -19.9995, 21.4277)	3
<i>Conversions</i>	4
<i>Details</i>	6
<i>Harmonies</i>	12
<i>Previews</i>	24
<i>Color Blindness Simulation</i>	28
<i>CSS Examples</i>	31

Color

**YUV(197.5670, -19.9995,
21.4277)**

Conversions

Conversions Part 1

Format	Color
Hex	DEC19D
RGB	222, 193, 157
RGB Percent	87%, 76%, 62%
CMY	0.1294, 0.2431, 0.3843
CMYK	0.00, 0.13, 0.29, 0.13
HSL	33°, 50%, 74%
HSV	33°, 29%, 87%
XYZ	55.2800, 56.1038, 39.8138
YIQ	197.5670, 28.8400, -5.0480

Conversions

Conversions Part 2

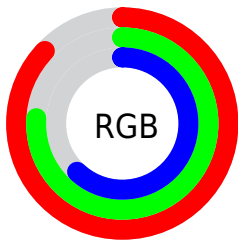
Format	Color
R _Y B	209, 222, 157
Decimal	14598557
CIE Lab	79.67, 4.98, 21.94
CIE LCh	80, 22.494, 77.212
Yxy	56.1038, 0.3656, 0.3711
Android (android.graphics.Color)	4292788637 (0xFFDEC19D)
YUV	197.5670, -19.9995, 21.4277
Hunter-Lab	74.9025, 0.6582, 20.9166

Details

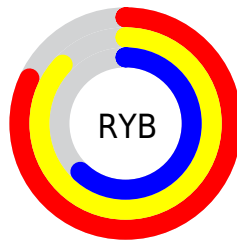
The YUV color $197.5670, -19.9995, 21.4277$ is a light color, and the websafe version is hex FFCC99 . A complement of this color would be $181.4330, 19.9995, -21.4277$, and the grayscale version is $198.0000, 0.0000, 0.0000$.

A 20% lighter version of the original color is $246.5760, -17.0460, 7.3878$, and $143.7840, -19.1205, 19.4834$ is the 20% darker color. If you saturate the color by 10%, you get $189.1890, -26.7152, 28.7752$, and if you desaturate by 10%, it is $205.9450, -13.2839, 14.0802$.

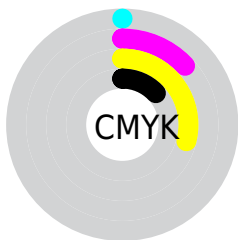
Distribution



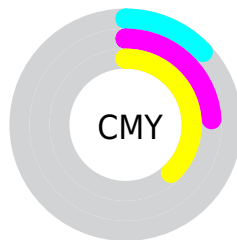
- Red (87%)
- Green (76%)
- Blue (62%)



- Red (82%)
- Yellow (87%)
- Blue (62%)



- Cyan (0%)
- Magenta (13%)
- Yellow (29%)
- Black (13%)



- Cyan (13%)
- Magenta (24%)
- Yellow (38%)

Brightness & Saturation Gradients

These gradients show how the YUV color 197.5670, -19.9995, 21.4277 changes by changing the brightness by 10 percent. The first figure shows a shift by +10% for each color and the second figure -10%.

Similar to the brightness gradients but the following saturation gradients show a change of the YUV color 197.5670, -19.9995, 21.4277 by changing the saturation by 10% instead.

■ 197.5670,
-19.9995, 21.4277

■ 197.5670,
-19.9995, 21.4277

■ 255.0000, 0.0000,
0.0000

■ 170.3820,
-19.4153, 20.7130

■ 246.5760,
-17.0460, 7.3878

■ 143.7840,
-19.1205, 19.4834

■ 253.2900, -6.5520,
1.4997

■ 117.7130,
-18.0995, 18.6687

■ 93.2290, -17.3679,
17.3392

■ 68.8590, -16.1995,
15.9097

■ 46.3750, -15.4679,
14.5801

■ 26.0480, -12.8417,

12.2359

■ 2.6910, -1.3267,
5.5330

■ 0.0000, 0.0000,
0.0000

■ 197.5670,
-19.9995, 21.4277

■ 197.5670,
-19.9995, 21.4277

■ 189.1890,
-26.7152, 28.7752

■ 205.9450,
-13.2839, 14.0802

■ 180.8110,
-33.4308, 36.1228

■ 214.3230, -6.5682,
6.7327

■ 172.3190,
-40.5833, 43.5702

■ 222.8150, 0.5842,
-0.7148

■ 163.9410,
-47.2989, 50.9177

■ 231.1930, 7.2999,
-8.0623

■ 155.5630,
-54.0146, 58.2652

■ 238.0890, 8.3371,
-14.1101

■ 147.7720,
-61.0196, 65.0980

■ 243.3720, 5.7326,
-18.7432

■ 139.3940,
-67.7352, 72.4455

■ 245.1330, 4.8644,
-20.2876

■ 138.5790,
-68.3194, 73.1602

Harmonies

Analogous

The Analogous color harmony consists of three colors that are next to each other on the color wheel.



199.7840, -15.6695, 32.6384



197.5670, -19.9995, 21.4277



195.3970, -18.9297, 4.9138

Triad

The Triadic color harmony groups three colors that are evenly spaced from another and form a triangle on the color wheel.



197.5670, -19.9995, 21.4277



188.6680, 10.0237, -41.8048



200.7040, 12.4709, 13.4146

Complementary

The Complementary color scheme is a pair of colors which are on the opposite of each other on the color wheel.



197.5670, -19.9995, 21.4277



181.4330, 19.9995, -21.4277

Split Complementary

Split-complementary colors differ from the complementary color scheme. The scheme consists of three colors, the original color and two neighbors of the complement color.



197.9940, 19.2300, -7.8877



197.5670, -19.9995, 21.4277



190.1440, 18.1700, -41.3453

Square

The Square scheme is like the rectangle color scheme, but the four colors are evenly spaced on the color wheel.



197.5670, -19.9995, 21.4277



190.3460, -1.6496, -30.9984



194.1440, 21.6210, -28.1903



201.5720, 2.6760, 28.4394

Rectangle

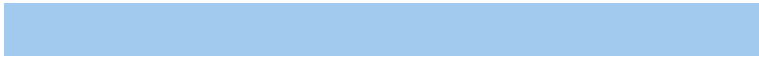
The Rectangle color scheme consists of four colors that form a rectangle on the color wheel.



197.5670, -19.9995, 21.4277



193.7590, -14.6712, -7.6816



194.1440, 21.6210, -28.1903



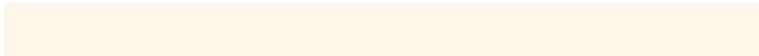
199.7570, 15.4028, 6.3521

Sweetspot

The Sweet Spot groups the original color and five complimentary colors.



197.5670, -19.9995, 21.4277



246.5080, -7.1524, 7.4475



179.7410, 3.0857, 37.0611



122.1810, -4.5262, 5.1033



0.0000, 0.0000, 0.0000



128.0000, 0.0000, 0.0000

Same Dimension

The Same Dimension uses a secret algorithm to generate beautiful new colors.



197.5670, -19.9995, 21.4277



221.3740, -27.2994, 29.4900



213.6930, -27.9496, 4.6542



107.8110, -3.3578, 3.6738



109.5630, -54.0146, 58.2652



30.2010, -14.8891, 15.6097

Inverse Universe

The Inverse Universe completely reimagines the original color for something new.



181.4330, 19.9995, -21.4277



199.6260, 27.2994, -29.4900



165.3070, 27.9496, -4.6542



105.1890, 3.3578, -3.6738



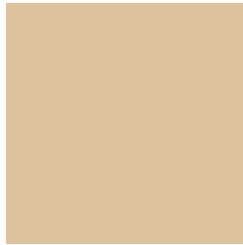
66.4370, 54.0146, -58.2652



18.3860, 14.5997, -16.1245

Previews

White Background



This preview shows how the YUV color 197.5670, -19.9995, 21.4277 looks on a white background.

Color Contrast Check

Large Text (above 18pt) WCAG AA × Fail

Any Text WCAG AA × Fail

Large Text (above 18pt) WCAG AAA × Fail

Any Text WCAG AAA × Fail

Black Background



This preview shows how the YUV color 197.5670, -19.9995, 21.4277 looks on a black background.

Color Contrast Check

Large Text (above 18pt) WCAG AA ✓ Pass

Any Text WCAG AA ✓ Pass

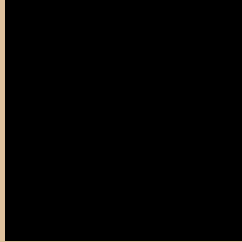
Large Text (above 18pt) WCAG AAA ✓ Pass

Any Text WCAG AAA ✓ Pass

If you want to check with other color combinations, try the [Color Contrast Checker](#).

YUV 197.5670, -19.9995, 21.4277

Background



This preview shows how black text looks on a background with the YUV color 197.5670, -19.9995, 21.4277.



This preview shows how white text looks on a background with the YUV color 197.5670, -19.9995, 21.4277.

21.4277.

Color Blindness Simulation

Color vision deficiency is a very complex topic, and I could not describe the different causes any better than Wikipedia does, so if you want to learn more, you should check out their [article about color blindness](#).

Dichromacy



Original Color

197.5670, -19.9995, 21.4277

Protanopia

196.5550, -18.5146, 11.7913

Deuteranopia

198.3120, -19.8738, 27.7904



Tritanopia

200.5560, 0.2189, 23.1914

Trichromacy



Original Color

197.5670, -19.9995, 21.4277

Protanomaly

197.0500, -19.2516, 14.8652

Deuteranomaly

198.0020, -19.7210, 25.4312

Tritanomaly

199.3080, -7.0538, 22.5319

Monochromacy



Original Color

197.5670, -19.9995, 21.4277

Achromatopsia

198.0000, 0.0000, 0.0000

Achromatomaly

197.8070, -7.2999, 8.0623

CSS Examples

Text

The CSS property to change the color of the text to YUV 197.5670, -19.9995, 21.4277 is called "color". The color property can be set on classes, ids or directly on the HTML element.

This example shows how text in the color `rgb(222, 193, 157)` looks like.

```
.text, #text, p{  
    color:rgb(222, 193, 157)  
}
```

If you want to add a text shadow in that color use the text-shadow property, you can generate a text shadow directly with our [CSS Text Shadow Generator](#).

Here you see how black text with a 4 pixel rgb(222, 193, 157) colored shadow looks like.

```
.shadow{ text-shadow: 4px 4px 2px rgb(222, 193, 157) }
```

Border

The CSS property to change the border of an element to YUV 197.5670, -19.9995, 21.4277 is called "border".

The border property can be set on classes, ids or directly on the HTML element.

This example shows the color as border, it can be applied via the CSS property "border" or "border-color".

```
.border, #border, table{ border:4px solid rgb(222, 193, 157) }
```


If only the border color should be changed use the property `border-color`.

```
.border{ border-color:rgb(222, 193, 157) }
```

If you want to add a box shadow in that color use:

Here you see how a box with a 4 pixel `rgb(222, 193, 157)` colored shadow looks like.

```
.boxshadow{ -moz-box-shadow:4px 4px 4px  
4px rgb(222, 193, 157); -webkit-box-  
shadow:4px 4px 4px 4px rgb(222, 193, 157);  
box-shadow:4px 4px 4px 4px rgb(222, 193,  
157) }
```

Background

The CSS property to change the background color of an element to YUV 197.5670, -19.9995, 21.4277 is called "background". The background property can be set on classes, ids or directly on the HTML element.

```
.background, #background, body{  
background: rgb(222, 193, 157) }
```

If only the background color should be changed can be used:

```
.background{ background-color: rgb(222,  
193, 157) }
```

This example shows the color as background, it is applied via the CSS property "background".

To optimize and compress your CSS code, you can use our [online CSS compressor and optimizer](#) based on csstidy. If you want to create a linear or radial gradient as background or border, check our [CSS Gradient Generator](#).

Hey! You found this booklet interesting? Support Converting Colors with the new Membership Option!

The pro membership hides all ads, plus gives you double the colors in the color bucket, and more awesome pro features!

[Learn more, Memberships starting at \\$2.50/m!](#)

**Follow me
on Twitter!**

@ConvertingColor