

Converting Colors

YUV(197.8350, -6.3277,
22.9467)

Have a look what the booklet for
YUV(197.8350, -6.3277, 22.9467)
contains.

YUV(197.8350, -6.3277, 22.9467)	3
<i>Conversions</i>	4
<i>Details</i>	6
<i>Harmonies</i>	12
<i>Previews</i>	24
<i>Color Blindness Simulation</i>	28
<i>CSS Examples</i>	31

Color

**YUV(197.8350, -6.3277,
22.9467)**

Conversions

Conversions Part 1

Format	Color
Hex	E0BBB9
RGB	224, 187, 185
RGB Percent	88%, 73%, 73%
CMY	0.1216, 0.2667, 0.2745
CMYK	0.00, 0.17, 0.17, 0.12
HSL	3°, 39%, 80%
HSV	3°, 17%, 88%
XYZ	57.2677, 54.8907, 53.4756
YIQ	197.8350, 22.6940, 7.2220

Conversions

Conversions Part 2

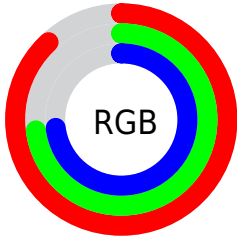
Format	Color
R _Y B	224, 187, 185
Decimal	14728121
CIE Lab	78.98, 12.92, 5.96
CIE LCh	79, 14.226, 24.769
Yxy	54.8907, 0.3457, 0.3314
Android (android.graphics.Color)	4292918201 (0xFFE0BBB9)
YUV	197.8350, -6.3277, 22.9467
Hunter-Lab	74.0883, 8.3200, 9.0673

Details

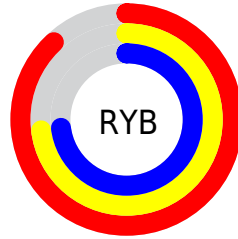
The YUV color $197.8350, -6.3277, 22.9467$ is a light color, and the websafe version is hex FFCCCC . A complement of this color would be $211.1650, 6.3277, -22.9467$, and the grayscale version is $198.0000, 0.0000, 0.0000$.

A 20% lighter version of the original color is $246.3600, -2.6425, 7.5773$, and $143.9380, -5.8854, 21.1024$ is the 20% darker color. If you saturate the color by 10%, you get $183.0000, -9.8600, 35.9570$, and if you desaturate by 10%, it is $212.6700, -2.7953, 9.9364$.

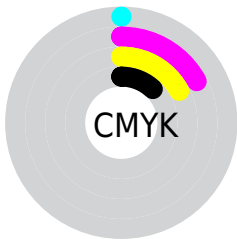
Distribution



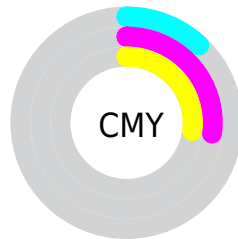
- Red (88%)
- Green (73%)
- Blue (73%)



- Red (88%)
- Yellow (73%)
- Blue (73%)



- Cyan (0%)
- Magenta (17%)
- Yellow (17%)
- Black (12%)



- Cyan (12%)
- Magenta (27%)
- Yellow (27%)

Brightness & Saturation Gradients


These gradients show how the YUV color 197.8350, -6.3277, 22.9467 changes by changing the brightness by 10 percent. The first figure shows a shift by +10% for each color and the second figure -10%.

Similar to the brightness gradients but the following saturation gradients show a change of the YUV color 197.8350, -6.3277, 22.9467 by changing the saturation by 10% instead.

 197.8350, -6.3277,
22.9467


 197.8350, -6.3277,
22.9467


255.0000, 0.0000,
0.0000

 170.5360, -6.1802,
22.3319


 246.3600, -2.6425,
7.5773

 143.9380, -5.8854,
21.1024

 118.0520, -5.4486,
21.0024

 93.4540, -5.1538,
19.7728

 69.5570, -4.7116,
17.9285

 46.9590, -4.4168,
16.6990

 25.3610, -4.1220,

15.4694

■ 5.6810, -2.8007,
11.6808

■ 0.0000, 0.0000,
0.0000

■ 197.8350, -6.3277,
22.9467

■ 197.8350, -6.3277,
22.9467

■ 183.0000, -9.8600,
35.9570

■ 212.6700, -2.7953,
9.9364

■ 167.4640,
-13.5398, 49.5821

■ 228.2060, 0.8844,
-3.6887

■ 152.6290,
-17.0721, 62.5924

■ 243.0410, 4.4168,
-16.6990

■ 137.6800,
-21.0412, 75.7026

■ 245.7310, 4.5696,
-19.0581

■ 122.8450,
-24.5736, 88.7129

■ 107.4230,
-27.8165, 102.2380

■ 92.4740, -31.7857,
115.3483

■ 77.6390, -35.3180,
128.3586

■ 73.4330, -36.2025,
132.0473

Harmonies

Analogous

The Analogous color harmony consists of three colors that are next to each other on the color wheel.



198.4200, -0.2071, 19.8027



197.8350, -6.3277, 22.9467



196.8470, -11.2636, 19.4282

Triad

The Triadic color harmony groups three colors that are evenly spaced from another and form a triangle on the color wheel.



197.8350, -6.3277, 22.9467



192.0280, -5.9298, -11.4256



194.4680, 13.5733, -13.5654

Complementary

The Complementary color scheme is a pair of colors which are on the opposite of each other on the color wheel.



197.8350, -6.3277, 22.9467



211.1650, 6.3277, -22.9467

Split Complementary

Split-complementary colors differ from the complementary color scheme. The scheme consists of three colors, the original color and two neighbors of the complement color.



192.3590, 12.1480, -23.1168



197.8350, -6.3277, 22.9467



191.0960, 0.9387, -21.1322

Square

The Square scheme is like the rectangle color scheme, but the four colors are evenly spaced on the color wheel.



197.8350, -6.3277, 22.9467



193.7260, -11.2039, 0.2403



191.0830, 7.3541, -25.5058



196.5620, 11.0619, -1.3699

Rectangle

The Rectangle color scheme consists of four colors that form a rectangle on the color wheel.



197.8350, -6.3277, 22.9467



195.7710, -12.7051, 15.1098



191.0830, 7.3541, -25.5058



194.0330, 13.2947, -17.5689

Sweetspot

The Sweet Spot groups the original color and five complimentary colors.



197.8350, -6.3277, 22.9467



246.4740, -2.2057, 7.4773



200.8790, 10.4127, 20.2771



122.3920, -1.1793, 4.9182



0.0000, 0.0000, 0.0000



128.0000, 0.0000, 0.0000

Same Dimension

The Same Dimension uses a secret algorithm to generate beautiful new colors.



197.8350, -6.3277, 22.9467



218.9070, -8.8282, 31.6536



208.9880, -11.8261, 13.1655



104.8760, -1.9109, 6.2477



57.9070, -28.5482, 103.5676



15.5260, -7.6543, 28.4797

Inverse Universe

The Inverse Universe completely reimagines the original color for something new.



211.1650, 6.3277, -22.9467



237.0930, 8.8282, -31.6536



200.0120, 11.8261, -13.1655



108.7110, 1.6215, -6.7625



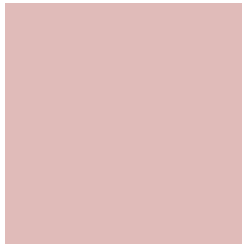
118.0930, 28.5482, -103.5676



32.4740, 7.6543, -28.4797

Previews

White Background



This preview shows how the YUV color 197.8350, -6.3277, 22.9467 looks on a white background.

Color Contrast Check

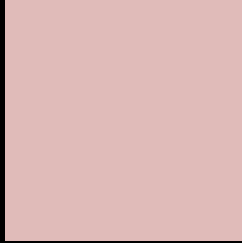
Large Text (above 18pt) WCAG AA × Fail

Any Text WCAG AA × Fail

Large Text (above 18pt) WCAG AAA × Fail

Any Text WCAG AAA × Fail

Black Background



This preview shows how the YUV color 197.8350, -6.3277, 22.9467 looks on a black background.

Color Contrast Check

Large Text (above 18pt) WCAG AA ✓ Pass

Any Text WCAG AA ✓ Pass

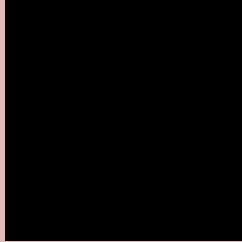
Large Text (above 18pt) WCAG AAA ✓ Pass

Any Text WCAG AAA ✓ Pass

If you want to check with other color combinations, try the [Color Contrast Checker](#).

YUV 197.8350, -6.3277, 22.9467

Background



This preview shows how black text looks on a background with the YUV color 197.8350, -6.3277, 22.9467.



This preview shows how white text looks on a background with the YUV color 197.8350, -6.3277,

Color Blindness Simulation

Color vision deficiency is a very complex topic, and I could not describe the different causes any better than Wikipedia does, so if you want to learn more, you should check out their [article about color blindness](#).

Dichromacy



Original Color

197.8350, -6.3277, 22.9467

Protanopia

196.1100, -3.5052, 4.2885

Deuteranopia

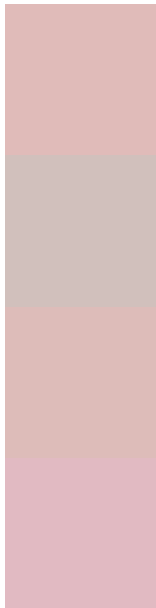
197.5140, -6.1694, 18.8432



Tritanopia

198.8550, 0.0715, 23.8062

Trichromacy



Original Color

197.8350, -6.3277, 22.9467

Protanomaly

196.6270, -4.2531, 10.8511

Deuteranomaly

197.5250, -6.1748, 20.5876

Tritanomaly

198.5730, -2.2545, 23.1765

Monochromacy



Original Color

197.8350, -6.3277, 22.9467

Achromatopsia

198.0000, 0.0000, 0.0000

Achromatomaly

197.7730, -2.3531, 8.0921

CSS Examples

Text

The CSS property to change the color of the text to YUV 197.8350, -6.3277, 22.9467 is called "color". The color property can be set on classes, ids or directly on the HTML element.

This example shows how text in the color `rgb(224, 187, 185)` looks like.

```
.text, #text, p{  
    color:rgb(224, 187, 185)  
}
```

If you want to add a text shadow in that color use the text-shadow property, you can generate a text shadow directly with our [CSS Text Shadow Generator](#).

Here you see how black text with a 4 pixel rgb(224, 187, 185) colored shadow looks like.

```
.shadow{ text-shadow: 4px 4px 2px rgb(224, 187, 185) }
```

Border

The CSS property to change the border of an element to YUV 197.8350, -6.3277, 22.9467 is called "border". The border property can be set on classes, ids or directly on the HTML element.

This example shows the color as border, it can be applied via the CSS property "border" or "border-color".

```
.border, #border, table{ border:4px solid rgb(224, 187, 185) }
```


If only the border color should be changed use the property `border-color`.

```
.border{ border-color:rgb(224, 187, 185) }
```

If you want to add a box shadow in that color use:

Here you see how a box with a 4 pixel `rgb(224, 187, 185)` colored shadow looks like.

```
.boxshadow{ -moz-box-shadow:4px 4px 4px  
4px rgb(224, 187, 185); -webkit-box-  
shadow:4px 4px 4px 4px rgb(224, 187, 185);  
box-shadow:4px 4px 4px 4px rgb(224, 187,  
185) }
```

Background

The CSS property to change the background color of an element to YUV 197.8350, -6.3277, 22.9467 is called "background". The background property can be set on classes, ids or directly on the HTML element.

```
.background, #background, body{  
background: rgb(224, 187, 185) }
```

If only the background color should be changed can be used:

```
.background{ background-color: rgb(224,  
187, 185) }
```

This example shows the color as background, it is applied via the CSS property "background".

To optimize and compress your CSS code, you can use our [online CSS compressor and optimizer](#) based on csstidy. If you want to create a linear or radial gradient as background or border, check our [CSS Gradient Generator](#).

Hey! You found this booklet interesting? Support Converting Colors with the new Membership Option!

The pro membership hides all ads, plus gives you double the colors in the color bucket, and more awesome pro features!

[Learn more, Memberships starting at \\$2.50/m!](#)

**Follow me
on Twitter!**

@ConvertingColor