

# Converting Colors

YUV(197.8510, -7.3215,  
15.0397)

Have a look what the booklet for  
YUV(197.8510, -7.3215, 15.0397)  
contains.

<b>YUV(197.8510, -7.3215, 15.0397)</b> .....	3
<b><i>Conversions</i></b> .....	4
<b><i>Details</i></b> .....	6
<b><i>Harmonies</i></b> .....	12
<b><i>Previews</i></b> .....	24
<b><i>Color Blindness Simulation</i></b> .....	28
<b><i>CSS Examples</i></b> .....	31

# Color

**YUV(197.8510, -7.3215,  
15.0397)**

# Conversions

## Conversions Part 1

<b>Format</b>	<b>Color</b>
Hex	D7C0B7
RGB	215, 192, 183
RGB Percent	84%, 75%, 72%
CMY	0.1569, 0.2471, 0.2824
CMYK	0.00, 0.11, 0.15, 0.16
HSL	17°, 29%, 78%
HSV	17°, 15%, 84%
XYZ	55.4212, 55.5652, 52.6039
YIQ	197.8510, 16.5970, 2.0770

# Conversions

## Conversions Part 2

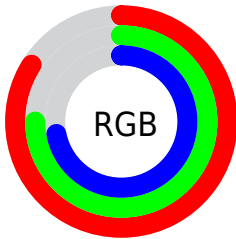
<b>Format</b>	<b>Color</b>
R <sub>Y</sub> B	215, 196, 183
Decimal	14139575
CIE Lab	79.37, 6.66, 7.49
CIE LCh	79, 10.022, 48.365
Yxy	55.5652, 0.3388, 0.3397
Android (android.graphics.Color)	4292329655 (0xFFD7C0B7)
YUV	197.8510, -7.3215, 15.0397
Hunter-Lab	74.5421, 2.2641, 10.3389

# Details

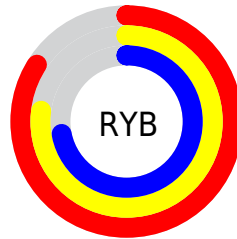
The YUV color  $197.8510, -7.3215, 15.0397$  is a light color, and the websafe version is hex `CCCCCC`. A complement of this color would be  $200.1490, 7.3215, -15.0397$ , and the grayscale version is  $198.0000, 0.0000, 0.0000$ .

A 20% lighter version of the original color is  $249.0670, -4.9630, 5.2032$ , and  $144.2530, -7.0267, 13.8101$  is the 20% darker color. If you saturate the color by 10%, you get  $186.6520, -12.1534, 24.8612$ , and if you desaturate by 10%, it is  $209.1640, -2.0529, 5.1182$ .

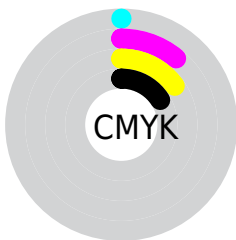
# Distribution



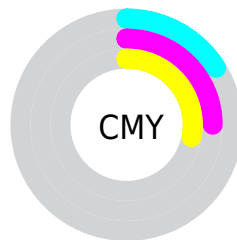
- Red (84%)
- Green (75%)
- Blue (72%)



- Red (84%)
- Yellow (77%)
- Blue (72%)



- Cyan (0%)
- Magenta (11%)
- Yellow (15%)
- Black (16%)



- Cyan (16%)
- Magenta (25%)
- Yellow (28%)

# Brightness & Saturation Gradients

These gradients show how the YUV color 197.8510, -7.3215, 15.0397 changes by changing the brightness by 10 percent. The first figure shows a shift by +10% for each color and the second figure -10%.

Similar to the brightness gradients but the following saturation gradients show a change of the YUV color 197.8510, -7.3215, 15.0397 by changing the saturation by 10% instead.



■ 197.8510, -7.3215,  
15.0397

■ 197.8510, -7.3215,  
15.0397

255.0000, 0.0000,  
0.0000

■ 170.5520, -7.1741,  
14.4249

■ 249.0670, -4.9630,  
5.2032

■ 144.2530, -7.0267,  
13.8101

■ 118.3670, -6.5899,  
13.7101

■ 93.7690, -6.2951,  
12.4806

■ 69.8830, -5.8583,  
12.3806

■ 47.2850, -5.5635,  
11.1511

■ 26.5730, -5.7055,

10.0215

■ 2.9900, -1.4741,  
6.1478

■ 0.0000, 0.0000,  
0.0000

■ 197.8510, -7.3215,  
15.0397

■ 197.8510, -7.3215,  
15.0397

■ 186.6520,  
-12.1534, 24.8612

■ 209.1640, -2.0529,  
5.1182

■ 174.7520,  
-17.1327, 35.2975

■ 220.9500, 2.4897,  
-5.2181

■ 163.4390,  
-22.4014, 45.2190

■ 232.2630, 7.7583,  
-15.1397

■ 151.6530,  
-26.9439, 55.5553

■ 242.4530, 6.1857,  
-24.0763

■ 140.4540,  
-31.7758, 65.3768

■ 243.0400, 5.8963,  
-24.5911

■ 128.5540,  
-36.7551, 75.8131

■ 117.3550,  
-41.5870, 85.6347

■ 105.4550,  
-46.5663, 96.0710

■ 99.5050, -49.0560,  
101.2891

# Harmonies

## Analogous

The Analogous color harmony consists of three colors that are next to each other on the color wheel.



198.1870, -3.5432, 16.4990



197.8510, -7.3215, 15.0397



197.0630, -8.9051, 9.5917

# Triad

The Triadic color harmony groups three colors that are evenly spaced from another and form a triangle on the color wheel.



197.8510, -7.3215, 15.0397



193.7980, -0.3934, -13.8548



196.8670, 8.4466, -2.5144

# Complementary

The Complementary color scheme is a pair of colors which are on the opposite of each other on the color wheel.



197.8510, -7.3215, 15.0397



200.1490, 7.3215, -15.0397

# Split Complementary

Split-complementary colors differ from the complementary color scheme. The scheme consists of three colors, the original color and two neighbors of the complement color.



196.0400, 9.3473, -11.4361



197.8510, -7.3215, 15.0397



193.6280, 4.1274, -17.2138

# Square

The Square scheme is like the rectangle color scheme, but the four colors are evenly spaced on the color wheel.



197.8510, -7.3215, 15.0397



194.2890, -5.0725, -6.3925



194.2520, 7.7638, -16.8840



198.4120, 5.2199, 5.7777



# Rectangle

The Rectangle color scheme consists of four colors that form a rectangle on the color wheel.



197.8510, -7.3215, 15.0397



196.3290, -9.0362, 4.9735



194.2520, 7.7638, -16.8840



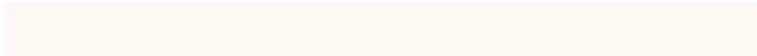
196.3720, 9.1836, -5.5882

# Sweetspot

The Sweet Spot groups the original color and five complimentary colors.



197.8510, -7.3215, 15.0397



249.7510, -2.3422, 4.6034



195.1900, 5.3293, 17.3734



124.2670, -1.6106, 3.2738



0.0000, 0.0000, 0.0000



128.0000, 0.0000, 0.0000

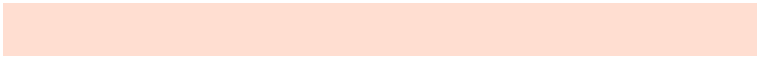


# Same Dimension

The Same Dimension uses a secret algorithm to generate beautiful new colors.



197.8510, -7.3215, 15.0397



230.3850, -10.5428, 21.5874



207.2430, -11.9518, 6.8029



101.0500, -2.4896, 5.2182



79.3050, -39.0974, 80.4165



19.9010, -9.8112, 20.2578

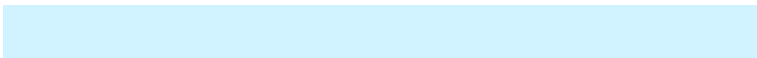


# Inverse Universe

The Inverse Universe completely reimagines the original color for something new.



200.1490, 7.3215, -15.0397



233.6150, 10.5428, -21.5874



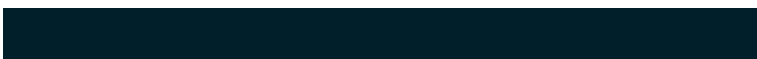
190.7570, 11.9518, -6.8029



101.9500, 2.4897, -5.2181



91.6950, 39.0974, -80.4165



23.0990, 9.8112, -20.2578



# Previews

## White Background



This preview shows how the YUV color 197.8510, -7.3215, 15.0397 looks on a white background.

## Color Contrast Check

Large Text (above 18pt) WCAG AA × Fail

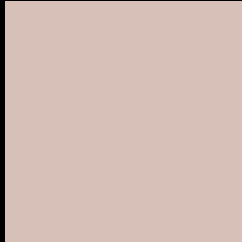
Any Text WCAG AA × Fail

Large Text (above 18pt) WCAG AAA × Fail

Any Text WCAG AAA × Fail



# Black Background



This preview shows how the YUV color 197.8510, -7.3215, 15.0397 looks on a black background.

## Color Contrast Check

Large Text (above 18pt) WCAG AA ✓ Pass

Any Text WCAG AA ✓ Pass

Large Text (above 18pt) WCAG AAA ✓ Pass

Any Text WCAG AAA ✓ Pass

If you want to check with other color combinations, try the [Color Contrast Checker](#).

# YUV 197.8510, -7.3215, 15.0397

## Background



This preview shows how black text looks on a background with the YUV color 197.8510, -7.3215, 15.0397.



This preview shows how white text looks on a background with the YUV color 197.8510, -7.3215,



# Color Blindness Simulation

Color vision deficiency is a very complex topic, and I could not describe the different causes any better than Wikipedia does, so if you want to learn more, you should check out their [article about color blindness](#).

## Dichromacy



### Original Color

197.8510, -7.3215, 15.0397

### Protanopia

196.8390, -5.8366, 5.4032

### Deuteranopia

198.4710, -7.6272, 19.7579



## Tritanopia

199.3810, 2.2772, 16.3289

# Trichromacy



## Original Color

197.8510, -7.3215, 15.0397

## Protanomaly

197.3340, -6.5737, 8.4771

## Deuteranomaly

198.4600, -7.6218, 18.0136

## Tritanomaly

198.7570, -1.3592, 15.9991

# Monochromacy



## Original Color

197.8510, -7.3215, 15.0397

## Achromatopsia

198.0000, 0.0000, 0.0000

## Achromatomaly

198.0500, -2.4897, 5.2181

# CSS Examples

## Text

The CSS property to change the color of the text to YUV 197.8510, -7.3215, 15.0397 is called "color". The color property can be set on classes, ids or directly on the HTML element.

This example shows how text in the color `rgb(215, 192, 183)` looks like.

```
.text, #text, p{  
    color:rgb(215, 192, 183)  
}
```

If you want to add a text shadow in that color use the text-shadow property, you can generate a text shadow directly with our [CSS Text Shadow Generator](#).

Here you see how black text with a 4 pixel rgb(215, 192, 183) colored shadow looks like.

```
.shadow{ text-shadow: 4px 4px 2px rgb(215, 192, 183) }
```

## Border

The CSS property to change the border of an element to YUV 197.8510, -7.3215, 15.0397 is called "border". The border property can be set on classes, ids or directly on the HTML element.

This example shows the color as border, it can be applied via the CSS property "border" or "border-color".

```
.border, #border, table{ border:4px solid rgb(215, 192, 183) }
```



If only the border color should be changed use the property `border-color`.

```
.border{ border-color:rgb(215, 192, 183) }
```

If you want to add a box shadow in that color use:

Here you see how a box with a 4 pixel `rgb(215, 192, 183)` colored shadow looks like.

```
.boxshadow{ -moz-box-shadow:4px 4px 4px  
4px rgb(215, 192, 183); -webkit-box-  
shadow:4px 4px 4px 4px rgb(215, 192, 183);  
box-shadow:4px 4px 4px 4px rgb(215, 192,  
183) }
```

# Background

The CSS property to change the background color of an element to YUV 197.8510, -7.3215, 15.0397 is called "background". The background property can be set on classes, ids or directly on the HTML element.

```
.background, #background, body{  
background: rgb(215, 192, 183) }
```

If only the background color should be changed can be used:

```
.background{ background-color: rgb(215,  
192, 183) }
```

This example shows the color as background, it is applied via the CSS property "background".

To optimize and compress your CSS code, you can use our [online CSS compressor and optimizer](#) based on csstidy. If you want to create a linear or radial gradient as background or border, check our [CSS Gradient Generator](#).

Hey! You found this booklet interesting? Support Converting Colors with the new Membership Option!

The pro membership hides all ads, plus gives you double the colors in the color bucket, and more awesome pro features!

**[Learn more, Memberships starting at \\$2.50/m!](#)**

**Follow me  
on Twitter!**

@ConvertingColor