

Converting Colors

YUV(198.0880, -16.8054,
23.6018)

Have a look what the booklet for
YUV(198.0880, -16.8054, 23.6018)
contains.

YUV(198.0880, -16.8054, 23.6018)	3
<i>Conversions</i>	4
<i>Details</i>	6
<i>Harmonies</i>	12
<i>Previews</i>	24
<i>Color Blindness Simulation</i>	28
<i>CSS Examples</i>	31

Color

**YUV(198.0880, -16.8054,
23.6018)**

Conversions

Conversions Part 1

Format	Color
Hex	E1BFA4
RGB	225, 191, 164
RGB Percent	88%, 75%, 64%
CMY	0.1176, 0.2510, 0.3569
CMYK	0.00, 0.15, 0.27, 0.12
HSL	27°, 50%, 76%
HSV	27°, 27%, 88%
XYZ	56.3830, 55.9495, 42.9496
YIQ	198.0880, 28.9310, -1.1890

Conversions

Conversions Part 2

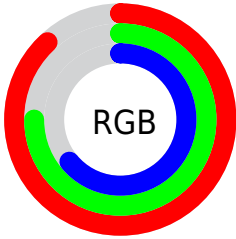
Format	Color
R _Y B	225, 212, 164
Decimal	14794660
CIE Lab	79.59, 8.12, 18.12
CIE LCh	80, 19.858, 65.880
Yxy	55.9495, 0.3631, 0.3603
Android (android.graphics.Color)	4292984740 (0xFFE1BFA4)
YUV	198.0880, -16.8054, 23.6018
Hunter-Lab	74.7994, 3.6524, 18.3154

Details

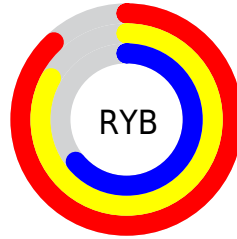
The YUV color **198.0880, -16.8054, 23.6018** is a light color, and the websafe version is hex **FFCC99**. A complement of this color would be **190.9120, 16.8054, -23.6018**, and the grayscale version is **198.0000, 0.0000, 0.0000**.

A 20% lighter version of the original color is **246.2000, -13.4096, 7.7176**, and **144.3050, -15.9264, 21.6575** is the 20% darker color. If you saturate the color by 10%, you get **187.9490, -22.6529, 32.4937**, and if you desaturate by 10%, it is **208.3410, -10.5211, 14.6099**.

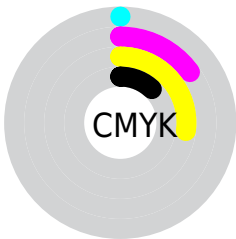
Distribution



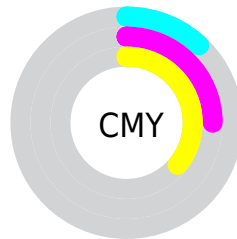
- Red (88%)
- Green (75%)
- Blue (64%)



- Red (88%)
- Yellow (83%)
- Blue (64%)



- Cyan (0%)
- Magenta (15%)
- Yellow (27%)
- Black (12%)



- Cyan (12%)
- Magenta (25%)
- Yellow (36%)

Brightness & Saturation Gradients

These gradients show how the YUV color 198.0880, -16.8054, 23.6018 changes by changing the brightness by 10 percent. The first figure shows a shift by +10% for each color and the second figure -10%.

Similar to the brightness gradients but the following saturation gradients show a change of the YUV color 198.0880, -16.8054, 23.6018 by changing the saturation by 10% instead.

■ 198.0880,
-16.8054, 23.6018

■ 198.0880,
-16.8054, 23.6018

■ 255.0000, 0.0000,
0.0000

■ 170.9030,
-16.2212, 22.8871

■ 246.2000,
-13.4096, 7.7176

■ 144.3050,
-15.9264, 21.6575

■ 254.2020, -3.0576,
0.6998

■ 118.2340,
-14.9054, 20.8428

■ 93.6360, -14.6105,
19.6132

■ 69.2660, -13.4421,
18.1837

■ 46.7820, -12.7105,
16.8542

■ 25.7710, -12.7051,

15.1098

■ 4.7840, -2.3585,
9.8364

■ 0.0000, 0.0000,
0.0000

■ 198.0880,
-16.8054, 23.6018

■ 198.0880,
-16.8054, 23.6018

■ 187.9490,
-22.6529, 32.4937

■ 208.3410,
-10.5211, 14.6099

■ 178.2830,
-29.2265, 40.9708

■ 217.8930, -4.3842,
6.2328

■ 168.1440,
-35.0740, 49.8627

■ 228.1460, 1.9000,
-2.7590

■ 158.4780,
-41.6477, 58.3398

■ 237.6980, 8.0369,
-11.1361

■ 148.3390,
-47.4951, 67.2317

■ 245.4430, 4.7116,
-17.9285

■ 138.6730,
-54.0688, 75.7088

■ 246.0300, 4.4222,
-18.4433

■ 128.5340,
-59.9163, 84.6007

■ 125.9750,
-62.1057, 86.8449

Harmonies

Analogous

The Analogous color harmony consists of three colors that are next to each other on the color wheel.



199.5110, -11.5909, 31.1239



198.0880, -16.8054, 23.6018



196.1850, -17.3462, 10.3618

Triad

The Triadic color harmony groups three colors that are evenly spaced from another and form a triangle on the color wheel.



198.0880, -16.8054, 23.6018



190.3440, 4.7604, -33.6277



199.2900, 13.6610, 5.0077

Complementary

The Complementary color scheme is a pair of colors which are on the opposite of each other on the color wheel.



198.0880, -16.8054, 23.6018



190.9120, 16.8054, -23.6018

Split Complementary

Split-complementary colors differ from the complementary color scheme. The scheme consists of three colors, the original color and two neighbors of the complement color.



197.0210, 18.2306, -14.0504



198.0880, -16.8054, 23.6018



190.6130, 13.5018, -37.3716

Square

The Square scheme is like the rectangle color scheme, but the four colors are evenly spaced on the color wheel.



198.0880, -16.8054, 23.6018



192.1900, -5.0237, -22.0916



192.9220, 18.2795, -29.7496



200.7390, 6.0447, 21.2769

Rectangle

The Rectangle color scheme consists of four colors that form a rectangle on the color wheel.



198.0880, -16.8054, 23.6018



194.6890, -15.1297, -0.6043



192.9220, 18.2795, -29.7496



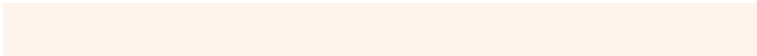
198.4140, 15.5719, -1.2401

Sweetspot

The Sweet Spot groups the original color and five complimentary colors.



198.0880, -16.8054, 23.6018



246.2630, -5.5527, 7.6623



186.2290, 6.2961, 34.0022



121.8220, -3.3632, 5.4181



0.0000, 0.0000, 0.0000



128.0000, 0.0000, 0.0000

Same Dimension

The Same Dimension uses a secret algorithm to generate beautiful new colors.



198.0880, -16.8054, 23.6018



217.8350, -23.0897, 32.5937



215.6980, -25.4871, 8.1579



107.2240, -3.0684, 4.1886



98.4100, -48.5161, 68.0464



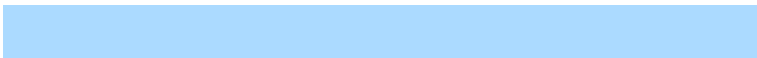
26.6790, -13.1527, 18.6985

Inverse Universe

The Inverse Universe completely reimagines the original color for something new.



190.9120, 16.8054, -23.6018



208.1650, 23.0897, -32.5937



173.3020, 25.4871, -8.1579



105.7760, 3.0684, -4.1886



77.5900, 48.5161, -68.0464



21.3210, 13.1527, -18.6985

Previews

White Background



This preview shows how the YUV color 198.0880, -16.8054, 23.6018 looks on a white background.

Color Contrast Check

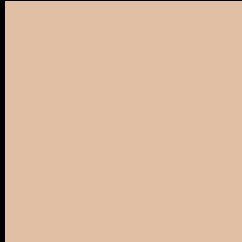
Large Text (above 18pt) WCAG AA × Fail

Any Text WCAG AA × Fail

Large Text (above 18pt) WCAG AAA × Fail

Any Text WCAG AAA × Fail

Black Background



This preview shows how the YUV color 198.0880, -16.8054, 23.6018 looks on a black background.

Color Contrast Check

Large Text (above 18pt) WCAG AA ✓ Pass

Any Text WCAG AA ✓ Pass

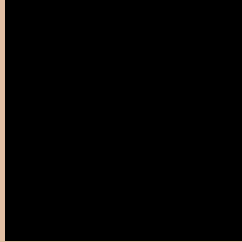
Large Text (above 18pt) WCAG AAA ✓ Pass

Any Text WCAG AAA ✓ Pass

If you want to check with other color combinations, try the [Color Contrast Checker](#).

YUV 198.0880, -16.8054, 23.6018

Background



This preview shows how black text looks on a background with the YUV color 198.0880, -16.8054, 23.6018.



This preview shows how white text looks on a background with the YUV color 198.0880, -16.8054,

23.6018.

Color Blindness Simulation

Color vision deficiency is a very complex topic, and I could not describe the different causes any better than Wikipedia does, so if you want to learn more, you should check out their [article about color blindness](#).

Dichromacy



Original Color

198.0880, -16.8054, 23.6018

Protanopia

196.8690, -14.7254, 9.7619

Deuteranopia

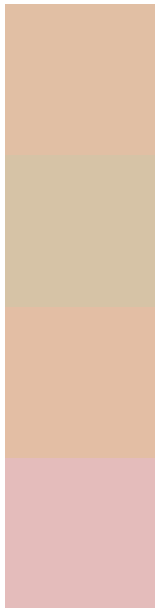
198.3980, -16.9582, 25.9610



Tritanopia

200.4530, -0.2233, 25.0357

Trichromacy



Original Color

198.0880, -16.8054, 23.6018

Protanomaly

197.3750, -15.4679, 14.5801

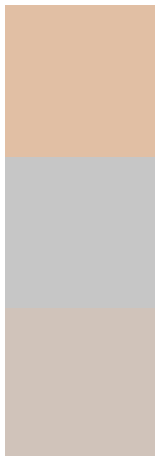
Deuteranomaly

198.0990, -16.8108, 25.3462

Tritanomaly

199.8460, -6.3331, 24.6911

Monochromacy



Original Color

198.0880, -16.8054, 23.6018

Achromatopsia

198.0000, 0.0000, 0.0000

Achromatomaly

197.8610, -5.8475, 8.8919

CSS Examples

Text

The CSS property to change the color of the text to YUV 198.0880, -16.8054, 23.6018 is called "color". The color property can be set on classes, ids or directly on the HTML element.

This example shows how text in the color `rgb(225, 191, 164)` looks like.

```
.text, #text, p{  
    color:rgb(225, 191, 164)  
}
```

If you want to add a text shadow in that color use the text-shadow property, you can generate a text shadow directly with our [CSS Text Shadow Generator](#).

Here you see how black text with a 4 pixel rgb(225, 191, 164) colored shadow looks like.

```
.shadow{ text-shadow: 4px 4px 2px rgb(225, 191, 164) }
```

Border

The CSS property to change the border of an element to YUV 198.0880, -16.8054, 23.6018 is called "border".

The border property can be set on classes, ids or directly on the HTML element.

This example shows the color as border, it can be applied via the CSS property "border" or "border-color".

```
.border, #border, table{ border:4px solid rgb(225, 191, 164) }
```


If only the border color should be changed use the property `border-color`.

```
.border{ border-color:rgb(225, 191, 164) }
```

If you want to add a box shadow in that color use:

Here you see how a box with a 4 pixel `rgb(225, 191, 164)` colored shadow looks like.

```
.boxshadow{ -moz-box-shadow:4px 4px 4px  
4px rgb(225, 191, 164); -webkit-box-  
shadow:4px 4px 4px 4px rgb(225, 191, 164);  
box-shadow:4px 4px 4px 4px rgb(225, 191,  
164) }
```

Background

The CSS property to change the background color of an element to YUV 198.0880, -16.8054, 23.6018 is called "background". The background property can be set on classes, ids or directly on the HTML element.

```
.background, #background, body{  
background: rgb(225, 191, 164) }
```

If only the background color should be changed can be used:

```
.background{ background-color: rgb(225,  
191, 164) }
```

This example shows the color as background, it is applied via the CSS property "background".

To optimize and compress your CSS code, you can use our [online CSS compressor and optimizer](#) based on csstidy. If you want to create a linear or radial gradient as background or border, check our [CSS Gradient Generator](#).

Hey! You found this booklet interesting? Support Converting Colors with the new Membership Option!

The pro membership hides all ads, plus gives you double the colors in the color bucket, and more awesome pro features!

[Learn more, Memberships starting at \\$2.50/m!](#)

**Follow me
on Twitter!**

@ConvertingColor