

Converting Colors

YUV(198.1910, -16.3632,
21.7575)

Have a look what the booklet for
YUV(198.1910, -16.3632, 21.7575)
contains.

YUV(198.1910, -16.3632, 21.7575)	3
<i>Conversions</i>	4
<i>Details</i>	6
<i>Harmonies</i>	12
<i>Previews</i>	24
<i>Color Blindness Simulation</i>	28
<i>CSS Examples</i>	31

Color

**YUV(198.1910, -16.3632,
21.7575)**

Conversions

Conversions Part 1

Format	Color
Hex	DFC0A5
RGB	223, 192, 165
RGB Percent	87%, 75%, 65%
CMY	0.1255, 0.2471, 0.3529
CMYK	0.00, 0.14, 0.26, 0.13
HSL	28°, 48%, 76%
HSV	28°, 26%, 87%
XYZ	56.0726, 56.1039, 43.4711
YIQ	198.1910, 27.1430, -1.8250

Conversions

Conversions Part 2

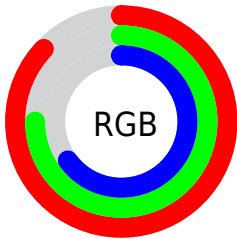
Format	Color
R _Y B	223, 216, 165
Decimal	14663845
CIE Lab	79.67, 6.96, 17.68
CIE LCh	80, 19.007, 68.505
Yxy	56.1039, 0.3603, 0.3605
Android (android.graphics.Color)	4292853925 (0xFFDFC0A5)
YUV	198.1910, -16.3632, 21.7575
Hunter-Lab	74.9025, 2.5471, 18.0217

Details

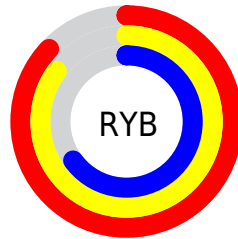
The YUV color **198.1910, -16.3632, 21.7575** is a light color, and the websafe version is hex **FFCC99**. A complement of this color would be **189.8090, 16.3632, -21.7575**, and the grayscale version is **198.0000, 0.0000, 0.0000**.

A 20% lighter version of the original color is **246.9010, -13.2622, 7.1028**, and **144.4080, -15.4841, 19.8132** is the 20% darker color. If you saturate the color by 10%, you get **188.6390, -22.5000, 30.1346**, and if you desaturate by 10%, it is **207.7430, -10.2263, 13.3804**.

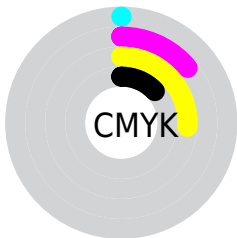
Distribution



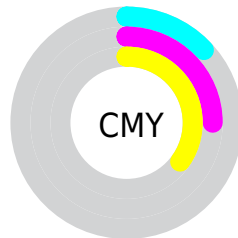
- Red (87%)
- Green (75%)
- Blue (65%)



- Red (87%)
- Yellow (85%)
- Blue (65%)



- Cyan (0%)
- Magenta (14%)
- Yellow (26%)
- Black (13%)



- Cyan (13%)
- Magenta (25%)
- Yellow (35%)

Brightness & Saturation Gradients

These gradients show how the YUV color 198.1910, -16.3632, 21.7575 changes by changing the brightness by 10 percent. The first figure shows a shift by +10% for each color and the second figure -10%.

Similar to the brightness gradients but the following saturation gradients show a change of the YUV color 198.1910, -16.3632, 21.7575 by changing the saturation by 10% instead.

■ 198.1910,
-16.3632, 21.7575

■ 198.1910,
-16.3632, 21.7575

255.0000, 0.0000,
0.0000

■ 171.0060,
-15.7790, 21.0427

■ 246.9010,
-13.2622, 7.1028

■ 144.4080,
-15.4841, 19.8132

■ 254.3160, -2.6208,
0.5999

■ 118.3370,
-14.4631, 18.9985

■ 93.7390, -14.1683,
17.7689

■ 69.6680, -13.1473,
16.9542

■ 46.8850, -12.2683,
15.0099

■ 26.0590, -12.8471,

13.9803

■ 4.1860, -2.0637,
8.6069

■ 0.0000, 0.0000,
0.0000

■ 198.1910,
-16.3632, 21.7575

■ 198.1910,
-16.3632, 21.7575

■ 188.6390,
-22.5000, 30.1346

■ 207.7430,
-10.2263, 13.3804

■ 178.9730,
-29.0737, 38.6117

■ 217.4090, -3.6526,
4.9033

■ 169.4210,
-35.2106, 46.9888

■ 226.9610, 2.4842,
-3.4738

■ 159.8690,
-41.3474, 55.3659

■ 236.5130, 8.6211,
-11.8509

■ 150.3170,
-47.4843, 63.7430

■ 243.6710, 5.5852,
-18.1285

■ 140.6510,
-54.0579, 72.2201

■ 245.4320, 4.7170,
-19.6729

■ 131.6860,
-60.4842, 80.0824

■ 127.7250,
-62.9684, 83.5562

Harmonies

Analogous

The Analogous color harmony consists of three colors that are next to each other on the color wheel.



199.5000, -11.5855, 29.3795



198.1910, -16.3632, 21.7575



196.4020, -16.4672, 8.4174

Triad

The Triadic color harmony groups three colors that are evenly spaced from another and form a triangle on the color wheel.



198.1910, -16.3632, 21.7575



190.8710, 5.4866, -33.2129



199.6600, 12.4926, 6.4372

Complementary

The Complementary color scheme is a pair of colors which are on the opposite of each other on the color wheel.



198.1910, -16.3632, 21.7575



189.8090, 16.3632, -21.7575

Split Complementary

Split-complementary colors differ from the complementary color scheme. The scheme consists of three colors, the original color and two neighbors of the complement color.



197.1030, 17.2042, -11.4913



198.1910, -16.3632, 21.7575



191.6240, 13.4964, -35.6272

Square

The Square scheme is like the rectangle color scheme, but the four colors are evenly spaced on the color wheel.



198.1910, -16.3632, 21.7575



192.4180, -4.1501, -22.2916



194.1180, 17.6898, -27.2905



201.0980, 4.8817, 20.9621

Rectangle

The Rectangle color scheme consists of four colors that form a rectangle on the color wheel.



198.1910, -16.3632, 21.7575



195.2050, -14.3981, -1.9338



194.1180, 17.6898, -27.2905



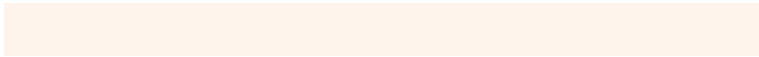
199.0830, 14.2561, 0.8042

Sweetspot

The Sweet Spot groups the original color and five complimentary colors.



198.1910, -16.3632, 21.7575



246.2630, -5.5527, 7.6623



185.9900, 5.4279, 32.4578



122.4090, -3.6526, 4.9033



0.0000, 0.0000, 0.0000



128.0000, 0.0000, 0.0000

Same Dimension

The Same Dimension uses a secret algorithm to generate beautiful new colors.



198.1910, -16.3632, 21.7575



221.3400, -22.3526, 29.5198



214.6270, -24.4661, 7.3431



107.2240, -3.0684, 4.1886



100.7580, -49.6737, 65.9872



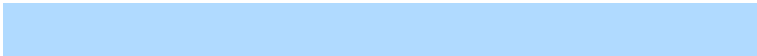
27.8530, -13.7315, 17.6689

Inverse Universe

The Inverse Universe completely reimagines the original color for something new.



189.8090, 16.3632, -21.7575



209.6600, 22.3526, -29.5198



173.3730, 24.4661, -7.3431



105.7760, 3.0684, -4.1886



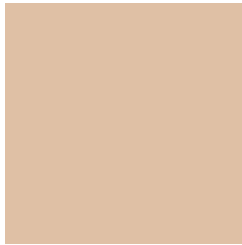
75.2420, 49.6737, -65.9872



20.7340, 13.4421, -18.1837

Previews

White Background



This preview shows how the YUV color 198.1910, -16.3632, 21.7575 looks on a white background.

Color Contrast Check

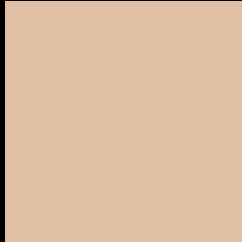
Large Text (above 18pt) WCAG AA × Fail

Any Text WCAG AA × Fail

Large Text (above 18pt) WCAG AAA × Fail

Any Text WCAG AAA × Fail

Black Background



This preview shows how the YUV color 198.1910, -16.3632, 21.7575 looks on a black background.

Color Contrast Check

Large Text (above 18pt) WCAG AA ✓ Pass

Any Text WCAG AA ✓ Pass

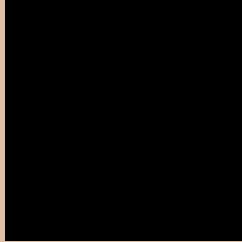
Large Text (above 18pt) WCAG AAA ✓ Pass

Any Text WCAG AAA ✓ Pass

If you want to check with other color combinations, try the [Color Contrast Checker](#).

YUV 198.1910, -16.3632, 21.7575

Background



This preview shows how black text looks on a background with the YUV color 198.1910, -16.3632, 21.7575.



This preview shows how white text looks on a background with the YUV color 198.1910, -16.3632, 21.7575.

Color Blindness Simulation

Color vision deficiency is a very complex topic, and I could not describe the different causes any better than Wikipedia does, so if you want to learn more, you should check out their [article about color blindness](#).

Dichromacy



Original Color

198.1910, -16.3632, 21.7575

Protanopia

196.9830, -14.2886, 9.6619

Deuteranopia

198.5120, -16.5214, 25.8610



Tritanopia

200.5560, 0.2189, 23.1914

Trichromacy



Original Color

198.1910, -16.3632, 21.7575

Protanomaly

197.1900, -14.8837, 13.8654

Deuteranomaly

198.5010, -16.5160, 24.1166

Tritanomaly

199.9490, -5.8909, 22.8467

Monochromacy



Original Color

198.1910, -16.3632, 21.7575

Achromatopsia

198.0000, 0.0000, 0.0000

Achromatomaly

198.1490, -5.9895, 7.7623

CSS Examples

Text

The CSS property to change the color of the text to YUV 198.1910, -16.3632, 21.7575 is called "color". The color property can be set on classes, ids or directly on the HTML element.

This example shows how text in the color `rgb(223, 192, 165)` looks like.

```
.text, #text, p{  
    color:rgb(223, 192, 165)  
}
```

If you want to add a text shadow in that color use the text-shadow property, you can generate a text shadow directly with our [CSS Text Shadow Generator](#).

Here you see how black text with a 4 pixel rgb(223, 192, 165) colored shadow looks like.

```
.shadow{ text-shadow: 4px 4px 2px rgb(223, 192, 165) }
```

Border

The CSS property to change the border of an element to YUV 198.1910, -16.3632, 21.7575 is called "border".

The border property can be set on classes, ids or directly on the HTML element.

This example shows the color as border, it can be applied via the CSS property "border" or "border-color".

```
.border, #border, table{ border:4px solid rgb(223, 192, 165) }
```


If only the border color should be changed use the property `border-color`.

```
.border{ border-color:rgb(223, 192, 165) }
```

If you want to add a box shadow in that color use:

Here you see how a box with a 4 pixel `rgb(223, 192, 165)` colored shadow looks like.

```
.boxshadow{ -moz-box-shadow:4px 4px 4px  
4px rgb(223, 192, 165); -webkit-box-  
shadow:4px 4px 4px 4px rgb(223, 192, 165);  
box-shadow:4px 4px 4px 4px rgb(223, 192,  
165) }
```

Background

The CSS property to change the background color of an element to YUV 198.1910, -16.3632, 21.7575 is called "background". The background property can be set on classes, ids or directly on the HTML element.

```
.background, #background, body{  
background: rgb(223, 192, 165) }
```

If only the background color should be changed can be used:

```
.background{ background-color: rgb(223,  
192, 165) }
```

This example shows the color as background, it is applied via the CSS property "background".

To optimize and compress your CSS code, you can use our [online CSS compressor and optimizer](#) based on csstidy. If you want to create a linear or radial gradient as background or border, check our [CSS Gradient Generator](#).

Hey! You found this booklet interesting? Support Converting Colors with the new Membership Option!

The pro membership hides all ads, plus gives you double the colors in the color bucket, and more awesome pro features!

[Learn more, Memberships starting at \\$2.50/m!](#)

**Follow me
on Twitter!**

@ConvertingColor