

Converting Colors

YUV(198.3810, -14.4848,
25.9759)

Have a look what the booklet for
YUV(198.3810, -14.4848, 25.9759)
contains.

YUV(198.3810, -14.4848, 25.9759)	3
<i>Conversions</i>	4
<i>Details</i>	6
<i>Harmonies</i>	12
<i>Previews</i>	24
<i>Color Blindness Simulation</i>	28
<i>CSS Examples</i>	31

Color

**YUV(198.3810, -14.4848,
25.9759)**

Conversions

Conversions Part 1

Format	Color
Hex	E4BDA9
RGB	228, 189, 169
RGB Percent	89%, 74%, 66%
CMY	0.1059, 0.2588, 0.3373
CMYK	0.00, 0.17, 0.26, 0.11
HSL	20°, 52%, 78%
HSV	20°, 26%, 89%
XYZ	57.3539, 55.7537, 45.2748
YIQ	198.3810, 29.6640, 2.0480

Conversions

Conversions Part 2

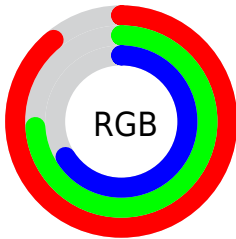
Format	Color
R _Y B	228, 199, 169
Decimal	14990761
CIE Lab	79.47, 10.99, 15.33
CIE LCh	79, 18.866, 54.356
Yxy	55.7537, 0.3621, 0.3520
Android (android.graphics.Color)	4293180841 (0xFFE4BDA9)
YUV	198.3810, -14.4848, 25.9759
Hunter-Lab	74.6684, 6.4388, 16.3177

Details

The YUV color $198.3810, -14.4848, 25.9759$ is a light color, and the websafe version is hex FFCCCC . A complement of this color would be $198.6190, 14.4848, -25.9759$, and the grayscale version is $198.0000, 0.0000, 0.0000$.

A 20% lighter version of the original color is $245.5960, -10.6468, 8.2473$, and $144.5980, -13.6058, 24.0316$ is the 20% darker color. If you saturate the color by 10%, you get $186.9540, -20.1903, 35.9973$, and if you desaturate by 10%, it is $209.8080, -8.7793, 15.9544$.

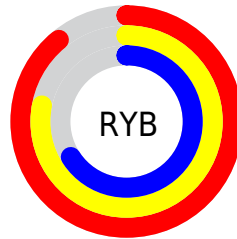
Distribution



Red (89%)

Green (74%)

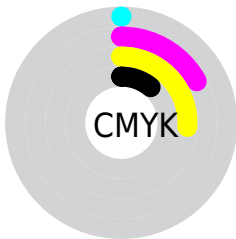
Blue (66%)



Red (89%)

Yellow (78%)

Blue (66%)

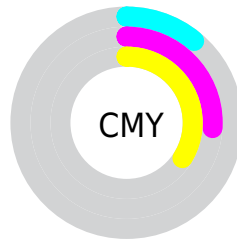


Cyan (0%)

Magenta (17%)

Yellow (26%)

Black (11%)



Cyan (11%)

Magenta (26%)

Yellow (34%)

Brightness & Saturation Gradients

These gradients show how the YUV color 198.3810, -14.4848, 25.9759 changes by changing the brightness by 10 percent. The first figure shows a shift by +10% for each color and the second figure -10%.

Similar to the brightness gradients but the following saturation gradients show a change of the YUV color 198.3810, -14.4848, 25.9759 by changing the saturation by 10% instead.

■ 198.3810,
-14.4848, 25.9759

■ 198.3810,
-14.4848, 25.9759

255.0000, 0.0000,
0.0000

■ 171.1960,
-13.9006, 25.2611

■ 245.5960,
-10.6468, 8.2473

■ 144.5980,
-13.6058, 24.0316

254.7720, -0.8736,
0.2000

■ 118.4130,
-13.0216, 23.3168

■ 93.6300, -12.1426,
21.3725

■ 70.0320, -11.8478,
20.1429

■ 47.2490, -10.9688,
18.1986

■ 25.4940, -12.5685,

17.9838

■ 5.9800, -2.9481,
12.2955

■ 0.0000, 0.0000,
0.0000

■ 198.3810,
-14.4848, 25.9759

■ 198.3810,
-14.4848, 25.9759

■ 186.9540,
-20.1903, 35.9973

■ 209.8080, -8.7793,
15.9544

■ 175.5270,
-25.8958, 46.0188

■ 221.2350, -3.0739,
5.9329

■ 164.2140,
-31.1645, 55.9403

■ 232.5480, 2.1948,
-3.9886

■ 152.7870,
-36.8700, 65.9618

■ 243.4050, 5.7163,
-13.5102

■ 141.3600,
-42.5755, 75.9833

■ 246.9270, 3.9800,
-16.5990

■ 129.9330,
-48.2810, 86.0048

■ 118.5060,
-53.9865, 96.0262

■ 113.3710,
-55.8919, 100.5296

Harmonies

Analogous

The Analogous color harmony consists of three colors that are next to each other on the color wheel.



199.4230, -8.0965, 30.3240



198.3810, -14.4848, 25.9759



196.9190, -17.2151, 14.9800

Triad

The Triadic color harmony groups three colors that are evenly spaced from another and form a triangle on the color wheel.



198.3810, -14.4848, 25.9759



190.7530, 1.1078, -28.7244



198.5880, 14.9931, -2.2697

Complementary

The Complementary color scheme is a pair of colors which are on the opposite of each other on the color wheel.



198.3810, -14.4848, 25.9759



198.6190, 14.4848, -25.9759

Split Complementary

Split-complementary colors differ from the complementary color scheme. The scheme consists of three colors, the original color and two neighbors of the complement color.



194.8740, 17.8101, -19.1835



198.3810, -14.4848, 25.9759



190.4130, 10.1494, -35.4422

Square

The Square scheme is like the rectangle color scheme, but the four colors are evenly spaced on the color wheel.



198.3810, -14.4848, 25.9759



192.7240, -8.2449, -15.5439



192.0420, 16.2483, -31.6088



200.0910, 8.8291, 14.8292

Rectangle

The Rectangle color scheme consists of four colors that form a rectangle on the color wheel.



198.3810, -14.4848, 25.9759



195.2060, -15.8776, 5.9583



192.0420, 16.2483, -31.6088



197.5980, 16.4672, -8.4174

Sweetspot

The Sweet Spot groups the original color and five complimentary colors.



198.3810, -14.4848, 25.9759



245.0890, -4.9739, 8.6919



191.0870, 8.3381, 32.3727



121.2350, -3.0739, 5.9329



0.0000, 0.0000, 0.0000



128.0000, 0.0000, 0.0000

Same Dimension

The Same Dimension uses a secret algorithm to generate beautiful new colors.



198.3810, -14.4848, 25.9759



215.4700, -19.4587, 34.6678



215.4040, -22.8772, 11.0467



108.9360, -2.9264, 5.3181



89.3280, -44.0387, 78.6423



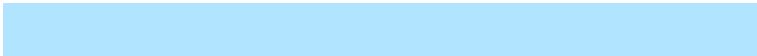
25.2280, -12.4374, 22.6020

Inverse Universe

The Inverse Universe completely reimagines the original color for something new.



198.6190, 14.4848, -25.9759



215.5300, 19.4587, -34.6678



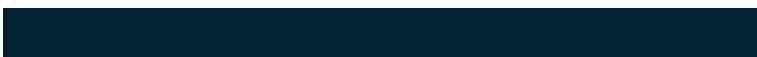
181.5960, 22.8772, -11.0467



109.0640, 2.9264, -5.3181



89.6720, 44.0387, -78.6423



25.7720, 12.4374, -22.6020

Previews

White Background



This preview shows how the YUV color 198.3810, -14.4848, 25.9759 looks on a white background.

Color Contrast Check

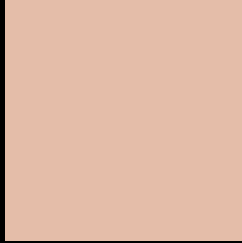
Large Text (above 18pt) WCAG AA × Fail

Any Text WCAG AA × Fail

Large Text (above 18pt) WCAG AAA × Fail

Any Text WCAG AAA × Fail

Black Background



This preview shows how the YUV color 198.3810, -14.4848, 25.9759 looks on a black background.

Color Contrast Check

Large Text (above 18pt) WCAG AA ✓ Pass

Any Text WCAG AA ✓ Pass

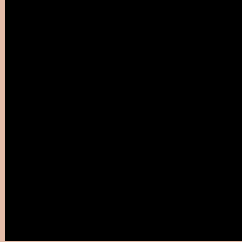
Large Text (above 18pt) WCAG AAA ✓ Pass

Any Text WCAG AAA ✓ Pass

If you want to check with other color combinations, try the [Color Contrast Checker](#).

YUV 198.3810, -14.4848, 25.9759

Background



This preview shows how black text looks on a background with the YUV color 198.3810, -14.4848, 25.9759.



This preview shows how white text looks on a background with the YUV color 198.3810, -14.4848, 25.9759.

25.9759.

Color Blindness Simulation

Color vision deficiency is a very complex topic, and I could not describe the different causes any better than Wikipedia does, so if you want to learn more, you should check out their [article about color blindness](#).

Dichromacy



Original Color

198.3810, -14.4848, 25.9759

Protanopia

196.9550, -11.8098, 7.9325

Deuteranopia

198.3700, -14.4794, 24.2315



Tritanopia

200.3500, -0.6655, 26.8801

Trichromacy



Original Color

198.3810, -14.4848, 25.9759

Protanomaly

197.4720, -12.5577, 14.4951

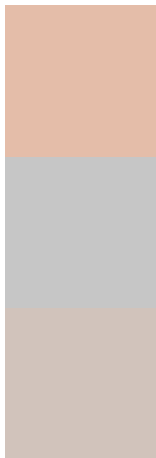
Deuteranomaly

198.6690, -14.6268, 24.8463

Tritanomaly

199.3840, -5.6123, 26.8502

Monochromacy



Original Color

198.3810, -14.4848, 25.9759

Achromatopsia

198.0000, 0.0000, 0.0000

Achromatomaly

198.2740, -5.5581, 9.4067

CSS Examples

Text

The CSS property to change the color of the text to YUV 198.3810, -14.4848, 25.9759 is called "color". The color property can be set on classes, ids or directly on the HTML element.

This example shows how text in the color `rgb(228, 189, 169)` looks like.

```
.text, #text, p{  
    color:rgb(228, 189, 169)  
}
```

If you want to add a text shadow in that color use the text-shadow property, you can generate a text shadow directly with our [CSS Text Shadow Generator](#).

Here you see how black text with a 4 pixel rgb(228, 189, 169) colored shadow looks like.

```
.shadow{ text-shadow: 4px 4px 2px rgb(228, 189, 169) }
```

Border

The CSS property to change the border of an element to YUV 198.3810, -14.4848, 25.9759 is called "border".

The border property can be set on classes, ids or directly on the HTML element.

This example shows the color as border, it can be applied via the CSS property "border" or "border-color".

```
.border, #border, table{ border:4px solid rgb(228, 189, 169) }
```


If only the border color should be changed use the property border-color.

```
.border{ border-color:rgb(228, 189, 169) }
```

If you want to add a box shadow in that color use:

Here you see how a box with a 4 pixel rgb(228, 189, 169) colored shadow looks like.

```
.boxshadow{ -moz-box-shadow:4px 4px 4px  
4px rgb(228, 189, 169); -webkit-box-  
shadow:4px 4px 4px 4px rgb(228, 189, 169);  
box-shadow:4px 4px 4px 4px rgb(228, 189,  
169) }
```

Background

The CSS property to change the background color of an element to YUV 198.3810, -14.4848, 25.9759 is called "background". The background property can be set on classes, ids or directly on the HTML element.

```
.background, #background, body{  
background: rgb(228, 189, 169) }
```

If only the background color should be changed can be used:

```
.background{ background-color: rgb(228,  
189, 169) }
```

This example shows the color as background, it is applied via the CSS property "background".

To optimize and compress your CSS code, you can use our [online CSS compressor and optimizer](#) based on csstidy. If you want to create a linear or radial gradient as background or border, check our [CSS Gradient Generator](#).

Hey! You found this booklet interesting? Support Converting Colors with the new Membership Option!

The pro membership hides all ads, plus gives you double the colors in the color bucket, and more awesome pro features!

[Learn more, Memberships starting at \\$2.50/m!](#)

**Follow me
on Twitter!**

@ConvertingColor