

Converting Colors

YUV(198.4320, -18.4540,
39.0861)

Have a look what the booklet for
YUV(198.4320, -18.4540, 39.0861)
contains.

YUV(198.4320, -18.4540, 39.0861)	3
<i>Conversions</i>	4
<i>Details</i>	6
<i>Harmonies</i>	12
<i>Previews</i>	24
<i>Color Blindness Simulation</i>	28
<i>CSS Examples</i>	31

Color

**YUV(198.4320, -18.4540,
39.0861)**

Conversions

Conversions Part 1

Format	Color
Hex	F3B7A1
RGB	243, 183, 161
RGB Percent	95%, 72%, 63%
CMY	0.0471, 0.2824, 0.3686
CMYK	0.00, 0.25, 0.34, 0.05
HSL	16°, 77%, 79%
HSV	16°, 34%, 95%
XYZ	60.3287, 55.4949, 41.2501
YIQ	198.4320, 42.8220, 5.8780

Conversions

Conversions Part 2

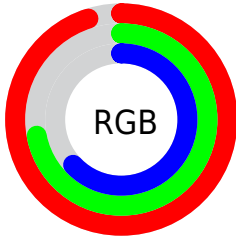
Format	Color
R _Y B	243, 191, 161
Decimal	15972257
CIE Lab	79.33, 18.81, 19.64
CIE LCh	79, 27.196, 46.227
Yxy	55.4949, 0.3841, 0.3533
Android (android.graphics.Color)	4294162337 (0xFFFF3B7A1)
YUV	198.4320, -18.4540, 39.0861
Hunter-Lab	74.4949, 14.1897, 19.3157

Details

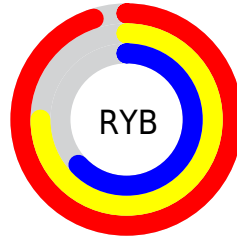
The YUV color **198.4320, -18.4540, 39.0861** is a light color, and the websafe version is hex **FFCCCC**. A complement of this color would be **205.5680, 18.4540, -39.0861**, and the grayscale version is **199.0000, 0.0000, 0.0000**.

A 20% lighter version of the original color is **241.1620, -12.4049, 12.1359**, and **144.0510, -17.2801, 35.9123** is the 20% darker color. If you saturate the color by 10%, you get **185.1300, -23.7281, 50.7520**, and if you desaturate by 10%, it is **211.7340, -13.1799, 27.4203**.

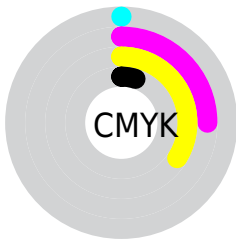
Distribution



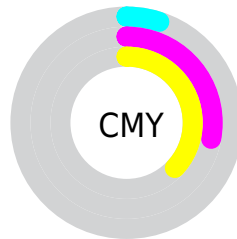
- Red (95%)
- Green (72%)
- Blue (63%)



- Red (95%)
- Yellow (75%)
- Blue (63%)



- Cyan (0%)
- Magenta (25%)
- Yellow (34%)
- Black (5%)



- Cyan (5%)
- Magenta (28%)
- Yellow (37%)

Brightness & Saturation Gradients

These gradients show how the YUV color 198.4320, -18.4540, 39.0861 changes by changing the brightness by 10 percent. The first figure shows a shift by +10% for each color and the second figure -10%.

Similar to the brightness gradients but the following saturation gradients show a change of the YUV color 198.4320, -18.4540, 39.0861 by changing the saturation by 10% instead.

198.4320,
-18.4540, 39.0861

198.4320,
-18.4540, 39.0861

255.0000, 0.0000,
0.0000

170.9480,
-17.7224, 37.7566

241.1620,
-12.4049, 12.1359

144.0510,
-17.2801, 35.9123

253.7460, -4.8048,
1.0998

118.2680,
-16.4011, 33.9680

92.8980, -15.2327,
32.5385

68.8160, -14.2063,
29.9794

46.0330, -13.3273,
28.0351

23.4780, -11.5747,

25.8908

■ 8.7850, -3.8380,
17.7286

■ 0.0000, 0.0000,
0.0000

■ 198.4320,
-18.4540, 39.0861

■ 198.4320,
-18.4540, 39.0861

■ 185.1300,
-23.7281, 50.7520

■ 211.7340,
-13.1799, 27.4203

■ 171.7140,
-29.4390, 62.5178

■ 225.1500, -7.4689,
15.6545

■ 158.9990,
-35.0025, 73.6689

■ 237.8650, -1.9054,
4.5034

■ 145.6970,
-40.2766, 85.3347

■ 250.8250, 2.0583,
-6.8625

■ 132.2810,
-45.9875, 97.1006

■ 251.4120, 1.7689,
-7.3773

■ 118.9790,
-51.2616, 108.7664

■ 110.8120,
-54.6303, 115.9289

Harmonies

Analogous

The Analogous color harmony consists of three colors that are next to each other on the color wheel.



199.5000, -8.1345, 42.5345



198.4320, -18.4540, 39.0861



196.5630, -23.9416, 25.8162

Triad

The Triadic color harmony groups three colors that are evenly spaced from another and form a triangle on the color wheel.



198.4320, -18.4540, 39.0861



187.3020, -1.6279, -37.9759



197.1230, 23.6034, -10.6319

Complementary

The Complementary color scheme is a pair of colors which are on the opposite of each other on the color wheel.



198.4320, -18.4540, 39.0861



205.5680, 18.4540, -39.0861

Split Complementary

Split-complementary colors differ from the complementary color scheme. The scheme consists of three colors, the original color and two neighbors of the complement color.



191.3540, 26.4475, -36.2675



198.4320, -18.4540, 39.0861



185.1720, 12.2402, -52.7708

Square

The Square scheme is like the rectangle color scheme, but the four colors are evenly spaced on the color wheel.



198.4320, -18.4540, 39.0861



190.7040, -14.6441, -16.4034



186.2180, 22.5705, -52.8112



199.9260, 15.8125, 14.9739

Rectangle

The Rectangle color scheme consists of four colors that form a rectangle on the color wheel.



198.4320, -18.4540, 39.0861



195.0730, -24.1930, 13.0910



186.2180, 22.5705, -52.8112



195.4100, 24.9409, -19.6536

Sweetspot

The Sweet Spot groups the original color and five complimentary colors.



198.4320, -18.4540, 39.0861



240.9970, -5.4215, 12.2806



192.3580, 14.1205, 44.4130



119.1320, -3.5161, 7.7772



0.0000, 0.0000, 0.0000



128.0000, 0.0000, 0.0000

Same Dimension

The Same Dimension uses a secret algorithm to generate beautiful new colors.



198.4320, -18.4540, 39.0861



199.3470, -22.8491, 48.8077



222.4990, -30.3190, 17.9794



115.3490, -2.6371, 5.8329



84.9640, -41.8873, 88.6086



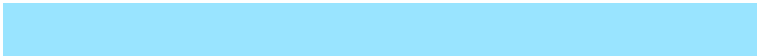
27.0330, -13.3273, 28.0351

Inverse Universe

The Inverse Universe completely reimagines the original color for something new.



205.5680, 18.4540, -39.0861



208.6530, 22.8491, -48.8077



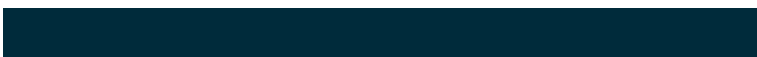
181.5010, 30.3190, -17.9794



116.6510, 2.6371, -5.8329



101.0360, 41.8873, -88.6086



31.9670, 13.3273, -28.0351

Previews

White Background



This preview shows how the YUV color 198.4320, -18.4540, 39.0861 looks on a white background.

Color Contrast Check

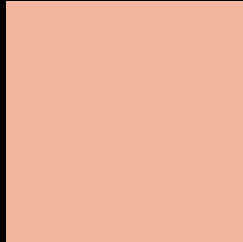
Large Text (above 18pt) WCAG AA × Fail

Any Text WCAG AA × Fail

Large Text (above 18pt) WCAG AAA × Fail

Any Text WCAG AAA × Fail

Black Background



This preview shows how the YUV color 198.4320, -18.4540, 39.0861 looks on a black background.

Color Contrast Check

Large Text (above 18pt) WCAG AA ✓ Pass

Any Text WCAG AA ✓ Pass

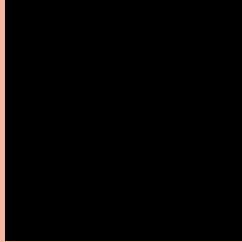
Large Text (above 18pt) WCAG AAA ✓ Pass

Any Text WCAG AAA ✓ Pass

If you want to check with other color combinations, try the [Color Contrast Checker](#).

YUV 198.4320, -18.4540, 39.0861

Background



This preview shows how black text looks on a background with the YUV color 198.4320, -18.4540, 39.0861.



This preview shows how white text looks on a background with the YUV color 198.4320, -18.4540,

Color Blindness Simulation

Color vision deficiency is a very complex topic, and I could not describe the different causes any better than Wikipedia does, so if you want to learn more, you should check out their [article about color blindness](#).

Dichromacy



Original Color

198.4320, -18.4540, 39.0861

Protanopia

196.0970, -13.8518, 9.5619

Deuteranopia

197.6540, -18.5634, 27.4904



Tritanopia

199.9280, -3.9085, 40.4051

Trichromacy



Original Color

198.4320, -18.4540, 39.0861

Protanomaly

196.7070, -15.6316, 20.4280

Deuteranomaly

197.9750, -18.7217, 31.5939

Tritanomaly

199.5490, -9.1447, 39.8605

Monochromacy



Original Color

198.4320, -18.4540, 39.0861

Achromatopsia

198.0000, 0.0000, 0.0000

Achromatomaly

198.3670, -6.5899, 13.7101

CSS Examples

Text

The CSS property to change the color of the text to YUV 198.4320, -18.4540, 39.0861 is called "color". The color property can be set on classes, ids or directly on the HTML element.

This example shows how text in the color `rgb(243, 183, 161)` looks like.

```
.text, #text, p{  
    color:rgb(243, 183, 161)  
}
```

If you want to add a text shadow in that color use the text-shadow property, you can generate a text shadow directly with our [CSS Text Shadow Generator](#).

Here you see how black text with a 4 pixel rgb(243, 183, 161) colored shadow looks like.

```
.shadow{ text-shadow: 4px 4px 2px rgb(243, 183, 161) }
```

Border

The CSS property to change the border of an element to YUV 198.4320, -18.4540, 39.0861 is called "border".

The border property can be set on classes, ids or directly on the HTML element.

This example shows the color as border, it can be applied via the CSS property "border" or "border-color".

```
.border, #border, table{ border:4px solid rgb(243, 183, 161) }
```


If only the border color should be changed use the property `border-color`.

```
.border{ border-color:rgb(243, 183, 161) }
```

If you want to add a box shadow in that color use:

Here you see how a box with a 4 pixel `rgb(243, 183, 161)` colored shadow looks like.

```
.boxshadow{ -moz-box-shadow:4px 4px 4px  
4px rgb(243, 183, 161); -webkit-box-  
shadow:4px 4px 4px 4px rgb(243, 183, 161);  
box-shadow:4px 4px 4px 4px rgb(243, 183,  
161) }
```

Background

The CSS property to change the background color of an element to YUV 198.4320, -18.4540, 39.0861 is called "background". The background property can be set on classes, ids or directly on the HTML element.

```
.background, #background, body{  
background: rgb(243, 183, 161) }
```

If only the background color should be changed can be used:

```
.background{ background-color: rgb(243,  
183, 161) }
```

This example shows the color as background, it is applied via the CSS property "background".

To optimize and compress your CSS code, you can use our [online CSS compressor and optimizer](#) based on csstidy. If you want to create a linear or radial gradient as background or border, check our [CSS Gradient Generator](#).

Hey! You found this booklet interesting? Support Converting Colors with the new Membership Option!

The pro membership hides all ads, plus gives you double the colors in the color bucket, and more awesome pro features!

[Learn more, Memberships starting at \\$2.50/m!](#)

**Follow me
on Twitter!**

@ConvertingColor