

Converting Colors

YUV(198.7400, 1.1142, 16.0140)

Have a look what the booklet for
YUV(198.7400, 1.1142, 16.0140)
contains.

YUV(198.7400, 1.1142, 16.0140)	3
<i>Conversions</i>	4
<i>Details</i>	6
<i>Harmonies</i>	12
<i>Previews</i>	24
<i>Color Blindness Simulation</i>	28
<i>CSS Examples</i>	31

Color

**YUV(198.7400, 1.1142,
16.0140)**

Conversions

Conversions Part 1

Format	Color
Hex	D9BDC9
RGB	217, 189, 201
RGB Percent	85%, 74%, 79%
CMY	0.1490, 0.2588, 0.2118
CMYK	0.00, 0.13, 0.07, 0.15
HSL	334°, 27%, 80%
HSV	334°, 13%, 85%
XYZ	57.3555, 55.3640, 62.9217
YIQ	198.7400, 12.8360, 9.6680

Conversions

Conversions Part 2

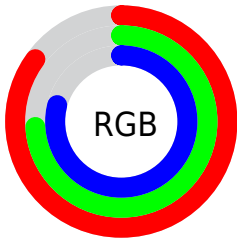
Format	Color
R _Y B	217, 189, 201
Decimal	14269897
CIE Lab	79.25, 11.96, -2.36
CIE LCh	79, 12.190, 348.823
Yxy	55.3640, 0.3265, 0.3152
Android (android.graphics.Color)	4292459977 (0xFFD9BDC9)
YUV	198.7400, 1.1142, 16.0140
Hunter-Lab	74.4070, 7.3819, 1.9467

Details

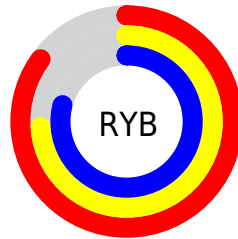
The YUV color $198.7400, 1.1142, 16.0140$ is a light color, and the websafe version is hex `CCCCCC`. A complement of this color would be $207.2600, -1.1142, -16.0140$, and the grayscale version is $199.0000, 0.0000, 0.0000$.

A 20% lighter version of the original color is $249.1300, 2.8939, 5.1480$, and $145.0280, 0.9722, 14.8844$ is the 20% darker color. If you saturate the color by 10%, you get $184.4580, 2.2392, 28.5393$, and if you desaturate by 10%, it is $213.0220, -0.0108, 3.4887$.

Distribution



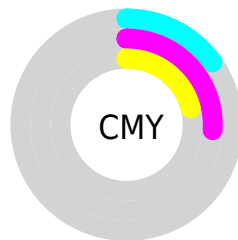
- Red (85%)
- Green (74%)
- Blue (79%)



- Red (85%)
- Yellow (74%)
- Blue (79%)



- Cyan (0%)
- Magenta (13%)
- Yellow (7%)
- Black (15%)



- Cyan (15%)
- Magenta (26%)
- Yellow (21%)

Brightness & Saturation Gradients

These gradients show how the YUV color 198.7400, 1.1142, 16.0140 changes by changing the brightness by 10 percent. The first figure shows a shift by +10% for each color and the second figure -10%.


Similar to the brightness gradients but the following saturation gradients show a change of the YUV color 198.7400, 1.1142, 16.0140 by changing the saturation by 10% instead.

 198.7400, 1.1142,
16.0140


 198.7400, 1.1142,
16.0140

255.0000, 0.0000,
0.0000

 171.4410, 1.2616,
15.3992


 249.1300, 2.8939,
5.1480

 145.0280, 0.9722,
14.8844

 119.0280, 0.9722,
14.8844

 94.4300, 1.2670,
13.6549

 70.4300, 1.2670,
13.6549

 47.7180, 1.1250,
12.5253

 27.0060, 0.9830,

11.3957

■ 6.0230, -1.4903,
11.3808

■ 0.0000, 0.0000,
0.0000

■ 198.7400, 1.1142,
16.0140

■ 198.7400, 1.1142,
16.0140

■ 184.4580, 2.2392,
28.5393

■ 213.0220, -0.0108,
3.4887

■ 170.6490, 2.6380,
40.6498

■ 226.8310, -0.4097,
-8.6218

■ 156.3670, 3.7631,
53.1751

■ 241.1130, -1.5347,
-21.1471

■ 141.9710, 4.4513,
65.8004

■ 243.1820, 3.8543,
-22.9616

■ 128.2760, 5.2869,
77.8109

■ 243.6380, 5.6015,
-23.3615

■ 113.9940, 6.4120,
90.3363

■ 99.5980, 7.1002,
102.9616

■ 85.3160, 8.2252,
115.4869

■ 75.4850, 8.6349,
124.1087

Harmonies

Analogous

The Analogous color harmony consists of three colors that are next to each other on the color wheel.



198.0640, 6.3774, 7.8369



198.7400, 1.1142, 16.0140



198.5680, -4.7170, 19.6729

Triad

The Triadic color harmony groups three colors that are evenly spaced from another and form a triangle on the color wheel.



198.7400, 1.1142, 16.0140



195.3780, -10.0464, 2.2995



193.6860, 9.5218, -20.7726

Complementary

The Complementary color scheme is a pair of colors which are on the opposite of each other on the color wheel.



198.7400, 1.1142, 16.0140



207.2600, -1.1142, -16.0140

Split Complementary

Split-complementary colors differ from the complementary color scheme. The scheme consists of three colors, the original color and two neighbors of the complement color.



192.5350, 5.1592, -21.5172



198.7400, 1.1142, 16.0140



193.9360, -6.3774, -7.8369

Square

The Square scheme is like the rectangle color scheme, but the four colors are evenly spaced on the color wheel.



198.7400, 1.1142, 16.0140



196.5040, -11.0945, 11.8360



192.9610, -0.9668, -16.6288



195.4850, 11.0999, -13.5803

Rectangle

The Rectangle color scheme consists of four colors that form a rectangle on the color wheel.



198.7400, 1.1142, 16.0140



198.1720, -7.4798, 19.1432



192.9610, -0.9668, -16.6288



192.7460, 8.5062, -21.7022

Sweetspot

The Sweet Spot groups the original color and five complimentary colors.



198.7400, 1.1142, 16.0140



248.4460, 0.2731, 5.7479



196.9760, 9.8718, 7.0370



123.4350, 0.2785, 4.0035



0.0000, 0.0000, 0.0000



128.0000, 0.0000, 0.0000

Same Dimension

The Same Dimension uses a secret algorithm to generate beautiful new colors.



198.7400, 1.1142, 16.0140



230.1860, 1.3873, 21.7619



198.5460, -4.7062, 16.1842



102.7450, 0.1257, 6.3626



60.1630, 6.8216, 98.9580



16.0340, 1.9552, 26.2802

Inverse Universe

The Inverse Universe completely reimagines the original color for something new.



198.7400, 1.1142, 16.0140



230.1860, 1.3873, 21.7619



207.4540, 4.7062, -16.1842



102.7450, 0.1257, 6.3626



60.1630, 6.8216, 98.9580



16.0340, 1.9552, 26.2802

Previews

White Background



This preview shows how the YUV color 198.7400, 1.1142, 16.0140 looks on a white background.

Color Contrast Check

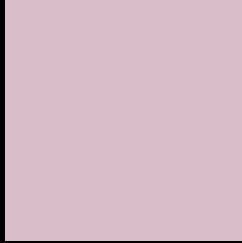
Large Text (above 18pt) WCAG AA × Fail

Any Text WCAG AA × Fail

Large Text (above 18pt) WCAG AAA × Fail

Any Text WCAG AAA × Fail

Black Background



This preview shows how the YUV color 198.7400, 1.1142, 16.0140 looks on a black background.

Color Contrast Check

Large Text (above 18pt) WCAG AA ✓ Pass

Any Text WCAG AA ✓ Pass

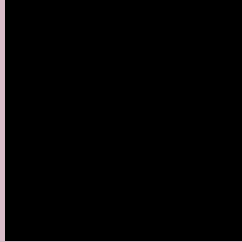
Large Text (above 18pt) WCAG AAA ✓ Pass

Any Text WCAG AAA ✓ Pass

If you want to check with other color combinations, try the [Color Contrast Checker](#).

YUV 198.7400, 1.1142, 16.0140

Background



This preview shows how black text looks on a background with the YUV color 198.7400, 1.1142, 16.0140.



This preview shows how white text looks on a background with the YUV color 198.7400, 1.1142,

Color Blindness Simulation

Color vision deficiency is a very complex topic, and I could not describe the different causes any better than Wikipedia does, so if you want to learn more, you should check out their [article about color blindness](#).

Dichromacy



Original Color

198.7400, 1.1142, 16.0140

Protanopia

196.7380, 4.0732, 0.2298

Deuteranopia

198.1310, 1.4144, 13.0401



Tritanopia

198.9680, 1.9878, 15.8141

Trichromacy



Original Color

198.7400, 1.1142, 16.0140

Protanomaly

197.5430, 3.1833, 5.6628

Deuteranomaly

198.4300, 1.2670, 13.6549

Tritanomaly

198.8540, 1.5510, 15.9140

Monochromacy



Original Color

198.7400, 1.1142, 16.0140

Achromatopsia

199.0000, 0.0000, 0.0000

Achromatomaly

198.8590, 0.5625, 6.2627

CSS Examples

Text

The CSS property to change the color of the text to YUV 198.7400, 1.1142, 16.0140 is called "color". The color property can be set on classes, ids or directly on the HTML element.

This example shows how text in the color `rgb(217, 189, 201)` looks like.

```
.text, #text, p{  
    color:rgb(217, 189, 201)  
}
```

If you want to add a text shadow in that color use the text-shadow property, you can generate a text shadow directly with our [CSS Text Shadow Generator](#).

Here you see how black text with a 4 pixel rgb(217, 189, 201) colored shadow looks like.

```
.shadow{ text-shadow: 4px 4px 2px rgb(217, 189, 201) }
```

Border

The CSS property to change the border of an element to YUV 198.7400, 1.1142, 16.0140 is called "border". The border property can be set on classes, ids or directly on the HTML element.

This example shows the color as border, it can be applied via the CSS property "border" or "border-color".

```
.border, #border, table{ border:4px solid rgb(217, 189, 201) }
```


If only the border color should be changed use the property `border-color`.

```
.border{ border-color:rgb(217, 189, 201) }
```

If you want to add a box shadow in that color use:

Here you see how a box with a 4 pixel `rgb(217, 189, 201)` colored shadow looks like.

```
.boxshadow{ -moz-box-shadow:4px 4px 4px  
4px rgb(217, 189, 201); -webkit-box-  
shadow:4px 4px 4px 4px rgb(217, 189, 201);  
box-shadow:4px 4px 4px 4px rgb(217, 189,  
201) }
```

Background

The CSS property to change the background color of an element to YUV 198.7400, 1.1142, 16.0140 is called "background". The background property can be set on classes, ids or directly on the HTML element.

```
.background, #background, body{  
background: rgb(217, 189, 201) }
```

If only the background color should be changed can be used:

```
.background{ background-color: rgb(217,  
189, 201) }
```

This example shows the color as background, it is applied via the CSS property "background".

To optimize and compress your CSS code, you can use our [online CSS compressor and optimizer](#) based on csstidy. If you want to create a linear or radial gradient as background or border, check our [CSS Gradient Generator](#).

Hey! You found this booklet interesting? Support Converting Colors with the new Membership Option!

The pro membership hides all ads, plus gives you double the colors in the color bucket, and more awesome pro features!

[Learn more, Memberships starting at \\$2.50/m!](#)

**Follow me
on Twitter!**

@ConvertingColor