

Converting Colors

YUV(198.8470, -11.2636,
19.4282)

Have a look what the booklet for
YUV(198.8470, -11.2636, 19.4282)
contains.

YUV(198.8470, -11.2636, 19.4282)	3
<i>Conversions</i>	4
<i>Details</i>	6
<i>Harmonies</i>	12
<i>Previews</i>	24
<i>Color Blindness Simulation</i>	28
<i>CSS Examples</i>	31

Color

**YUV(198.8470, -11.2636,
19.4282)**

Conversions

Conversions Part 1

Format	Color
Hex	DDC0B0
RGB	221, 192, 176
RGB Percent	87%, 75%, 69%
CMY	0.1333, 0.2471, 0.3098
CMYK	0.00, 0.13, 0.20, 0.13
HSL	21°, 40%, 78%
HSV	21°, 20%, 87%
XYZ	56.5049, 56.2060, 48.9450
YIQ	198.8470, 22.4200, 1.1720

Conversions

Conversions Part 2

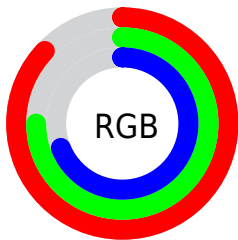
Format	Color
R _Y B	221, 201, 176
Decimal	14532784
CIE Lab	79.73, 7.79, 11.85
CIE LCh	80, 14.177, 56.674
Yxy	56.2060, 0.3495, 0.3477
Android (android.graphics.Color)	4292722864 (0xFFDDC0B0)
YUV	198.8470, -11.2636, 19.4282
Hunter-Lab	74.9707, 3.3356, 13.7717

Details

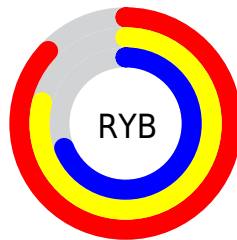
The YUV color $198.8470, -11.2636, 19.4282$ is a light color, and the websafe version is hex FFCCCC . A complement of this color would be $198.1530, 11.2636, -19.4282$, and the grayscale version is $199.0000, 0.0000, 0.0000$.

A 20% lighter version of the original color is $248.2690, -8.0206, 5.9031$, and $144.9500, -10.8213, 17.5839$ is the 20% darker color. If you saturate the color by 10%, you get $188.1210, -16.8217, 28.8349$, and if you desaturate by 10%, it is $209.5730, -5.7055, 10.0215$.

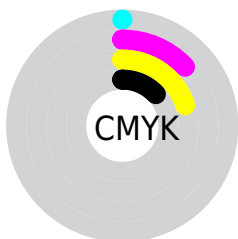
Distribution



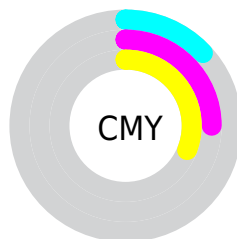
- Red (87%)
- Green (75%)
- Blue (69%)



- Red (87%)
- Yellow (79%)
- Blue (69%)



- Cyan (0%)
- Magenta (13%)
- Yellow (20%)
- Black (13%)



- Cyan (13%)
- Magenta (25%)
- Yellow (31%)

Brightness & Saturation Gradients

These gradients show how the YUV color 198.8470, -11.2636, 19.4282 changes by changing the brightness by 10 percent. The first figure shows a shift by +10% for each color and the second figure -10%.

Similar to the brightness gradients but the following saturation gradients show a change of the YUV color 198.8470, -11.2636, 19.4282 by changing the saturation by 10% instead.

■ 198.8470,
-11.2636, 19.4282

■ 198.8470,
-11.2636, 19.4282

255.0000, 0.0000,
0.0000

■ 171.5480,
-11.1162, 18.8134

■ 248.2690, -8.0206,
5.9031

■ 144.9500,
-10.8213, 17.5839

■ 119.1780, -9.9478,
17.3839

■ 94.5800, -9.6529,
16.1543

■ 70.3950, -9.0687,
15.4396

■ 47.9110, -8.3371,
14.1101

■ 26.8570, -9.7895,

13.2804

■ 4.7840, -2.3585,
9.8364

■ 0.0000, 0.0000,
0.0000

■ 198.8470,
-11.2636, 19.4282

■ 198.8470,
-11.2636, 19.4282

■ 188.1210,
-16.8217, 28.8349

■ 209.5730, -5.7055,
10.0215

■ 177.3950,
-22.3797, 38.2416

■ 220.2990, -0.1474,
0.6148

■ 166.0820,
-27.6484, 48.1631

■ 231.6120, 5.1213,
-9.3067

■ 155.3560,
-33.2065, 57.5698

■ 241.3120, 6.7482,
-17.8136

■ 144.6300,
-38.7646, 66.9765

■ 244.8340, 5.0118,
-20.9024

■ 133.7900,
-44.7595, 76.4832

■ 122.4770,
-50.0282, 86.4047

■ 112.4520,
-55.4388, 95.1966

Harmonies

Analogous

The Analogous color harmony consists of three colors that are next to each other on the color wheel.



199.7210, -6.7645, 23.0467



198.8470, -11.2636, 19.4282



197.3360, -12.9836, 11.1063

Triad

The Triadic color harmony groups three colors that are evenly spaced from another and form a triangle on the color wheel.



198.8470, -11.2636, 19.4282



193.2100, 1.3755, -21.2322



198.8610, 10.9145, -0.7551

Complementary

The Complementary color scheme is a pair of colors which are on the opposite of each other on the color wheel.



198.8470, -11.2636, 19.4282



198.1530, 11.2636, -19.4282

Split Complementary

Split-complementary colors differ from the complementary color scheme. The scheme consists of three colors, the original color and two neighbors of the complement color.



196.7670, 13.4259, -12.9507



198.8470, -11.2636, 19.4282



193.1970, 7.7909, -25.6058

Square

The Square scheme is like the rectangle color scheme, but the four colors are evenly spaced on the color wheel.



198.8470, -11.2636, 19.4282



194.4300, -5.6350, -12.6551



194.6580, 12.0006, -22.5021



200.2710, 5.7824, 12.0403

Rectangle

The Rectangle color scheme consists of four colors that form a rectangle on the color wheel.



198.8470, -11.2636, 19.4282



196.2210, -11.9410, 3.3142



194.6580, 12.0006, -22.5021



198.1810, 12.2358, -4.5437

Sweetspot

The Sweet Spot groups the original color and five complimentary colors.



198.8470, -11.2636, 19.4282



247.4200, -3.6581, 6.6477



192.7610, 6.0338, 24.7656



123.4520, -2.1948, 3.9886



0.0000, 0.0000, 0.0000



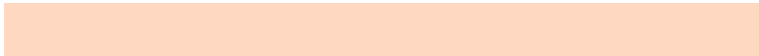
128.0000, 0.0000, 0.0000

Same Dimension

The Same Dimension uses a secret algorithm to generate beautiful new colors.



198.8470, -11.2636, 19.4282



225.1530, -15.3584, 26.1758



211.7610, -17.6302, 8.1026



104.6370, -2.7790, 4.7034



88.1210, -43.4437, 74.4389



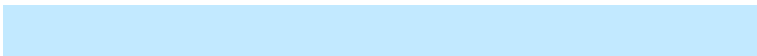
23.1460, -11.4110, 20.0430

Inverse Universe

The Inverse Universe completely reimagines the original color for something new.



198.1530, 11.2636, -19.4282



223.8470, 15.3584, -26.1758



185.2390, 17.6302, -8.1026



104.3630, 2.7790, -4.7034



85.4660, 43.1543, -74.9537



22.8540, 11.4110, -20.0430

Previews

White Background



This preview shows how the YUV color 198.8470, -11.2636, 19.4282 looks on a white background.

Color Contrast Check

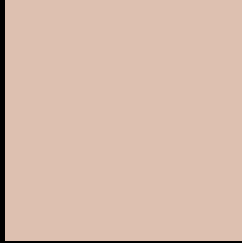
Large Text (above 18pt) WCAG AA × Fail

Any Text WCAG AA × Fail

Large Text (above 18pt) WCAG AAA × Fail

Any Text WCAG AAA × Fail

Black Background



This preview shows how the YUV color 198.8470, -11.2636, 19.4282 looks on a black background.

Color Contrast Check

Large Text (above 18pt) WCAG AA ✓ Pass

Any Text WCAG AA ✓ Pass

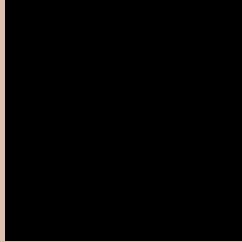
Large Text (above 18pt) WCAG AAA ✓ Pass

Any Text WCAG AAA ✓ Pass

If you want to check with other color combinations, try the [Color Contrast Checker](#).

YUV 198.8470, -11.2636, 19.4282

Background



This preview shows how black text looks on a background with the YUV color 198.8470, -11.2636, 19.4282.



This preview shows how white text looks on a background with the YUV color 198.8470, -11.2636, 19.4282.

Color Blindness Simulation

Color vision deficiency is a very complex topic, and I could not describe the different causes any better than Wikipedia does, so if you want to learn more, you should check out their [article about color blindness](#).

Dichromacy



Original Color

198.8470, -11.2636, 19.4282

Protanopia

197.6390, -9.1890, 7.3326

Deuteranopia

199.4560, -11.5638, 22.4021



Tritanopia

200.4740, 1.2453, 20.6323

Trichromacy



Original Color

198.8470, -11.2636, 19.4282

Protanomaly

197.8460, -9.7841, 11.5361

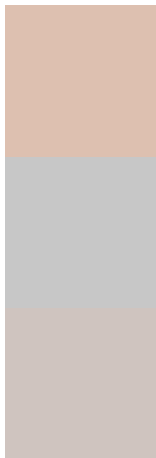
Deuteranomaly

199.1570, -11.4164, 21.7873

Tritanomaly

199.6220, -3.2646, 20.5025

Monochromacy



Original Color

198.8470, -11.2636, 19.4282

Achromatopsia

199.0000, 0.0000, 0.0000

Achromatomaly

198.7190, -3.8055, 7.2624

CSS Examples

Text

The CSS property to change the color of the text to YUV 198.8470, -11.2636, 19.4282 is called "color". The color property can be set on classes, ids or directly on the HTML element.

This example shows how text in the color `rgb(221, 192, 176)` looks like.

```
.text, #text, p{  
    color:rgb(221, 192, 176)  
}
```

If you want to add a text shadow in that color use the text-shadow property, you can generate a text shadow directly with our [CSS Text Shadow Generator](#).

Here you see how black text with a 4 pixel rgb(221, 192, 176) colored shadow looks like.

```
.shadow{ text-shadow: 4px 4px 2px rgb(221, 192, 176) }
```

Border

The CSS property to change the border of an element to YUV 198.8470, -11.2636, 19.4282 is called "border".

The border property can be set on classes, ids or directly on the HTML element.

This example shows the color as border, it can be applied via the CSS property "border" or "border-color".

```
.border, #border, table{ border:4px solid rgb(221, 192, 176) }
```


If only the border color should be changed use the property `border-color`.

```
.border{ border-color:rgb(221, 192, 176) }
```

If you want to add a box shadow in that color use:

Here you see how a box with a 4 pixel `rgb(221, 192, 176)` colored shadow looks like.

```
.boxshadow{ -moz-box-shadow:4px 4px 4px 4px rgb(221, 192, 176); -webkit-box-shadow:4px 4px 4px 4px rgb(221, 192, 176); box-shadow:4px 4px 4px 4px rgb(221, 192, 176) }
```

Background

The CSS property to change the background color of an element to YUV 198.8470, -11.2636, 19.4282 is called "background". The background property can be set on classes, ids or directly on the HTML element.

```
.background, #background, body{  
background: rgb(221, 192, 176) }
```

If only the background color should be changed can be used:

```
.background{ background-color: rgb(221,  
192, 176) }
```

This example shows the color as background, it is applied via the CSS property "background".

To optimize and compress your CSS code, you can use our [online CSS compressor and optimizer](#) based on csstidy. If you want to create a linear or radial gradient as background or border, check our [CSS Gradient Generator](#).

Hey! You found this booklet interesting? Support Converting Colors with the new Membership Option!

The pro membership hides all ads, plus gives you double the colors in the color bucket, and more awesome pro features!

[Learn more, Memberships starting at \\$2.50/m!](#)

**Follow me
on Twitter!**

@ConvertingColor