

Converting Colors

YUV(198.9190, -13.7641,
28.1350)

Have a look what the booklet for
YUV(198.9190, -13.7641, 28.1350)
contains.

YUV(198.9190, -13.7641, 28.1350)	3
<i>Conversions</i>	4
<i>Details</i>	6
<i>Harmonies</i>	12
<i>Previews</i>	24
<i>Color Blindness Simulation</i>	28
<i>CSS Examples</i>	31

Color

**YUV(198.9190, -13.7641,
28.1350)**

Conversions

Conversions Part 1

Format	Color
Hex	E7BCAB
RGB	231, 188, 171
RGB Percent	91%, 74%, 67%
CMY	0.0941, 0.2627, 0.3294
CMYK	0.00, 0.19, 0.26, 0.09
HSL	17°, 56%, 79%
HSV	17°, 26%, 91%
XYZ	58.2889, 55.8956, 46.2449
YIQ	198.9190, 31.0850, 3.8290

Conversions

Conversions Part 2

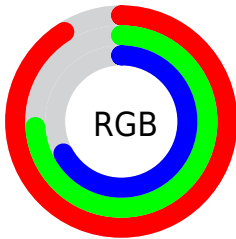
Format	Color
R_{YB}	231, 195, 171
Decimal	15187115
CIE _{Lab}	79.55, 12.93, 14.41
CIE _{LCh}	80, 19.362, 48.106
Yxy	55.8956, 0.3633, 0.3484
Android (android.graphics.Color)	4293377195 (0xFFE7BCAB)
YUV	198.9190, -13.7641, 28.1350
Hunter-Lab	74.7634, 8.3307, 15.6606

Details

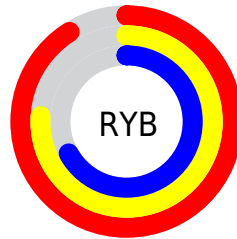
The YUV color **198.9190, -13.7641, 28.1350** is a light color, and the websafe version is hex **FFCCCC**. A complement of this color would be **203.0810, 13.7641, -28.1350**, and the grayscale version is **199.0000, 0.0000, 0.0000**.

A 20% lighter version of the original color is **245.2370, -9.4838, 8.5622**, and **145.1360, -12.8850, 26.1907** is the 20% darker color. If you saturate the color by 10%, you get **186.3180, -18.8908, 39.1861**, and if you desaturate by 10%, it is **211.5200, -8.6374, 17.0840**.

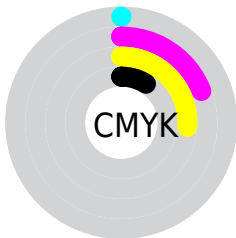
Distribution



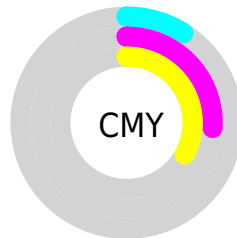
- Red (91%)
- Green (74%)
- Blue (67%)



- Red (91%)
- Yellow (76%)
- Blue (67%)



- Cyan (0%)
- Magenta (19%)
- Yellow (26%)
- Black (9%)



- Cyan (9%)
- Magenta (26%)
- Yellow (33%)

Brightness & Saturation Gradients

These gradients show how the YUV color 198.9190, -13.7641, 28.1350 changes by changing the brightness by 10 percent. The first figure shows a shift by +10% for each color and the second figure -10%.

Similar to the brightness gradients but the following saturation gradients show a change of the YUV color 198.9190, -13.7641, 28.1350 by changing the saturation by 10% instead.

■ 198.9190,
-13.7641, 28.1350

■ 198.9190,
-13.7641, 28.1350

255.0000, 0.0000,
0.0000

■ 171.3210,
-13.4693, 26.9055

■ 245.2370, -9.4838,
8.5622

■ 145.1360,
-12.8850, 26.1907

■ 118.6520,
-12.1534, 24.8612

■ 94.0540, -11.8586,
23.6316

■ 70.2710, -10.9796,
21.6873

■ 47.4880, -10.1006,
19.7430

■ 25.2060, -12.4266,

19.1133

■ 6.8770, -3.3904,
14.1399

■ 0.0000, 0.0000,
0.0000

■ 198.9190,
-13.7641, 28.1350

■ 198.9190,
-13.7641, 28.1350

■ 186.3180,
-18.8908, 39.1861

■ 211.5200, -8.6374,
17.0840

■ 174.3040,
-24.3069, 49.7224

■ 223.5340, -3.2213,
6.5477

■ 161.7030,
-29.4336, 60.7735

■ 236.1350, 1.9054,
-4.5034

■ 149.6890,
-34.8497, 71.3097

■ 247.2370, 3.8272,
-14.2398

■ 136.9740,
-40.4132, 82.4608

■ 247.8240, 3.5378,
-14.7546

■ 124.9600,
-45.8293, 92.9971

■ 112.3590,
-50.9560, 104.0482

■ 107.2240,
-52.8614, 108.5516

Harmonies

Analogous

The Analogous color harmony consists of three colors that are next to each other on the color wheel.



200.1780, -6.4968, 30.5389



198.9190, -13.7641, 28.1350



196.9410, -17.2259, 18.4687

Triad

The Triadic color harmony groups three colors that are evenly spaced from another and form a triangle on the color wheel.



198.9190, -13.7641, 28.1350



190.8950, -0.9342, -27.0949



197.9080, 16.3144, -6.0583

Complementary

The Complementary color scheme is a pair of colors which are on the opposite of each other on the color wheel.



198.9190, -13.7641, 28.1350



203.0810, 13.7641, -28.1350

Split Complementary

Split-complementary colors differ from the complementary color scheme. The scheme consists of three colors, the original color and two neighbors of the complement color.



194.6670, 18.4052, -23.3870



198.9190, -13.7641, 28.1350



190.6580, 8.5496, -35.6571

Square

The Square scheme is like the rectangle color scheme, but the four colors are evenly spaced on the color wheel.



198.9190, -13.7641, 28.1350



192.9910, -9.8556, -12.2701



191.2050, 15.6749, -34.3828



199.8240, 10.4398, 11.5554

Rectangle

The Rectangle color scheme consists of four colors that form a rectangle on the color wheel.



198.9190, -13.7641, 28.1350



195.7010, -16.6146, 9.0322



191.2050, 15.6749, -34.3828



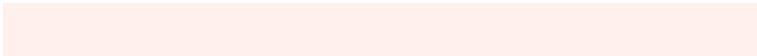
196.9180, 17.7884, -12.2061

Sweetspot

The Sweet Spot groups the original color and five complimentary colors.



198.9190, -13.7641, 28.1350



243.9150, -4.3951, 9.7215



193.8420, 9.9379, 32.5876



120.6480, -2.7845, 6.4477



0.0000, 0.0000, 0.0000



128.0000, 0.0000, 0.0000

Same Dimension

The Same Dimension uses a secret algorithm to generate beautiful new colors.



198.9190, -13.7641, 28.1350



212.5350, -18.0118, 37.2418



216.5290, -22.4458, 12.6911



108.9360, -2.9264, 5.3181



83.4580, -41.1448, 83.7903



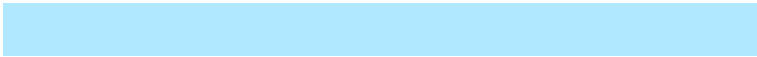
23.4670, -11.5692, 24.1464

Inverse Universe

The Inverse Universe completely reimagines the original color for something new.



203.0810, 13.7641, -28.1350



218.4650, 18.0118, -37.2418



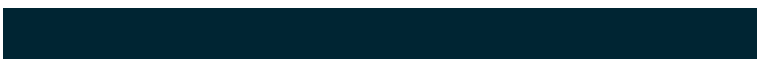
185.4710, 22.4458, -12.6911



109.0640, 2.9264, -5.3181



95.5420, 41.1448, -83.7903



27.5330, 11.5692, -24.1464

Previews

White Background



This preview shows how the YUV color 198.9190, -13.7641, 28.1350 looks on a white background.

Color Contrast Check

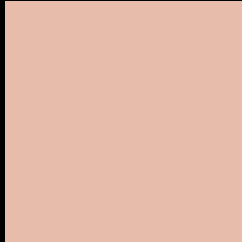
Large Text (above 18pt) WCAG AA × Fail

Any Text WCAG AA × Fail

Large Text (above 18pt) WCAG AAA × Fail

Any Text WCAG AAA × Fail

Black Background



This preview shows how the YUV color 198.9190, -13.7641, 28.1350 looks on a black background.

Color Contrast Check

Large Text (above 18pt) WCAG AA ✓ Pass

Any Text WCAG AA ✓ Pass

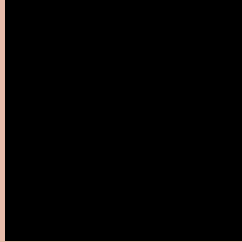
Large Text (above 18pt) WCAG AAA ✓ Pass

Any Text WCAG AAA ✓ Pass

If you want to check with other color combinations, try the [Color Contrast Checker](#).

YUV 198.9190, -13.7641, 28.1350

Background



This preview shows how black text looks on a background with the YUV color 198.9190, -13.7641, 28.1350.



This preview shows how white text looks on a background with the YUV color 198.9190, -13.7641, 28.1350.

Color Blindness Simulation

Color vision deficiency is a very complex topic, and I could not describe the different causes any better than Wikipedia does, so if you want to learn more, you should check out their [article about color blindness](#).

Dichromacy



Original Color

198.9190, -13.7641, 28.1350

Protanopia

197.1830, -10.9362, 7.7325

Deuteranopia

198.5980, -13.6058, 24.0316



Tritanopia

200.5460, -1.2552, 29.3392

Trichromacy



Original Color

198.9190, -13.7641, 28.1350

Protanomaly

197.9990, -11.8315, 14.9099

Deuteranomaly

198.6090, -13.6112, 25.7759

Tritanomaly

199.6940, -5.7651, 29.2094

Monochromacy



Original Color

198.9190, -13.7641, 28.1350

Achromatopsia

199.0000, 0.0000, 0.0000

Achromatomaly

199.1000, -4.9793, 10.4363

CSS Examples

Text

The CSS property to change the color of the text to YUV 198.9190, -13.7641, 28.1350 is called "color". The color property can be set on classes, ids or directly on the HTML element.

This example shows how text in the color `rgb(231, 188, 171)` looks like.

```
.text, #text, p{  
    color:rgb(231, 188, 171)  
}
```

If you want to add a text shadow in that color use the text-shadow property, you can generate a text shadow directly with our [CSS Text Shadow Generator](#).

Here you see how black text with a 4 pixel rgb(231, 188, 171) colored shadow looks like.

```
.shadow{ text-shadow: 4px 4px 2px rgb(231, 188, 171) }
```

Border

The CSS property to change the border of an element to YUV 198.9190, -13.7641, 28.1350 is called "border".

The border property can be set on classes, ids or directly on the HTML element.

This example shows the color as border, it can be applied via the CSS property "border" or "border-color".

```
.border, #border, table{ border:4px solid rgb(231, 188, 171) }
```


If only the border color should be changed use the property `border-color`.

```
.border{ border-color:rgb(231, 188, 171) }
```

If you want to add a box shadow in that color use:

Here you see how a box with a 4 pixel `rgb(231, 188, 171)` colored shadow looks like.

```
.boxshadow{ -moz-box-shadow:4px 4px 4px 4px rgb(231, 188, 171); -webkit-box-shadow:4px 4px 4px 4px rgb(231, 188, 171); box-shadow:4px 4px 4px 4px rgb(231, 188, 171) }
```

Background

The CSS property to change the background color of an element to YUV 198.9190, -13.7641, 28.1350 is called "background". The background property can be set on classes, ids or directly on the HTML element.

```
.background, #background, body{  
background: rgb(231, 188, 171) }
```

If only the background color should be changed can be used:

```
.background{ background-color: rgb(231,  
188, 171) }
```

This example shows the color as background, it is applied via the CSS property "background".

To optimize and compress your CSS code, you can use our [online CSS compressor and optimizer](#) based on csstidy. If you want to create a linear or radial gradient as background or border, check our [CSS Gradient Generator](#).

Hey! You found this booklet interesting? Support Converting Colors with the new Membership Option!

The pro membership hides all ads, plus gives you double the colors in the color bucket, and more awesome pro features!

[Learn more, Memberships starting at \\$2.50/m!](#)

**Follow me
on Twitter!**

@ConvertingColor