

Converting Colors

YUV(199.1050, -19.2788,
23.5869)

Have a look what the booklet for
YUV(199.1050, -19.2788, 23.5869)
contains.

YUV(199.1050, -19.2788, 23.5869)	3
<i>Conversions</i>	4
<i>Details</i>	6
<i>Harmonies</i>	12
<i>Previews</i>	24
<i>Color Blindness Simulation</i>	28
<i>CSS Examples</i>	31

Color

**YUV(199.1050, -19.2788,
23.5869)**

Conversions

Conversions Part 1

Format	Color
Hex	E2C1A0
RGB	226, 193, 160
RGB Percent	89%, 76%, 63%
CMY	0.1137, 0.2431, 0.3725
CMYK	0.00, 0.15, 0.29, 0.11
HSL	30°, 53%, 76%
HSV	30°, 29%, 89%
XYZ	56.7792, 56.8467, 41.2376
YIQ	199.1050, 30.2610, -3.2670

Conversions

Conversions Part 2

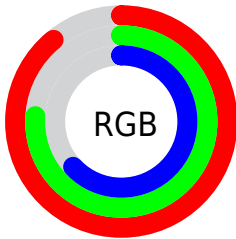
Format	Color
R _Y B	226, 226, 160
Decimal	14860704
CIE Lab	80.09, 6.91, 20.98
CIE LCh	80, 22.084, 71.776
Yxy	56.8467, 0.3666, 0.3671
Android (android.graphics.Color)	4293050784 (0xFFE2C1A0)
YUV	199.1050, -19.2788, 23.5869
Hunter-Lab	75.3968, 2.4789, 20.3496

Details

The YUV color $199.1050, -19.2788, 23.5869$ is a light color, and the websafe version is hex FFCC99 . A complement of this color would be $186.8950, 19.2788, -23.5869$, and the grayscale version is $199.0000, 0.0000, 0.0000$.

A 20% lighter version of the original color is $246.9180, -15.7356, 7.0879$, and $145.3220, -18.3997, 21.6426$ is the 20% darker color. If you saturate the color by 10%, you get $190.0260, -26.1418, 31.5492$, and if you desaturate by 10%, it is $208.1840, -12.4157, 15.6246$.

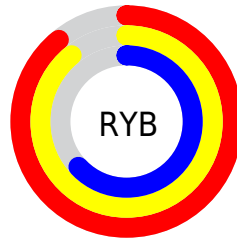
Distribution



Red (89%)

Green (76%)

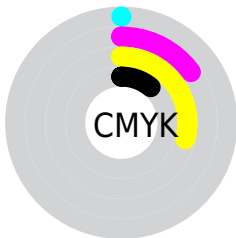
Blue (63%)



Red (89%)

Yellow (89%)

Blue (63%)

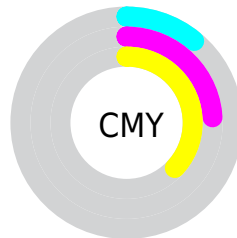


Cyan (0%)

Magenta (15%)

Yellow (29%)

Black (11%)



Cyan (11%)

Magenta (24%)

Yellow (37%)

Brightness & Saturation Gradients

These gradients show how the YUV color 199.1050, -19.2788, 23.5869 changes by changing the brightness by 10 percent. The first figure shows a shift by +10% for each color and the second figure -10%.

Similar to the brightness gradients but the following saturation gradients show a change of the YUV color 199.1050, -19.2788, 23.5869 by changing the saturation by 10% instead.

199.1050,
-19.2788, 23.5869

199.1050,
-19.2788, 23.5869

255.0000, 0.0000,
0.0000

171.9200,
-18.6946, 22.8722

246.9180,
-15.7356, 7.0879

145.3220,
-18.3997, 21.6426

253.6320, -5.2416,
1.1997

119.2510,
-17.3787, 20.8279

94.4680, -16.4997,
18.8836

70.2830, -15.9155,
18.1688

47.5000, -15.0365,
16.2245

26.3580, -12.9945,

14.5950

■ 5.0830, -2.5059,
10.4512

■ 0.0000, 0.0000,
0.0000

■ 199.1050,
-19.2788, 23.5869

■ 199.1050,
-19.2788, 23.5869

■ 190.0260,
-26.1418, 31.5492

■ 208.1840,
-12.4157, 15.6246

■ 180.4740,
-32.2787, 39.9263

■ 217.7360, -6.2788,
7.2475

■ 171.3950,
-39.1417, 47.8886

■ 226.8150, 0.5842,
-0.7148

■ 162.4300,
-45.5680, 55.7509

■ 235.7800, 7.0105,
-8.5771

■ 153.3510,
-52.4310, 63.7132

■ 243.3940, 5.7218,
-15.2545

■ 143.6850,
-59.0047, 72.1903

■ 246.3290, 4.2748,
-17.8285

■ 134.7200,
-65.4310, 80.0526

■ 133.9050,
-66.0152, 80.7673

Harmonies

Analogous

The Analogous color harmony consists of three colors that are next to each other on the color wheel.



200.8380, -14.2171, 33.4681



199.1050, -19.2788, 23.5869



197.0060, -19.2300, 7.8877

Triad

The Triadic color harmony groups three colors that are evenly spaced from another and form a triangle on the color wheel.



199.1050, -19.2788, 23.5869



190.6960, 7.5449, -40.0754



201.6110, 13.5028, 9.1112

Complementary

The Complementary color scheme is a pair of colors which are on the opposite of each other on the color wheel.



199.1050, -19.2788, 23.5869



186.8950, 19.2788, -23.5869

Split Complementary

Split-complementary colors differ from the complementary color scheme. The scheme consists of three colors, the original color and two neighbors of the complement color.



199.0860, 19.6776, -11.4764



199.1050, -19.2788, 23.5869



191.3890, 16.5702, -41.5602

Square

The Square scheme is like the rectangle color scheme, but the four colors are evenly spaced on the color wheel.



199.1050, -19.2788, 23.5869



191.6130, -3.2602, -27.7246



194.6060, 20.9002, -30.3495



202.7180, 4.5760, 25.6803

Rectangle

The Rectangle color scheme consists of four colors that form a rectangle on the color wheel.



199.1050, -19.2788, 23.5869



195.4390, -15.9924, -3.8930



194.6060, 20.9002, -30.3495



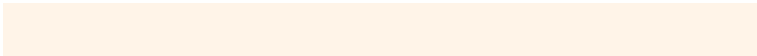
200.9630, 16.2872, 2.6634

Sweetspot

The Sweet Spot groups the original color and five complimentary colors.



199.1050, -19.2788, 23.5869



245.9210, -6.8631, 7.9623



183.4960, 4.6855, 37.2760



121.5940, -4.2368, 5.6181



0.0000, 0.0000, 0.0000



128.0000, 0.0000, 0.0000

Same Dimension

The Same Dimension uses a secret algorithm to generate beautiful new colors.



199.1050, -19.2788, 23.5869



218.4390, -25.8524, 32.0640



218.4760, -28.8287, 6.5985



107.8110, -3.3578, 3.6738



104.2800, -51.4100, 62.8984



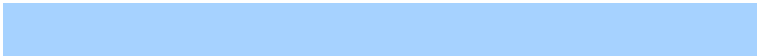
28.4400, -14.0209, 17.1541

Inverse Universe

The Inverse Universe completely reimagines the original color for something new.



186.8950, 19.2788, -23.5869



201.9740, 26.1418, -31.5492



167.5240, 28.8287, -6.5985



105.7760, 3.0684, -4.1886



71.7200, 51.4100, -62.8984



19.5600, 14.0209, -17.1541

Previews

White Background



This preview shows how the YUV color 199.1050, -19.2788, 23.5869 looks on a white background.

Color Contrast Check

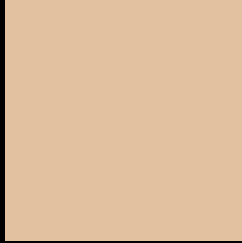
Large Text (above 18pt) WCAG AA × Fail

Any Text WCAG AA × Fail

Large Text (above 18pt) WCAG AAA × Fail

Any Text WCAG AAA × Fail

Black Background



This preview shows how the YUV color 199.1050, -19.2788, 23.5869 looks on a black background.

Color Contrast Check

Large Text (above 18pt) WCAG AA ✓ Pass

Any Text WCAG AA ✓ Pass

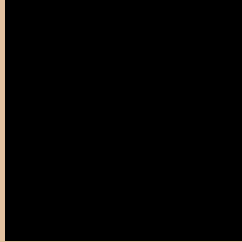
Large Text (above 18pt) WCAG AAA ✓ Pass

Any Text WCAG AAA ✓ Pass

If you want to check with other color combinations, try the [Color Contrast Checker](#).

YUV 199.1050, -19.2788, 23.5869

Background



This preview shows how black text looks on a background with the YUV color 199.1050, -19.2788, 23.5869.



This preview shows how white text looks on a background with the YUV color 199.1050, -19.2788, 23.5869.

Color Blindness Simulation

Color vision deficiency is a very complex topic, and I could not describe the different causes any better than Wikipedia does, so if you want to learn more, you should check out their [article about color blindness](#).

Dichromacy



Original Color

199.1050, -19.2788, 23.5869

Protanopia

197.5980, -17.0568, 10.8766

Deuteranopia

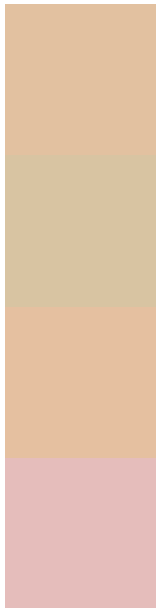
199.4260, -19.4370, 27.6904



Tritanopia

201.8660, 0.0661, 25.5505

Trichromacy



Original Color

199.1050, -19.2788, 23.5869

Protanomaly

198.1040, -17.7993, 15.6948

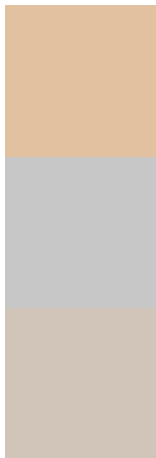
Deuteranomaly

199.4150, -19.4316, 25.9460

Tritanomaly

200.7320, -6.7699, 24.7910

Monochromacy



Original Color

199.1050, -19.2788, 23.5869

Achromatopsia

199.0000, 0.0000, 0.0000

Achromatomaly

199.2200, -7.0105, 8.5771

CSS Examples

Text

The CSS property to change the color of the text to YUV 199.1050, -19.2788, 23.5869 is called "color". The color property can be set on classes, ids or directly on the HTML element.

This example shows how text in the color `rgb(226, 193, 160)` looks like.

```
.text, #text, p{  
    color:rgb(226, 193, 160)  
}
```

If you want to add a text shadow in that color use the text-shadow property, you can generate a text shadow directly with our [CSS Text Shadow Generator](#).

Here you see how black text with a 4 pixel rgb(226, 193, 160) colored shadow looks like.

```
.shadow{ text-shadow: 4px 4px 2px rgb(226, 193, 160) }
```

Border

The CSS property to change the border of an element to YUV 199.1050, -19.2788, 23.5869 is called "border".

The border property can be set on classes, ids or directly on the HTML element.

This example shows the color as border, it can be applied via the CSS property "border" or "border-color".

```
.border, #border, table{ border:4px solid rgb(226, 193, 160) }
```


If only the border color should be changed use the property `border-color`.

```
.border{ border-color:rgb(226, 193, 160) }
```

If you want to add a box shadow in that color use:

Here you see how a box with a 4 pixel `rgb(226, 193, 160)` colored shadow looks like.

```
.boxshadow{ -moz-box-shadow:4px 4px 4px 4px rgb(226, 193, 160); -webkit-box-shadow:4px 4px 4px 4px rgb(226, 193, 160); box-shadow:4px 4px 4px 4px rgb(226, 193, 160) }
```

Background

The CSS property to change the background color of an element to YUV 199.1050, -19.2788, 23.5869 is called "background". The background property can be set on classes, ids or directly on the HTML element.

```
.background, #background, body{  
background: rgb(226, 193, 160) }
```

If only the background color should be changed can be used:

```
.background{ background-color: rgb(226,  
193, 160) }
```

This example shows the color as background, it is applied via the CSS property "background".

To optimize and compress your CSS code, you can use our [online CSS compressor and optimizer](#) based on csstidy. If you want to create a linear or radial gradient as background or border, check our [CSS Gradient Generator](#).

Hey! You found this booklet interesting? Support Converting Colors with the new Membership Option!

The pro membership hides all ads, plus gives you double the colors in the color bucket, and more awesome pro features!

[Learn more, Memberships starting at \\$2.50/m!](#)

**Follow me
on Twitter!**

@ConvertingColor