

Converting Colors

YUV(199.2730, -0.6276,
14.6696)

Have a look what the booklet for
YUV(199.2730, -0.6276, 14.6696)
contains.

YUV(199.2730, -0.6276, 14.6696)	3
<i>Conversions</i>	4
<i>Details</i>	6
<i>Harmonies</i>	12
<i>Previews</i>	24
<i>Color Blindness Simulation</i>	28
<i>CSS Examples</i>	31

Color

**YUV(199.2730, -0.6276,
14.6696)**

Conversions

Conversions Part 1

Format	Color
Hex	D8BFC6
RGB	216, 191, 198
RGB Percent	85%, 75%, 78%
CMY	0.1529, 0.2510, 0.2235
CMYK	0.00, 0.12, 0.08, 0.15
HSL	343°, 24%, 80%
HSV	343°, 12%, 85%
XYZ	57.1427, 55.9378, 61.2114
YIQ	199.2730, 12.6530, 7.4770

Conversions

Conversions Part 2

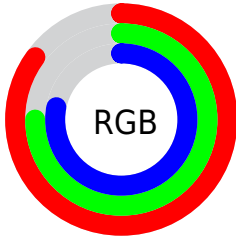
Format	Color
R _Y B	216, 191, 198
Decimal	14204870
CIE Lab	79.58, 10.02, -0.27
CIE LCh	80, 10.026, 358.432
Yxy	55.9378, 0.3279, 0.3209
Android (android.graphics.Color)	4292394950 (0xFFD8BFC6)
YUV	199.2730, -0.6276, 14.6696
Hunter-Lab	74.7915, 5.4936, 3.8296

Details

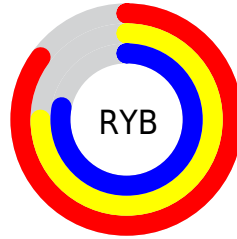
The YUV color $199.2730, -0.6276, 14.6696$ is a light color, and the websafe version is hex `CCCCCC`. A complement of this color would be $207.7270, 0.6276, -14.6696$, and the grayscale version is $199.0000, 0.0000, 0.0000$.

A 20% lighter version of the original color is $250.3040, 2.3151, 4.1184$, and $145.5610, -0.7696, 13.5400$ is the 20% darker color. If you saturate the color by 10%, you get $184.5350, -1.2498, 27.5948$, and if you desaturate by 10%, it is $214.0110, -0.0054, 1.7444$.

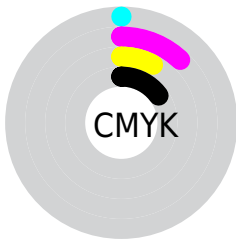
Distribution



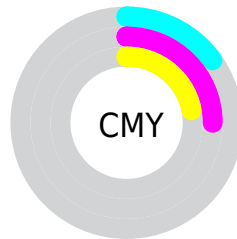
- Red (85%)
- Green (75%)
- Blue (78%)



- Red (85%)
- Yellow (75%)
- Blue (78%)



- Cyan (0%)
- Magenta (12%)
- Yellow (8%)
- Black (15%)




- Cyan (15%)
- Magenta (25%)
- Yellow (22%)

Brightness & Saturation Gradients

These gradients show how the YUV color 199.2730, -0.6276, 14.6696 changes by changing the brightness by 10 percent. The first figure shows a shift by +10% for each color and the second figure -10%.

Similar to the brightness gradients but the following saturation gradients show a change of the YUV color 199.2730, -0.6276, 14.6696 by changing the saturation by 10% instead.


 199.2730, -0.6276,
14.6696


 199.2730, -0.6276,
14.6696


255.0000, 0.0000,
0.0000


 171.9740, -0.4802,
14.0548


 250.3040, 2.3151,
4.1184

 145.5610, -0.7696,
13.5400

 119.6750, -0.3328,
13.4400

 94.9630, -0.4748,
12.3104

 70.9630, -0.4748,
12.3104

 48.3650, -0.1799,
11.0809

 27.6530, -0.3219,

9.9513

■ 5.6810, -2.8007,
11.6808

■ 0.0000, 0.0000,
0.0000

■ 199.2730, -0.6276,
14.6696

■ 199.2730, -0.6276,
14.6696

■ 184.5350, -1.2498,
27.5948

■ 214.0110, -0.0054,
1.7444

■ 170.4980, -1.7245,
39.9053

■ 228.0480, 0.4693,
-10.5661

■ 155.7600, -2.3467,
52.8305

■ 242.1990, 1.3809,
-22.9765

■ 141.7230, -2.8214,
65.1409

■ 243.3390, 5.7489,
-23.9763

■ 126.9850, -3.4436,
78.0662

■ 112.3610, -3.6290,
90.8914

■ 98.2100, -4.5405,
103.3018

■ 83.5860, -4.7259,
116.1271

■ 71.4240, -5.6320,
126.7932

Harmonies

Analogous

The Analogous color harmony consists of three colors that are next to each other on the color wheel.



198.7930, 4.0461, 8.9515



199.2730, -0.6276, 14.6696



198.8450, -4.8536, 16.7989

Triad

The Triadic color harmony groups three colors that are evenly spaced from another and form a triangle on the color wheel.



199.2730, -0.6276, 14.6696



195.7520, -7.2727, -0.6595



195.4910, 8.6319, -15.3396

Complementary

The Complementary color scheme is a pair of colors which are on the opposite of each other on the color wheel.



199.2730, -0.6276, 14.6696



207.7270, 0.6276, -14.6696

Split Complementary

Split-complementary colors differ from the complementary color scheme. The scheme consists of three colors, the original color and two neighbors of the complement color.



194.6710, 5.5852, -18.1285



199.2730, -0.6276, 14.6696



195.2070, -4.0461, -8.9515

Square

The Square scheme is like the rectangle color scheme, but the four colors are evenly spaced on the color wheel.



199.2730, -0.6276, 14.6696



197.0520, -8.8996, 7.8474



194.4280, 0.7750, -15.2844



196.7630, 9.4838, -8.5622

Rectangle

The Rectangle color scheme consists of four colors that form a rectangle on the color wheel.



199.2730, -0.6276, 14.6696



198.8510, -7.3215, 15.0397



194.4280, 0.7750, -15.2844



195.2520, 7.7638, -16.8840

Sweetspot

The Sweet Spot groups the original color and five complimentary colors.



199.2730, -0.6276, 14.6696



249.6200, -0.3057, 4.7183



199.2320, 8.2666, 8.5665



124.0220, -0.0108, 3.4887



0.0000, 0.0000, 0.0000



128.0000, 0.0000, 0.0000

Same Dimension

The Same Dimension uses a secret algorithm to generate beautiful new colors.



199.2730, -0.6276, 14.6696



230.9040, -0.9387, 21.1322



201.4100, -5.1321, 12.7954



99.6310, -0.3111, 6.4626



56.6010, -4.2403, 100.3279



14.2250, -1.0969, 25.2357

Inverse Universe

The Inverse Universe completely reimagines the original color for something new.



199.2730, -0.6276, 14.6696



230.9040, -0.9387, 21.1322



205.5900, 5.1321, -12.7954



99.6310, -0.3111, 6.4626



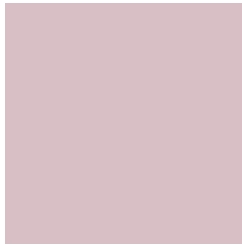
56.6010, -4.2403, 100.3279



14.2250, -1.0969, 25.2357

Previews

White Background



This preview shows how the YUV color 199.2730, -0.6276, 14.6696 looks on a white background.

Color Contrast Check

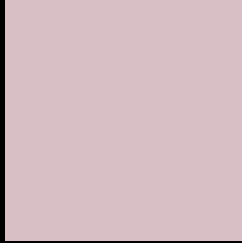
Large Text (above 18pt) WCAG AA × Fail

Any Text WCAG AA × Fail

Large Text (above 18pt) WCAG AAA × Fail

Any Text WCAG AAA × Fail

Black Background



This preview shows how the YUV color 199.2730, -0.6276, 14.6696 looks on a black background.

Color Contrast Check

Large Text (above 18pt) WCAG AA ✓ Pass

Any Text WCAG AA ✓ Pass

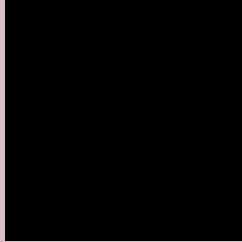
Large Text (above 18pt) WCAG AAA ✓ Pass

Any Text WCAG AAA ✓ Pass

If you want to check with other color combinations, try the [Color Contrast Checker](#).

YUV 199.2730, -0.6276, 14.6696

Background



This preview shows how black text looks on a background with the YUV color 199.2730, -0.6276, 14.6696.



This preview shows how white text looks on a background with the YUV color 199.2730, -0.6276,

14.6696.

Color Blindness Simulation

Color vision deficiency is a very complex topic, and I could not describe the different causes any better than Wikipedia does, so if you want to learn more, you should check out their [article about color blindness](#).

Dichromacy



Original Color

199.2730, -0.6276, 14.6696

Protanopia

197.7660, 1.5944, 1.9592

Deuteranopia

199.2730, -0.6276, 14.6696



Tritanopia

199.7830, 2.5720, 15.0993

Trichromacy



Original Color

199.2730, -0.6276, 14.6696

Protanomaly

198.2720, 0.8519, 6.7775

Deuteranomaly

199.2730, -0.6276, 14.6696

Tritanomaly

199.4410, 1.2616, 15.3992

Monochromacy



Original Color

199.2730, -0.6276, 14.6696

Achromatopsia

199.0000, 0.0000, 0.0000

Achromatomaly

199.0330, -0.0163, 5.2331

CSS Examples

Text

The CSS property to change the color of the text to YUV 199.2730, -0.6276, 14.6696 is called "color". The color property can be set on classes, ids or directly on the HTML element.

This example shows how text in the color `rgb(216, 191, 198)` looks like.

```
.text, #text, p{  
    color:rgb(216, 191, 198)  
}
```

If you want to add a text shadow in that color use the text-shadow property, you can generate a text shadow directly with our [CSS Text Shadow Generator](#).

Here you see how black text with a 4 pixel rgb(216, 191, 198) colored shadow looks like.

```
.shadow{ text-shadow: 4px 4px 2px rgb(216, 191, 198) }
```

Border

The CSS property to change the border of an element to YUV 199.2730, -0.6276, 14.6696 is called "border". The border property can be set on classes, ids or directly on the HTML element.

This example shows the color as border, it can be applied via the CSS property "border" or "border-color".

```
.border, #border, table{ border:4px solid rgb(216, 191, 198) }
```


If only the border color should be changed use the property border-color.

```
.border{ border-color:rgb(216, 191, 198) }
```

If you want to add a box shadow in that color use:

Here you see how a box with a 4 pixel rgb(216, 191, 198) colored shadow looks like.

```
.boxshadow{ -moz-box-shadow:4px 4px 4px  
4px rgb(216, 191, 198); -webkit-box-  
shadow:4px 4px 4px 4px rgb(216, 191, 198);  
box-shadow:4px 4px 4px 4px rgb(216, 191,  
198) }
```

Background

The CSS property to change the background color of an element to YUV 199.2730, -0.6276, 14.6696 is called "background". The background property can be set on classes, ids or directly on the HTML element.

```
.background, #background, body{  
background: rgb(216, 191, 198) }
```

If only the background color should be changed can be used:

```
.background{ background-color: rgb(216,  
191, 198) }
```

This example shows the color as background, it is applied via the CSS property "background".

To optimize and compress your CSS code, you can use our [online CSS compressor and optimizer](#) based on csstidy. If you want to create a linear or radial gradient as background or border, check our [CSS Gradient Generator](#).

Hey! You found this booklet interesting? Support Converting Colors with the new Membership Option!

The pro membership hides all ads, plus gives you double the colors in the color bucket, and more awesome pro features!

[Learn more, Memberships starting at \\$2.50/m!](#)

**Follow me
on Twitter!**

@ConvertingColor