

Converting Colors

YUV(199.3260, -14.4577,
17.2541)

Have a look what the booklet for
YUV(199.3260, -14.4577, 17.2541)
contains.

YUV(199.3260, -14.4577, 17.2541)	3
<i>Conversions</i>	4
<i>Details</i>	6
<i>Harmonies</i>	12
<i>Previews</i>	24
<i>Color Blindness Simulation</i>	28
<i>CSS Examples</i>	31

Color

**YUV(199.3260, -14.4577,
17.2541)**

Conversions

Conversions Part 1

Format	Color
Hex	DBC3AA
RGB	219, 195, 170
RGB Percent	86%, 76%, 67%
CMY	0.1412, 0.2353, 0.3333
CMYK	0.00, 0.11, 0.22, 0.14
HSL	31°, 40%, 76%
HSV	31°, 22%, 86%
XYZ	55.9842, 56.9926, 46.0802
YIQ	199.3260, 22.3290, -2.6870

Conversions

Conversions Part 2

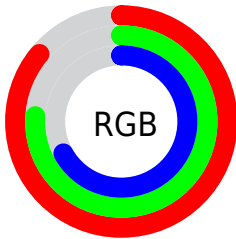
Format	Color
R _Y B	217, 219, 170
Decimal	14402474
CIE Lab	80.18, 4.58, 15.66
CIE LCh	80, 16.317, 73.706
Yxy	56.9926, 0.3520, 0.3583
Android (android.graphics.Color)	4292592554 (0xFFDBC3AA)
YUV	199.3260, -14.4577, 17.2541
Hunter-Lab	75.4934, 0.2581, 16.6556

Details

The YUV color $199.3260, -14.4577, 17.2541$ is a light color, and the websafe version is hex `CCCC99`. A complement of this color would be $189.6740, 14.4577, -17.2541$, and the grayscale version is $199.0000, 0.0000, 0.0000$.

A 20% lighter version of the original color is $249.8190, -12.2358, 4.5437$, and $145.2550, -13.4367, 16.4394$ is the 20% darker color. If you saturate the color by 10%, you get $190.3610, -20.8840, 25.1164$, and if you desaturate by 10%, it is $208.2910, -8.0315, 9.3918$.

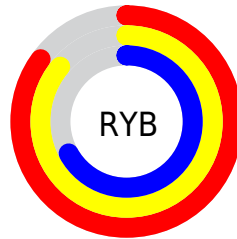
Distribution



Red (86%)

Green (76%)

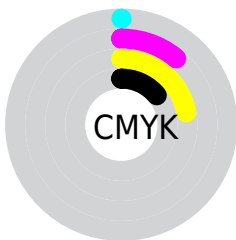
Blue (67%)



Red (85%)

Yellow (86%)

Blue (67%)

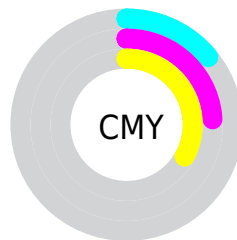


Cyan (0%)

Magenta (11%)

Yellow (22%)

Black (14%)



Cyan (14%)

Magenta (24%)

Yellow (33%)

Brightness & Saturation Gradients

These gradients show how the YUV color 199.3260, -14.4577, 17.2541 changes by changing the brightness by 10 percent. The first figure shows a shift by +10% for each color and the second figure -10%.

Similar to the brightness gradients but the following saturation gradients show a change of the YUV color 199.3260, -14.4577, 17.2541 by changing the saturation by 10% instead.

■ 199.3260,
-14.4577, 17.2541

■ 199.3260,
-14.4577, 17.2541

255.0000, 0.0000,
0.0000

■ 172.0270,
-14.3103, 16.6393

■ 249.8190,
-12.2358, 4.5437

■ 145.2550,
-13.4367, 16.4394

254.8860, -0.4368,
0.1000

■ 119.6570,
-13.1419, 15.2098

■ 94.4720, -12.5577,
14.4951

■ 70.9880, -11.8261,
13.1655

■ 48.5040, -11.0945,
11.8360

■ 26.6350, -13.1311,

11.7211

■ 3.8870, -1.9163,
7.9921

■ 0.0000, 0.0000,
0.0000

■ 199.3260,
-14.4577, 17.2541

■ 199.3260,
-14.4577, 17.2541

■ 190.3610,
-20.8840, 25.1164

■ 208.2910, -8.0315,
9.3918

■ 181.9830,
-27.5996, 32.4639

■ 216.6690, -1.3158,
2.0443

■ 173.0180,
-34.0259, 40.3262

■ 225.6340, 5.1104,
-5.8180

■ 164.0530,
-40.4521, 48.1885

■ 234.2570, 10.2263,
-13.3804

■ 155.2020,
-46.4416, 55.9508

■ 240.7140, 7.0430,
-19.0432

■ 146.8240,
-53.1572, 63.2984

■ 244.2360, 5.3067,
-22.1320

■ 137.8590,
-59.5835, 71.1607

■ 131.2250,
-64.6939, 76.9787

Harmonies

Analogous

The Analogous color harmony consists of three colors that are next to each other on the color wheel.



200.8800, -11.2798, 24.6612



199.3260, -14.4577, 17.2541



197.6620, -14.1304, 5.5584

Triad

The Triadic color harmony groups three colors that are evenly spaced from another and form a triangle on the color wheel.



199.3260, -14.4577, 17.2541



193.6050, 5.6177, -28.5946



201.2750, 9.7244, 7.6518

Complementary

The Complementary color scheme is a pair of colors which are on the opposite of each other on the color wheel.



199.3260, -14.4577, 17.2541



189.6740, 14.4577, -17.2541

Split Complementary

Split-complementary colors differ from the complementary color scheme. The scheme consists of three colors, the original color and two neighbors of the complement color.



199.3270, 14.1358, -7.3028



199.3260, -14.4577, 17.2541



194.0270, 12.3117, -28.9647

Square

The Square scheme is like the rectangle color scheme, but the four colors are evenly spaced on the color wheel.



199.3260, -14.4577, 17.2541



193.9990, -1.9715, -21.0471



196.8800, 15.3422, -20.9428



201.9300, 2.9925, 20.2324

Rectangle

The Rectangle color scheme consists of four colors that form a rectangle on the color wheel.



199.3260, -14.4577, 17.2541



196.2910, -11.4825, -3.7632



196.8800, 15.3422, -20.9428



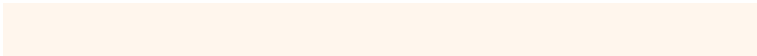
200.4100, 11.6299, 3.1484

Sweetspot

The Sweet Spot groups the original color and five complimentary colors.



199.3260, -14.4577, 17.2541



247.6650, -5.2578, 6.4328



187.5010, 3.6970, 27.6246



123.8110, -3.3578, 3.6738



0.0000, 0.0000, 0.0000



128.0000, 0.0000, 0.0000

Same Dimension

The Same Dimension uses a secret algorithm to generate beautiful new colors.



199.3260, -14.4577, 17.2541



227.1760, -20.2998, 24.4016



213.4140, -21.4031, 4.8989



105.2240, -3.0684, 4.1886



103.3830, -50.9678, 61.0541



27.2550, -13.4367, 16.4394

Inverse Universe

The Inverse Universe completely reimagines the original color for something new.



189.6740, 14.4577, -17.2541



213.8240, 20.2998, -24.4016



175.5860, 21.4031, -4.8989



103.1890, 3.3578, -3.6738



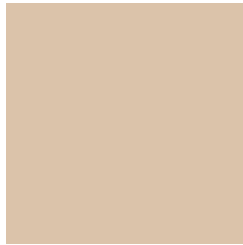
69.6170, 50.9678, -61.0541



18.1580, 13.7261, -15.9246

Previews

White Background



This preview shows how the YUV color 199.3260, -14.4577, 17.2541 looks on a white background.

Color Contrast Check

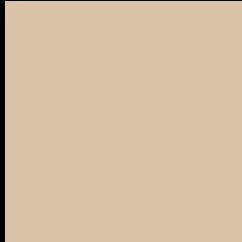
Large Text (above 18pt) WCAG AA × Fail

Any Text WCAG AA × Fail

Large Text (above 18pt) WCAG AAA × Fail

Any Text WCAG AAA × Fail

Black Background



This preview shows how the YUV color 199.3260, -14.4577, 17.2541 looks on a black background.

Color Contrast Check

Large Text (above 18pt) WCAG AA ✓ Pass

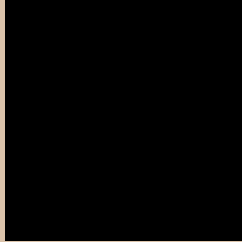
Any Text WCAG AA ✓ Pass

Large Text (above 18pt) WCAG AAA ✓ Pass

Any Text WCAG AAA ✓ Pass

If you want to check with other color combinations, try the [Color Contrast Checker](#).

YUV 199.3260, -14.4577, 17.2541 Background



This preview shows how black text looks on a background with the YUV color 199.3260, -14.4577, 17.2541.



This preview shows how white text looks on a background with the YUV color 199.3260, -14.4577, 17.2541.

Color Blindness Simulation

Color vision deficiency is a very complex topic, and I could not describe the different causes any better than Wikipedia does, so if you want to learn more, you should check out their [article about color blindness](#).

Dichromacy



Original Color

199.3260, -14.4577, 17.2541

Protanopia

198.3250, -12.9782, 9.3620

Deuteranopia

199.7830, -14.1900, 24.7463



Tritanopia

201.5770, 1.6875, 18.7880

Trichromacy



Original Color

199.3260, -14.4577, 17.2541

Protanomaly

198.8200, -13.7153, 12.4359

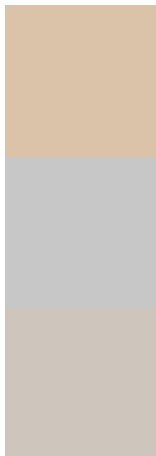
Deuteranomaly

199.4730, -14.0372, 22.3872

Tritanomaly

200.9700, -4.4222, 18.4433

Monochromacy



Original Color

199.3260, -14.4577, 17.2541

Achromatopsia

199.0000, 0.0000, 0.0000

Achromatomaly

199.2520, -5.5472, 5.9180

CSS Examples

Text

The CSS property to change the color of the text to YUV 199.3260, -14.4577, 17.2541 is called "color". The color property can be set on classes, ids or directly on the HTML element.

This example shows how text in the color `rgb(219, 195, 170)` looks like.

```
.text, #text, p{  
    color:rgb(219, 195, 170)  
}
```

If you want to add a text shadow in that color use the text-shadow property, you can generate a text shadow directly with our [CSS Text Shadow Generator](#).

Here you see how black text with a 4 pixel rgb(219, 195, 170) colored shadow looks like.

```
.shadow{ text-shadow: 4px 4px 2px rgb(219, 195, 170) }
```

Border

The CSS property to change the border of an element to YUV 199.3260, -14.4577, 17.2541 is called "border".

The border property can be set on classes, ids or directly on the HTML element.

This example shows the color as border, it can be applied via the CSS property "border" or "border-color".

```
.border, #border, table{ border:4px solid rgb(219, 195, 170) }
```


If only the border color should be changed use the property `border-color`.

```
.border{ border-color:rgb(219, 195, 170) }
```

If you want to add a box shadow in that color use:

Here you see how a box with a 4 pixel `rgb(219, 195, 170)` colored shadow looks like.

```
.boxshadow{ -moz-box-shadow:4px 4px 4px  
4px rgb(219, 195, 170); -webkit-box-  
shadow:4px 4px 4px 4px rgb(219, 195, 170);  
box-shadow:4px 4px 4px 4px rgb(219, 195,  
170) }
```

Background

The CSS property to change the background color of an element to YUV 199.3260, -14.4577, 17.2541 is called "background". The background property can be set on classes, ids or directly on the HTML element.

```
.background, #background, body{  
background: rgb(219, 195, 170) }
```

If only the background color should be changed can be used:

```
.background{ background-color: rgb(219,  
195, 170) }
```

This example shows the color as background, it is applied via the CSS property "background".

To optimize and compress your CSS code, you can use our [online CSS compressor and optimizer](#) based on csstidy. If you want to create a linear or radial gradient as background or border, check our [CSS Gradient Generator](#).

Hey! You found this booklet interesting? Support Converting Colors with the new Membership Option!

The pro membership hides all ads, plus gives you double the colors in the color bucket, and more awesome pro features!

[Learn more, Memberships starting at \\$2.50/m!](#)

**Follow me
on Twitter!**

@ConvertingColor