

Converting Colors

YUV(199.9260, -4.4005,
11.4659)

Have a look what the booklet for
YUV(199.9260, -4.4005, 11.4659)
contains.

YUV(199.9260, -4.4005, 11.4659)	3
<i>Conversions</i>	4
<i>Details</i>	6
<i>Harmonies</i>	12
<i>Previews</i>	24
<i>Color Blindness Simulation</i>	28
<i>CSS Examples</i>	31

Color

**YUV(199.9260, -4.4005,
11.4659)**

Conversions

Conversions Part 1

Format	Color
Hex	D5C3BF
RGB	213, 195, 191
RGB Percent	84%, 76%, 75%
CMY	0.1647, 0.2353, 0.2510
CMYK	0.00, 0.08, 0.10, 0.16
HSL	11°, 21%, 79%
HSV	11°, 10%, 84%
XYZ	56.3596, 56.9379, 57.3099
YIQ	199.9260, 12.0120, 2.5720

Conversions

Conversions Part 2

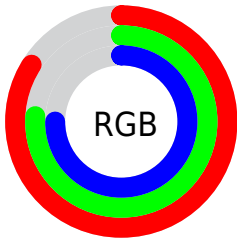
Format	Color
R _Y B	213, 196, 191
Decimal	14009279
CIE Lab	80.14, 5.65, 4.29
CIE LCh	80, 7.088, 37.209
Yxy	56.9379, 0.3303, 0.3337
Android (android.graphics.Color)	4292199359 (0xFFD5C3BF)
YUV	199.9260, -4.4005, 11.4659
Hunter-Lab	75.4572, 1.2730, 7.7892

Details

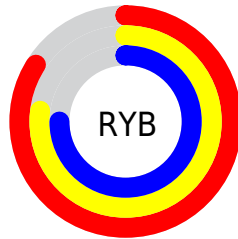
The YUV color $199.9260, -4.4005, 11.4659$ is a light color, and the websafe version is hex `CCCCCC`. A complement of this color would be $204.0740, 4.4005, -11.4659$, and the grayscale version is $200.0000, 0.0000, 0.0000$.

A 20% lighter version of the original color is $252.3270, -2.6262, 2.3442$, and $145.7410, -3.8163, 10.7511$ is the 20% darker color. If you saturate the color by 10%, you get $187.5530, -8.6536, 22.3170$, and if you desaturate by 10%, it is $212.2990, -0.1474, 0.6148$.

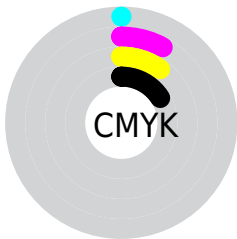
Distribution



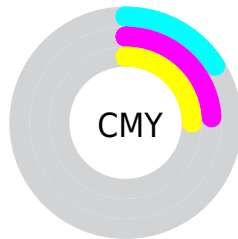
- Red (84%)
- Green (76%)
- Blue (75%)



- Red (84%)
- Yellow (77%)
- Blue (75%)



- Cyan (0%)
- Magenta (8%)
- Yellow (10%)
- Black (16%)



- Cyan (16%)
- Magenta (24%)
- Yellow (25%)

Brightness & Saturation Gradients

These gradients show how the YUV color 199.9260, -4.4005, 11.4659 changes by changing the brightness by 10 percent. The first figure shows a shift by +10% for each color and the second figure -10%.

Similar to the brightness gradients but the following saturation gradients show a change of the YUV color 199.9260, -4.4005, 11.4659 by changing the saturation by 10% instead.

■ 199.9260, -4.4005,
11.4659

■ 199.9260, -4.4005,
11.4659

255.0000, 0.0000,
0.0000

■ 172.6270, -4.2531,
10.8511

■ 252.3270, -2.6262,
2.3442

■ 145.7410, -3.8163,
10.7511

■ 120.3280, -4.1057,
10.2363

■ 95.4420, -3.6689,
10.1364

■ 71.8440, -3.3741,
8.9068

■ 49.5450, -3.2267,
8.2920

■ 28.2460, -3.0793,

7.6773

■ 4.4850, -2.2111,
9.2217

■ 0.0000, 0.0000,
0.0000

■ 199.9260, -4.4005,
11.4659

■ 199.9260, -4.4005,
11.4659

■ 187.5530, -8.6536,
22.3170

■ 212.2990, -0.1474,
0.6148

■ 174.4790,
-13.0541, 33.7829

■ 225.3730, 4.2531,
-10.8511

■ 162.1060,
-17.3073, 44.6340

■ 237.7460, 8.5062,
-21.7022

■ 149.1460,
-21.2710, 56.0000

■ 242.4420, 6.1911,
-25.8206

■ 136.7730,
-25.5241, 66.8511

■ 123.6990,
-29.9246, 78.3170

■ 111.3260,
-34.1777, 89.1681

■ 98.9530, -38.4308,
100.0192

■ 86.5800, -42.6839,
110.8703

Harmonies

Analogous

The Analogous color harmony consists of three colors that are next to each other on the color wheel.



200.0230, -1.4903, 11.3808



199.9260, -4.4005, 11.4659



199.4480, -6.1369, 8.3771

Triad

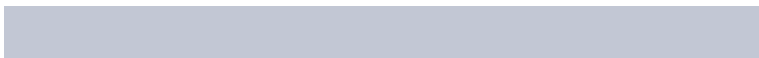
The Triadic color harmony groups three colors that are evenly spaced from another and form a triangle on the color wheel.



199.9260, -4.4005, 11.4659



196.7880, -1.8675, -7.7071



198.9870, 6.4154, -4.3736

Complementary

The Complementary color scheme is a pair of colors which are on the opposite of each other on the color wheel.



199.9260, -4.4005, 11.4659



204.0740, 4.4005, -11.4659

Split Complementary

Split-complementary colors differ from the complementary color scheme. The scheme consists of three colors, the original color and two neighbors of the complement color.



197.9540, 6.4317, -9.6067



199.9260, -4.4005, 11.4659



196.9770, 1.4903, -11.3808

Square

The Square scheme is like the rectangle color scheme, but the four colors are evenly spaced on the color wheel.



199.9260, -4.4005, 11.4659



197.7240, -4.7939, -2.3889



196.7750, 4.5479, -12.0807



199.8630, 4.5045, 1.8741

Rectangle

The Rectangle color scheme consists of four colors that form a rectangle on the color wheel.



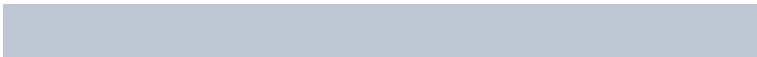
199.9260, -4.4005, 11.4659



198.7250, -6.2734, 5.5032



196.7750, 4.5479, -12.0807



198.0900, 6.8576, -6.2179

Sweetspot

The Sweet Spot groups the original color and five complimentary colors.



199.9260, -4.4005, 11.4659



250.5660, -1.7580, 3.8886



199.6300, 4.6194, 11.7255



124.3810, -1.1738, 3.1739



0.0000, 0.0000, 0.0000



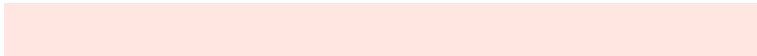
128.0000, 0.0000, 0.0000

Same Dimension

The Same Dimension uses a secret algorithm to generate beautiful new colors.



199.9260, -4.4005, 11.4659



236.7910, -6.3060, 15.9693



206.3830, -7.5838, 5.8031



100.4630, -2.2003, 5.7329



69.3260, -34.1777, 89.1681



17.5530, -8.6536, 22.3170

Inverse Universe

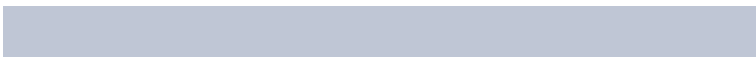
The Inverse Universe completely reimagines the original color for something new.



204.0740, 4.4005, -11.4659



242.2090, 6.3060, -15.9693



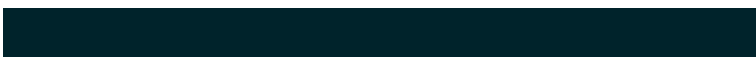
197.6170, 7.5838, -5.8031



102.5370, 2.2003, -5.7329



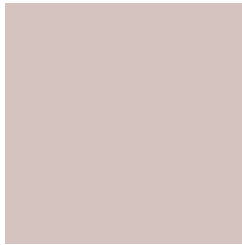
101.6740, 34.1777, -89.1681



25.4470, 8.6536, -22.3170

Previews

White Background



This preview shows how the YUV color 199.9260, -4.4005, 11.4659 looks on a white background.

Color Contrast Check

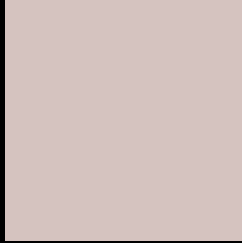
Large Text (above 18pt) WCAG AA × Fail

Any Text WCAG AA × Fail

Large Text (above 18pt) WCAG AAA × Fail

Any Text WCAG AAA × Fail

Black Background



This preview shows how the YUV color 199.9260, -4.4005, 11.4659 looks on a black background.

Color Contrast Check

Large Text (above 18pt) WCAG AA ✓ Pass

Any Text WCAG AA ✓ Pass

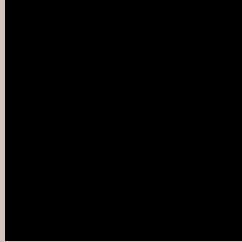
Large Text (above 18pt) WCAG AAA ✓ Pass

Any Text WCAG AAA ✓ Pass

If you want to check with other color combinations, try the [Color Contrast Checker](#).

YUV 199.9260, -4.4005, 11.4659

Background



This preview shows how black text looks on a background with the YUV color 199.9260, -4.4005, 11.4659.



This preview shows how white text looks on a background with the YUV color 199.9260, -4.4005,

Color Blindness Simulation

Color vision deficiency is a very complex topic, and I could not describe the different causes any better than Wikipedia does, so if you want to learn more, you should check out their [article about color blindness](#).

Dichromacy



Original Color

199.9260, -4.4005, 11.4659

Protanopia

199.2240, -3.0684, 4.1886

Deuteranopia

200.6710, -4.2748, 17.8285



Tritanopia

200.7010, 3.5984, 12.5402

Trichromacy



Original Color

199.9260, -4.4005, 11.4659

Protanomaly

199.4200, -3.6581, 6.6477

Deuteranomaly

200.3610, -4.1220, 15.4694

Tritanomaly

200.3050, 0.8356, 12.0105

Monochromacy



Original Color

199.9260, -4.4005, 11.4659

Achromatopsia

200.0000, 0.0000, 0.0000

Achromatomaly

199.9790, -1.4686, 4.4034

CSS Examples

Text

The CSS property to change the color of the text to YUV 199.9260, -4.4005, 11.4659 is called "color". The color property can be set on classes, ids or directly on the HTML element.

This example shows how text in the color `rgb(213, 195, 191)` looks like.

```
.text, #text, p{  
    color:rgb(213, 195, 191)  
}
```

If you want to add a text shadow in that color use the text-shadow property, you can generate a text shadow directly with our [CSS Text Shadow Generator](#).

Here you see how black text with a 4 pixel rgb(213, 195, 191) colored shadow looks like.

```
.shadow{ text-shadow: 4px 4px 2px rgb(213, 195, 191) }
```

Border

The CSS property to change the border of an element to YUV 199.9260, -4.4005, 11.4659 is called "border". The border property can be set on classes, ids or directly on the HTML element.

This example shows the color as border, it can be applied via the CSS property "border" or "border-color".

```
.border, #border, table{ border:4px solid rgb(213, 195, 191) }
```


If only the border color should be changed use the property `border-color`.

```
.border{ border-color:rgb(213, 195, 191) }
```

If you want to add a box shadow in that color use:

Here you see how a box with a 4 pixel `rgb(213, 195, 191)` colored shadow looks like.

```
.boxshadow{ -moz-box-shadow:4px 4px 4px  
4px rgb(213, 195, 191); -webkit-box-  
shadow:4px 4px 4px 4px rgb(213, 195, 191);  
box-shadow:4px 4px 4px 4px rgb(213, 195,  
191) }
```

Background

The CSS property to change the background color of an element to YUV 199.9260, -4.4005, 11.4659 is called "background". The background property can be set on classes, ids or directly on the HTML element.

```
.background, #background, body{  
background: rgb(213, 195, 191) }
```

If only the background color should be changed can be used:

```
.background{ background-color: rgb(213,  
195, 191) }
```

This example shows the color as background, it is applied via the CSS property "background".

To optimize and compress your CSS code, you can use our [online CSS compressor and optimizer](#) based on csstidy. If you want to create a linear or radial gradient as background or border, check our [CSS Gradient Generator](#).

Hey! You found this booklet interesting? Support Converting Colors with the new Membership Option!

The pro membership hides all ads, plus gives you double the colors in the color bucket, and more awesome pro features!

[Learn more, Memberships starting at \\$2.50/m!](#)

**Follow me
on Twitter!**

@ConvertingColor