

# Converting Colors

YUV(20.2640, -7.0322, 15.5545)

Have a look what the booklet for  
YUV(20.2640, -7.0322, 15.5545)  
contains.

<b>YUV(20.2640, -7.0322, 15.5545)</b> .....	3
<b><i>Conversions</i></b> .....	4
<b><i>Details</i></b> .....	6
<b><i>Harmonies</i></b> .....	12
<b><i>Previews</i></b> .....	24
<b><i>Color Blindness Simulation</i></b> .....	28
<b><i>CSS Examples</i></b> .....	31

# Color

**YUV(20.2640, -7.0322,  
15.5545)**

# Conversions

## Conversions Part 1

Format	Color
Hex	260E06
RGB	38, 14, 6
RGB Percent	15%, 5%, 2%
CMY	0.8510, 0.9451, 0.9765
CMYK	0.00, 0.63, 0.84, 0.85
HSL	15°, 73%, 9%
HSV	15°, 84%, 15%
XYZ	0.9892, 0.7393, 0.2629
YIQ	20.2640, 16.8720, 2.6000

# Conversions

## Conversions Part 2

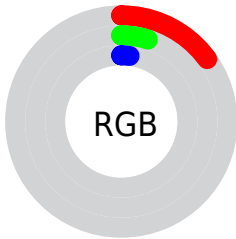
<b>Format</b>	<b>Color</b>
<b>R<sub>Y</sub>B</b>	38, 17, 6
Decimal	2493958
CIE Lab	6.68, 11.42, 7.75
CIE LCh	7, 13.801, 34.183
Yxy	0.7393, 0.4968, 0.3712
Android (android.graphics.Color)	4280684038 (0xFF260E06)
YUV	20.2640, -7.0322, 15.5545
Hunter-Lab	8.5982, 5.4898, 4.2062

# Details

The YUV color **20.2640, -7.0322, 15.5545** is a dark color, and the websafe version is hex **330000**. A complement of this color would be **23.7360, 7.0322, -15.5545**, and the grayscale version is **20.0000, 0.0000, 0.0000**.

A 20% lighter version of the original color is **63.9160, -5.8746, 17.6137**, and **0.0000, 0.0000, 0.0000** is the 20% darker color. If you saturate the color by 10%, you get **18.0470, -7.9112, 17.4988**, and if you desaturate by 10%, it is **22.4810, -6.1531, 13.6102**.

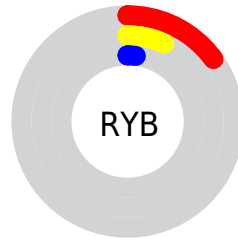
# Distribution



Red (15%)

Green (5%)

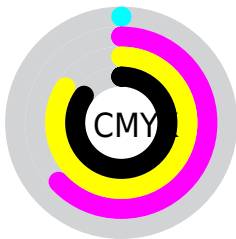
Blue (2%)



Red (15%)

Yellow (7%)

Blue (2%)

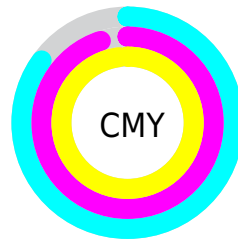


Cyan (0%)

Magenta (63%)

Yellow (84%)

Black (85%)



Cyan (85%)

Magenta (95%)

Yellow (98%)

# Brightness & Saturation Gradients

These gradients show how the YUV color 20.2640, -7.0322, 15.5545 changes by changing the brightness by 10 percent. The first figure shows a shift by +10% for each color and the second figure -10%.

Similar to the brightness gradients but the following saturation gradients show a change of the YUV color 20.2640, -7.0322, 15.5545 by changing the saturation by 10% instead.



■ 20.2640, -7.0322,  
15.5545

■ 20.2640, -7.0322,  
15.5545

■ 241.6980, -5.2741,  
11.6659

■ 0.0000, 0.0000,  
0.0000

■ 63.9160, -5.8746,  
17.6137

■ 87.1010, -6.4588,  
18.3284

■ 112.2860, -7.0430,  
19.0432

■ 137.8840, -7.3378,  
20.2727

■ 164.1830, -7.4852,  
20.8875

■ 191.3680, -8.0694,

21.6023

■ 219.0800, -7.9274,  
22.7318

■ 20.2640, -7.0322,  
15.5545

■ 20.2640, -7.0322,  
15.5545

■ 18.0470, -7.9112,  
17.4988

■ 22.4810, -6.1531,  
13.6102

■ 17.2320, -8.4954,  
18.2135

■ 24.6980, -5.2741,  
11.6659

■ 26.8010, -4.8319,  
9.8215

■ 28.4310, -3.6635,  
8.3920

■ 30.6480, -2.7845,  
6.4477

■ 32.8650, -1.9054,  
4.5034

■ 35.0820, -1.0264,  
2.5591

■ 37.1850, -0.5842,  
0.7148

■ 39.4020, 0.2948,  
-1.2296

# Harmonies

## Analogous

The Analogous color harmony consists of three colors that are next to each other on the color wheel.



21.2730, -0.6276, 14.6696



20.2640, -7.0322, 15.5545



20.1450, -9.9315, 12.1508

# Triad

The Triadic color harmony groups three colors that are evenly spaced from another and form a triangle on the color wheel.



20.2640, -7.0322, 15.5545



16.2880, -3.5930, -14.2846



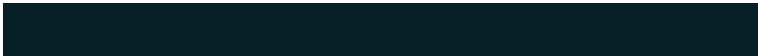
18.8660, 9.9261, -10.4065

# Complementary

The Complementary color scheme is a pair of colors which are on the opposite of each other on the color wheel.



20.2640, -7.0322, 15.5545



23.7360, 7.0322, -15.5545

# Split Complementary

Split-complementary colors differ from the complementary color scheme. The scheme consists of three colors, the original color and two neighbors of the complement color.



18.3060, 9.2161, -16.0544



20.2640, -7.0322, 15.5545



18.3570, 1.7960, -16.0991

# Square

The Square scheme is like the rectangle color scheme, but the four colors are evenly spaced on the color wheel.



20.2640, -7.0322, 15.5545



18.8720, -9.3039, -2.5187



18.7960, 6.0166, -16.4841



21.5470, 7.1253, 1.2743



# Rectangle

The Rectangle color scheme consists of four colors that form a rectangle on the color wheel.



20.2640, -7.0322, 15.5545



19.8240, -9.7732, 8.0474



18.7960, 6.0166, -16.4841



17.6590, 10.5211, -14.6099

# Sweetspot

The Sweet Spot groups the original color and five complimentary colors.



20.2640, -7.0322, 15.5545



41.3490, -2.6371, 5.8329



18.3040, 5.7661, 17.2734



21.5660, -1.7580, 3.8886



153.0000, 0.0000, 0.0000



26.0000, 0.0000, 0.0000



# Same Dimension

The Same Dimension uses a secret algorithm to generate beautiful new colors.



20.2640, -7.0322, 15.5545



21.3960, -10.5482, 23.3317



29.6560, -11.6624, 7.3177



17.1850, -0.5842, 0.7148



36.2580, -17.8752, 40.1157

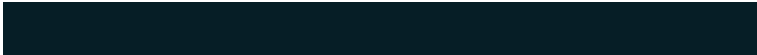


93.0150, -45.8564, 101.7188



# Inverse Universe

The Inverse Universe completely reimagines the original color for something new.



23.7360, 7.0322, -15.5545



26.6040, 10.5482, -23.3317



14.3440, 11.6624, -7.3177



16.8150, 0.5842, -0.7148



45.1550, 18.1646, -39.6009

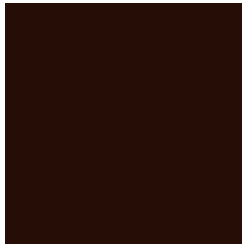


115.9850, 45.8564, -101.7188



# Previews

## White Background



This preview shows how the YUV color 20.2640, -7.0322, 15.5545 looks on a white background.

## Color Contrast Check

Large Text (above 18pt) WCAG AA ✓ Pass

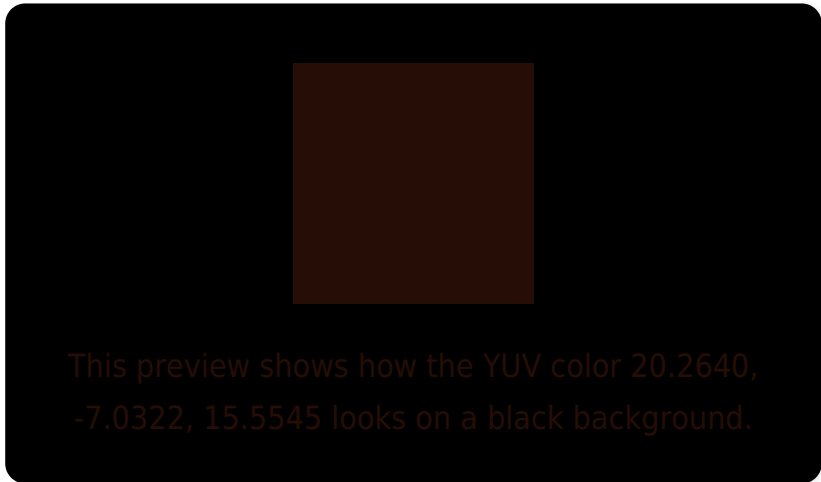
Any Text WCAG AA ✓ Pass

Large Text (above 18pt) WCAG AAA ✓ Pass

Any Text WCAG AAA ✓ Pass



# Black Background



## Color Contrast Check

Large Text (above 18pt) WCAG AA × Fail

Any Text WCAG AA × Fail

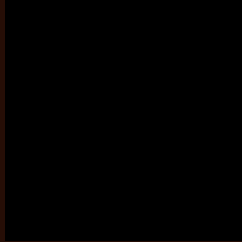
Large Text (above 18pt) WCAG AAA × Fail

Any Text WCAG AAA × Fail

If you want to check with other color combinations, try the [Color Contrast Checker](#).

# YUV 20.2640, -7.0322, 15.5545

## Background



This preview shows how black text looks on a background with the YUV color 20.2640, -7.0322, 15.5545.



This preview shows how white text looks on a background with the YUV color 20.2640, -7.0322,



# Color Blindness Simulation

Color vision deficiency is a very complex topic, and I could not describe the different causes any better than Wikipedia does, so if you want to learn more, you should check out their [article about color blindness](#).

## Dichromacy



### Original Color

20.2640, -7.0322, 15.5545

### Protanopia

21.3010, -6.5574, 3.2440

### Deuteranopia

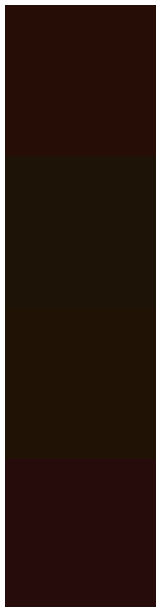
21.0410, -8.8942, 6.1030



## Tritanopia

20.5890, -3.2484, 15.2694

# Trichromacy



## Original Color

20.2640, -7.0322, 15.5545

## Protanomaly

20.9210, -6.8631, 7.9623

## Deuteranomaly

20.5900, -8.1789, 10.0066

## Tritanomaly

20.2470, -4.5588, 15.5694

# Monochromacy



## Original Color

20.2640, -7.0322, 15.5545

## Achromatopsia

20.0000, 0.0000, 0.0000

## Achromatomaly

20.3490, -2.6371, 5.8329

# CSS Examples

## Text

The CSS property to change the color of the text to YUV 20.2640, -7.0322, 15.5545 is called "color". The color property can be set on classes, ids or directly on the HTML element.

This example shows how text in the color `rgb(38, 14, 6)` looks like.

```
.text, #text, p{  
    color:rgb(38, 14, 6)  
}
```

If you want to add a text shadow in that color use the text-shadow property, you can generate a text shadow directly with our [CSS Text Shadow Generator](#).

Here you see how black text with a 4 pixel rgb(38, 14, 6) colored shadow looks like.

```
.shadow{ text-shadow: 4px 4px 2px rgb(38, 14, 6) }
```

## Border

The CSS property to change the border of an element to YUV 20.2640, -7.0322, 15.5545 is called "border". The border property can be set on classes, ids or directly on the HTML element.

This example shows the color as border, it can be applied via the CSS property "border" or "border-color".

```
.border, #border, table{ border:4px solid rgb(38, 14, 6) }
```



If only the border color should be changed use the property border-color.

```
.border{ border-color:rgb(38, 14, 6) }
```

If you want to add a box shadow in that color use:

Here you see how a box with a 4 pixel rgb(38, 14, 6) colored shadow looks like.

```
.boxshadow{ -moz-box-shadow:4px 4px 4px  
4px rgb(38, 14, 6); -webkit-box-shadow:4px  
4px 4px 4px rgb(38, 14, 6); box-shadow:4px  
4px 4px 4px rgb(38, 14, 6) }
```

# Background

The CSS property to change the background color of an element to YUV 20.2640, -7.0322, 15.5545 is called "background". The background property can be set on classes, ids or directly on the HTML element.

```
.background, #background, body{  
background: rgb(38, 14, 6) }
```

If only the background color should be changed can be used:

```
.background{ background-color: rgb(38, 14,  
6) }
```

This example shows the color as background, it is applied via the CSS property "background".

To optimize and compress your CSS code, you can use our [online CSS compressor and optimizer](#) based on csstidy. If you want to create a linear or radial gradient as background or border, check our [CSS Gradient Generator](#).

# Hey! You found this booklet interesting? Support Converting Colors with the new Membership Option!

The pro membership hides all ads, plus gives you double the colors in the color bucket, and more awesome pro features!

**[Learn more, Memberships starting at \\$2.50/m!](#)**

**Follow me  
on Twitter!**

@ConvertingColor