

Converting Colors

YUV(200.0670, -18.2740,
28.0052)

Have a look what the booklet for
YUV(200.0670, -18.2740, 28.0052)
contains.

YUV(200.0670, -18.2740, 28.0052)	3
<i>Conversions</i>	4
<i>Details</i>	6
<i>Harmonies</i>	12
<i>Previews</i>	24
<i>Color Blindness Simulation</i>	28
<i>CSS Examples</i>	31

Color

**YUV(200.0670, -18.2740,
28.0052)**

Conversions

Conversions Part 1

Format	Color
Hex	E8BFA3
RGB	232, 191, 163
RGB Percent	91%, 75%, 64%
CMY	0.0902, 0.2510, 0.3608
CMYK	0.00, 0.18, 0.30, 0.09
HSL	24°, 60%, 77%
HSV	24°, 30%, 91%
XYZ	58.5204, 57.0618, 42.5800
YIQ	200.0670, 33.4240, -0.0160

Conversions

Conversions Part 2

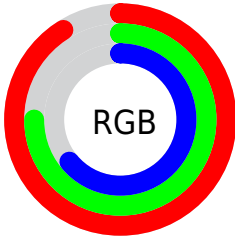
Format	Color
R_{YB}	232, 210, 163
Decimal	15253411
CIE Lab	80.21, 10.65, 19.63
CIE LCh	80, 22.332, 61.529
Yxy	57.0618, 0.3700, 0.3608
Android (android.graphics.Color)	4293443491 (0xFFE8BFA3)
YUV	200.0670, -18.2740, 28.0052
Hunter-Lab	75.5392, 6.0906, 19.4568

Details

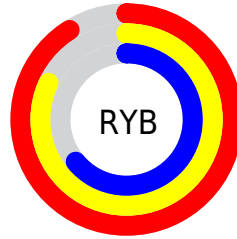
The YUV color $200.0670, -18.2740, 28.0052$ is a light color, and the websafe version is hex FFCC99 . A complement of this color would be $194.9330, 18.2740, -28.0052$, and the grayscale version is $200.0000, 0.0000, 0.0000$.

A 20% lighter version of the original color is $246.0860, -13.8464, 7.8176$, and $145.9850, -17.2476, 25.4462$ is the 20% darker color. If you saturate the color by 10%, you get $189.2270, -24.2689, 37.5119$, and if you desaturate by 10%, it is $210.9070, -12.2792, 18.4986$.

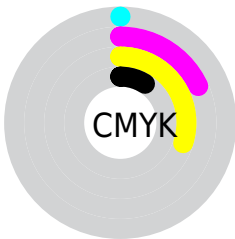
Distribution



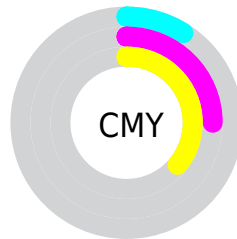
- Red (91%)
- Green (75%)
- Blue (64%)



- Red (91%)
- Yellow (82%)
- Blue (64%)



- Cyan (0%)
- Magenta (18%)
- Yellow (30%)
- Black (9%)



- Cyan (9%)
- Magenta (25%)
- Yellow (36%)

Brightness & Saturation Gradients

These gradients show how the YUV color 200.0670, -18.2740, 28.0052 changes by changing the brightness by 10 percent. The first figure shows a shift by +10% for each color and the second figure -10%.

Similar to the brightness gradients but the following saturation gradients show a change of the YUV color 200.0670, -18.2740, 28.0052 by changing the saturation by 10% instead.

200.0670,
-18.2740, 28.0052

200.0670,
-18.2740, 28.0052

255.0000, 0.0000,
0.0000

172.5830,
-17.5424, 26.6757

246.0860,
-13.8464, 7.8176

145.9850,
-17.2476, 25.4462

254.0880, -3.4944,
0.7998

119.9140,
-16.2266, 24.6314

95.0170, -15.7844,
22.7871

70.9460, -14.7634,
21.9724

48.1630, -13.8844,
20.0280

26.3800, -13.0053,

18.0837

■ 6.8770, -3.3904,
14.1399

■ 0.0000, 0.0000,
0.0000

■ 200.0670,
-18.2740, 28.0052

■ 200.0670,
-18.2740, 28.0052

■ 189.2270,
-24.2689, 37.5119

■ 210.9070,
-12.2792, 18.4986

■ 178.3870,
-30.2638, 47.0186

■ 221.7470, -6.2843,
8.9919

■ 168.0200,
-36.9849, 56.1105

■ 232.1140, 0.4368,
-0.1000

■ 157.1800,
-42.9797, 65.6171

■ 242.8400, 5.9949,
-9.5067

■ 146.3400,
-48.9746, 75.1238

■ 248.1230, 3.3904,
-14.1399

■ 135.5000,
-54.9695, 84.6305

■ 125.2470,
-61.2538, 93.6224

■ 124.5460,
-61.4012, 94.2372

Harmonies

Analogous

The Analogous color harmony consists of three colors that are next to each other on the color wheel.



201.8320, -11.7492, 35.2273



200.0670, -18.2740, 28.0052



198.1100, -20.2672, 13.9355

Triad

The Triadic color harmony groups three colors that are evenly spaced from another and form a triangle on the color wheel.



200.0670, -18.2740, 28.0052



191.0940, 3.8977, -36.9164



200.9630, 16.2872, 2.6634

Complementary

The Complementary color scheme is a pair of colors which are on the opposite of each other on the color wheel.



200.0670, -18.2740, 28.0052



194.9330, 18.2740, -28.0052

Split Complementary

Split-complementary colors differ from the complementary color scheme. The scheme consists of three colors, the original color and two neighbors of the complement color.



197.3840, 21.0097, -18.7538



200.0670, -18.2740, 28.0052



190.8080, 14.3917, -42.8046

Square

The Square scheme is like the rectangle color scheme, but the four colors are evenly spaced on the color wheel.



200.0670, -18.2740, 28.0052



192.9080, -7.3496, -22.7213



193.1600, 20.6271, -36.0973



202.6080, 8.0813, 21.3918

Rectangle

The Rectangle color scheme consists of four colors that form a rectangle on the color wheel.



200.0670, -18.2740, 28.0052



196.3150, -17.9033, 2.3547



193.1600, 20.6271, -36.0973



200.4890, 18.4929, -4.8139

Sweetspot

The Sweet Spot groups the original color and five complimentary colors.



200.0670, -18.2740, 28.0052



244.1600, -5.9949, 9.5067



188.3050, 7.7376, 38.3205



121.0070, -3.9475, 6.1329



0.0000, 0.0000, 0.0000



128.0000, 0.0000, 0.0000

Same Dimension

The Same Dimension uses a secret algorithm to generate beautiful new colors.



200.0670, -18.2740, 28.0052



212.2270, -24.2689, 37.5119



220.0250, -28.1133, 10.5021



109.5230, -3.2158, 4.8033



95.7850, -47.2220, 72.9796



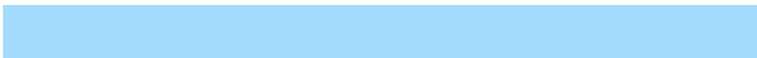
27.5760, -13.5950, 20.5428

Inverse Universe

The Inverse Universe completely reimagines the original color for something new.



194.9330, 18.2740, -28.0052



205.7730, 24.2689, -37.5119



174.9750, 28.1133, -10.5021



108.4770, 3.2158, -4.8033



82.6280, 47.5114, -72.4648



23.4240, 13.5950, -20.5428

Previews

White Background



This preview shows how the YUV color 200.0670, -18.2740, 28.0052 looks on a white background.

Color Contrast Check

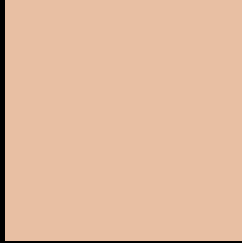
Large Text (above 18pt) WCAG AA × Fail

Any Text WCAG AA × Fail

Large Text (above 18pt) WCAG AAA × Fail

Any Text WCAG AAA × Fail

Black Background



This preview shows how the YUV color 200.0670, -18.2740, 28.0052 looks on a black background.

Color Contrast Check

Large Text (above 18pt) WCAG AA ✓ Pass

Any Text WCAG AA ✓ Pass

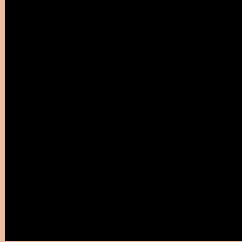
Large Text (above 18pt) WCAG AAA ✓ Pass

Any Text WCAG AAA ✓ Pass

If you want to check with other color combinations, try the [Color Contrast Checker](#).

YUV 200.0670, -18.2740, 28.0052

Background



This preview shows how black text looks on a background with the YUV color 200.0670, -18.2740, 28.0052.



This preview shows how white text looks on a background with the YUV color 200.0670, -18.2740,

Color Blindness Simulation

Color vision deficiency is a very complex topic, and I could not describe the different causes any better than Wikipedia does, so if you want to learn more, you should check out their [article about color blindness](#).

Dichromacy



Original Color

200.0670, -18.2740, 28.0052

Protanopia

198.6410, -15.5990, 9.9618

Deuteranopia

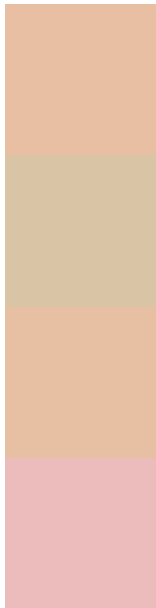
199.7680, -18.1266, 27.3905



Tritanopia

202.5460, -1.2552, 29.3392

Trichromacy



Original Color

200.0670, -18.2740, 28.0052

Protanomaly

199.1580, -16.3469, 16.5244

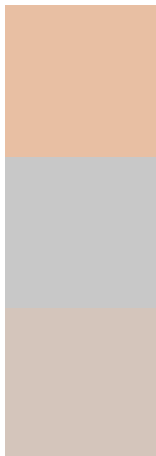
Deuteranomaly

199.7680, -18.1266, 27.3905

Tritanomaly

201.9390, -7.3649, 28.9945

Monochromacy



Original Color

200.0670, -18.2740, 28.0052

Achromatopsia

200.0000, 0.0000, 0.0000

Achromatomaly

200.3450, -6.5791, 10.2214

CSS Examples

Text

The CSS property to change the color of the text to YUV 200.0670, -18.2740, 28.0052 is called "color". The color property can be set on classes, ids or directly on the HTML element.

This example shows how text in the color `rgb(232, 191, 163)` looks like.

```
.text, #text, p{  
    color:rgb(232, 191, 163)  
}
```

If you want to add a text shadow in that color use the text-shadow property, you can generate a text shadow directly with our [CSS Text Shadow Generator](#).

Here you see how black text with a 4 pixel rgb(232, 191, 163) colored shadow looks like.

```
.shadow{ text-shadow: 4px 4px 2px rgb(232, 191, 163) }
```

Border

The CSS property to change the border of an element to YUV 200.0670, -18.2740, 28.0052 is called "border".

The border property can be set on classes, ids or directly on the HTML element.

This example shows the color as border, it can be applied via the CSS property "border" or "border-color".

```
.border, #border, table{ border:4px solid rgb(232, 191, 163) }
```


If only the border color should be changed use the property `border-color`.

```
.border{ border-color:rgb(232, 191, 163) }
```

If you want to add a box shadow in that color use:

Here you see how a box with a 4 pixel `rgb(232, 191, 163)` colored shadow looks like.

```
.boxshadow{ -moz-box-shadow:4px 4px 4px  
4px rgb(232, 191, 163); -webkit-box-  
shadow:4px 4px 4px 4px rgb(232, 191, 163);  
box-shadow:4px 4px 4px 4px rgb(232, 191,  
163) }
```

Background

The CSS property to change the background color of an element to YUV 200.0670, -18.2740, 28.0052 is called "background". The background property can be set on classes, ids or directly on the HTML element.

```
.background, #background, body{  
background: rgb(232, 191, 163) }
```

If only the background color should be changed can be used:

```
.background{ background-color: rgb(232,  
191, 163) }
```

This example shows the color as background, it is applied via the CSS property "background".

To optimize and compress your CSS code, you can use our [online CSS compressor and optimizer](#) based on csstidy. If you want to create a linear or radial gradient as background or border, check our [CSS Gradient Generator](#).

Hey! You found this booklet interesting? Support Converting Colors with the new Membership Option!

The pro membership hides all ads, plus gives you double the colors in the color bucket, and more awesome pro features!

[Learn more, Memberships starting at \\$2.50/m!](#)

**Follow me
on Twitter!**

@ConvertingColor