

Converting Colors

YUV(200.1590, -1.0644,
14.7696)

Have a look what the booklet for
YUV(200.1590, -1.0644, 14.7696)
contains.

YUV(200.1590, -1.0644, 14.7696)	3
<i>Conversions</i>	4
<i>Details</i>	6
<i>Harmonies</i>	12
<i>Previews</i>	24
<i>Color Blindness Simulation</i>	28
<i>CSS Examples</i>	31

Color

**YUV(200.1590, -1.0644,
14.7696)**

Conversions

Conversions Part 1

Format	Color
Hex	D9C0C6
RGB	217, 192, 198
RGB Percent	85%, 75%, 78%
CMY	0.1490, 0.2471, 0.2235
CMYK	0.00, 0.12, 0.09, 0.15
HSL	346°, 25%, 80%
HSV	346°, 12%, 85%
XYZ	57.6580, 56.5282, 61.2982
YIQ	200.1590, 12.9740, 7.1660

Conversions

Conversions Part 2

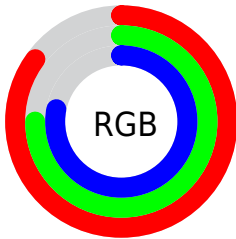
Format	Color
R _Y B	217, 192, 198
Decimal	14270662
CIE Lab	79.91, 9.84, 0.23
CIE LCh	80, 9.845, 1.312
Yxy	56.5282, 0.3286, 0.3221
Android (android.graphics.Color)	4292460742 (0xFFD9C0C6)
YUV	200.1590, -1.0644, 14.7696
Hunter-Lab	75.1852, 5.3137, 4.2908

Details

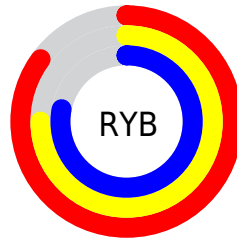
The YUV color $200.1590, -1.0644, 14.7696$ is a light color, and the websafe version is hex `CCCCCC`. A complement of this color would be $208.8410, 1.0644, -14.7696$, and the grayscale version is $200.0000, 0.0000, 0.0000$.

A 20% lighter version of the original color is $250.8910, 2.0257, 3.6036$, and $146.4470, -1.2064, 13.6400$ is the 20% darker color. If you saturate the color by 10%, you get $185.4210, -1.6866, 27.6948$, and if you desaturate by 10%, it is $214.8970, -0.4422, 1.8443$.

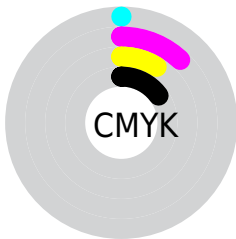
Distribution



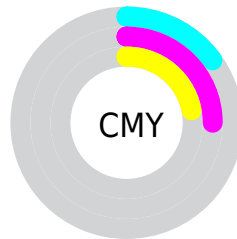
- Red (85%)
- Green (75%)
- Blue (78%)



- Red (85%)
- Yellow (75%)
- Blue (78%)



- Cyan (0%)
- Magenta (12%)
- Yellow (9%)
- Black (15%)



- Cyan (15%)
- Magenta (25%)
- Yellow (22%)

Brightness & Saturation Gradients

These gradients show how the YUV color 200.1590, -1.0644, 14.7696 changes by changing the brightness by 10 percent. The first figure shows a shift by +10% for each color and the second figure -10%.

Similar to the brightness gradients but the following saturation gradients show a change of the YUV color 200.1590, -1.0644, 14.7696 by changing the saturation by 10% instead.

■ 200.1590, -1.0644,
14.7696

■ 200.1590, -1.0644,
14.7696

255.0000, 0.0000,
0.0000

■ 172.8600, -0.9170,
14.1548

■ 250.8910, 2.0257,
3.6036

■ 146.4470, -1.2064,
13.6400

■ 120.5610, -0.7696,
13.5400

■ 95.8490, -0.9116,
12.4104

■ 71.8490, -0.9116,
12.4104

■ 49.2510, -0.6167,
11.1809

■ 27.9520, -0.4693,

10.5661

■ 6.2790, -3.0955,
12.9103

■ 0.0000, 0.0000,
0.0000

■ 200.1590, -1.0644,
14.7696

■ 200.1590, -1.0644,
14.7696

■ 185.4210, -1.6866,
27.6948

■ 214.8970, -0.4422,
1.8443

■ 171.1560, -3.0349,
40.2052

■ 229.1620, 0.9061,
-10.6661

■ 156.4180, -3.6571,
53.1304

■ 242.7260, 2.1071,
-22.5617

■ 141.5660, -4.7160,
66.1556

■ 243.6380, 5.6015,
-23.3615

■ 127.4150, -5.6276,
78.5660

■ 112.5630, -6.6866,
91.5912

■ 97.8250, -7.3087,
104.5165

■ 82.9730, -8.3677,
117.5417

■ 70.8110, -9.2738,
128.2078

Harmonies

Analogous

The Analogous color harmony consists of three colors that are next to each other on the color wheel.



199.9780, 3.4618, 9.6663



200.1590, -1.0644, 14.7696



200.0190, -5.4324, 15.7693

Triad

The Triadic color harmony groups three colors that are evenly spaced from another and form a triangle on the color wheel.



200.1590, -1.0644, 14.7696



196.4530, -7.1253, -1.2743



196.2030, 8.7739, -14.2100

Complementary

The Complementary color scheme is a pair of colors which are on the opposite of each other on the color wheel.



200.1590, -1.0644, 14.7696



208.8410, 1.0644, -14.7696

Split Complementary

Split-complementary colors differ from the complementary color scheme. The scheme consists of three colors, the original color and two neighbors of the complement color.



195.3830, 5.7272, -16.9989



200.1590, -1.0644, 14.7696



196.0220, -3.4618, -9.6663

Square

The Square scheme is like the rectangle color scheme, but the four colors are evenly spaced on the color wheel.



200.1590, -1.0644, 14.7696



198.3400, -9.0416, 6.7178



195.5420, 1.2118, -15.3843



197.9480, 8.8996, -7.8474

Rectangle

The Rectangle color scheme consists of four colors that form a rectangle on the color wheel.



200.1590, -1.0644, 14.7696



199.4380, -7.6109, 14.5249



195.5420, 1.2118, -15.3843



195.9640, 7.9057, -15.7544

Sweetspot

The Sweet Spot groups the original color and five complimentary colors.



200.1590, -1.0644, 14.7696



249.6200, -0.3057, 4.7183



200.5310, 8.1192, 9.1813



124.0220, -0.0108, 3.4887



0.0000, 0.0000, 0.0000



128.0000, 0.0000, 0.0000

Same Dimension

The Same Dimension uses a secret algorithm to generate beautiful new colors.



200.1590, -1.0644, 14.7696



230.7900, -1.3755, 21.2322



202.9970, -5.4215, 12.2806



102.5170, -0.7479, 6.5626



56.5150, -7.1559, 102.1573



15.0080, -1.9759, 27.1800

Inverse Universe

The Inverse Universe completely reimagines the original color for something new.



200.1590, -1.0644, 14.7696



230.7900, -1.3755, 21.2322



206.0030, 5.4215, -12.2806



102.5170, -0.7479, 6.5626



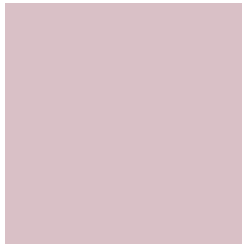
56.5150, -7.1559, 102.1573



15.0080, -1.9759, 27.1800

Previews

White Background



This preview shows how the YUV color 200.1590, -1.0644, 14.7696 looks on a white background.

Color Contrast Check

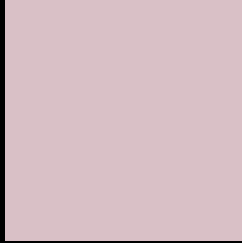
Large Text (above 18pt) WCAG AA × Fail

Any Text WCAG AA × Fail

Large Text (above 18pt) WCAG AAA × Fail

Any Text WCAG AAA × Fail

Black Background



This preview shows how the YUV color 200.1590, -1.0644, 14.7696 looks on a black background.

Color Contrast Check

Large Text (above 18pt) WCAG AA ✓ Pass

Any Text WCAG AA ✓ Pass

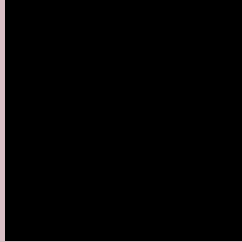
Large Text (above 18pt) WCAG AAA ✓ Pass

Any Text WCAG AAA ✓ Pass

If you want to check with other color combinations, try the [Color Contrast Checker](#).

YUV 200.1590, -1.0644, 14.7696

Background



This preview shows how black text looks on a background with the YUV color 200.1590, -1.0644, 14.7696.



This preview shows how white text looks on a background with the YUV color 200.1590, -1.0644,

Color Blindness Simulation

Color vision deficiency is a very complex topic, and I could not describe the different causes any better than Wikipedia does, so if you want to learn more, you should check out their [article about color blindness](#).

Dichromacy



Original Color

200.1590, -1.0644, 14.7696

Protanopia

198.6520, 1.1576, 2.0592

Deuteranopia

200.1590, -1.0644, 14.7696



Tritanopia

200.7830, 2.5720, 15.0993

Trichromacy



Original Color

200.1590, -1.0644, 14.7696

Protanomaly

199.1580, 0.4151, 6.8774

Deuteranomaly

200.1590, -1.0644, 14.7696

Tritanomaly

200.4410, 1.2616, 15.3992

Monochromacy



Original Color

200.1590, -1.0644, 14.7696

Achromatopsia

200.0000, 0.0000, 0.0000

Achromatomaly

199.9190, -0.4531, 5.3330

CSS Examples

Text

The CSS property to change the color of the text to YUV 200.1590, -1.0644, 14.7696 is called "color". The color property can be set on classes, ids or directly on the HTML element.

This example shows how text in the color `rgb(217, 192, 198)` looks like.

```
.text, #text, p{  
    color:rgb(217, 192, 198)  
}
```

If you want to add a text shadow in that color use the text-shadow property, you can generate a text shadow directly with our [CSS Text Shadow Generator](#).

Here you see how black text with a 4 pixel rgb(217, 192, 198) colored shadow looks like.

```
.shadow{ text-shadow: 4px 4px 2px rgb(217, 192, 198) }
```

Border

The CSS property to change the border of an element to YUV 200.1590, -1.0644, 14.7696 is called "border". The border property can be set on classes, ids or directly on the HTML element.

This example shows the color as border, it can be applied via the CSS property "border" or "border-color".

```
.border, #border, table{ border:4px solid rgb(217, 192, 198) }
```


If only the border color should be changed use the property `border-color`.

```
.border{ border-color:rgb(217, 192, 198) }
```

If you want to add a box shadow in that color use:

Here you see how a box with a 4 pixel `rgb(217, 192, 198)` colored shadow looks like.

```
.boxshadow{ -moz-box-shadow:4px 4px 4px  
4px rgb(217, 192, 198); -webkit-box-  
shadow:4px 4px 4px 4px rgb(217, 192, 198);  
box-shadow:4px 4px 4px 4px rgb(217, 192,  
198) }
```

Background

The CSS property to change the background color of an element to YUV 200.1590, -1.0644, 14.7696 is called "background". The background property can be set on classes, ids or directly on the HTML element.

```
.background, #background, body{  
background: rgb(217, 192, 198) }
```

If only the background color should be changed can be used:

```
.background{ background-color: rgb(217,  
192, 198) }
```

This example shows the color as background, it is applied via the CSS property "background".

To optimize and compress your CSS code, you can use our [online CSS compressor and optimizer](#) based on csstidy. If you want to create a linear or radial gradient as background or border, check our [CSS Gradient Generator](#).

Hey! You found this booklet interesting? Support Converting Colors with the new Membership Option!

The pro membership hides all ads, plus gives you double the colors in the color bucket, and more awesome pro features!

[Learn more, Memberships starting at \\$2.50/m!](#)

**Follow me
on Twitter!**

@ConvertingColor