

# Converting Colors

YUV(200.2260, -6.0274,  
19.9728)

Have a look what the booklet for  
YUV(200.2260, -6.0274, 19.9728)  
contains.

<b>YUV(200.2260, -6.0274, 19.9728)</b> .....	3
<b><i>Conversions</i></b> .....	4
<b><i>Details</i></b> .....	6
<b><i>Harmonies</i></b> .....	12
<b><i>Previews</i></b> .....	24
<b><i>Color Blindness Simulation</i></b> .....	28
<b><i>CSS Examples</i></b> .....	31

# Color

**YUV(200.2260, -6.0274,  
19.9728)**

# Conversions

## Conversions Part 1

Format	Color
Hex	DFBFBC
RGB	223, 191, 188
RGB Percent	87%, 75%, 74%
CMY	0.1255, 0.2510, 0.2627
CMYK	0.00, 0.14, 0.16, 0.13
HSL	5°, 35%, 81%
HSV	5°, 16%, 87%
XYZ	58.1393, 56.5804, 55.4338
YIQ	200.2260, 20.0350, 5.8510

# Conversions

## Conversions Part 2

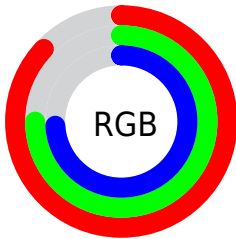
<b>Format</b>	<b>Color</b>
<b>R<sub>YB</sub></b>	223, 191, 188
Decimal	14663612
CIE <sub>Lab</sub>	79.94, 10.89, 5.72
CIE <sub>LCh</sub>	80, 12.301, 27.712
Yxy	56.5804, 0.3417, 0.3325
Android (android.graphics.Color)	4292853692 (0xFFDFBFBBC)
YUV	200.2260, -6.0274, 19.9728
Hunter-Lab	75.2200, 6.3321, 8.9599

# Details

The YUV color  $200.2260, -6.0274, 19.9728$  is a light color, and the websafe version is hex  $\text{FFCCCC}$ . A complement of this color would be  $210.7740, 6.0274, -19.9728$ , and the grayscale version is  $200.0000, 0.0000, 0.0000$ .

A 20% lighter version of the original color is  $249.0500, -2.4896, 5.2182$ , and  $146.3290, -5.5852, 18.1285$  is the 20% darker color. If you saturate the color by 10%, you get  $185.9780, -9.8492, 32.4683$ , and if you desaturate by 10%, it is  $214.4740, -2.2057, 7.4773$ .

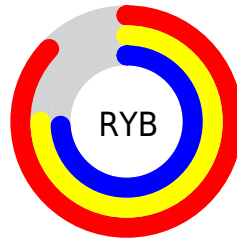
# Distribution



Red (87%)

Green (75%)

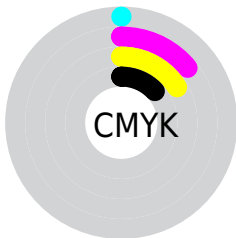
Blue (74%)



Red (87%)

Yellow (75%)

Blue (74%)

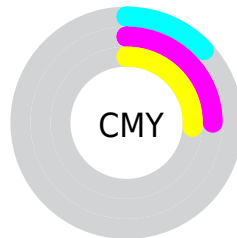


Cyan (0%)

Magenta (14%)

Yellow (16%)

Black (13%)



Cyan (13%)

Magenta (25%)

Yellow (26%)

# Brightness & Saturation Gradients

These gradients show how the YUV color 200.2260, -6.0274, 19.9728 changes by changing the brightness by 10 percent. The first figure shows a shift by +10% for each color and the second figure -10%.

Similar to the brightness gradients but the following saturation gradients show a change of the YUV color 200.2260, -6.0274, 19.9728 by changing the saturation by 10% instead.



 200.2260, -6.0274,  
19.9728


 200.2260, -6.0274,  
19.9728


255.0000, 0.0000,  
0.0000


 172.9270, -5.8800,  
19.3580


 249.0500, -2.4896,  
5.2182

 146.3290, -5.5852,  
18.1285

 120.4430, -5.1484,  
18.0285

 95.7310, -5.2904,  
16.8989

 71.5460, -4.7062,  
16.1842

 48.9480, -4.4114,  
14.9546

 27.4640, -3.6798,

13.6251

■ 6.8770, -3.3904,  
14.1399

■ 0.0000, 0.0000,  
0.0000

■ 200.2260, -6.0274,  
19.9728

■ 200.2260, -6.0274,  
19.9728

■ 185.9780, -9.8492,  
32.4683

■ 214.4740, -2.2057,  
7.4773

■ 171.0290,  
-13.8183, 45.5786

■ 229.4230, 1.7635,  
-5.6330

■ 156.7810,  
-17.6400, 58.0741

■ 243.6710, 5.5852,  
-18.1285

■ 141.9460,  
-21.1724, 71.0844

■ 245.4320, 4.7170,  
-19.6729

■ 127.6980,  
-24.9941, 83.5799

■ 113.3360,  
-29.2526, 96.1753

■ 98.5010, -32.7850,  
109.1856

■ 84.2530, -36.6067,  
121.6811

■ 77.8300, -38.3702,  
127.3141

# Harmonies

## Analogous

The Analogous color harmony consists of three colors that are next to each other on the color wheel.



200.8820, -0.9278, 17.6435



200.2260, -6.0274, 19.9728



198.8790, -9.8003, 16.7691

# Triad

The Triadic color harmony groups three colors that are evenly spaced from another and form a triangle on the color wheel.



200.2260, -6.0274, 19.9728



195.6690, -4.7668, -11.1107



197.3220, 11.6733, -10.8064

# Complementary

The Complementary color scheme is a pair of colors which are on the opposite of each other on the color wheel.



200.2260, -6.0274, 19.9728



210.7740, 6.0274, -19.9728

# Split Complementary

Split-complementary colors differ from the complementary color scheme. The scheme consists of three colors, the original color and two neighbors of the complement color.



195.9250, 10.3900, -19.2282



200.2260, -6.0274, 19.9728



194.5200, 1.2226, -18.8730

# Square

The Square scheme is like the rectangle color scheme, but the four colors are evenly spaced on the color wheel.



200.2260, -6.0274, 19.9728



196.8830, -9.3093, -0.7744



194.5780, 6.6170, -22.4319



199.7040, 9.0199, 0.2596



# Rectangle

The Rectangle color scheme consists of four colors that form a rectangle on the color wheel.



200.2260, -6.0274, 19.9728



198.5040, -11.0945, 11.8360



194.5780, 6.6170, -22.4319



197.1860, 11.2473, -14.1951

# Sweetspot

The Sweet Spot groups the original color and five complimentary colors.



200.2260, -6.0274, 19.9728



246.4740, -2.2057, 7.4773



202.1130, 8.8183, 18.3179



122.9790, -1.4686, 4.4034



0.0000, 0.0000, 0.0000



128.0000, 0.0000, 0.0000



# Same Dimension

The Same Dimension uses a secret algorithm to generate beautiful new colors.



200.2260, -6.0274, 19.9728



223.7000, -8.2331, 27.4501



210.2050, -10.9471, 11.2212



104.8760, -1.9109, 6.2477



61.4290, -30.2845, 100.4788



16.7000, -8.2331, 27.4501



# Inverse Universe

The Inverse Universe completely reimagines the original color for something new.



210.7740, 6.0274, -19.9728



238.3000, 8.2331, -27.4501



200.7950, 10.9471, -11.2212



108.1240, 1.9109, -6.2477



114.5710, 30.2845, -100.4788



31.3000, 8.2331, -27.4501



# Previews

## White Background



This preview shows how the YUV color 200.2260, -6.0274, 19.9728 looks on a white background.

## Color Contrast Check

Large Text (above 18pt) WCAG AA × Fail

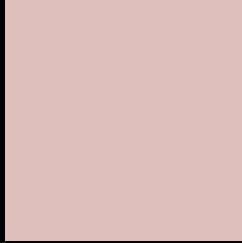
Any Text WCAG AA × Fail

Large Text (above 18pt) WCAG AAA × Fail

Any Text WCAG AAA × Fail



# Black Background



This preview shows how the YUV color 200.2260, -6.0274, 19.9728 looks on a black background.

## Color Contrast Check

Large Text (above 18pt) WCAG AA ✓ Pass

Any Text WCAG AA ✓ Pass

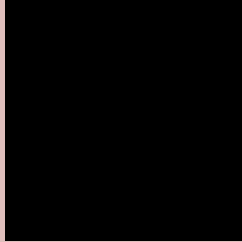
Large Text (above 18pt) WCAG AAA ✓ Pass

Any Text WCAG AAA ✓ Pass

If you want to check with other color combinations, try the [Color Contrast Checker](#).

# YUV 200.2260, -6.0274, 19.9728

## Background



This preview shows how black text looks on a background with the YUV color 200.2260, -6.0274, 19.9728.



This preview shows how white text looks on a background with the YUV color 200.2260, -6.0274,



# Color Blindness Simulation

Color vision deficiency is a very complex topic, and I could not describe the different causes any better than Wikipedia does, so if you want to learn more, you should check out their [article about color blindness](#).

## Dichromacy



### Original Color

200.2260, -6.0274, 19.9728

### Protanopia

198.8110, -3.3578, 3.6738

### Deuteranopia

200.2150, -6.0220, 18.2284



## Tritanopia

201.3600, 0.8085, 20.7323

# Trichromacy



## Original Color

200.2260, -6.0274, 19.9728

## Protanomaly

199.0290, -3.9583, 9.6216

## Deuteranomaly

200.5140, -6.1694, 18.8432

## Tritanomaly

201.0780, -1.5175, 20.1026

# Monochromacy



## Original Color

200.2260, -6.0274, 19.9728

## Achromatopsia

200.0000, 0.0000, 0.0000

## Achromatomaly

200.1750, -2.0583, 6.8625

# CSS Examples

## Text

The CSS property to change the color of the text to YUV 200.2260, -6.0274, 19.9728 is called "color". The color property can be set on classes, ids or directly on the HTML element.

This example shows how text in the color `rgb(223, 191, 188)` looks like.

```
.text, #text, p{  
    color:rgb(223, 191, 188)  
}
```

If you want to add a text shadow in that color use the text-shadow property, you can generate a text shadow directly with our [CSS Text Shadow Generator](#).

Here you see how black text with a 4 pixel rgb(223, 191, 188) colored shadow looks like.

```
.shadow{ text-shadow: 4px 4px 2px rgb(223, 191, 188) }
```

## Border

The CSS property to change the border of an element to YUV 200.2260, -6.0274, 19.9728 is called "border". The border property can be set on classes, ids or directly on the HTML element.

This example shows the color as border, it can be applied via the CSS property "border" or "border-color".

```
.border, #border, table{ border:4px solid rgb(223, 191, 188) }
```



If only the border color should be changed use the property `border-color`.

```
.border{ border-color:rgb(223, 191, 188) }
```

If you want to add a box shadow in that color use:

Here you see how a box with a 4 pixel `rgb(223, 191, 188)` colored shadow looks like.

```
.boxshadow{ -moz-box-shadow:4px 4px 4px  
4px rgb(223, 191, 188); -webkit-box-  
shadow:4px 4px 4px 4px rgb(223, 191, 188);  
box-shadow:4px 4px 4px 4px rgb(223, 191,  
188) }
```

# Background

The CSS property to change the background color of an element to YUV 200.2260, -6.0274, 19.9728 is called "background". The background property can be set on classes, ids or directly on the HTML element.

```
.background, #background, body{  
background: rgb(223, 191, 188) }
```

If only the background color should be changed can be used:

```
.background{ background-color: rgb(223,  
191, 188) }
```

This example shows the color as background, it is applied via the CSS property "background".

To optimize and compress your CSS code, you can use our [online CSS compressor and optimizer](#) based on csstidy. If you want to create a linear or radial gradient as background or border, check our [CSS Gradient Generator](#).

Hey! You found this booklet interesting? Support Converting Colors with the new Membership Option!

The pro membership hides all ads, plus gives you double the colors in the color bucket, and more awesome pro features!

**[Learn more, Memberships starting at \\$2.50/m!](#)**

**Follow me  
on Twitter!**

@ConvertingColor