

Converting Colors

YUV(200.2330, -9.9749,
26.1057)

Have a look what the booklet for
YUV(200.2330, -9.9749, 26.1057)
contains.

YUV(200.2330, -9.9749, 26.1057)	3
<i>Conversions</i>	4
<i>Details</i>	6
<i>Harmonies</i>	12
<i>Previews</i>	24
<i>Color Blindness Simulation</i>	28
<i>CSS Examples</i>	31

Color

**YUV(200.2330, -9.9749,
26.1057)**

Conversions

Conversions Part 1

Format	Color
Hex	E6BDB4
RGB	230, 189, 180
RGB Percent	90%, 74%, 71%
CMY	0.0980, 0.2588, 0.2941
CMYK	0.00, 0.18, 0.22, 0.10
HSL	11°, 50%, 80%
HSV	11°, 22%, 90%
XYZ	59.0689, 56.5135, 50.9749
YIQ	200.2330, 27.3250, 5.8930

Conversions

Conversions Part 2

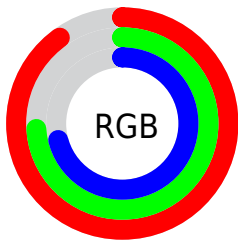
Format	Color
R _Y B	230, 191, 180
Decimal	15121844
CIE Lab	79.91, 13.30, 10.06
CIE LCh	80, 16.677, 37.088
Yxy	56.5135, 0.3546, 0.3393
Android (android.graphics.Color)	4293311924 (0xFFE6BDB4)
YUV	200.2330, -9.9749, 26.1057
Hunter-Lab	75.1754, 8.6990, 12.4195

Details

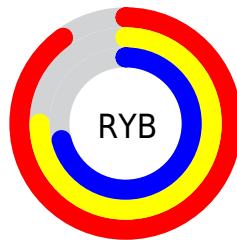
The YUV color $200.2330, -9.9749, 26.1057$ is a light color, and the websafe version is hex FFCCCC . A complement of this color would be $209.7670, 9.9749, -26.1057$, and the grayscale version is $200.0000, 0.0000, 0.0000$.

A 20% lighter version of the original color is $246.9640, -5.4053, 7.0476$, and $146.3360, -9.5326, 24.2613$ is the 20% darker color. If you saturate the color by 10%, you get $186.4580, -14.5228, 38.1863$, and if you desaturate by 10%, it is $214.0080, -5.4269, 14.0250$.

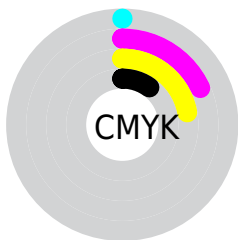
Distribution



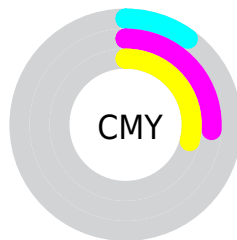
- Red (90%)
- Green (74%)
- Blue (71%)



- Red (90%)
- Yellow (75%)
- Blue (71%)



- Cyan (0%)
- Magenta (18%)
- Yellow (22%)
- Black (10%)





- Cyan (10%)
- Magenta (26%)
- Yellow (29%)

Brightness & Saturation Gradients

These gradients show how the YUV color 200.2330, -9.9749, 26.1057 changes by changing the brightness by 10 percent. The first figure shows a shift by +10% for each color and the second figure -10%.


Similar to the brightness gradients but the following saturation gradients show a change of the YUV color 200.2330, -9.9749, 26.1057 by changing the saturation by 10% instead.

 200.2330, -9.9749,
26.1057


 200.2330, -9.9749,
26.1057


255.0000, 0.0000,
0.0000


 172.9340, -9.8275,
25.4909


 246.9640, -5.4053,
7.0476

 146.3360, -9.5326,
24.2613

 120.1510, -8.9484,
23.5466

 95.2540, -8.5062,
21.7022

 71.0690, -7.9220,
20.9875

 48.2860, -7.0430,
19.0432

 26.5740, -7.1850,

17.9136

■ 7.8880, -3.3958,
15.8842

■ 0.0000, 0.0000,
0.0000

■ 200.2330, -9.9749,
26.1057

■ 200.2330, -9.9749,
26.1057

■ 186.4580,
-14.5228, 38.1863

■ 214.0080, -5.4269,
14.0250

■ 172.6830,
-19.0707, 50.2670

■ 227.7830, -0.8790,
1.9443

■ 158.9080,
-23.6186, 62.3477

■ 241.5580, 3.6689,
-10.1364

■ 145.7200,
-28.4560, 73.9136

■ 247.5250, 3.6852,
-15.3694

■ 131.9450,
-33.0039, 85.9942

■ 118.1700,
-37.5518, 98.0749

■ 104.3950,
-42.0997, 110.1556

■ 92.8370, -45.7686,
120.2920

Harmonies

Analogous

The Analogous color harmony consists of three colors that are next to each other on the color wheel.



200.7690, -2.8441, 25.6356



200.2330, -9.9749, 26.1057



198.7500, -14.1738, 19.5132

Triad

The Triadic color harmony groups three colors that are evenly spaced from another and form a triangle on the color wheel.



200.2330, -9.9749, 26.1057



193.5540, -3.7241, -18.9029



197.9460, 15.3096, -10.4766

Complementary

The Complementary color scheme is a pair of colors which are on the opposite of each other on the color wheel.



200.2330, -9.9749, 26.1057



209.7670, 9.9749, -26.1057

Split Complementary

Split-complementary colors differ from the complementary color scheme. The scheme consists of three colors, the original color and two neighbors of the complement color.



195.1570, 15.2056, -23.8167



200.2330, -9.9749, 26.1057



192.2630, 4.3073, -28.2947

Square

The Square scheme is like the rectangle color scheme, but the four colors are evenly spaced on the color wheel.



200.2330, -9.9749, 26.1057



195.3940, -11.0402, -5.6075



192.7880, 11.4435, -30.5091



200.3070, 11.1876, 4.9928

Rectangle

The Rectangle color scheme consists of four colors that form a rectangle on the color wheel.



200.2330, -9.9749, 26.1057



197.4780, -15.0257, 12.7358



192.7880, 11.4435, -30.5091



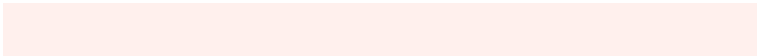
197.0270, 15.7627, -15.8097

Sweetspot

The Sweet Spot groups the original color and five complimentary colors.



200.2330, -9.9749, 26.1057



244.1430, -3.5215, 9.5216



199.7380, 10.9752, 26.5398



121.4630, -2.2003, 5.7329



0.0000, 0.0000, 0.0000



128.0000, 0.0000, 0.0000

Same Dimension

The Same Dimension uses a secret algorithm to generate beautiful new colors.



200.2330, -9.9749, 26.1057



215.7780, -13.2016, 34.3977



214.3210, -16.9203, 13.7505



107.7620, -2.3477, 6.3477



72.3050, -35.6464, 93.5715



20.5320, -10.1223, 26.7204

Inverse Universe

The Inverse Universe completely reimagines the original color for something new.



209.7670, 9.9749, -26.1057



228.2220, 13.2016, -34.3977



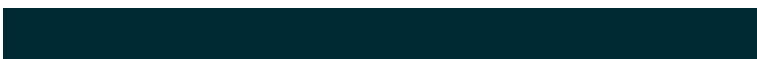
195.6790, 16.9203, -13.7505



110.2380, 2.3477, -6.3477



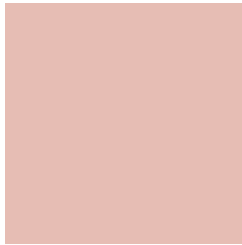
106.1080, 35.9358, -93.0567



30.4680, 10.1223, -26.7204

Previews

White Background



This preview shows how the YUV color 200.2330, -9.9749, 26.1057 looks on a white background.

Color Contrast Check

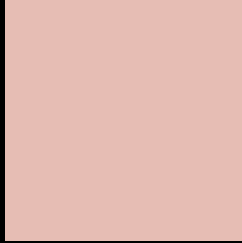
Large Text (above 18pt) WCAG AA × Fail

Any Text WCAG AA × Fail

Large Text (above 18pt) WCAG AAA × Fail

Any Text WCAG AAA × Fail

Black Background



This preview shows how the YUV color 200.2330, -9.9749, 26.1057 looks on a black background.

Color Contrast Check

Large Text (above 18pt) WCAG AA ✓ Pass

Any Text WCAG AA ✓ Pass

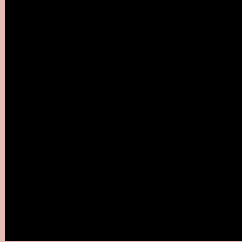
Large Text (above 18pt) WCAG AAA ✓ Pass

Any Text WCAG AAA ✓ Pass

If you want to check with other color combinations, try the [Color Contrast Checker](#).

YUV 200.2330, -9.9749, 26.1057

Background



This preview shows how black text looks on a background with the YUV color 200.2330, -9.9749, 26.1057.



This preview shows how white text looks on a background with the YUV color 200.2330, -9.9749,

Color Blindness Simulation

Color vision deficiency is a very complex topic, and I could not describe the different causes any better than Wikipedia does, so if you want to learn more, you should check out their [article about color blindness](#).

Dichromacy



Original Color

200.2330, -9.9749, 26.1057

Protanopia

198.6110, -6.7102, 5.6032

Deuteranopia

199.6130, -9.6692, 21.3874



Tritanopia

201.3500, -0.6655, 26.8801

Trichromacy



Original Color

200.2330, -9.9749, 26.1057

Protanomaly

199.3130, -8.0423, 12.8805

Deuteranomaly

199.6240, -9.6746, 23.1318

Tritanomaly

200.8400, -3.8651, 26.4503

Monochromacy



Original Color

200.2330, -9.9749, 26.1057

Achromatopsia

200.0000, 0.0000, 0.0000

Achromatomaly

200.1430, -3.5215, 9.5216

CSS Examples

Text

The CSS property to change the color of the text to YUV 200.2330, -9.9749, 26.1057 is called "color". The color property can be set on classes, ids or directly on the HTML element.

This example shows how text in the color `rgb(230, 189, 180)` looks like.

```
.text, #text, p{  
    color:rgb(230, 189, 180)  
}
```

If you want to add a text shadow in that color use the text-shadow property, you can generate a text shadow directly with our [CSS Text Shadow Generator](#).

Here you see how black text with a 4 pixel rgb(230, 189, 180) colored shadow looks like.

```
.shadow{ text-shadow: 4px 4px 2px rgb(230, 189, 180) }
```

Border

The CSS property to change the border of an element to YUV 200.2330, -9.9749, 26.1057 is called "border". The border property can be set on classes, ids or directly on the HTML element.

This example shows the color as border, it can be applied via the CSS property "border" or "border-color".

```
.border, #border, table{ border:4px solid rgb(230, 189, 180) }
```


If only the border color should be changed use the property `border-color`.

```
.border{ border-color:rgb(230, 189, 180) }
```

If you want to add a box shadow in that color use:

Here you see how a box with a 4 pixel `rgb(230, 189, 180)` colored shadow looks like.

```
.boxshadow{ -moz-box-shadow:4px 4px 4px  
4px rgb(230, 189, 180); -webkit-box-  
shadow:4px 4px 4px 4px rgb(230, 189, 180);  
box-shadow:4px 4px 4px 4px rgb(230, 189,  
180) }
```

Background

The CSS property to change the background color of an element to YUV 200.2330, -9.9749, 26.1057 is called "background". The background property can be set on classes, ids or directly on the HTML element.

```
.background, #background, body{  
background: rgb(230, 189, 180) }
```

If only the background color should be changed can be used:

```
.background{ background-color: rgb(230,  
189, 180) }
```

This example shows the color as background, it is applied via the CSS property "background".

To optimize and compress your CSS code, you can use our [online CSS compressor and optimizer](#) based on csstidy. If you want to create a linear or radial gradient as background or border, check our [CSS Gradient Generator](#).

Hey! You found this booklet interesting? Support Converting Colors with the new Membership Option!

The pro membership hides all ads, plus gives you double the colors in the color bucket, and more awesome pro features!

[Learn more, Memberships starting at \\$2.50/m!](#)

**Follow me
on Twitter!**

@ConvertingColor