

Converting Colors

YUV(200.2510, -17.3787,
20.8279)

Have a look what the booklet for
YUV(200.2510, -17.3787, 20.8279)
contains.

YUV(200.2510, -17.3787, 20.8279)	3
<i>Conversions</i>	4
<i>Details</i>	6
<i>Harmonies</i>	12
<i>Previews</i>	24
<i>Color Blindness Simulation</i>	28
<i>CSS Examples</i>	31

Color

**YUV(200.2510, -17.3787,
20.8279)**

Conversions

Conversions Part 1

Format	Color
Hex	E0C3A5
RGB	224, 195, 165
RGB Percent	88%, 76%, 65%
CMY	0.1216, 0.2353, 0.3529
CMYK	0.00, 0.13, 0.26, 0.12
HSL	31°, 49%, 76%
HSV	31°, 26%, 88%
XYZ	57.0471, 57.5941, 43.7074
YIQ	200.2510, 26.9140, -3.1820

Conversions

Conversions Part 2

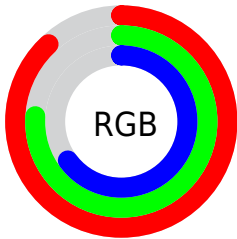
Format	Color
R _Y B	222, 224, 165
Decimal	14730149
CIE Lab	80.51, 5.76, 18.87
CIE LCh	81, 19.726, 73.021
Yxy	57.5941, 0.3603, 0.3637
Android (android.graphics.Color)	4292920229 (0xFFE0C3A5)
YUV	200.2510, -17.3787, 20.8279
Hunter-Lab	75.8908, 1.3696, 18.9770

Details

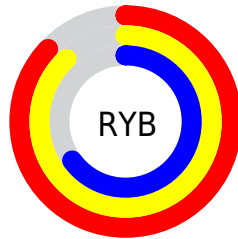
The YUV color $200.2510, -17.3787, 20.8279$ is a light color, and the websafe version is hex FFCC99 . A complement of this color would be $188.7490, 17.3787, -20.8279$, and the grayscale version is $200.0000, 0.0000, 0.0000$.

A 20% lighter version of the original color is $249.2490, -14.4198, 5.0436$, and $145.8810, -16.2103, 19.3984$ is the 20% darker color. If you saturate the color by 10%, you get $191.2860, -23.8050, 28.6902$, and if you desaturate by 10%, it is $209.2160, -10.9525, 12.9656$.

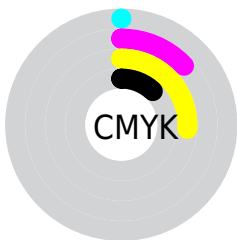
Distribution



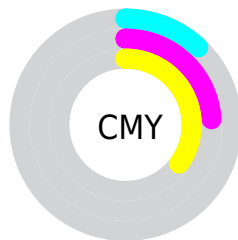
- Red (88%)
- Green (76%)
- Blue (65%)



- Red (87%)
- Yellow (88%)
- Blue (65%)



- Cyan (0%)
- Magenta (13%)
- Yellow (26%)
- Black (12%)



- Cyan (12%)
- Magenta (24%)
- Yellow (35%)

Brightness & Saturation Gradients

These gradients show how the YUV color 200.2510, -17.3787, 20.8279 changes by changing the brightness by 10 percent. The first figure shows a shift by +10% for each color and the second figure -10%.

Similar to the brightness gradients but the following saturation gradients show a change of the YUV color 200.2510, -17.3787, 20.8279 by changing the saturation by 10% instead.

■ 200.2510,
-17.3787, 20.8279

■ 200.2510,
-17.3787, 20.8279

255.0000, 0.0000,
0.0000

■ 173.0660,
-16.7945, 20.1131

■ 249.2490,
-14.4198, 5.0436

■ 145.8810,
-16.2103, 19.3984

■ 254.3160, -2.6208,
0.5999

■ 120.2830,
-15.9155, 18.1688

■ 95.2120, -14.8945,
17.3541

■ 71.7280, -14.1629,
16.0245

■ 48.9450, -13.2839,
14.0802

■ 27.5320, -13.5733,

13.5654

■ 5.0830, -2.5059,
10.4512

■ 0.0000, 0.0000,
0.0000

■ 200.2510,
-17.3787, 20.8279

■ 200.2510,
-17.3787, 20.8279

■ 191.2860,
-23.8050, 28.6902

■ 209.2160,
-10.9525, 12.9656

■ 182.2070,
-30.6681, 36.6525

■ 218.2950, -4.0894,
5.0033

■ 173.2420,
-37.0943, 44.5148

■ 227.2600, 2.3368,
-2.8590

■ 164.1630,
-43.9574, 52.4770

■ 236.3390, 9.1999,
-10.8213

■ 155.1980,
-50.3836, 60.3394

■ 242.7960, 6.0166,
-16.4841

■ 146.2330,
-56.8099, 68.2017

■ 245.7310, 4.5696,
-19.0581

■ 137.1540,
-63.6729, 76.1639

■ 133.8940,
-66.0097, 79.0230

Harmonies

Analogous

The Analogous color harmony consists of three colors that are next to each other on the color wheel.



202.0440, -13.3327, 29.7794



200.2510, -17.3787, 20.8279



198.2770, -16.8986, 6.7731

Triad

The Triadic color harmony groups three colors that are evenly spaced from another and form a triangle on the color wheel.



200.2510, -17.3787, 20.8279



192.9030, 6.9498, -35.8719



202.8560, 11.9030, 8.8963

Complementary

The Complementary color scheme is a pair of colors which are on the opposite of each other on the color wheel.



200.2510, -17.3787, 20.8279



188.7490, 17.3787, -20.8279

Split Complementary

Split-complementary colors differ from the complementary color scheme. The scheme consists of three colors, the original color and two neighbors of the complement color.



200.4130, 17.0514, -9.1322



200.2510, -17.3787, 20.8279



193.6670, 14.9542, -36.5420

Square

The Square scheme is like the rectangle color scheme, but the four colors are evenly spaced on the color wheel.



200.2510, -17.3787, 20.8279



194.0370, -2.9762, -25.4654



196.9440, 18.2686, -26.2609



203.1800, 3.8553, 23.5211

Rectangle

The Rectangle color scheme consists of four colors that form a rectangle on the color wheel.



200.2510, -17.3787, 20.8279



197.0090, -13.8084, -4.3929



196.9440, 18.2686, -26.2609



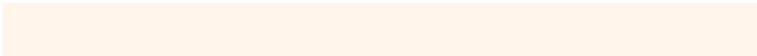
201.8060, 14.3926, 3.6781

Sweetspot

The Sweet Spot groups the original color and five complimentary colors.



200.2510, -17.3787, 20.8279



246.8500, -5.8420, 7.1476



186.0610, 4.4069, 33.2725



122.4090, -3.6526, 4.9033



0.0000, 0.0000, 0.0000



128.0000, 0.0000, 0.0000

Same Dimension

The Same Dimension uses a secret algorithm to generate beautiful new colors.



200.2510, -17.3787, 20.8279



222.1720, -24.2418, 28.7902



217.2740, -25.7711, 5.8987



107.8110, -3.3578, 3.6738



104.8670, -51.6994, 62.3836



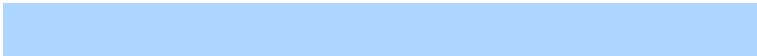
29.0270, -14.3103, 16.6393

Inverse Universe

The Inverse Universe completely reimagines the original color for something new.



188.7490, 17.3787, -20.8279



206.4150, 23.9524, -29.3050



171.7260, 25.7711, -5.8987



105.1890, 3.3578, -3.6738



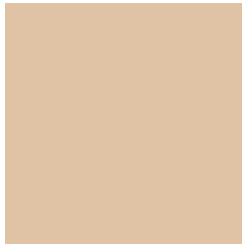
70.5460, 51.9888, -61.8688



19.5600, 14.0209, -17.1541

Previews

White Background



This preview shows how the YUV color 200.2510, -17.3787, 20.8279 looks on a white background.

Color Contrast Check

Large Text (above 18pt) WCAG AA × Fail

Any Text WCAG AA × Fail

Large Text (above 18pt) WCAG AAA × Fail

Any Text WCAG AAA × Fail

Black Background



This preview shows how the YUV color 200.2510, -17.3787, 20.8279 looks on a black background.

Color Contrast Check

Large Text (above 18pt) WCAG AA ✓ Pass

Any Text WCAG AA ✓ Pass

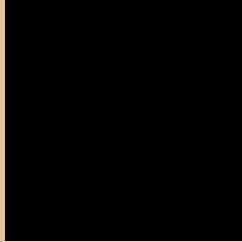
Large Text (above 18pt) WCAG AAA ✓ Pass

Any Text WCAG AAA ✓ Pass

If you want to check with other color combinations, try the [Color Contrast Checker](#).

YUV 200.2510, -17.3787, 20.8279

Background



This preview shows how black text looks on a background with the YUV color 200.2510, -17.3787, 20.8279.



This preview shows how white text looks on a background with the YUV color 200.2510, -17.3787, 20.8279.

Color Blindness Simulation

Color vision deficiency is a very complex topic, and I could not describe the different causes any better than Wikipedia does, so if you want to learn more, you should check out their [article about color blindness](#).

Dichromacy



Original Color

200.2510, -17.3787, 20.8279

Protanopia

198.9400, -15.7464, 10.5766

Deuteranopia

200.6970, -17.1056, 26.5757



Tritanopia

202.6700, 0.6557, 23.0914

Trichromacy



Original Color

200.2510, -17.3787, 20.8279

Protanomaly

199.7340, -16.6309, 14.2653

Deuteranomaly

200.3870, -16.9528, 24.2166

Tritanomaly

201.6500, -5.7434, 22.2320

Monochromacy



Original Color

200.2510, -17.3787, 20.8279

Achromatopsia

200.0000, 0.0000, 0.0000

Achromatomaly

200.0350, -6.4263, 7.8623

CSS Examples

Text

The CSS property to change the color of the text to YUV 200.2510, -17.3787, 20.8279 is called "color". The color property can be set on classes, ids or directly on the HTML element.

This example shows how text in the color `rgb(224, 195, 165)` looks like.

```
.text, #text, p{  
    color:rgb(224, 195, 165)  
}
```

If you want to add a text shadow in that color use the text-shadow property, you can generate a text shadow directly with our [CSS Text Shadow Generator](#).

Here you see how black text with a 4 pixel rgb(224, 195, 165) colored shadow looks like.

```
.shadow{ text-shadow: 4px 4px 2px rgb(224, 195, 165) }
```

Border

The CSS property to change the border of an element to YUV 200.2510, -17.3787, 20.8279 is called "border".

The border property can be set on classes, ids or directly on the HTML element.

This example shows the color as border, it can be applied via the CSS property "border" or "border-color".

```
.border, #border, table{ border:4px solid rgb(224, 195, 165) }
```


If only the border color should be changed use the property `border-color`.

```
.border{ border-color:rgb(224, 195, 165) }
```

If you want to add a box shadow in that color use:

Here you see how a box with a 4 pixel `rgb(224, 195, 165)` colored shadow looks like.

```
.boxshadow{ -moz-box-shadow:4px 4px 4px  
4px rgb(224, 195, 165); -webkit-box-  
shadow:4px 4px 4px 4px rgb(224, 195, 165);  
box-shadow:4px 4px 4px 4px rgb(224, 195,  
165) }
```

Background

The CSS property to change the background color of an element to YUV 200.2510, -17.3787, 20.8279 is called "background". The background property can be set on classes, ids or directly on the HTML element.

```
.background, #background, body{  
background: rgb(224, 195, 165) }
```

If only the background color should be changed can be used:

```
.background{ background-color: rgb(224,  
195, 165) }
```

This example shows the color as background, it is applied via the CSS property "background".

To optimize and compress your CSS code, you can use our [online CSS compressor and optimizer](#) based on csstidy. If you want to create a linear or radial gradient as background or border, check our [CSS Gradient Generator](#).

Hey! You found this booklet interesting? Support Converting Colors with the new Membership Option!

The pro membership hides all ads, plus gives you double the colors in the color bucket, and more awesome pro features!

[Learn more, Memberships starting at \\$2.50/m!](#)

**Follow me
on Twitter!**

@ConvertingColor