

Converting Colors

YUV(200.4130, -13.0216,
23.3168)

Have a look what the booklet for
YUV(200.4130, -13.0216, 23.3168)
contains.

YUV(200.4130, -13.0216, 23.3168)	3
<i>Conversions</i>	4
<i>Details</i>	6
<i>Harmonies</i>	12
<i>Previews</i>	24
<i>Color Blindness Simulation</i>	28
<i>CSS Examples</i>	31

Color

**YUV(200.4130, -13.0216,
23.3168)**

Conversions

Conversions Part 1

Format	Color
Hex	E3C0AE
RGB	227, 192, 174
RGB Percent	89%, 75%, 68%
CMY	0.1098, 0.2471, 0.3176
CMYK	0.00, 0.15, 0.23, 0.11
HSL	20°, 49%, 79%
HSV	20°, 23%, 89%
XYZ	58.1682, 57.0862, 47.9973
YIQ	200.4130, 26.6380, 1.8220

Conversions

Conversions Part 2

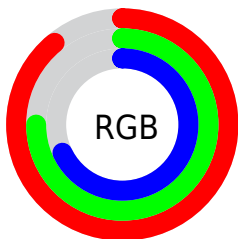
Format	Color
R _Y B	227, 201, 174
Decimal	14925998
CIE Lab	80.23, 9.73, 13.70
CIE LCh	80, 16.803, 54.609
Yxy	57.0862, 0.3563, 0.3497
Android (android.graphics.Color)	4293116078 (0xFFE3C0AE)
YUV	200.4130, -13.0216, 23.3168
Hunter-Lab	75.5554, 5.2007, 15.2242

Details

The YUV color $200.4130, -13.0216, 23.3168$ is a light color, and the websafe version is hex FFCCCC . A complement of this color would be $200.5870, 13.0216, -23.3168$, and the grayscale version is $201.0000, 0.0000, 0.0000$.

A 20% lighter version of the original color is $247.9270, -9.3310, 6.2030$, and $146.6300, -12.1426, 21.3725$ is the 20% darker color. If you saturate the color by 10%, you get $188.9860, -18.7271, 33.3383$, and if you desaturate by 10%, it is $211.8400, -7.3161, 13.2953$.

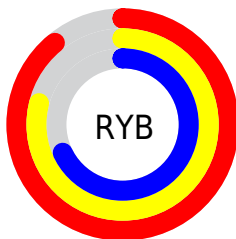
Distribution



Red (89%)

Green (75%)

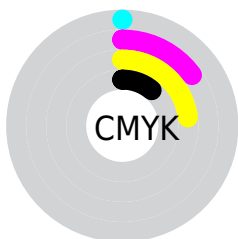
Blue (68%)



Red (89%)

Yellow (79%)

Blue (68%)

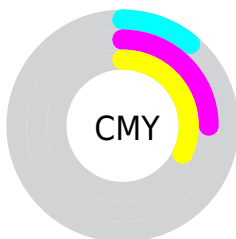


Cyan (0%)

Magenta (15%)

Yellow (23%)

Black (11%)



Cyan (11%)

Magenta (25%)

Yellow (32%)

Brightness & Saturation Gradients

These gradients show how the YUV color 200.4130, -13.0216, 23.3168 changes by changing the brightness by 10 percent. The first figure shows a shift by +10% for each color and the second figure -10%.

Similar to the brightness gradients but the following saturation gradients show a change of the YUV color 200.4130, -13.0216, 23.3168 by changing the saturation by 10% instead.

■ 200.4130,
-13.0216, 23.3168

■ 200.4130,
-13.0216, 23.3168

255.0000, 0.0000,
0.0000

■ 173.1140,
-12.8742, 22.7020

■ 247.9270, -9.3310,
6.2030

■ 146.6300,
-12.1426, 21.3725

■ 120.4450,
-11.5584, 20.6577

■ 95.8470, -11.2636,
19.4282

■ 71.3630, -10.5320,
18.0986

■ 48.8790, -9.8003,
16.7691

■ 26.8250, -11.2527,

15.9395

■ 6.5780, -3.2430,
13.5251

■ 0.0000, 0.0000,
0.0000

■ 200.4130,
-13.0216, 23.3168

■ 200.4130,
-13.0216, 23.3168

■ 188.9860,
-18.7271, 33.3383

■ 211.8400, -7.3161,
13.2953

■ 177.6730,
-23.9958, 43.2598

■ 223.1530, -2.0474,
3.3738

■ 166.2460,
-29.7013, 53.2813

■ 234.5800, 3.6581,
-6.6477

■ 154.8190,
-35.4068, 63.3027

■ 244.8670, 4.9956,
-15.6694

■ 143.3920,
-41.1123, 73.3242

■ 246.6280, 4.1274,
-17.2138

■ 132.0790,
-46.3809, 83.2457

■ 120.6520,
-52.0864, 93.2672

■ 113.0720,
-55.7445, 99.9149

Harmonies

Analogous

The Analogous color harmony consists of three colors that are next to each other on the color wheel.



201.6290, -7.2121, 26.6354



200.4130, -13.0216, 23.3168



198.7770, -15.1731, 13.3506

Triad

The Triadic color harmony groups three colors that are evenly spaced from another and form a triangle on the color wheel.



200.4130, -13.0216, 23.3168



193.6610, 0.6601, -25.1357



200.1320, 13.2459, -1.8698

Complementary

The Complementary color scheme is a pair of colors which are on the opposite of each other on the color wheel.



200.4130, -13.0216, 23.3168



200.5870, 13.0216, -23.3168

Split Complementary

Split-complementary colors differ from the complementary color scheme. The scheme consists of three colors, the original color and two neighbors of the complement color.



197.4290, 16.0575, -17.0392



200.4130, -13.0216, 23.3168



193.3920, 8.6807, -31.0388

Square

The Square scheme is like the rectangle color scheme, but the four colors are evenly spaced on the color wheel.



200.4130, -13.0216, 23.3168



195.2620, -7.5242, -13.3848



195.1950, 14.2009, -28.2350



201.7380, 7.5242, 13.3848

Rectangle

The Rectangle color scheme consists of four colors that form a rectangle on the color wheel.



200.4130, -13.0216, 23.3168



197.3630, -13.9830, 4.9436



195.1950, 14.2009, -28.2350



199.7400, 14.4252, -6.7880

Sweetspot

The Sweet Spot groups the original color and five complimentary colors.



200.4130, -13.0216, 23.3168



245.9040, -4.3897, 7.9772



193.8370, 7.4754, 29.0840



122.6370, -2.7790, 4.7034



0.0000, 0.0000, 0.0000



128.0000, 0.0000, 0.0000

Same Dimension

The Same Dimension uses a secret algorithm to generate beautiful new colors.



200.4130, -13.0216, 23.3168



219.3170, -17.4113, 31.2940



215.6750, -20.5458, 9.9320



108.9360, -2.9264, 5.3181



89.3280, -44.0387, 78.6423



25.2280, -12.4374, 22.6020

Inverse Universe

The Inverse Universe completely reimagines the original color for something new.



200.5870, 13.0216, -23.3168



219.6830, 17.4113, -31.2940



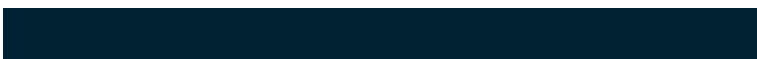
185.3250, 20.5458, -9.9320



109.0640, 2.9264, -5.3181



89.6720, 44.0387, -78.6423



25.7720, 12.4374, -22.6020

Previews

White Background



This preview shows how the YUV color 200.4130, -13.0216, 23.3168 looks on a white background.

Color Contrast Check

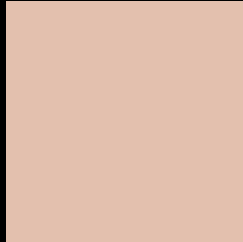
Large Text (above 18pt) WCAG AA × Fail

Any Text WCAG AA × Fail

Large Text (above 18pt) WCAG AAA × Fail

Any Text WCAG AAA × Fail

Black Background



This preview shows how the YUV color 200.4130, -13.0216, 23.3168 looks on a black background.

Color Contrast Check

Large Text (above 18pt) WCAG AA ✓ Pass

Any Text WCAG AA ✓ Pass

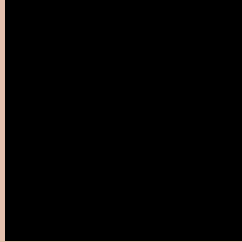
Large Text (above 18pt) WCAG AAA ✓ Pass

Any Text WCAG AAA ✓ Pass

If you want to check with other color combinations, try the [Color Contrast Checker](#).

YUV 200.4130, -13.0216, 23.3168

Background



This preview shows how black text looks on a background with the YUV color 200.4130, -13.0216, 23.3168.



This preview shows how white text looks on a background with the YUV color 200.4130, -13.0216, 23.3168.

Color Blindness Simulation

Color vision deficiency is a very complex topic, and I could not describe the different causes any better than Wikipedia does, so if you want to learn more, you should check out their [article about color blindness](#).

Dichromacy



Original Color

200.4130, -13.0216, 23.3168

Protanopia

199.1830, -10.9362, 7.7325

Deuteranopia

200.4130, -13.0216, 23.3168



Tritanopia

202.1540, -0.0759, 24.4209

Trichromacy



Original Color

200.4130, -13.0216, 23.3168

Protanomaly

199.4010, -11.5367, 13.6803

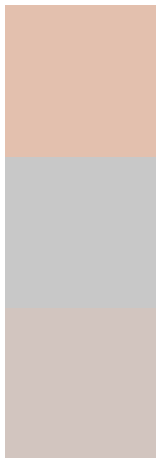
Deuteranomaly

200.4130, -13.0216, 23.3168

Tritanomaly

201.3020, -4.5859, 24.2911

Monochromacy



Original Color

200.4130, -13.0216, 23.3168

Achromatopsia

200.0000, 0.0000, 0.0000

Achromatomaly

200.2030, -4.5371, 8.5920

CSS Examples

Text

The CSS property to change the color of the text to YUV 200.4130, -13.0216, 23.3168 is called "color". The color property can be set on classes, ids or directly on the HTML element.

This example shows how text in the color `rgb(227, 192, 174)` looks like.

```
.text, #text, p{  
  color:rgb(227, 192, 174)  
}
```

If you want to add a text shadow in that color use the text-shadow property, you can generate a text shadow directly with our [CSS Text Shadow Generator](#).

Here you see how black text with a 4 pixel rgb(227, 192, 174) colored shadow looks like.

```
.shadow{ text-shadow: 4px 4px 2px rgb(227, 192, 174) }
```

Border

The CSS property to change the border of an element to YUV 200.4130, -13.0216, 23.3168 is called "border".

The border property can be set on classes, ids or directly on the HTML element.

This example shows the color as border, it can be applied via the CSS property "border" or "border-color".

```
.border, #border, table{ border:4px solid rgb(227, 192, 174) }
```


If only the border color should be changed use the property border-color.

```
.border{ border-color:rgb(227, 192, 174) }
```

If you want to add a box shadow in that color use:

Here you see how a box with a 4 pixel rgb(227, 192, 174) colored shadow looks like.

```
.boxshadow{ -moz-box-shadow:4px 4px 4px  
4px rgb(227, 192, 174); -webkit-box-  
shadow:4px 4px 4px 4px rgb(227, 192, 174);  
box-shadow:4px 4px 4px 4px rgb(227, 192,  
174) }
```

Background

The CSS property to change the background color of an element to YUV 200.4130, -13.0216, 23.3168 is called "background". The background property can be set on classes, ids or directly on the HTML element.

```
.background, #background, body{  
background: rgb(227, 192, 174) }
```

If only the background color should be changed can be used:

```
.background{ background-color: rgb(227,  
192, 174) }
```

This example shows the color as background, it is applied via the CSS property "background".

To optimize and compress your CSS code, you can use our [online CSS compressor and optimizer](#) based on csstidy. If you want to create a linear or radial gradient as background or border, check our [CSS Gradient Generator](#).

Hey! You found this booklet interesting? Support Converting Colors with the new Membership Option!

The pro membership hides all ads, plus gives you double the colors in the color bucket, and more awesome pro features!

[Learn more, Memberships starting at \\$2.50/m!](#)

**Follow me
on Twitter!**

@ConvertingColor