

Converting Colors

YUV(200.8510, -7.3215,
15.0397)

Have a look what the booklet for
YUV(200.8510, -7.3215, 15.0397)
contains.

YUV(200.8510, -7.3215, 15.0397)	3
<i>Conversions</i>	4
<i>Details</i>	6
<i>Harmonies</i>	12
<i>Previews</i>	24
<i>Color Blindness Simulation</i>	28
<i>CSS Examples</i>	31

Color

**YUV(200.8510, -7.3215,
15.0397)**

Conversions

Conversions Part 1

Format	Color
Hex	DAC3BA
RGB	218, 195, 186
RGB Percent	85%, 76%, 73%
CMY	0.1451, 0.2353, 0.2706
CMYK	0.00, 0.11, 0.15, 0.15
HSL	17°, 30%, 79%
HSV	17°, 15%, 85%
XYZ	57.2915, 57.4808, 54.5297
YIQ	200.8510, 16.5970, 2.0770

Conversions

Conversions Part 2

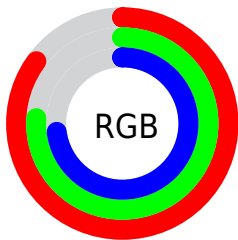
Format	Color
R _Y B	218, 199, 186
Decimal	14336954
CIE Lab	80.45, 6.63, 7.47
CIE LCh	80, 9.988, 48.374
Yxy	57.4808, 0.3384, 0.3395
Android (android.graphics.Color)	4292527034 (0xFFDAC3BA)
YUV	200.8510, -7.3215, 15.0397
Hunter-Lab	75.8161, 2.2078, 10.4277

Details

The YUV color $200.8510, -7.3215, 15.0397$ is a light color, and the websafe version is hex `CCCCCC`. A complement of this color would be $203.1490, 7.3215, -15.0397$, and the grayscale version is $201.0000, 0.0000, 0.0000$.

A 20% lighter version of the original color is $251.7570, -4.8102, 2.8441$, and $146.6660, -6.7373, 14.3249$ is the 20% darker color. If you saturate the color by 10%, you get $188.9510, -12.3008, 25.4760$, and if you desaturate by 10%, it is $212.7510, -2.3422, 4.6034$.

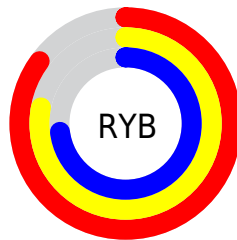
Distribution



Red (85%)

Green (76%)

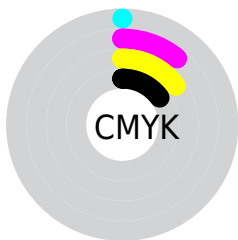
Blue (73%)



Red (85%)

Yellow (78%)

Blue (73%)

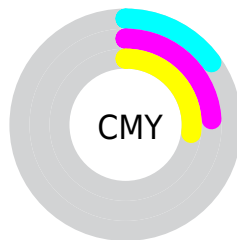


Cyan (0%)

Magenta (11%)

Yellow (15%)

Black (15%)



Cyan (15%)


Magenta (24%)


Yellow (27%)

Brightness & Saturation Gradients


These gradients show how the YUV color 200.8510, -7.3215, 15.0397 changes by changing the brightness by 10 percent. The first figure shows a shift by +10% for each color and the second figure -10%.


Similar to the brightness gradients but the following saturation gradients show a change of the YUV color 200.8510, -7.3215, 15.0397 by changing the saturation by 10% instead.

 200.8510, -7.3215,
15.0397

 200.8510, -7.3215,
15.0397


255.0000, 0.0000,
0.0000

 173.5520, -7.1741,
14.4249


 251.7570, -4.8102,
2.8441

 146.6660, -6.7373,
14.3249

 121.0680, -6.4425,
13.0954

 96.0680, -6.4425,
13.0954

 72.4700, -6.1477,
11.8658

 50.2850, -5.5635,
11.1511

 28.6870, -5.2687,

9.9215

■ 5.3820, -2.6533,
11.0660

■ 0.0000, 0.0000,
0.0000

■ 200.8510, -7.3215,
15.0397

■ 200.8510, -7.3215,
15.0397

■ 188.9510,
-12.3008, 25.4760

■ 212.7510, -2.3422,
4.6034

■ 177.6380,
-17.5695, 35.3975

■ 224.0640, 2.9264,
-5.3181

■ 165.8520,
-22.1120, 45.7338

■ 235.8500, 7.4690,
-15.6544

■ 153.9520,
-27.0913, 56.1701

■ 243.9370, 5.4541,
-22.7467

■ 142.6390,
-32.3600, 66.0916

■ 130.7390,
-37.3393, 76.5279

■ 118.8390,
-42.3186, 86.9642

■ 107.6400,
-47.1505, 96.7857

■ 100.9890,
-49.7876, 102.6186

Harmonies

Analogous

The Analogous color harmony consists of three colors that are next to each other on the color wheel.



201.1870, -3.5432, 16.4990



200.8510, -7.3215, 15.0397



200.0630, -8.9051, 9.5917

Triad

The Triadic color harmony groups three colors that are evenly spaced from another and form a triangle on the color wheel.



200.8510, -7.3215, 15.0397



196.7980, -0.3934, -13.8548



199.8670, 8.4466, -2.5144

Complementary

The Complementary color scheme is a pair of colors which are on the opposite of each other on the color wheel.



200.8510, -7.3215, 15.0397



203.1490, 7.3215, -15.0397

Split Complementary

Split-complementary colors differ from the complementary color scheme. The scheme consists of three colors, the original color and two neighbors of the complement color.



199.0400, 9.3473, -11.4361



200.8510, -7.3215, 15.0397



196.6280, 4.1274, -17.2138

Square

The Square scheme is like the rectangle color scheme, but the four colors are evenly spaced on the color wheel.



200.8510, -7.3215, 15.0397



197.2890, -5.0725, -6.3925



197.2520, 7.7638, -16.8840



201.4120, 5.2199, 5.7777

Rectangle

The Rectangle color scheme consists of four colors that form a rectangle on the color wheel.



200.8510, -7.3215, 15.0397



199.3290, -9.0362, 4.9735



197.2520, 7.7638, -16.8840



199.3720, 9.1836, -5.5882

Sweetspot

The Sweet Spot groups the original color and five complimentary colors.



200.8510, -7.3215, 15.0397



249.7510, -2.3422, 4.6034



198.1900, 5.3293, 17.3734



124.2670, -1.6106, 3.2738



0.0000, 0.0000, 0.0000



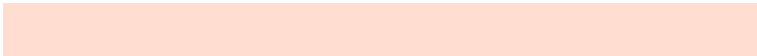
128.0000, 0.0000, 0.0000

Same Dimension

The Same Dimension uses a secret algorithm to generate beautiful new colors.



200.8510, -7.3215, 15.0397



230.3850, -10.5428, 21.5874



210.2430, -11.9518, 6.8029



104.0500, -2.4896, 5.2182



80.4900, -39.6816, 81.1313



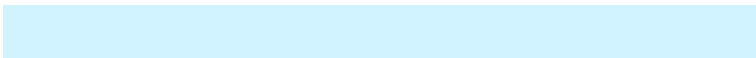
21.3850, -10.5428, 21.5874

Inverse Universe

The Inverse Universe completely reimagines the original color for something new.



203.1490, 7.3215, -15.0397



233.6150, 10.5428, -21.5874



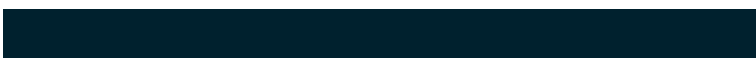
193.7570, 11.9518, -6.8029



104.9500, 2.4896, -5.2182



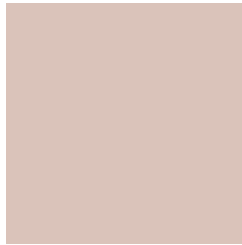
93.0970, 39.3922, -81.6461



24.6150, 10.5428, -21.5874

Previews

White Background



This preview shows how the YUV color 200.8510, -7.3215, 15.0397 looks on a white background.

Color Contrast Check

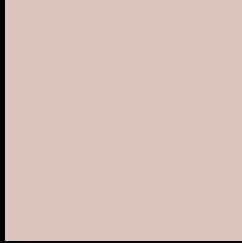
Large Text (above 18pt) WCAG AA × Fail

Any Text WCAG AA × Fail

Large Text (above 18pt) WCAG AAA × Fail

Any Text WCAG AAA × Fail

Black Background



This preview shows how the YUV color 200.8510, -7.3215, 15.0397 looks on a black background.

Color Contrast Check

Large Text (above 18pt) WCAG AA ✓ Pass

Any Text WCAG AA ✓ Pass

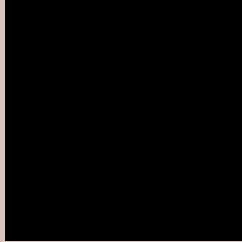
Large Text (above 18pt) WCAG AAA ✓ Pass

Any Text WCAG AAA ✓ Pass

If you want to check with other color combinations, try the [Color Contrast Checker](#).

YUV 200.8510, -7.3215, 15.0397

Background



This preview shows how black text looks on a background with the YUV color 200.8510, -7.3215, 15.0397.



This preview shows how white text looks on a background with the YUV color 200.8510, -7.3215,

Color Blindness Simulation

Color vision deficiency is a very complex topic, and I could not describe the different causes any better than Wikipedia does, so if you want to learn more, you should check out their [article about color blindness](#).

Dichromacy



Original Color

200.8510, -7.3215, 15.0397

Protanopia

199.8390, -5.8366, 5.4032

Deuteranopia

201.4710, -7.6272, 19.7579



Tritanopia

202.3810, 2.2772, 16.3289

Trichromacy



Original Color

200.8510, -7.3215, 15.0397

Protanomaly

200.3340, -6.5737, 8.4771

Deuteranomaly

201.4600, -7.6218, 18.0136

Tritanomaly

201.7570, -1.3592, 15.9991

Monochromacy



Original Color

200.8510, -7.3215, 15.0397

Achromatopsia

201.0000, 0.0000, 0.0000

Achromatomaly

201.0500, -2.4896, 5.2182

CSS Examples

Text

The CSS property to change the color of the text to YUV 200.8510, -7.3215, 15.0397 is called "color". The color property can be set on classes, ids or directly on the HTML element.

This example shows how text in the color `rgb(218, 195, 186)` looks like.

```
.text, #text, p{  
    color:rgb(218, 195, 186)  
}
```

If you want to add a text shadow in that color use the text-shadow property, you can generate a text shadow directly with our [CSS Text Shadow Generator](#).

Here you see how black text with a 4 pixel rgb(218, 195, 186) colored shadow looks like.

```
.shadow{ text-shadow: 4px 4px 2px rgb(218, 195, 186) }
```

Border

The CSS property to change the border of an element to YUV 200.8510, -7.3215, 15.0397 is called "border". The border property can be set on classes, ids or directly on the HTML element.

This example shows the color as border, it can be applied via the CSS property "border" or "border-color".

```
.border, #border, table{ border:4px solid rgb(218, 195, 186) }
```


If only the border color should be changed use the property `border-color`.

```
.border{ border-color:rgb(218, 195, 186) }
```

If you want to add a box shadow in that color use:

Here you see how a box with a 4 pixel `rgb(218, 195, 186)` colored shadow looks like.

```
.boxshadow{ -moz-box-shadow:4px 4px 4px  
4px rgb(218, 195, 186); -webkit-box-  
shadow:4px 4px 4px 4px rgb(218, 195, 186);  
box-shadow:4px 4px 4px 4px rgb(218, 195,  
186) }
```

Background

The CSS property to change the background color of an element to YUV 200.8510, -7.3215, 15.0397 is called "background". The background property can be set on classes, ids or directly on the HTML element.

```
.background, #background, body{  
background: rgb(218, 195, 186) }
```

If only the background color should be changed can be used:

```
.background{ background-color: rgb(218,  
195, 186) }
```

This example shows the color as background, it is applied via the CSS property "background".

To optimize and compress your CSS code, you can use our [online CSS compressor and optimizer](#) based on csstidy. If you want to create a linear or radial gradient as background or border, check our [CSS Gradient Generator](#).

Hey! You found this booklet interesting? Support Converting Colors with the new Membership Option!

The pro membership hides all ads, plus gives you double the colors in the color bucket, and more awesome pro features!

[Learn more, Memberships starting at \\$2.50/m!](#)

**Follow me
on Twitter!**

@ConvertingColor