

Converting Colors

YUV(200.8540, -15.2110,
25.5610)

Have a look what the booklet for
YUV(200.8540, -15.2110, 25.5610)
contains.

YUV(200.8540, -15.2110, 25.5610)	3
<i>Conversions</i>	4
<i>Details</i>	6
<i>Harmonies</i>	12
<i>Previews</i>	24
<i>Color Blindness Simulation</i>	28
<i>CSS Examples</i>	31

Color

**YUV(200.8540, -15.2110,
25.5610)**

Conversions

Conversions Part 1

Format	Color
Hex	E6C0AA
RGB	230, 192, 170
RGB Percent	90%, 75%, 67%
CMY	0.0980, 0.2471, 0.3333
CMYK	0.00, 0.17, 0.26, 0.10
HSL	22°, 55%, 78%
HSV	22°, 26%, 90%
XYZ	58.7385, 57.4245, 46.0184
YIQ	200.8540, 29.7100, 1.2140

Conversions

Conversions Part 2

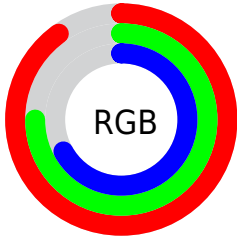
Format	Color
R _Y B	230, 205, 170
Decimal	15122602
CIE Lab	80.42, 10.30, 16.15
CIE LCh	80, 19.151, 57.475
Yxy	57.4245, 0.3622, 0.3541
Android (android.graphics.Color)	4293312682 (0xFFE6C0AA)
YUV	200.8540, -15.2110, 25.5610
Hunter-Lab	75.7790, 5.7472, 17.0402

Details

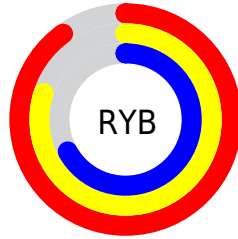
The YUV color $200.8540, -15.2110, 25.5610$ is a light color, and the websafe version is hex FFCCCC . A complement of this color would be $199.1460, 15.2110, -25.5610$, and the grayscale version is $201.0000, 0.0000, 0.0000$.

A 20% lighter version of the original color is $247.4710, -11.0782, 6.6029$, and $147.0710, -14.3320, 23.6167$ is the 20% darker color. If you saturate the color by 10%, you get $189.4270, -20.9165, 35.5825$, and if you desaturate by 10%, it is $212.2810, -9.5055, 15.5396$.

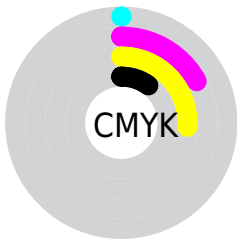
Distribution



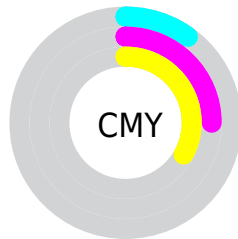
- Red (90%)
- Green (75%)
- Blue (67%)



- Red (90%)
- Yellow (80%)
- Blue (67%)



- Cyan (0%)
- Magenta (17%)
- Yellow (26%)
- Black (10%)



- Cyan (10%)
- Magenta (25%)
- Yellow (33%)

Brightness & Saturation Gradients

These gradients show how the YUV color 200.8540, -15.2110, 25.5610 changes by changing the brightness by 10 percent. The first figure shows a shift by +10% for each color and the second figure -10%.

Similar to the brightness gradients but the following saturation gradients show a change of the YUV color 200.8540, -15.2110, 25.5610 by changing the saturation by 10% instead.

■ 200.8540,
-15.2110, 25.5610

■ 200.8540,
-15.2110, 25.5610

255.0000, 0.0000,
0.0000

■ 173.5550,
-15.0636, 24.9463

■ 247.4710,
-11.0782, 6.6029

■ 147.0710,
-14.3320, 23.6167

254.8860, -0.4368,
0.1000

■ 120.8860,
-13.7478, 22.9020

■ 95.9890, -13.3056,
21.0576

■ 71.9180, -12.2846,
20.2429

■ 49.1350, -11.4056,
18.2986

■ 26.9670, -13.2947,

17.5689

■ 7.1760, -3.5378,
14.7546

■ 0.0000, 0.0000,
0.0000

■ 200.8540,
-15.2110, 25.5610

■ 200.8540,
-15.2110, 25.5610

■ 189.4270,
-20.9165, 35.5825

■ 212.2810, -9.5055,
15.5396

■ 178.5870,
-26.9114, 45.0892

■ 223.1210, -3.5107,
6.0329

■ 167.1600,
-32.6169, 55.1107

■ 234.5480, 2.1948,
-3.9886

■ 156.3200,
-38.6118, 64.6174

■ 244.5900, 5.1321,
-12.7954

■ 144.8930,
-44.3172, 74.6388

■ 247.5250, 3.6852,
-15.3694

■ 134.0530,
-50.3121, 84.1455

■ 122.6260,
-56.0176, 94.1670

■ 118.0780,
-58.2125, 98.1556

Harmonies

Analogous

The Analogous color harmony consists of three colors that are next to each other on the color wheel.



202.1950, -8.9701, 30.5240



200.8540, -15.2110, 25.5610



199.2070, -17.3571, 13.8505

Triad

The Triadic color harmony groups three colors that are evenly spaced from another and form a triangle on the color wheel.



200.8540, -15.2110, 25.5610



193.2690, 1.8394, -30.0539



200.8980, 14.8403, 0.0895

Complementary

The Complementary color scheme is a pair of colors which are on the opposite of each other on the color wheel.



200.8540, -15.2110, 25.5610



199.1460, 15.2110, -25.5610

Split Complementary

Split-complementary colors differ from the complementary color scheme. The scheme consists of three colors, the original color and two neighbors of the complement color.



198.5860, 17.9521, -18.0539



200.8540, -15.2110, 25.5610



192.6410, 11.0230, -35.6422

Square

The Square scheme is like the rectangle color scheme, but the four colors are evenly spaced on the color wheel.



200.8540, -15.2110, 25.5610



194.9410, -7.3659, -17.4883



195.1560, 16.6851, -31.7088



202.8740, 7.9501, 16.7735

Rectangle

The Rectangle color scheme consists of four colors that form a rectangle on the color wheel.



200.8540, -15.2110, 25.5610



197.7820, -16.1615, 3.6992



195.1560, 16.6851, -31.7088



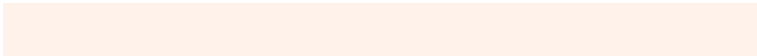
200.4950, 16.0250, -6.5731

Sweetspot

The Sweet Spot groups the original color and five complimentary colors.



200.8540, -15.2110, 25.5610



245.0890, -4.9739, 8.6919



192.2720, 7.7539, 33.0875



121.2350, -3.0739, 5.9329



0.0000, 0.0000, 0.0000



128.0000, 0.0000, 0.0000

Same Dimension

The Same Dimension uses a secret algorithm to generate beautiful new colors.



200.8540, -15.2110, 25.5610



216.6440, -20.0375, 33.6382



218.4640, -23.8928, 10.1171



108.9360, -2.9264, 5.3181



91.6760, -45.1963, 76.5831



26.4020, -13.0162, 21.5724

Inverse Universe

The Inverse Universe completely reimagines the original color for something new.



199.1460, 15.2110, -25.5610



214.3560, 20.0375, -33.6382



181.5360, 23.8928, -10.1171



109.0640, 2.9264, -5.3181



86.7370, 45.4857, -76.0683



24.5980, 13.0162, -21.5724

Previews

White Background



This preview shows how the YUV color 200.8540, -15.2110, 25.5610 looks on a white background.

Color Contrast Check

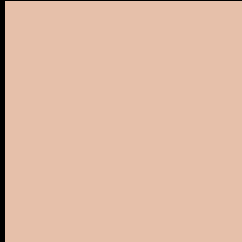
Large Text (above 18pt) WCAG AA × Fail

Any Text WCAG AA × Fail

Large Text (above 18pt) WCAG AAA × Fail

Any Text WCAG AAA × Fail

Black Background



This preview shows how the YUV color 200.8540, -15.2110, 25.5610 looks on a black background.

Color Contrast Check

Large Text (above 18pt) WCAG AA ✓ Pass

Any Text WCAG AA ✓ Pass

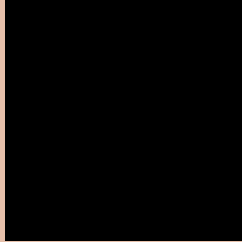
Large Text (above 18pt) WCAG AAA ✓ Pass

Any Text WCAG AAA ✓ Pass

If you want to check with other color combinations, try the [Color Contrast Checker](#).

YUV 200.8540, -15.2110, 25.5610

Background



This preview shows how black text looks on a background with the YUV color 200.8540, -15.2110, 25.5610.



This preview shows how white text looks on a background with the YUV color 200.8540, -15.2110, 25.5610.

25.5610.

Color Blindness Simulation

Color vision deficiency is a very complex topic, and I could not describe the different causes any better than Wikipedia does, so if you want to learn more, you should check out their [article about color blindness](#).

Dichromacy



Original Color

200.8540, -15.2110, 25.5610

Protanopia

199.1400, -12.3940, 8.6472

Deuteranopia

200.8540, -15.2110, 25.5610



Tritanopia

202.7630, -0.3762, 27.3948

Trichromacy



Original Color

200.8540, -15.2110, 25.5610

Protanomaly

199.6570, -13.1419, 15.2098

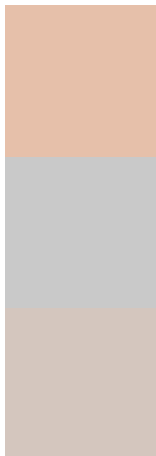
Deuteranomaly

200.8540, -15.2110, 25.5610

Tritanomaly

202.2700, -6.0491, 26.9502

Monochromacy



Original Color

200.8540, -15.2110, 25.5610

Achromatopsia

201.0000, 0.0000, 0.0000

Achromatomaly

201.2740, -5.5581, 9.4067

CSS Examples

Text

The CSS property to change the color of the text to YUV 200.8540, -15.2110, 25.5610 is called "color". The color property can be set on classes, ids or directly on the HTML element.

This example shows how text in the color `rgb(230, 192, 170)` looks like.

```
.text, #text, p{  
    color:rgb(230, 192, 170)  
}
```

If you want to add a text shadow in that color use the text-shadow property, you can generate a text shadow directly with our [CSS Text Shadow Generator](#).

Here you see how black text with a 4 pixel rgb(230, 192, 170) colored shadow looks like.

```
.shadow{ text-shadow: 4px 4px 2px rgb(230, 192, 170) }
```

Border

The CSS property to change the border of an element to YUV 200.8540, -15.2110, 25.5610 is called "border".

The border property can be set on classes, ids or directly on the HTML element.

This example shows the color as border, it can be applied via the CSS property "border" or "border-color".

```
.border, #border, table{ border:4px solid rgb(230, 192, 170) }
```


If only the border color should be changed use the property border-color.

```
.border{ border-color:rgb(230, 192, 170) }
```

If you want to add a box shadow in that color use:

Here you see how a box with a 4 pixel rgb(230, 192, 170) colored shadow looks like.

```
.boxshadow{ -moz-box-shadow:4px 4px 4px  
4px rgb(230, 192, 170); -webkit-box-  
shadow:4px 4px 4px 4px rgb(230, 192, 170);  
box-shadow:4px 4px 4px 4px rgb(230, 192,  
170) }
```

Background

The CSS property to change the background color of an element to YUV 200.8540, -15.2110, 25.5610 is called "background". The background property can be set on classes, ids or directly on the HTML element.

```
.background, #background, body{  
background: rgb(230, 192, 170) }
```

If only the background color should be changed can be used:

```
.background{ background-color: rgb(230,  
192, 170) }
```

This example shows the color as background, it is applied via the CSS property "background".

To optimize and compress your CSS code, you can use our [online CSS compressor and optimizer](#) based on csstidy. If you want to create a linear or radial gradient as background or border, check our [CSS Gradient Generator](#).

Hey! You found this booklet interesting? Support Converting Colors with the new Membership Option!

The pro membership hides all ads, plus gives you double the colors in the color bucket, and more awesome pro features!

[Learn more, Memberships starting at \\$2.50/m!](#)

**Follow me
on Twitter!**

@ConvertingColor