

Converting Colors

YUV(200.8700, -12.7539,
30.8090)

Have a look what the booklet for
YUV(200.8700, -12.7539, 30.8090)
contains.

YUV(200.8700, -12.7539, 30.8090)	3
<i>Conversions</i>	4
<i>Details</i>	6
<i>Harmonies</i>	12
<i>Previews</i>	24
<i>Color Blindness Simulation</i>	28
<i>CSS Examples</i>	31

Color

**YUV(200.8700, -12.7539,
30.8090)**

Conversions

Conversions Part 1

Format	Color
Hex	ECBCAF
RGB	236, 188, 175
RGB Percent	93%, 74%, 69%
CMY	0.0745, 0.2627, 0.3137
CMYK	0.00, 0.20, 0.26, 0.07
HSL	13°, 62%, 81%
HSV	13°, 26%, 93%
XYZ	60.3132, 56.8945, 48.3603
YIQ	200.8700, 32.7810, 6.1330

Conversions

Conversions Part 2

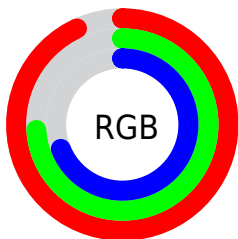
Format	Color
R _Y B	236, 192, 175
Decimal	15514799
CIE Lab	80.12, 15.35, 13.13
CIE LCh	80, 20.201, 40.539
Yxy	56.8945, 0.3643, 0.3436
Android (android.graphics.Color)	4293704879 (0xFFECBCAF)
YUV	200.8700, -12.7539, 30.8090
Hunter-Lab	75.4284, 10.7303, 14.7866

Details

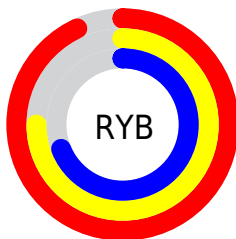
The YUV color $200.8700, -12.7539, 30.8090$ is a light color, and the websafe version is hex FFCCCC . A complement of this color would be $210.1300, 12.7539, -30.8090$, and the grayscale version is $201.0000, 0.0000, 0.0000$.

A 20% lighter version of the original color is $245.8070, -7.2999, 8.0623$, and $146.7880, -11.7275, 28.2499$ is the 20% darker color. If you saturate the color by 10%, you get $186.9810, -17.7386, 42.9897$, and if you desaturate by 10%, it is $214.7590, -7.7692, 18.6284$.

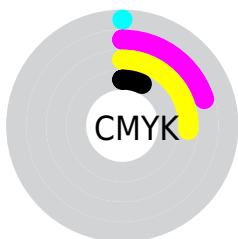
Distribution



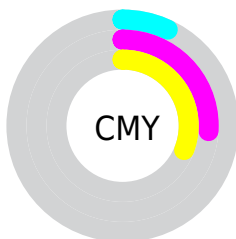
- Red (93%)
- Green (74%)
- Blue (69%)



- Red (93%)
- Yellow (75%)
- Blue (69%)



- Cyan (0%)
- Magenta (20%)
- Yellow (26%)
- Black (7%)



- Cyan (7%)
- Magenta (26%)
- Yellow (31%)

Brightness & Saturation Gradients

These gradients show how the YUV color 200.8700, -12.7539, 30.8090 changes by changing the brightness by 10 percent. The first figure shows a shift by +10% for each color and the second figure -10%.

Similar to the brightness gradients but the following saturation gradients show a change of the YUV color 200.8700, -12.7539, 30.8090 by changing the saturation by 10% instead.

■ 200.8700,
-12.7539, 30.8090

■ 200.8700,
-12.7539, 30.8090

255.0000, 0.0000,
0.0000

■ 173.2720,
-12.4591, 29.5795

■ 245.8070, -7.2999,
8.0623

■ 146.7880,
-11.7275, 28.2499

■ 120.6030,
-11.1433, 27.5352

■ 95.7060, -10.7011,
25.6908

■ 71.2220, -9.9694,
24.3613

■ 48.4390, -9.0904,
22.4170

■ 26.4990, -10.1060,

21.4874

■ 8.7850, -3.8380,
17.7286

■ 0.0000, 0.0000,
0.0000

■ 200.8700,
-12.7539, 30.8090

■ 200.8700,
-12.7539, 30.8090

■ 186.9810,
-17.7386, 42.9897

■ 214.7590, -7.7692,
18.6284

■ 173.7930,
-22.5759, 54.5555

■ 227.9470, -2.9319,
7.0625

■ 159.9040,
-27.5607, 66.7362

■ 241.8360, 2.0529,
-5.1182

■ 146.7160,
-32.3980, 78.3021

■ 249.3190, 2.8007,
-11.6808

■ 132.8270,
-37.3827, 90.4827

■ 119.5250,
-42.6568, 102.1486

■ 105.7500,
-47.2047, 114.2292

■ 99.9140, -49.2576,
119.3474

Harmonies

Analogous

The Analogous color harmony consists of three colors that are next to each other on the color wheel.



202.3460, -4.6076, 31.2686



200.8700, -12.7539, 30.8090



199.2620, -17.3842, 22.5722

Triad

The Triadic color harmony groups three colors that are evenly spaced from another and form a triangle on the color wheel.



200.8700, -12.7539, 30.8090



193.2220, -3.5604, -24.7507



198.6300, 17.9304, -11.0765

Complementary

The Complementary color scheme is a pair of colors which are on the opposite of each other on the color wheel.



200.8700, -12.7539, 30.8090



210.1300, 12.7539, -30.8090

Split Complementary

Split-complementary colors differ from the complementary color scheme. The scheme consists of three colors, the original color and two neighbors of the complement color.



195.1610, 19.1476, -28.2052



200.8700, -12.7539, 30.8090



191.7890, 6.5130, -35.7720

Square

The Square scheme is like the rectangle color scheme, but the four colors are evenly spaced on the color wheel.



200.8700, -12.7539, 30.8090



195.0300, -12.3398, -8.7963



191.9550, 14.8122, -37.6715



201.3720, 12.6346, 7.5668

Rectangle

The Rectangle color scheme consists of four colors that form a rectangle on the color wheel.



200.8700, -12.7539, 30.8090



197.6800, -18.0832, 13.4356



191.9550, 14.8122, -37.6715



197.5260, 18.9677, -17.1243

Sweetspot

The Sweet Spot groups the original color and five complimentary colors.



200.8700, -12.7539, 30.8090



243.3280, -4.1057, 10.2363



198.8250, 12.4113, 32.6025



120.0610, -2.4951, 6.9625



0.0000, 0.0000, 0.0000



128.0000, 0.0000, 0.0000

Same Dimension

The Same Dimension uses a secret algorithm to generate beautiful new colors.



200.8700, -12.7539, 30.8090



209.6000, -16.5648, 39.8158



218.4800, -21.4356, 15.3650



110.4630, -2.2003, 5.7329



77.0120, -37.9669, 91.1975



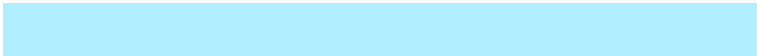
22.6030, -11.1433, 27.5352

Inverse Universe

The Inverse Universe completely reimagines the original color for something new.



210.1300, 12.7539, -30.8090



221.4000, 16.5648, -39.8158



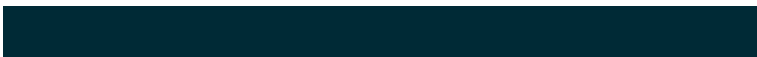
192.5200, 21.4356, -15.3650



112.5370, 2.2003, -5.7329



103.9880, 37.9669, -91.1975



30.8100, 11.4327, -27.0204

Previews

White Background



This preview shows how the YUV color 200.8700, -12.7539, 30.8090 looks on a white background.

Color Contrast Check

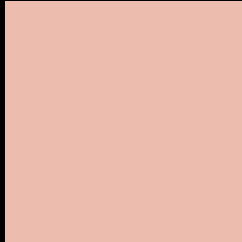
Large Text (above 18pt) WCAG AA × Fail

Any Text WCAG AA × Fail

Large Text (above 18pt) WCAG AAA × Fail

Any Text WCAG AAA × Fail

Black Background



This preview shows how the YUV color 200.8700, -12.7539, 30.8090 looks on a black background.

Color Contrast Check

Large Text (above 18pt) WCAG AA ✓ Pass

Any Text WCAG AA ✓ Pass

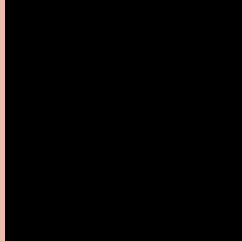
Large Text (above 18pt) WCAG AAA ✓ Pass

Any Text WCAG AAA ✓ Pass

If you want to check with other color combinations, try the [Color Contrast Checker](#).

YUV 200.8700, -12.7539, 30.8090

Background



This preview shows how black text looks on a background with the YUV color 200.8700, -12.7539, 30.8090.



This preview shows how white text looks on a background with the YUV color 200.8700, -12.7539, 30.8090.

30.8090.

Color Blindness Simulation

Color vision deficiency is a very complex topic, and I could not describe the different causes any better than Wikipedia does, so if you want to learn more, you should check out their [article about color blindness](#).

Dichromacy



Original Color

200.8700, -12.7539, 30.8090

Protanopia

198.6390, -9.1890, 7.3326

Deuteranopia

200.4130, -13.0216, 23.3168



Tritanopia

202.1550, -1.5554, 32.3131

Trichromacy



Original Color

200.8700, -12.7539, 30.8090

Protanomaly

199.3520, -10.5265, 16.3543

Deuteranomaly

200.7230, -13.1744, 25.6759

Tritanomaly

201.4170, -5.6286, 32.0833

Monochromacy



Original Color

200.8700, -12.7539, 30.8090

Achromatopsia

201.0000, 0.0000, 0.0000

Achromatomaly

200.9260, -4.4005, 11.4659

CSS Examples

Text

The CSS property to change the color of the text to YUV 200.8700, -12.7539, 30.8090 is called "color". The color property can be set on classes, ids or directly on the HTML element.

This example shows how text in the color `rgb(236, 188, 175)` looks like.

```
.text, #text, p{  
    color:rgb(236, 188, 175)  
}
```

If you want to add a text shadow in that color use the text-shadow property, you can generate a text shadow directly with our [CSS Text Shadow Generator](#).

Here you see how black text with a 4 pixel rgb(236, 188, 175) colored shadow looks like.

```
.shadow{ text-shadow: 4px 4px 2px rgb(236, 188, 175) }
```

Border

The CSS property to change the border of an element to YUV 200.8700, -12.7539, 30.8090 is called "border".

The border property can be set on classes, ids or directly on the HTML element.

This example shows the color as border, it can be applied via the CSS property "border" or "border-color".

```
.border, #border, table{ border:4px solid rgb(236, 188, 175) }
```


If only the border color should be changed use the property border-color.

```
.border{ border-color:rgb(236, 188, 175) }
```

If you want to add a box shadow in that color use:

Here you see how a box with a 4 pixel rgb(236, 188, 175) colored shadow looks like.

```
.boxshadow{ -moz-box-shadow:4px 4px 4px  
4px rgb(236, 188, 175); -webkit-box-  
shadow:4px 4px 4px 4px rgb(236, 188, 175);  
box-shadow:4px 4px 4px 4px rgb(236, 188,  
175) }
```

Background

The CSS property to change the background color of an element to YUV 200.8700, -12.7539, 30.8090 is called "background". The background property can be set on classes, ids or directly on the HTML element.

```
.background, #background, body{  
background: rgb(236, 188, 175) }
```

If only the background color should be changed can be used:

```
.background{ background-color: rgb(236,  
188, 175) }
```

This example shows the color as background, it is applied via the CSS property "background".

To optimize and compress your CSS code, you can use our [online CSS compressor and optimizer](#) based on csstidy. If you want to create a linear or radial gradient as background or border, check our [CSS Gradient Generator](#).

Hey! You found this booklet interesting? Support Converting Colors with the new Membership Option!

The pro membership hides all ads, plus gives you double the colors in the color bucket, and more awesome pro features!

[Learn more, Memberships starting at \\$2.50/m!](#)

**Follow me
on Twitter!**

@ConvertingColor